

# Transport for London Quarterly Crime Bulletin

Quarter 1 2019/20

MAYOR OF LONDON



**TRANSPORT  
FOR LONDON**  
EVERY JOURNEY MATTERS

# Contents

---

3 Introduction

---

5 Crime at a glance

---

6 Crime Summary

---

7 Theft

---

8 Violence

---

9 Robbery

---

10 Sex Offences

---

11 Criminal Damage

---

12 Hate Crime

---

13 London Underground

---

14 Buses

---

15 Docklands Light Railway

---

16 London Overground

---

17 TfL Rail

---

18 Trams

---

19 Useful Links

# Summary

## Transport Crime in London

Public transport in London continues to be low crime and provide a safe way to travel. Currently, eleven million passengers travel on TfL's public transport services each day with very few of them ever experiencing or witnessing crime. For every one million passenger journeys there are 10 reported crimes, the majority of these being theft offences.

These low levels of crime have been driven by a range of initiatives undertaken by TfL in partnership with the police forces in London. TfL's significant investment in transport policing and commitment to improving safety and security has ensured the system remains a low crime environment.

Despite our public transport networks remaining low crime environments we have seen an upturn in crime levels over recent years. This follows ten years of successive crime reduction and achieving record low levels of crime in 2014/15, and until recently, bucking national and London-wide crime trends. The increase in crime on our networks has largely been driven by increases in theft offences and low-level violence and aggression between passengers, as well as making it easier to report crime. Although serious violence remains rare the recent incidents at Elephant and Castle and Hillingdon where two young people tragically lost their lives are a stark reminder of the vital work our police partners are doing to keep weapons off our network.

The level of pan-modal crime increased by 31.7% in the first quarter of 2019/20 compared to the same quarter last year (2,450 more offences). The increase is higher than the London-wide increase of 10 per cent and is being driven by a rise in reported theft offences.

Theft has risen by 71% across our public transport networks (2,029 additional offences) accounting for 83% of the overall increase in crime for quarter one 2019/20 compared to last year. 96% of all theft offences occur on London Underground or London Buses. The rise in theft can in part be explained by the BTP launching their on-line crime reporting in October 2018 which means that the BTP are now recording offences which may previously have gone unreported. Despite this, we know that our public transport networks are being targeted by prolific thieves working as part of organised criminal networks. The police are using a range of tactics to deter, detect and disrupt their criminal activity including plain clothes and uniformed officer patrols, large scale operations and investigations. We have been supporting this significant police effort by promoting crime prevention advice to our customers. As part of Operation Farrier, the BTP has made some significant arrests that have led to notable custodial sentences. This activity continues.

There is also a sharp increase in robbery on the bus network, with a 93% rise between Q1 2018/19 and Q1 2019/20 (231 more offences), and robbery in London as a whole increased by 25% for the same time period. This rise is being addressed through targeted police operations, with particular joint work with Metropolitan Police Local Borough Operational Command Units and the Metropolitan Police Violent Crime Taskforce to target linked series offences and known violent

offenders offending on London's streets who are also affecting the public transport network.

Measures put in place to deal with the upward trend in violence / serious public order offences between passengers seen on some rail modes (LU, DLR and the LO networks) have had a positive effect. While the volume of offences is still higher than the same quarter last year, it has declined over the previous six months. The issue remains one of low level violence, pushing and shoving, verbal disputes and threatening behaviour at busy commuter times when services are at peak capacity. Some of this violence and threatening behaviour is targeted at our staff, and those of our operators and contractors, whilst simply doing their jobs. This is unacceptable. We will soon be launching a pan-TfL strategy to tackle workplace violence and aggression against our people.

We are committed to reversing the upward trend and are working closely with the police to ensure that our public transport networks are a safe place to travel and work.

# Crime at a glance

Quarter 1 2019/20

**10,171**

total crimes ▲

**10.2**

crime rate ▲

**2,450**

change ▲



London Underground

**4,916**

14.2 ▲  
rate

1481 ▲  
change



Buses

**4,360**

7.9 ▲  
rate

866 ▲  
change



DLR

**169**

5.5 ▲  
rate

6 ▲  
change



London Overground

**456**

9.9 ▲  
rate

62 ▲  
change



London Trams

**71**

10.1 ▲  
rate

8 ▲  
change



TfL Rail

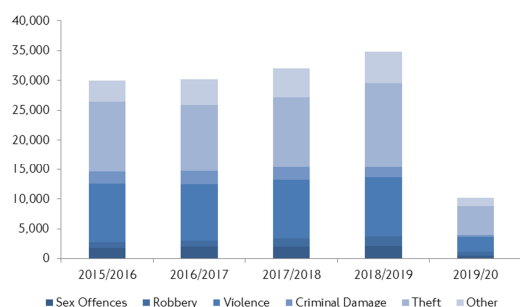
**199**

13.9 ▲  
rate

27 ▲  
change

# Q1 Crime Summary

## Total Crime (by Type)

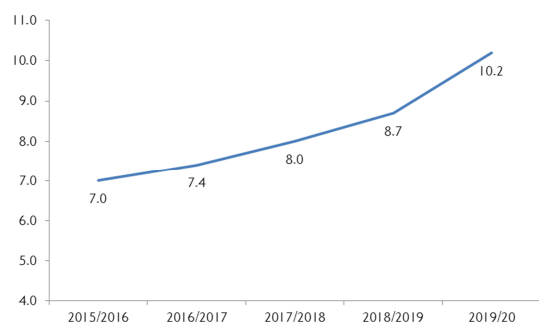


At the end of Q1 2019/20, 10,171 crimes had been committed on the Transport network. Crime volumes for this quarter are up 2,450 offences compared to Q1 2018/19.

This trend is strongly driven by an increase in Theft and to a lesser extent Robbery offences.

## Crime Rate

Crimes per million passenger journeys

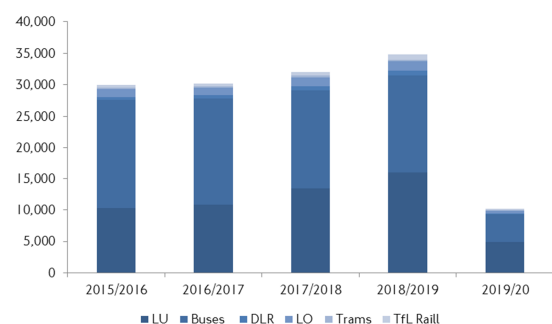


At the end of Q1, the Pan Modal crime rate was 10.2 crimes per million passenger journeys.

The crime rate has increased year on year for the past 5 years (following sustained periods of decline).

This increase in rate is driven by a rise in Theft Offences.

## Total Crime (by Mode)



Of the 10171 crimes 91% occur on the London Underground or Bus networks. The proportion of LU crimes has increased (from 34% to 48%) as Buses have declined from 58% to 43%. All other modes have remained static contributing between 7 and 10% collectively.

## Q1 Change by Type and Mode

	Sex Offences	Robbery	Violence	Criminal Damage	Theft	Other	Total
LUL	-22	39	71	14	1,369	10	1481
Overground	2	5	3	-14	33	33	62
DLR	-7	1	5	0	10	-3	6
Trams	9	-1	0	-4	-2	6	8
TfL Rail	1	0	7	0	3	16	27
Bus	10	231	34	-55	616	30	866
<b>Total</b>	<b>-7</b>	<b>275</b>	<b>120</b>	<b>-59</b>	<b>2,029</b>	<b>92</b>	<b>2,450</b>

Comparing Q1 to the previous year there has been a notable increase in Theft on the LU and Bus networks and a significant increase in Robbery offences on the Bus network.

# Theft

## Pan Modal

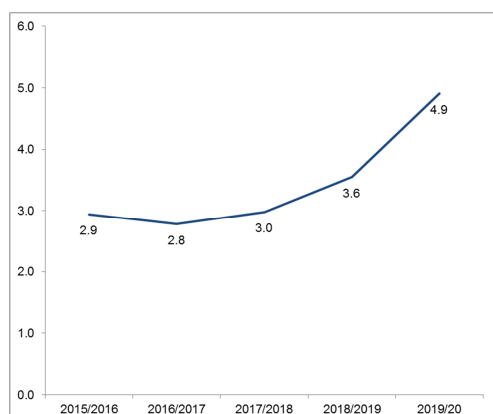
### Crime Summary

TfL has seen a 70.9% increase predominantly driven by increasing thefts on the LU network (which accounts for two thirds of this increase). At the end of Q1, the Pan Modal crime for theft was 4.9 Crimes per million passenger journeys, an increase of 0.4 on the previous quarter.

Theft Crimes   Crime Rate	Q1 2018/19	Q2 2018/19	Q3 2018/19	Q4 2018/19	Q1 2019/20	Change Q1- Q1
London Underground	1,263 3.7	1,250 3.7	1,997 5.5	2,382 6.9	2,632 7.6	108.4% +3.9
TfL Rail	34 2.7	17 1.2	39 2.6	33 2.4	37 2.6	8.8% -0.1
London Trams	8 1.1	8 1.1	13 1.7	6 0.9	6 0.9	-25.0% -0.2
Docklands Light Railway	41 1.3	43 1.4	43 1.4	56 1.8	51 1.7	24.4% +0.4
London Overground	70 1.5	73 1.5	102 2.1	96 2.0	103 2.2	47.1% +0.7
Buses	1,444 2.6	1,501 2.8	1,813 3.2	1,927 3.5	2,060 3.7	42.7% +1.1
Total	2,860 2.9	2,892 3.0	4,007 3.9	4,500 4.5	4,889 4.9	70.9% +2.0

### 5 year Crime Rate

Thefts per million passenger journeys



25% of Theft on LU targets the evening peak (1700-2000) on weekdays.

3% of crimes occur during the hours of Night Tube operation<sup>1</sup>

Theft on Buses peaks between 18:00 and 19:00 (increasing throughout the day from the morning peak).

<sup>1</sup> The hours of 00:30 – 05:30 Sat and Sun are used for this estimate

# Violence

## Pan Modal

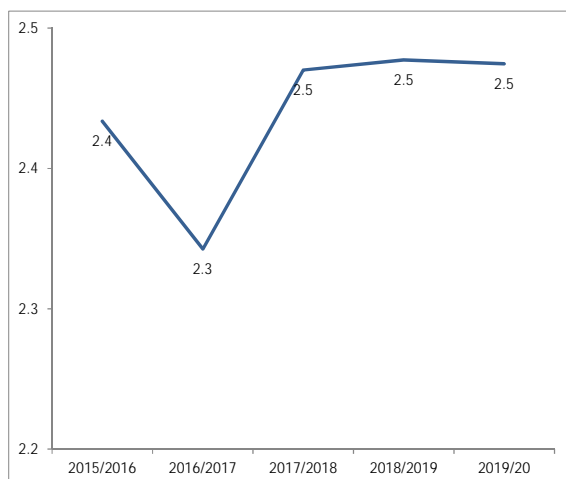
### Crime Summary

TfL has seen a network wide 5.1% increase in Violence predominantly driven by increasing volumes on the LU network (71 crimes) and to a lesser extent the bus network (34 crimes).

Violence Crimes   Crime Rate	Q1 2018/19	Q2 2018/19	Q3 2018/19	Q4 2018/19	Q1 2019/20	Change Q1- Q1
London Underground	746 2.2	747 2.2	900 2.5	905 2.6	817 2.4	9.5% +0.2
TfL Rail	48 3.8	63 4.5	65 4.4	52 3.7	55 3.8	14.6% 0.0
London Trams	21 2.9	18 2.5	22 2.9	20 2.9	21 3.0	0.0% +0.1
Docklands Light Railway	41 1.3	54 1.8	69 2.2	39 1.3	46 1.5	12.2% +0.2
London Overground	103 2.2	97 2.1	108 2.2	89 1.9	106 2.3	2.9% +0.1
Buses	1,387 2.5	1,334 2.5	1,558 2.8	1,456 2.7	1,421 2.6	2.5% +0.1
<b>Total</b>	<b>2,346 2.3</b>	<b>2,313 2.4</b>	<b>2,722 2.6</b>	<b>2,561 2.6</b>	<b>2,466 2.5</b>	<b>5.1% +0.2</b>

### 5 year Crime Rate

Crimes per million passenger journeys



At the end of Q1, the Pan Modal crime rate was 2.5 Crimes per million passenger journeys.

This remains largely unchanged against previous quarters, the same period last year and against the last five years.



# Robbery

## Pan Modal

### Crime Summary

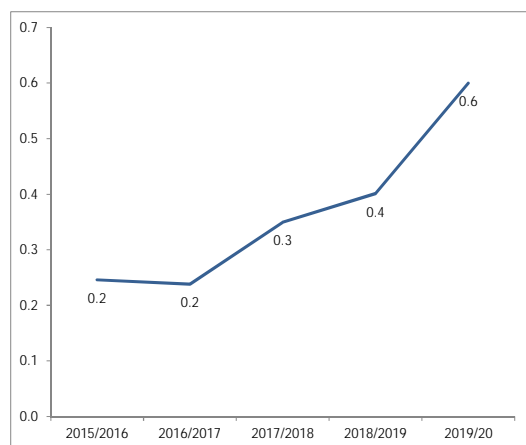
Robbery remains a low volume crime across all modes. At the end of Q1, the Pan Modal crime rate was 0.6 Crimes per million passenger journeys.

TfL has seen an 85.1% increase on the same period last year and a steady rise in Robbery since 2016/2017. It is predominantly driven by crimes on Buses with 84% of the quarter on quarter increase associated with crimes on the Bus network.

Robbery Crimes   Crime Rate	Q1 2018/19	Q2 2018/19	Q3 2018/19	Q4 2018/19	Q1 2019/20	Change Q1- Q1
London Underground	49 0.1	42 0.1	55 0.2	61 0.2	88 0.3	79.6% +0.2
TfL Rail	4 0.3	4 0.3	6 0.4	8 0.6	4 0.3	0.0% 0.0
London Trams	6 0.8	0 0.0	2 0.3	3 0.4	5 0.7	-16.7% -0.1
Docklands Light Railway	8 0.3	10 0.3	5 0.2	3 0.1	9 0.3	12.5% 0.0
London Overground	8 0.2	6 0.1	10 0.2	7 0.1	13 0.3	62.5% +0.1
Buses	248 0.4	248 0.5	360 0.6	452 0.8	479 0.9	93.1% +0.5
Total	323 0.3	310 0.3	438 0.4	534 0.5	598 0.6	85.1% +0.3

### 5 year Crime Rate

Crimes per million passenger journeys



At the end of Q1, the Pan Modal crime rate was 0.6 Crimes per million passenger journeys.

# Sexual Offences

## Pan Modal

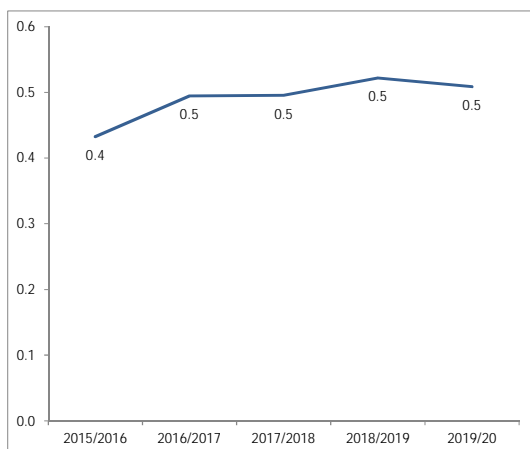
### Crime Summary

TfL has seen a -1.4% decrease predominantly driven by decreasing volumes on DLR and LU. At the end of Q1, the Pan Modal crime rate was 0.5 Crimes per million passenger journeys.

Sexual Crimes   Crime Rate	Q1 2018/19	Q2 2018/19	Q3 2018/19	Q4 2018/19	Q1 2019/20	Change Q1- Q1
London Underground	303 0.9	325 1.0	307 0.9	278 0.8	281 0.8	-7.3% -0.1
TfL Rail	8 0.6	7 0.5	11 0.7	4 0.3	9 0.6	12.5% 0.0
London Trams	2 0.3	4 0.5	2 0.3	2 0.3	11 1.6	450.0% +1.3
Docklands Light Railway	9 0.3	19 0.6	7 0.2	8 0.3	2 0.1	-77.8% -0.2
London Overground	21 0.4	23 0.5	15 0.3	21 0.4	23 0.5	9.5% +0.1
Buses	171 0.3	185 0.3	187 0.3	170 0.3	181 0.3	5.8% 0.0
<b>Total</b>	<b>514</b> <b>0.5</b>	<b>563</b> <b>0.6</b>	<b>529</b> <b>0.5</b>	<b>483</b> <b>0.5</b>	<b>507</b> <b>0.5</b>	<b>-1.4%</b> <b>0.0</b>

### 5 year Crime Rate

Sex Offences per million passenger journeys



The number of Sex Offences has declined slightly on previous years following an intense period of campaigning to improve the report of Sex Offences on London's Transport services.

Sex Offences are extremely rare with one reported for every two million passenger journeys,

# Criminal Damage

## Pan Modal

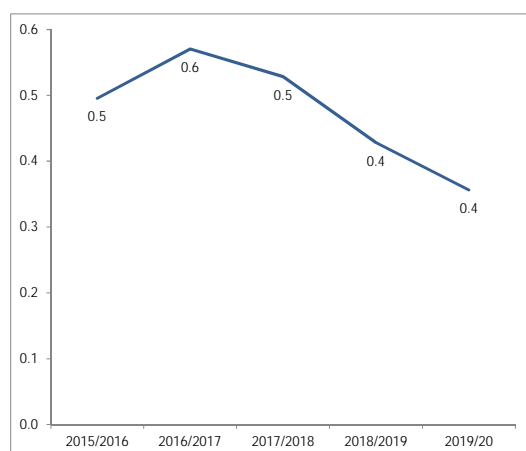
### Crime Summary

Offences of Criminal Damage reported to the police continue to decline with 355 reported in Q1. This is a 14.3% decrease across modes predominantly driven by decreasing volumes on the bus network and London Overground.

Criminal Damage Crimes   Crime Rate	Q1 2018/19	Q2 2018/19	Q3 2018/19	Q4 2018/19	Q1 2019/20	Change Q1- Q1
London Underground	183	196	210	304	197	7.7%
	0.5	0.6	0.6	0.9	0.6	+0.1
TfL Rail	16	16	30	16	16	0.0%
	1.3	1.1	2.0	1.1	1.1	-0.2
London Trams	5	5	6	3	1	-80.0%
	0.7	0.7	0.8	0.4	0.1	-0.6
Docklands Light Railway	9	9	8	15	9	0.0%
	0.3	0.3	0.3	0.5	0.3	0.0
London Overground	39	12	53	14	25	-35.9%
	0.8	0.3	1.1	0.3	0.5	-0.3
Buses	162	135	132	138	107	-34.0%
	0.3	0.2	0.2	0.3	0.2	-0.1
Total	414	373	439	490	355	-14.3%
	0.4	0.4	0.4	0.5	0.4	0.0

### 5 year Crime Rate

Criminal Damage per million passenger journeys



At the end of Q1, the Pan Modal crime rate was 0.4 Crimes per million passenger journeys.

The crime rate continues to decline from a high in 2016/17.

# Hate Crime

## Pan Modal

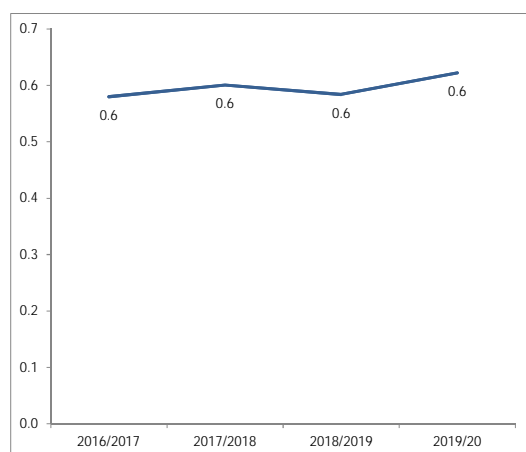
### Crime Summary

TfL has seen a 9.9% increase, and this is in line with national trends. A range of activity is underway to tackle hate crime and reassure those that feel vulnerable to victimisation including Operation Safer Travel for All, which seeks to reassure customers and give them practical information about what to do should they ever experience or witness hate crime, and #WeStandTogether, a communications campaign to reassure the travelling public that the network is safe and encourage them to report issues so action can be taken. This is in addition to targeted action against offenders.

Hate Crimes Crimes/Motivational Factors	Q1 2018/19	Q2 2018/19	Q3 2018/19	Q4 2018/19	Q1 2019/20	Change Q1- Q1
London Underground	249	240	258	280	262	5.2%
	0.7	0.7	0.7	0.8	0.8	+0.1
TfL Rail	11	17	19	11	19	72.7%
	0.9	1.2	1.3	0.8	1.3	+0.4
London Trams	5	3	6	0	7	40.0%
	0.7	0.4	0.8	0.0	1.0	+0.4
Docklands Light Railway	13	22	13	9	19	46.2%
	0.4	0.7	0.4	0.3	0.6	+0.2
London Overground	39	44	40	46	43	10.3%
	0.8	0.9	0.8	1.0	0.9	+0.1
Buses	247	188	296	273	270	9.3%
	0.4	0.3	0.5	0.5	0.5	+0.1
<b>Total</b>	<b>564</b>	<b>514</b>	<b>632</b>	<b>619</b>	<b>620</b>	<b>9.9%</b>
	<b>0.6</b>	<b>0.5</b>	<b>0.6</b>	<b>0.6</b>	<b>0.6</b>	<b>0.0</b>

### 4 year Crime Rate

Hate crimes per million passenger journeys



At the end of Q1, the Pan Modal crime rate was 0.6 Crimes per million passenger journeys.

The current rate has remained relatively static compared with previous years. Hate crime remains a focus for TfL and its policing partners.

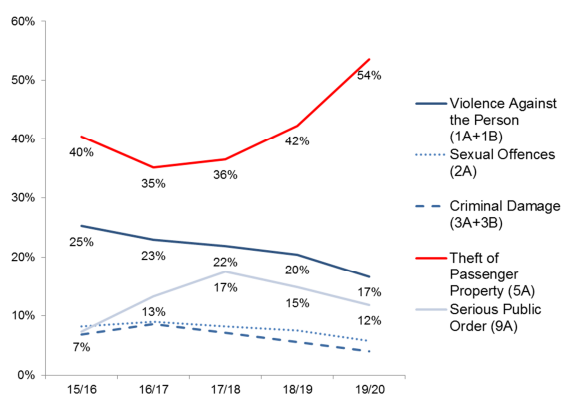
# London Underground (LU) Crime Summary

The London Underground network has the highest volume of crime (4,916) and highest crime rate across London's Transport modes. Despite this it remains a low crime environment with 14.2 crimes for every one million passenger journeys.

London Underground has seen a 43.1% increase (1,481 offences) and the rate of crime has increased from 10.1 to 14.2 crimes per million passenger journeys.

London Underground Crimes   Crime Rate	Q1 2018/19	Q2 2018/19	Q3 2018/19	Q4 2018/19	Q1 2019/20	Change Q1- Q1
Violence against the person	746 2.2	747 2.2	900 2.5	905 2.6	817 2.4	9.5% +0.2
Sexual Offences	303 0.9	325 1.0	307 0.9	278 0.8	281 0.8	-7.3% -0.1
Criminal Damage	183 0.5	196 0.6	210 0.6	304 0.9	197 0.6	7.7% +0.1
Line of Route	7 N/A	12 0.0	15 0.0	11 0.0	8 N/A	14.3% -
Theft of Passenger Property	1,263 3.7	1,250 3.7	1,997 5.5	2,382 6.9	2,632 7.6	108.4% +3.9
Motor Vehicle/ Cycle Theft	96 0.3	129 0.4	106 0.3	119 0.3	98 0.3	2.1% 0.0
Robbery	49 0.1	42 0.1	55 0.2	61 0.2	88 0.3	79.6% +0.2
Serious Public Order	601 1.8	538 1.6	627 1.7	635 1.8	581 1.7	-3.3% -0.1
Theft of Railway Property*	47 0.1	47 0.1	41 0.1	53 0.2	61 0.2	29.8% +0.1
Serious Fraud	32 0.1	31 0.1	40 0.1	24 0.1	14 N/A	-56.3% -
Drugs	72 0.2	99 0.3	86 0.2	102 0.3	105 0.3	45.8% +0.1
Other Serious Offences	36 0.1	32 0.1	31 0.1	37 0.1	34 0.1	-5.6% 0.0
Total Notifiable Offences	3,435 10.1	3,468 10.3	4,415 12.2	4,911 14.2	4,916 14.2	43.1% +4.1

## LU 5 year Proportion by Crime Type



The overall increase stated above has mainly been driven by the increase in Theft offences combined with a slight decline in passenger volumes.

In Q1 **Theft of Passenger Property** accounts for 54% of all offences (compared to a low of 35% in 16/17). Robbery has increased by 39 crimes compared to Q1 18/19.

\* Also includes Burglary

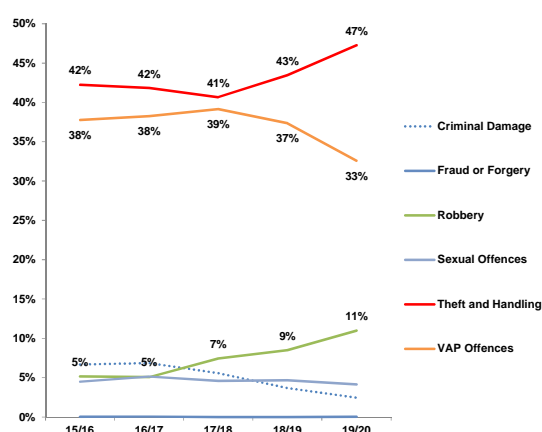
# Buses Crime Summary

The Bus network has the second lowest Crime Rate across all Transport Modes with 7.9 crimes per million passenger journeys.

In Q1, Buses saw a 24.8% increase (866 Offences) and the rate of crime has increased from 6.2 to 7.9 crimes per million passenger journeys as a result.

Buses Crimes   Crime Rate	Q1 2018/19	Q2 2018/19	Q3 2018/19	Q4 2018/19	Q1 2019/20	Change Q1- Q1
Violence against the person	1,387	1,334	1,558	1,456	1,421	2.5%
	2.5	2.5	2.8	2.7	2.6	+0.1
Sexual Offences	171	185	187	170	181	5.8%
	0.3	0.3	0.3	0.3	0.3	0.0
Criminal Damage	162	135	132	138	107	-34.0%
	0.3	0.2	0.2	0.3	0.2	-0.1
Theft of Passenger Property	1,444	1,501	1,813	1,927	2,060	42.7%
	2.6	2.8	3.2	3.5	3.7	+1.1
Robbery	248	248	360	452	479	93.1%
	0.4	0.5	0.6	0.8	0.9	+0.5
Other Notifiable Offences	82	86	69	112	112	36.6%
	0.2	0.2	0.1	0.2	0.3	+0.1
Total Notifiable Offences	3,494	3,489	4,119	4,255	4,360	24.8%
	6.2	6.4	7.3	7.8	7.9	+1.7

## Buses 5 year Proportion by Crime Type



Criminal Damage is the only crime type to have decreased on the Bus network.

The increases stated above have mainly been driven by the increase in **Theft** and **Robbery** offences combined with a slight decline in passenger volumes.

Theft makes up 70% of the Q1 increases and Robbery 27%.

As a proportion of all crime on Buses Robbery now makes up 11% and has risen year on year over the last five years.

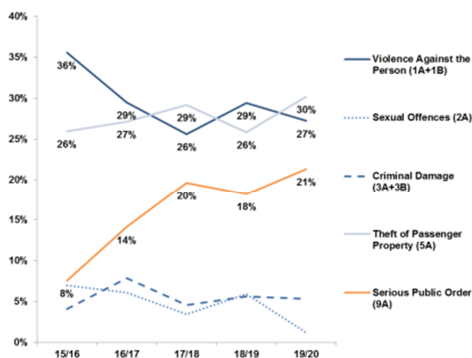
Violence crimes have marginally increased quarter on quarter but it has decreased as a proportion of all crime.

# Docklands Light Railway (DLR) Crime Summary

The DLR network has the lowest crime rate of all transport modes in London. There are 5.5 crimes for every one million journeys. Although there was a 3.7% increase in crime volume this amounts to six offences and approximately two crimes per day during Q1.

DLR Crimes   Crime Rate	Q1 2018/19	Q2 2018/19	Q3 2018/19	Q4 2018/19	Q1 2019/20	Change Q1- Q1
Violence against the person	41	54	69	39	46	12.2%
	1.3	1.8	2.2	1.3	1.5	+0.2
Sexual Offences	9	19	7	8	2	-77.8%
	0.3	0.6	0.2	0.3	0.1	-0.2
Criminal Damage	9	9	8	15	9	0.0%
	0.3	0.3	0.3	0.5	0.3	0.0
Line of Route	1	1	1	1	2	100.0%
	0.0	0.0	0.0	0.0	0.1	+0.1
Theft of Passenger Property	41	43	43	56	51	24.4%
	1.3	1.4	1.4	1.8	1.7	+0.4
Motor Vehicle/ Cycle Theft	8	7	6	6	3	-62.5%
	0.3	0.2	0.2	0.2	0.1	-0.2
Robbery	8	10	5	3	9	12.5%
	0.3	0.3	0.2	0.1	0.3	0.0
Serious Public Order	34	32	33	31	36	5.9%
	1.1	1.1	1.1	1.0	1.2	+0.1
Theft of Railway Property*	5	4	6	3	3	-40.0%
	0.2	0.1	0.2	0.1	0.1	-0.1
Serious Fraud	0	1	0	0	0	0.0%
	0.0	0.0	0.0	0.0	0.0	0.0
Drugs	3	7	4	5	5	66.7%
	0.1	0.2	0.1	0.2	0.2	+0.1
Other Serious Offences	4	1	5	0	3	-25.0%
	0.1	0.0	0.2	0.0	0.1	0.0
Total Notifiable Offences	163	188	187	167	169	3.7%
	5.3	6.3	6.0	5.5	5.5	+0.2

## DLR 5 year Proportion by Crime Type

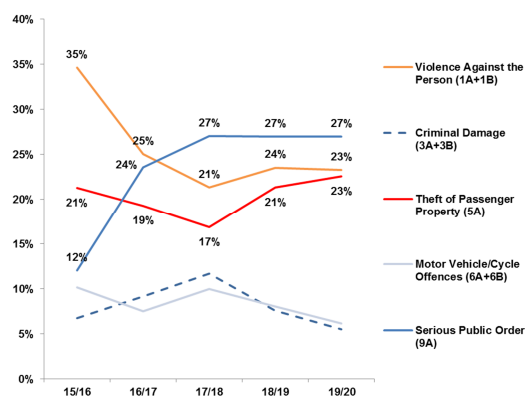


# London Overground (LO) Crime Summary

The LO network has seen a 15.7% increase (62 offences). This amounts to approximately five crimes per day during Q1.

LO Crimes   Crime Rate	Q1 2018/19	Q2 2018/19	Q3 2018/19	Q4 2018/19	Q1 2019/20	Change Q1- Q1
Violence against the person	103	97	108	89	106	2.9%
	2.2	2.1	2.2	1.9	2.3	+0.1
Sexual Offences	21	23	15	21	23	9.5%
	0.4	0.5	0.3	0.4	0.5	+0.1
Criminal Damage	39	12	53	14	25	-35.9%
	0.8	0.3	1.1	0.3	0.5	-0.3
Line of Route	0	0	1	2	0	N/A
	0.0	0.0	0.0	0.0	0.0	0.0
Theft of Passenger Property	70	73	102	96	103	47.1%
	1.5	1.5	2.1	2.0	2.2	+0.7
Motor Vehicle/ Cycle Theft	29	48	27	23	28	-3.4%
	0.6	1.0	0.6	0.5	0.6	0.0
Robbery	8	6	10	7	13	62.5%
	0.2	0.1	0.2	0.1	0.3	+0.1
Serious Public Order	102	111	111	97	123	20.6%
	2.2	2.3	2.3	2.1	2.7	+0.5
Theft of Railway Property*	5	0	4	4	15	200.0%
	0.1	0.0	0.1	0.1	0.3	+0.2
Serious Fraud	0	1	0	4	0	N/A
	0.0	0.0	0.0	0.1	0.0	0.0
Drugs	8	11	14	17	14	75.0%
	0.2	0.2	0.3	0.4	0.3	+0.1
Other Serious Offences	5	3	4	5	6	20.0%
	0.1	0.1	0.1	0.1	0.1	0.0
<b>Total Notifiable Offences</b>	<b>394</b>	<b>385</b>	<b>449</b>	<b>379</b>	<b>456</b>	<b>15.7%</b>
	<b>8.4</b>	<b>8.1</b>	<b>9.3</b>	<b>8.1</b>	<b>9.9</b>	<b>+1.5</b>

## LO 5 year Proportion by Crime Type



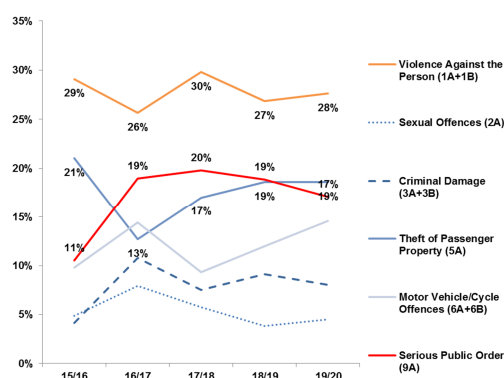


# TfL Rail Crime Summary

The TfL Rail network has seen a 15.7% increase (27 offences). This amounts to approximately two crimes per day during Q1.

TfL Rail Crimes   Crime Rate	Q1 2018/19	Q2 2018/19	Q3 2018/19	Q4 2018/19	Q1 2019/20	Change Q1- Q1
Violence against the person	48	63	65	52	55	14.6%
	3.8	4.5	4.4	3.7	3.8	0.0
Sexual Offences	8	7	11	4	9	12.5%
	0.6	0.5	0.7	0.3	0.6	0.0
Criminal Damage	16	16	30	16	16	0.0%
	1.3	1.1	2.0	1.1	1.1	-0.2
Line of Route	1	0	2	0	1	0.0%
	0.1	0.0	0.1	0.0	0.1	0.0
Theft of Passenger Property	34	17	39	33	37	8.8%
	2.7	1.2	2.6	2.4	2.6	-0.1
Motor Vehicle/ Cycle Theft	20	54	34	14	29	45.0%
	1.6	3.9	2.3	1.0	2.0	+0.4
Robbery	4	4	6	8	4	0.0%
	0.3	0.3	0.4	0.6	0.3	0.0
Serious Public Order	28	50	43	36	34	21.4%
	2.2	3.6	2.9	2.6	2.4	+0.2
Theft of Railway Property*	6	8	4	6	6	0.0%
	0.5	0.6	0.3	0.4	0.4	-0.1
Serious Fraud	2	1	1	0	0	-100.0%
	0.2	0.1	0.1	0.0	0.0	-0.2
Drugs	2	14	12	6	4	100.0%
	0.2	1.0	0.8	0.4	0.3	+0.1
Other Serious Offences	3	5	3	6	4	33.3%
	0.2	0.4	0.2	0.4	0.3	+0.1
Total Notifiable Offences	172	269	250	181	199	15.7%
	13.7	19.2	16.9	12.9	13.9	+0.2

## TfL Rail 5 year Proportion by Crime Type



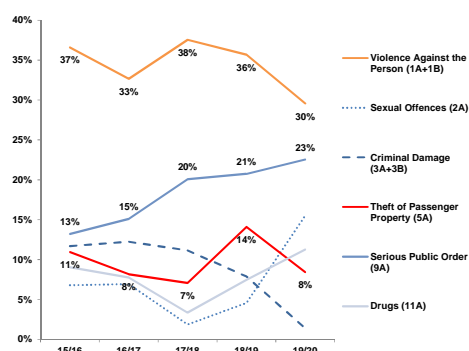
Over a five year period TfL rail crimes have remaining relatively consistent with no identifiable trends across the different crime types. Serious Public Order, Violence & Theft of Passenger Property make up two thirds of all crime.

# Trams Crime Summary

Trams have seen a 12.7% increase from 63 to 71 crimes. However the crime rate has increased from 8.8 to 10.1 crimes per million passenger journeys. This amounts to less than one crime per day during Q1.

Trams Crimes   Crime Rate	Q1 2018/19	Q2 2018/19	Q3 2018/19	Q4 2018/19	Q1 2019/20	Change Q1- Q1
Violence against the person	21	18	22	20	21	0.0%
	2.9	2.5	2.9	2.9	3.0	+0.1
Sexual Offences	2	4	2	2	11	450.0%
	0.3	0.5	0.3	0.3	1.6	+1.3
Criminal Damage	5	5	6	3	1	-80.0%
	0.7	0.7	0.8	0.4	0.1	-0.6
Line of Route	1	0	2	2	1	0.0%
	0.1	0.0	0.3	0.3	0.1	0.0
Theft of Passenger Property	8	8	13	6	6	-25.0%
	1.1	1.1	1.7	0.9	0.9	-0.2
Motor Vehicle/ Cycle Theft	3	0	2	0	1	-66.7%
	0.4	0.0	0.3	0.0	0.1	-0.3
Robbery	6	0	2	3	5	-16.7%
	0.8	0.0	0.3	0.4	0.7	-0.1
Serious Public Order	14	16	13	7	16	14.3%
	2.0	2.2	1.7	1.0	2.3	+0.3
Theft of Railway Property*	0	0	0	0	0	0.0%
	0.0	0.0	0.0	0.0	0.0	0.0
Serious Fraud	0	1	1	0	0	0.0%
	0.0	0.1	0.1	0.0	0.0	0.0
Drugs	2	2	10	4	8	300.0%
	0.3	0.3	1.3	0.6	1.1	+0.8
Other Serious Offences	1	0	0	0	1	0.0%
	0.1	0.0	0.0	0.0	0.1	0.0
<b>Total Notifiable Offences</b>	<b>63</b>	<b>54</b>	<b>73</b>	<b>47</b>	<b>71</b>	<b>12.7%</b>
	<b>8.8</b>	<b>7.4</b>	<b>9.8</b>	<b>6.9</b>	<b>10.1</b>	<b>+1.3</b>

## Trams 5 year Proportion by Crime Type



Crimes on Trams have remained at approximately 250 a year for the past five years. As it is a low crime environment and carries significantly fewer passengers (7 million in Q1) small fluctuations in crimes will change the overall rate significantly.

# Useful links

Bus-related crime statistics by borough: - <https://tfl.gov.uk/corporate/publications-and-reports/bus-crime-statistics>

Transport for London - <http://www.tfl.gov.uk>

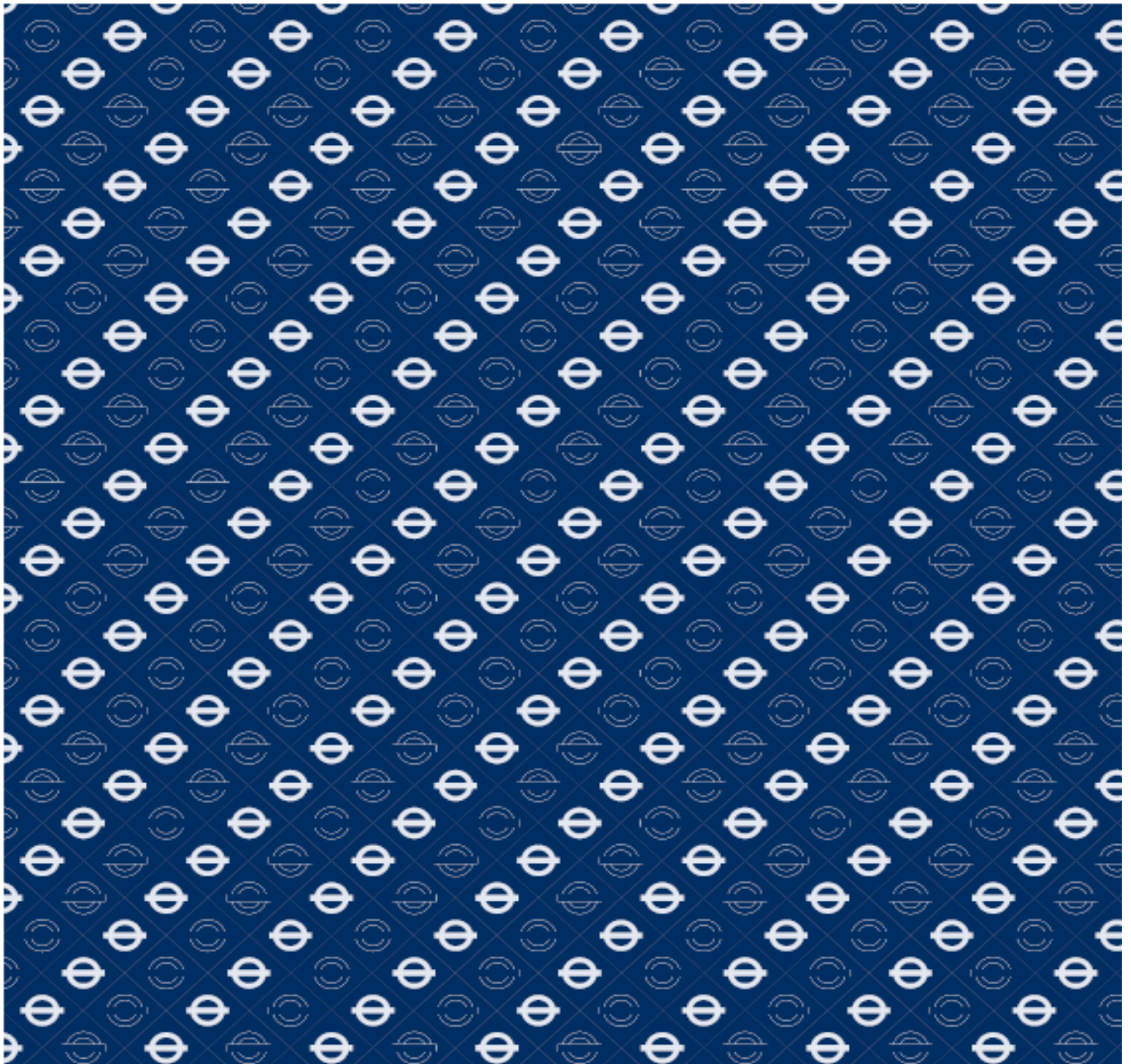
Metropolitan Police Service - <http://www.met.police.uk>

Metropolitan Police Service Crime figures - <https://www.met.police.uk/stats-and-data/>

British Transport Police <http://www.btp.police.uk/>

British Transport Police Crime figures –  
[http://www.btp.police.uk/about\\_us/your\\_right\\_to\\_information/publications.aspx](http://www.btp.police.uk/about_us/your_right_to_information/publications.aspx)

For more information on this report please contact TfL at [CPOSDirector@tfl.gov.uk](mailto:CPOSDirector@tfl.gov.uk).  
For other general TfL enquiries please telephone +44 (0)343 222 1234, textphone: +44 (0)20 7918 3015 or use the relevant contact form of TfL's website  
<http://www.tfl.gov.uk/contact/default.aspx>



September 2019

[tfl.gov.uk](http://tfl.gov.uk)

