

Northern Line Extension

BI-MONTHLY UPDATE

November-December 2016

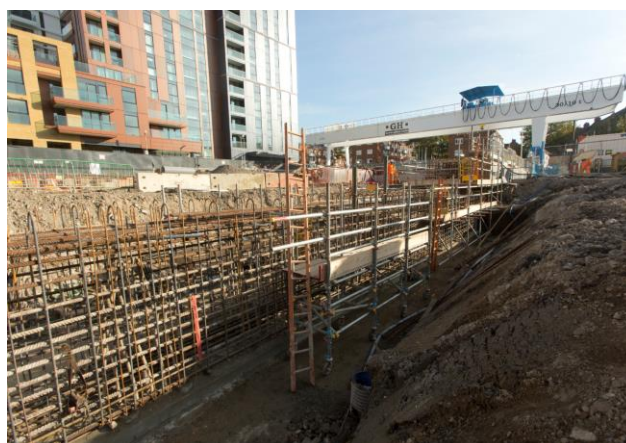
NLE Nine Elms Station

Thank you for your patience whilst we continue with the Northern Line Extension (NLE) works near you. We would like to update you on where we are and what is planned for the next four to eight weeks.

What has been completed:

The piling works which form the foundations of the station are now 100% complete. Subsequently, the site has also now demobilised all of the piling equipment, including the removal of the cranes, rigs and the bentonite plant (the large cylinders to the west of the site).

The site appearance has changed noticeably as a result of the end of piling. The 'forest' of tall masts has disappeared to allow access to the excavators to commence the next phase of construction; digging below street level to reach the base of the future station referred to as basement level 1. As you can see from the image below, a considerable amount of progress has been made in this area already.



In addition to excavation works, we also recommenced the construction of the capping beam (see above) from the east end westwards which involved breaking piles and removing the concrete guide wall.

The installation of sheet piling on the north side of site (opposite Pascal Street) was successfully completed in October. Sheet piles are installed in sequence to design depth to provide support along the excavation perimeter.

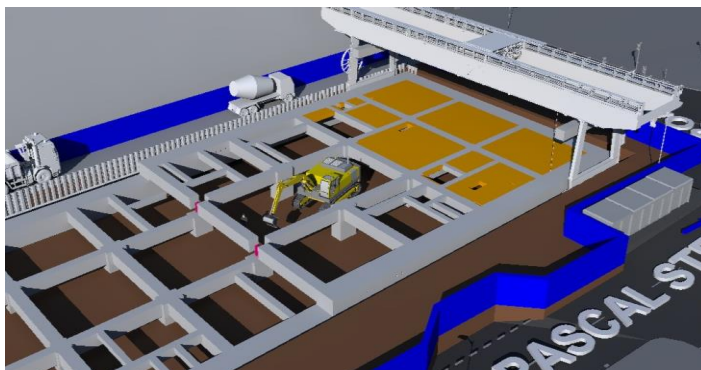
What is planned:

From the week commencing 14 November, we will be undertaking more sheet piling works in the south west corner of the site. This is necessary for us to construct the last remaining section of capping beam along the south side of our site. The sheet piles will be installed using a different technique to before as they are a lot smaller in length and thickness. We will be using an excavator and vibrating hammer to install as this is the most practical method. We expect to complete these works within just one week.

We will continue with the construction of the **capping beam which we anticipate completing by early next year, 2017. Both the above mentioned activities can be noisy.** Please be assured that the work will be carried

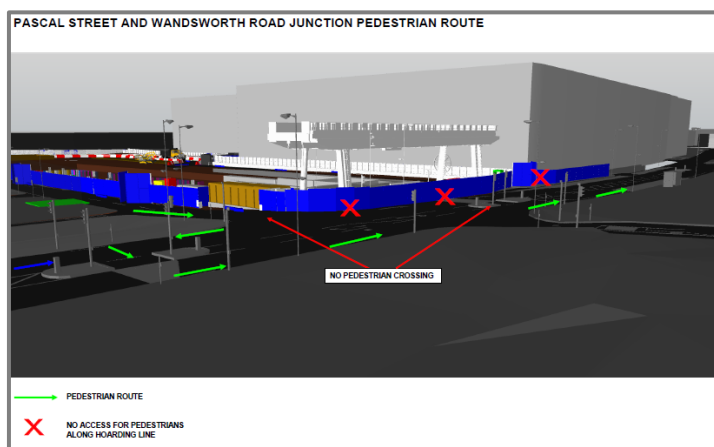
out diligently and will be monitored to ensure that it is within agreed environmental limits. We will endeavour to minimise disturbance in accordance with the Code of Construction Practice, including the control of noise and vibration using best practicable means. The majority of the breaking works will be complete by December.

Following the delivery of the capping beam, the gantry crane will be used to install many more pre cast beams to form the structural grid as per the below image. This allows us to resume the excavation works to basement 1 level.



The construction of the lay-by along Pascal Street between the two existing gates to the NLE site is ongoing. We now estimate this to be complete by Christmas.

Health and Safety is paramount across the NLE project both on and off site. As we transition into the winter months and the hours of daylight reduce, we would like to stress the importance of taking care when crossing the roads along the Wandsworth junction. We urge you to please refrain from walking alongside the NLE site hoarding and to use the current pedestrian route detailed below.



Please note the Northern Line Extension works at Nine Elms will close down for the Christmas period from 23 Dec at 18.00 until Tuesday 03 January 2017.

Our core hours:

0800 to 1800 Mondays to Fridays and 0800 to 1300 on Saturday

Your feedback is important to us. Please do get in touch if you have any questions about the works. If you have any concerns or queries, please contact us at nle@tfl.gov.uk or call our 24/7 helpdesk on 0343 222 2424