



FERROVIAL AGROMAN
LAING O'ROURKE JV

Northern Line Extension

Nine Elms and Oval

Community Liaison Group

25.01.16

Delivering the Northern line extension with

ferrovial
agroman



MAYOR OF LONDON



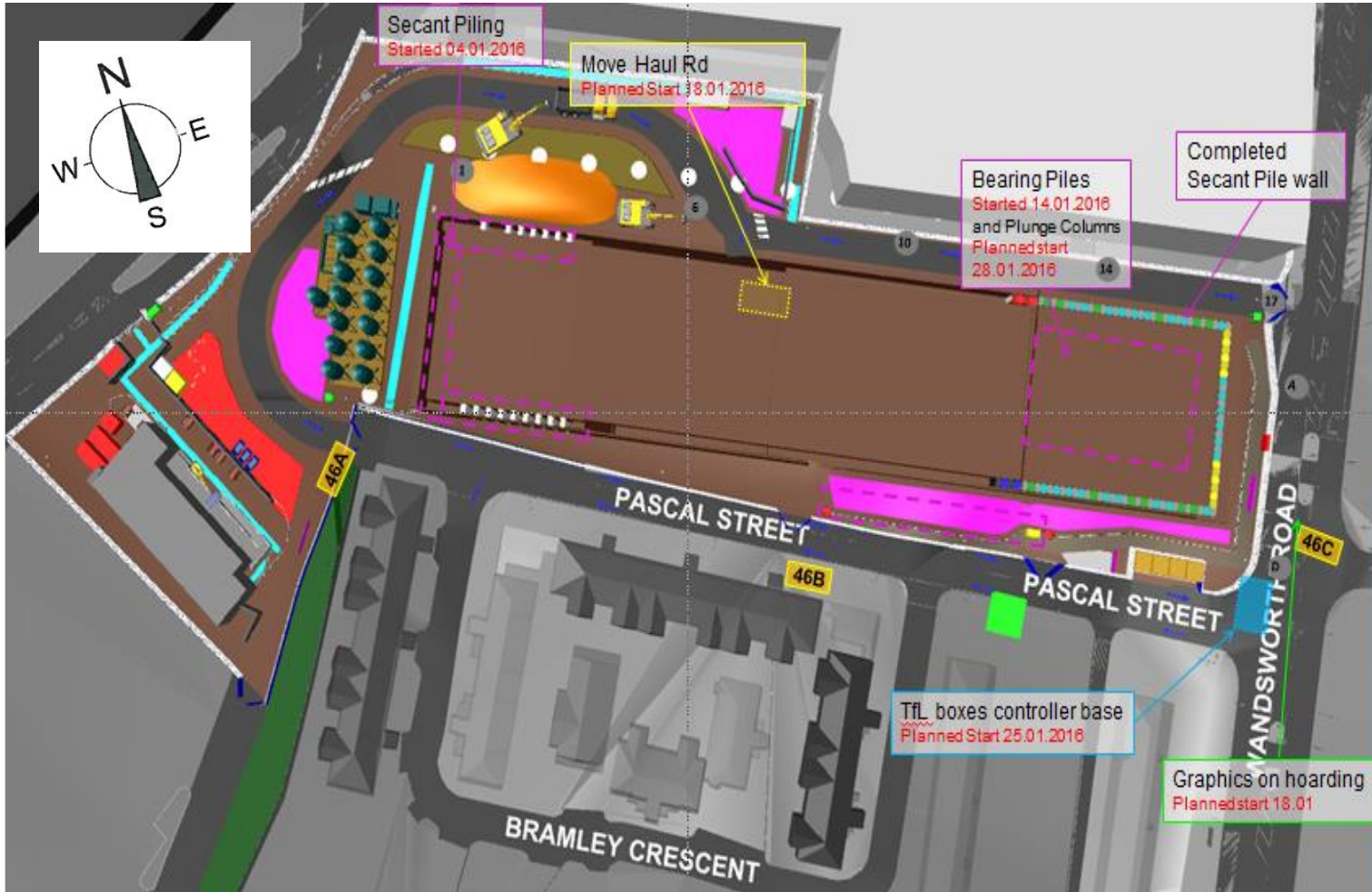
TRANSPORT
FOR LONDON



NLE Nine Elms Site Map Overview



FERROVIAL AGROMAN
LAING O'ROURKE JV



Summary Update Oct – Dec 2015

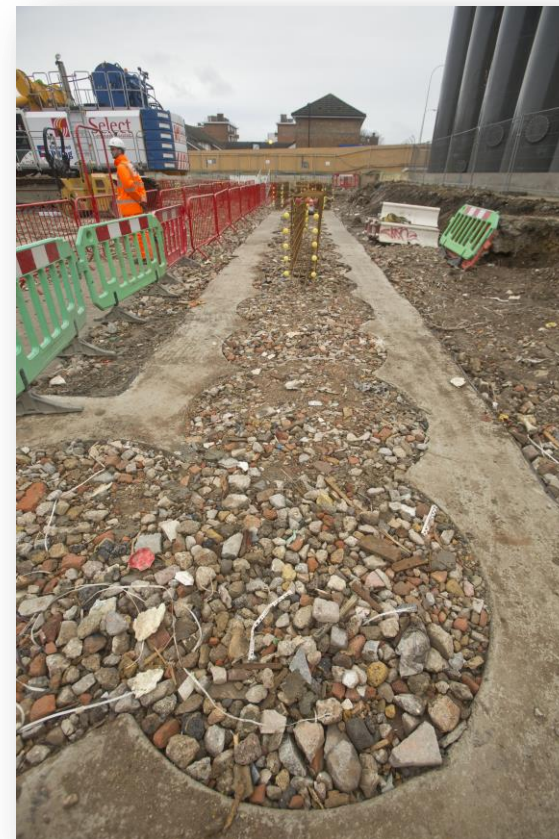
- Continue piling works
- Heavy plant arrival on site
- Completion of demolition works – Banham Security building
- Continuing with obstruction removal - piles from former Covent House
- Construction of piling platform and guide walls
- On-going monitoring installation
- Permanent power



Nine Elms Update Oct – Dec 2015



Guide wall construction and excavation



Backfilled guide wall

Nine Elms Update Oct – Dec 2015



Piling in progress



Concrete pour in progress

Nine Elms Update Oct – Dec 2015

Environmental Monitoring

Noise - 2 unattended continuous noise monitors

- 1 attended noise monitoring visit

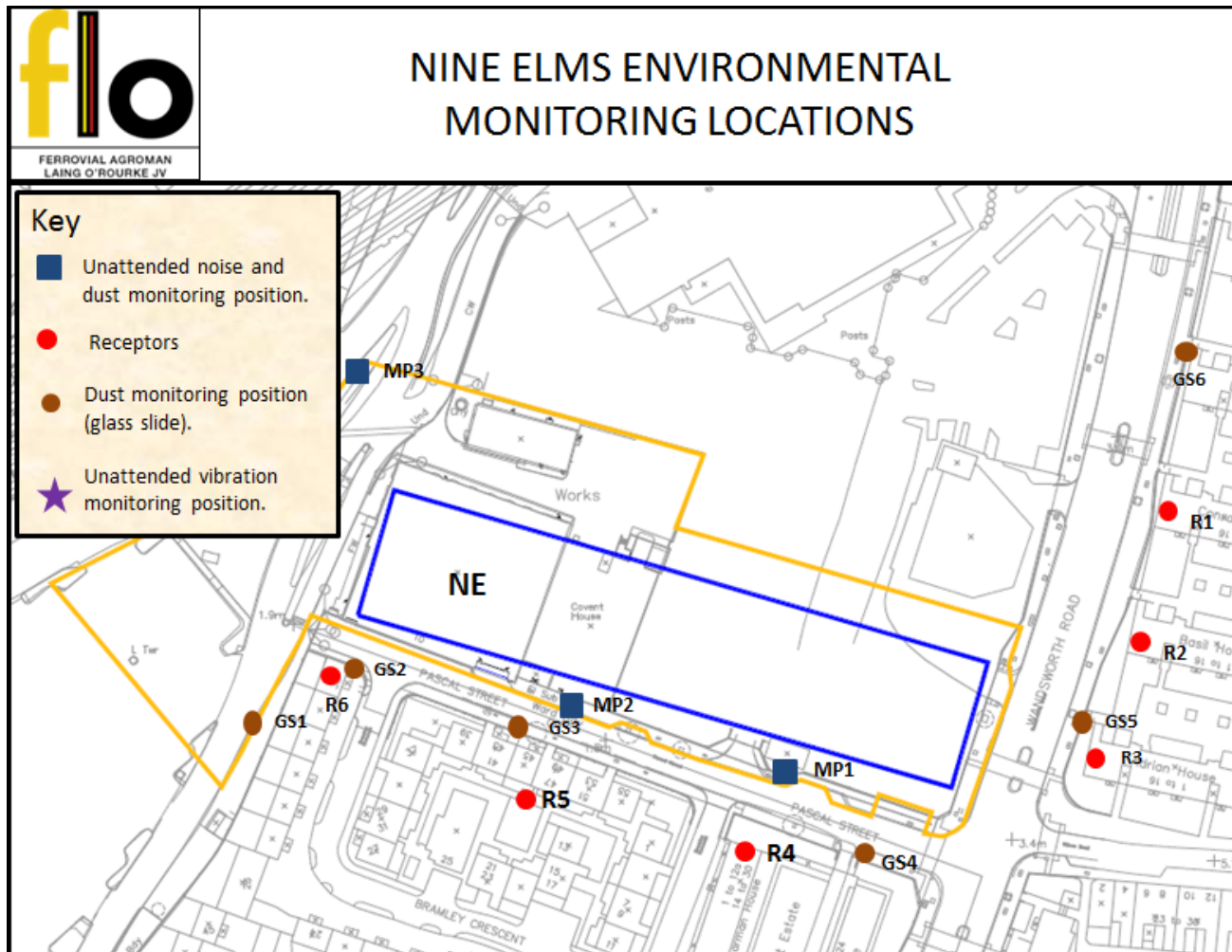
Dust - 6no dust slide locations

Monitoring Results Summary

- 0 noise exceedances, (3 amber alerts from piling works)
- 1 dust exceedance
- 0 vibration exceedances



Nine Elms Noise Monitoring Locations



Look Ahead Jan - March 2016

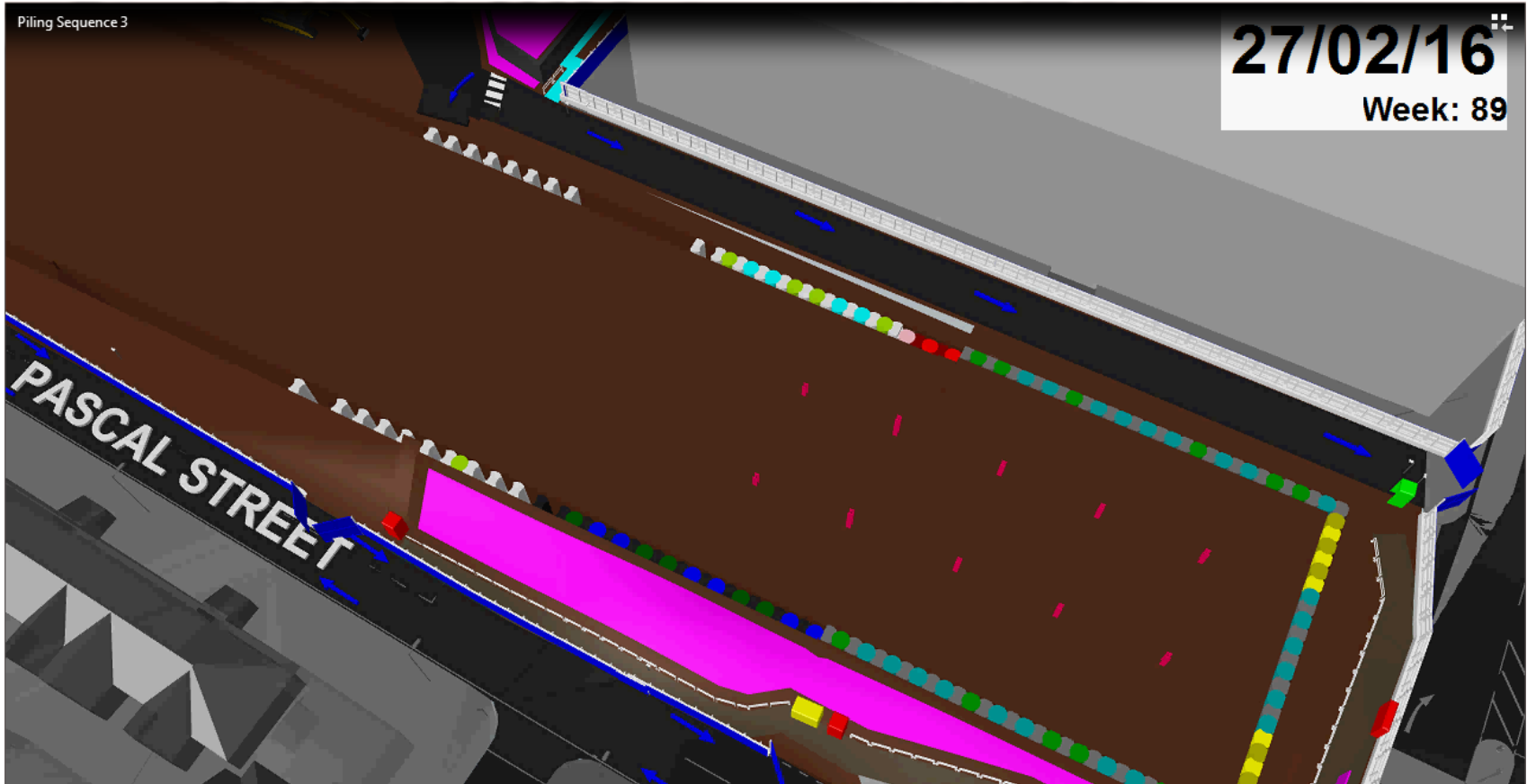
- Guide wall demolition of on the east side of site and commencement of capping beam construction
- Guide wall construction on the west side of site
- Steel Plunge column installation
- TfL Relocation of traffic control box to the corner of Pascal Street
- Install replacement hoarding graphics in Wandsworth Road
- Complete temporary haul road re-location



Nine Elms piling sequence



FERROVIAL AGROMAN
LAING O'ROURKE JV



Your Feedback



AGROMAN
OURKE JV

You Suggested

We Did

Access control through Pascal St on Sunday for Market

Gate has been reinstated to manage access

Opportunities for local businesses

LEAP group is progressing. Site canteen at Nine Elms is run by local business

Concerns regarding the delivery of information to vicinity

We have reviewed and updated contact list

Lorries parking/waiting in Bramley Crescent

Logistics team re-briefed drivers on delivery procedures

Integrated meetings with major developments in the area

NLE and Tideway are joining their CLG meetings. Attending monthly Nine Elms on the Southbank meetings

Collaboration requested for Wyvil Estate landscaping scheme

FLO is progressing with the co-funding of this project



Engagement Opportunities



FERROVIAL AGROMAN
LAING O'ROURKE JV

- Community Liaison Groups
- Attending local AGM resident meetings
- Cycle safety Events
- Charity initiatives
- School engagement/meet the buyer event

PEOPLE

LONDON'S YOUNG WOMEN GETTING ON TRACK

100 YEARS OF WOMEN in Transport

A group of young women were given a real insight into the transport and engineering industry thanks to the Route into Work course, delivered by the London Transport Museum in partnership with the award-winning Supplier Skills Team.

Part of the 100 Years of Women in Transport celebrations, 15 women currently out of work, education or training were invited to attend the three-day course designed to generate experience and employment opportunities.

The women explored the museum's historical collections before speaking to representatives from MTR Crossrail, London United, London Sovereign and Ferrovial Agroman

Charitable Award (pictured left) with Sian Rebourg from FLO.

“The course really helped me to feel more confident when speaking out loud. Being in a room with employers made the experience feel real, and now I know what I need to do next in my career.”

CHANTELLE AWOYEMI

Laing O'Rourke JV (LOJ), which is responsible for the design and build of the Northern Line Extension and currently recruiting for exciting roles.

Chantelle Awoyemi, a 21-year-old from south London, attended Route into Work and said: “The course really helped me to feel more confident when speaking out loud. Being in a room with employers made the experience feel real, and now I know what I need to do next in my career.”

The next instalment of the Route into Work course, taking place this month, will welcome back MTR Crossrail as it looks to recruit trainee train operators for its high-speed railway.

For more information about Route into Work, visit: <http://flopod.com/express>

NLE TEAM PROUD TO BE!



This award is presented to

Sian Rebourg
Northern Line Extension/FLO

Wandsworth
For helping to inspire young people to meet their full potential
2014-15

Sian Rebourg
Head of Learning, Wandsworth

27th October 2015

The NLE have been awarded by Wandsworth BEST (Business Education Succeeding Together) for our contribution to local education. Student Nasir Sherwani from Ernerst Bevin College who completed his work experience with us last July, was also awarded. Congrats!

Meet the NLE Team

Click on the link and each week find out what NLE people have been up to lately! This week featuring: Nathan Scott
Download : <http://we.tl/NlbrL1AJ2y>



Ways to contact us

- It is important that calls are logged through the NLE 24/7 helpdesk on 0343 222 2424 (Option 1)
- Email nle@tfl.gov.uk
- Regular Drop In sessions
- Please visit:

<https://tfl.gov.uk/northern-line-extension>