

Northern Line Extension

Nine Elms and Oval

Community Liaison Group 12.03.15



Summary Update

- Following award of contract and submission of Code of Construction Part Bs (COCP B) approval. to local authorities earlier in the year, we have started enabling works on all four sites.
- Main works to start during 2015 following
- Community Drop in Sessions held during first week of December 2014. These gathered comments from residents on CoCP B. Surveys were available online and printed at the sessions.
- Ongoing engagement with third parties.

NLE Project Draft timetable

Year	Key milestones
2014	Transport and Works Act Order decision, Design & Build contract signed
2015	Agreement on Code of Construction Practice Part B, Start of main works at all sites
2016	Start of Tunnel Boring Machines
2017	Completion of tunnelling
2018	Fit out of new stations, Kennington shafts complete inc reinstatement, work at Kennington station complete
2019	Testing, commissioning, trial operations
2020	NLE complete and in service

Nine Elms progress



Nine Elms	What it's been done until now
Jan - Mar 15	<ul style="list-style-type: none">• CoCP Part B submitted to Wandsworth and Lambeth on 26 January• Covent House and Boiler House incl. car park were handed over to FLO on 2 February 2015• Covent House has been established as FLO's temporary site office.• Covent Garden APEX Land handed over to FLO on 16th February 2015• Asbestos surveys carried out• Hoarding erection works on going to the above areas• Enabling works within APEX Land, i.e. sewage connection, street furniture removal, pedestrian diversions, etc.



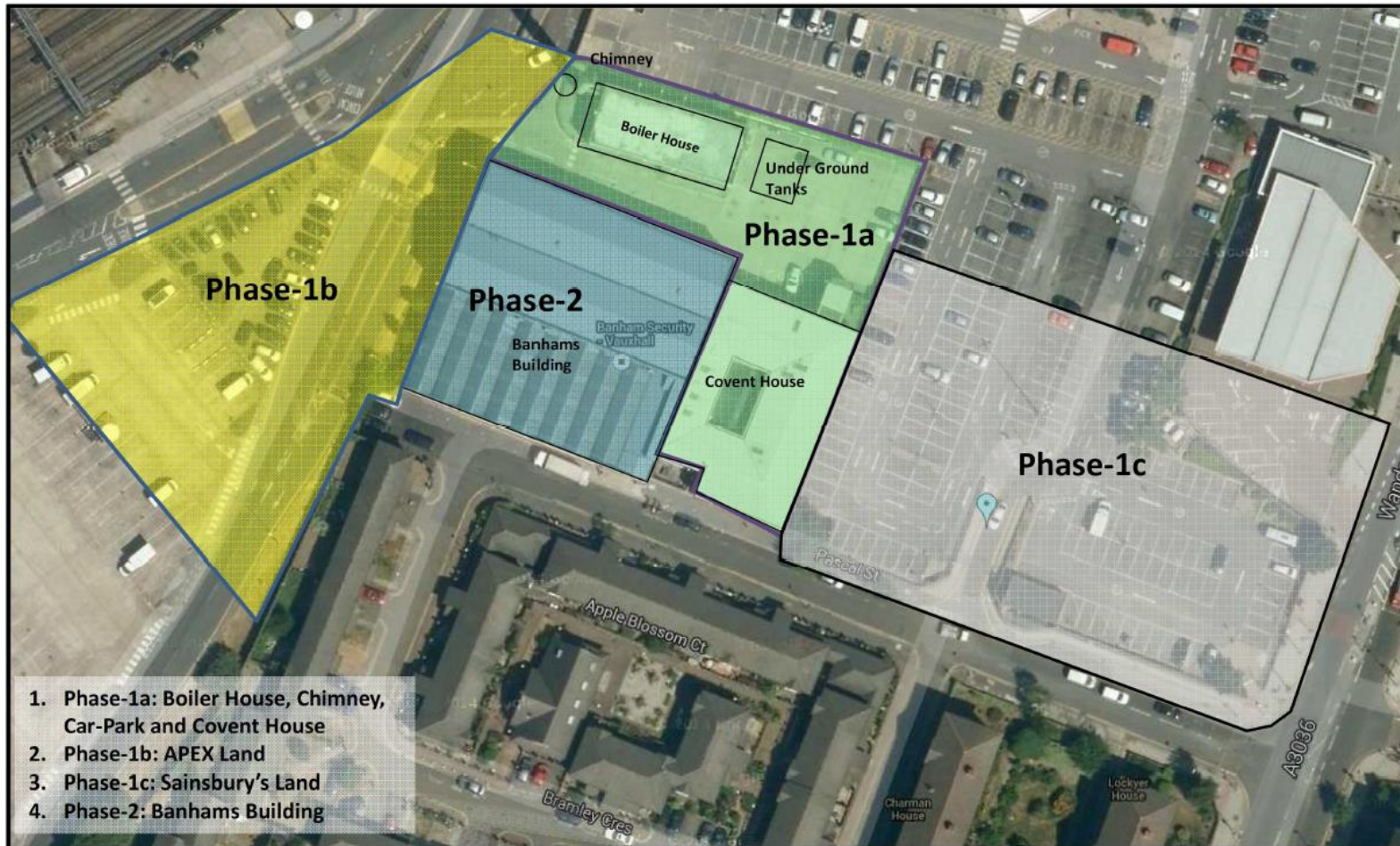
Nine Elms look ahead



Nine Elms	Enabling Works
Mar – Jun 15	<ul style="list-style-type: none">• Demolition works to Boiler House, Chimney and Covent House• New access for vehicles and pedestrians onto Pascal Street• Establishment of temporary haul road• Permanent site accommodation and welfare cabins installation within Covent Garden APEX Land• Parking restrictions and footpath / Pedestrian crossing points• Closures Pascal Street and Wandsworth road• Relocation of Sub-station at Sainsbury's car Park• New Power Link installation in front of Covent House (Pascal St)• Buried services surveys incl. services protection and trial holes• Set up monitoring equipment (noise and vibration, dust / air quality, settlement)



Summary Update



Summary Update



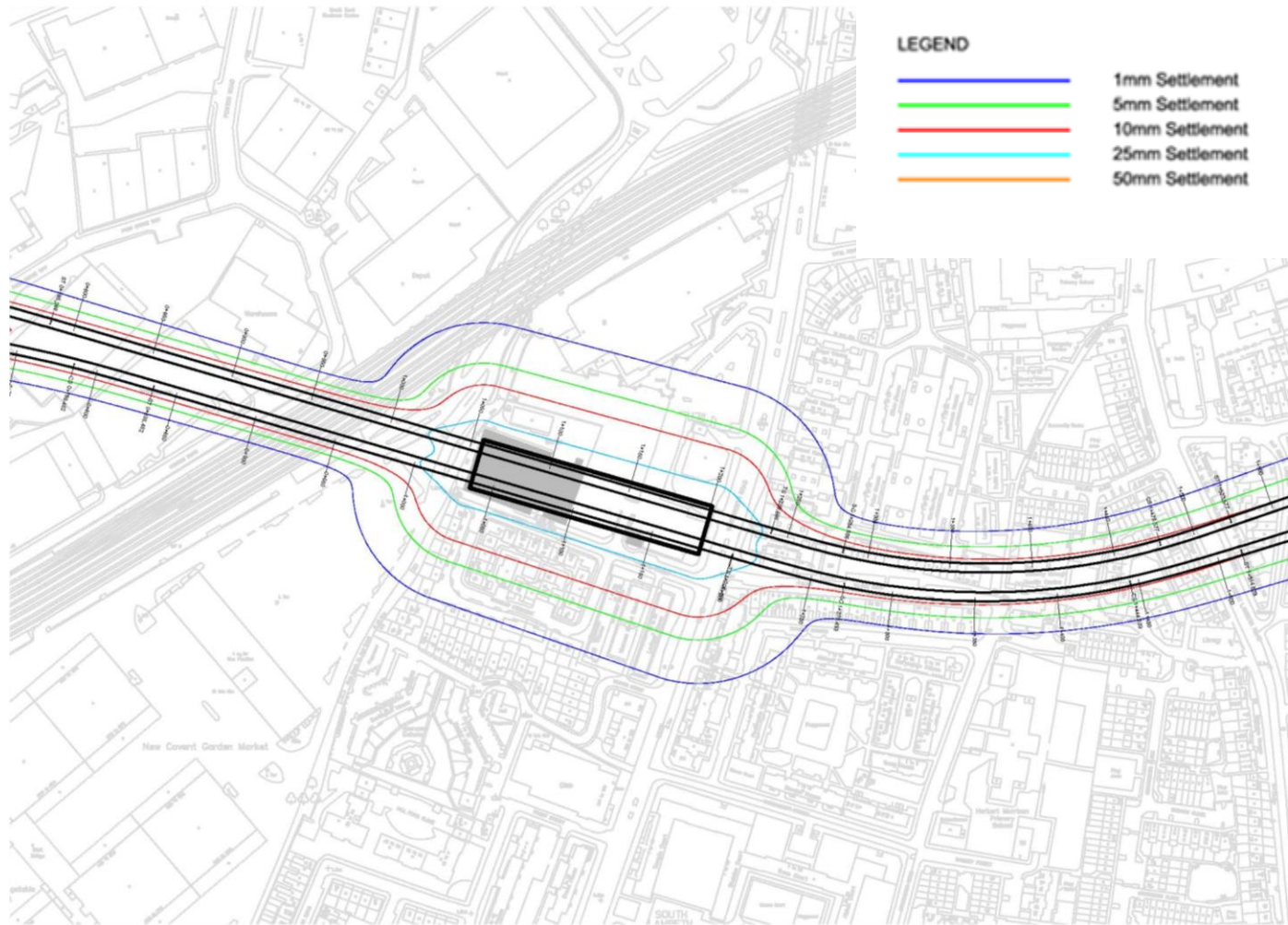
Ground Investigation



- The teams are undergoing concept designing, which aims to develop effective solutions for the design and build of the NLE project
- Ground conditions for tunnelling predominantly London Clay. An ideal tunnelling medium.



Preliminary Settlement Contours



Measuring & Monitoring



- Monitoring outline design completed February 2015.
- Consultants currently carrying out damage assessments which will inform the detailed monitoring scope.
- Monitoring tender package to market during March, and award to follow during April/May 2015.
- Installation of ground monitoring studs to commence March/April 2015.
- A minimum of 4 weeks notice will be given to building owners prior to the installation of monitoring equipment.
- Envisaged that the monitoring equipment will comprise Building Research Establishment (BRE) studs (structure levelling studs) and 3D geodetic prisms.



Monitoring techniques

Buildings – Real time data:

3D geodetic prisms



Automatic Total Station (ATS)



Prisms

ATS: an electrical/optical instrument used in modern building construction to measure slope distances from the instrument to a particular point.



Monitoring techniques

Buildings – Manual data:

BRE studs (structure levelling studs)



Defect Surveys



- Defect Surveys to be undertaken by a qualified chartered building surveyor or engineer on properties predicted to experience 1mm or more settlement.
- TfL to contact affected properties via letter.
- A minimum of 4 weeks notice will be given to building owners prior to the defect survey being carried out.
- Where necessary a second survey will be undertaken to establish the difference between the two assessments.
- There will be a written and photographic record and a copy will be available to the property owner.



Code of Construction Practice Part B

- Plans have been updated with comments from December drop in sessions as appropriate.
- Individual response to feedback to be sent imminently
- CoCP Bs submitted to London Boroughs of Wandsworth and Lambeth for discharge of planning condition in January
- The CoCP B are with Local Authorities awaiting approval - expected end of March.



Construction Noise Assessment



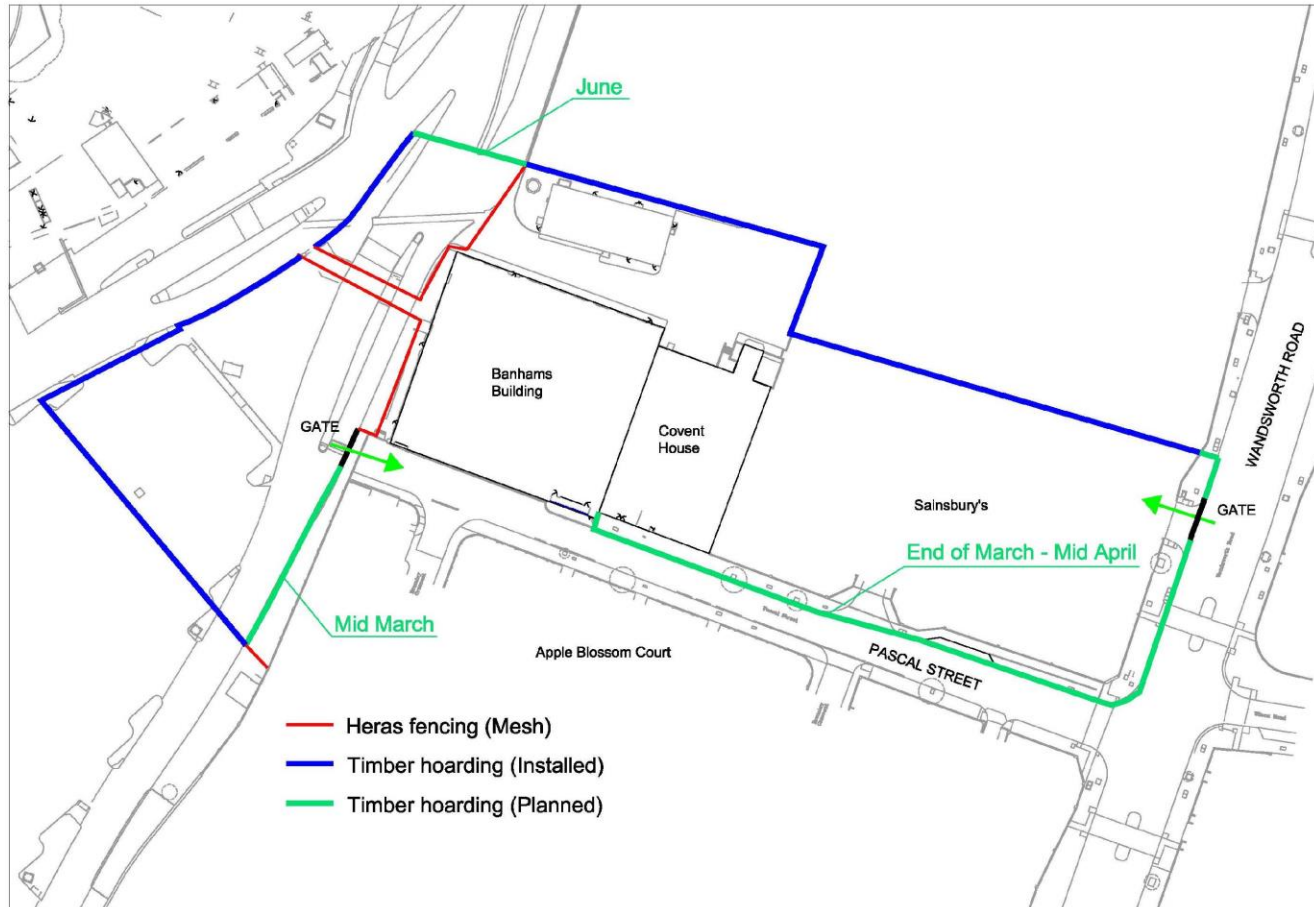
- Noise modelling has been updated from the Environmental Statement, to include methodologies and mitigation
- Predictions will be reviewed on a 6 monthly basis to capture any design changes



Hoardings

- Hoardings procured for all sites
- Hoarding erection works have progressed within former Covent Garden lands, i.e. Covent House and the APEX
- TfL design team working on design options sympathetic with the environment.
- Hoardings will be 2.4 metres high
- Corporate TfL standards to be followed

Hoarding at Nine Elms



NLE Complaints / Enquiries Summary

- 5 valid complaints received from December 14 – February 15

Date	Organisation	Address	Details of complaint	Response	Status
08/01/2015	Resident	Kennington Road	Reported wrong tree removal notifications at Kennington Green	Lambeth is dealing with the mistake at Lambeth and referred to the tree officer at Lambeth. Notification removed from incorrect tree.	Closed
16/01/2015	Resident	Imperial Court	Noise and nuisance near her property	Not related to our works, Chivas. Dealt within 24h. Though her initial contact was December 2014 Meeting held with resident and representative. Resident satisfied with outcomes.	Closed
26/01/2015	Resident	Kennington Road	Plants outside the green being removed.	The plants were removed by LBL and with no possibility of being reinstalled	Closed
22/01/2015	Resident	Imperial Court	Hoardings around the Montford Place site	Two visits have been held with resident and solutions are being investigated.	Open
02/02/2015	Resident	N/A	Works relative to Compass around Kennington Park	An email was sent to the complainant, explaining that Compass are not directly employ by FLO. Team liaises with Compass and make them aware of the issue.	Closed

Updates and newsletters

- Activity Notifications sent on January 30 and February 27
- Letter drop and email
- NLE Quarterly newsletter to be out mid March
- Monthly site activity update to come out at the beginning of April.

Nine Elms Updates / Newsletters



Delivered January 30

Delivered February 27



Northern Line Extension

Activity Notification

Nine Elms Site Establishment

30 January 2015

Dear Neighbour

The next stage of work on the Northern Line Extension (NLE) project is about to commence in your area and we would like to advise you of some activity that you may notice nearby Pascal St. From 2 February, we will start setting up a site on the current Covent Market land and the adjacent Boiler House. This is necessary to support the safe construction of the new London Underground Station at Nine Elms and the associated utility enabling works planned ahead. On a following phase, from late February, the working area will be extended to the West of Pascal St. (See maps)

Our core work hours are*:

- Monday to Friday 08:00 to 18:00
 - Saturday 08:00 to 13:00
- (Apart from use of the office and provision of security)

What to expect

- Temporary site fencing
- Site services, lighting and security establishment
- Delivery and storage of materials
- Site Accommodation and Welfare
- Pedestrian footpath diversion (phase 2)
- New access ramp and footpath at Pascal St.

Phase 1 & 2 Nine Elms Works



What we will do

As the Principal Contractor for the NLE, FLO will manage the works in accordance with the Code of Construction Practice. This will include monitoring for noise, vibration and dust in agreement with Local Authorities at Lambeth and Wandsworth.

We will have traffic marshals on site to help with traffic and vehicle access.

We apologise in advance for any inconvenience our works may cause you and we will endeavour to keep disruption to a minimum. If you have any queries, please contact our 24-hour public helpdesk. See details below.

Kind regards,

Mabel Garcia Aranda, FLO Stakeholder Manager

*The Metropolitan Police require abnormal (large) loads to arrive before 07:00 or after 19:00. We anticipate that there will be several instances where abnormal loads are required to access the site. In these instances, the vehicle will enter the site and switch off its engine whilst it awaits unloading (to be undertaken during core working hours).

nle@tfl.gov.uk
0343 222 2424

Ref: FLO-N203-2360000-COM-NTF-00001

tfl.gov.uk/northern-line-extension



Northern line extension

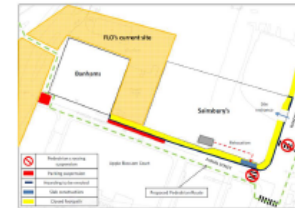
ACTIVITY NOTIFICATION

27 February 2015

Nine Elms – Planned Works March (Sainsbury's car park)

The next phase of the Northern line extension (NLE) works are about to commence in your area, and as a neighbour we would like to advise you of changes you might start noticing from early March. As principal contractor for the NLE, FLO will commence construction of a new sub-station box to relocate the existing one within Sainsbury's car park (see diagram). This should not imply significant disturbance and for safety, we will install "heras" fencing around the works. Following this, towards the end of March, permanent hoarding will be erected all around the existing Sainsbury's car park (see diagram) the design of which will be sympathetic to the environment. As a consequence of the hoardings being erected, a number of parking bays need to be suspended along Pascal St, the footpath along Wandsworth Rd and Pascal St will be closed, and both pedestrian crossing directly adjacent to the works will be closed. Please see below map with alternative pedestrian routes.

Our core working hours are Monday to Friday 08:00 to 18:00 and on Saturday from 08:00 to 13:00.



We will endeavour to minimise disturbance and will manage the work in accordance with the Code of Construction Practice, including the control of noise, vibration and dust using best practicable means. Traffic marshals will be on site to help with traffic and vehicle access and signage will be installed to manage the changes mentioned above.

If you have any concerns or queries, please contact us at nle@tfl.gov.uk or call our 24/7 helpdesk on 0343 222 2424

nle@tfl.gov.uk
0343 222 2424

Ref: FLO-N143-2360000-COM-NTF-00005

tfl.gov.uk/northern-line-extension



Consents



Approvals granted

Planning Condition 5 - removal of trees at Kennington Green and Kennington Park	L B Lambeth	Granted February 2014
Nine Elms Section 61 Consent (Control of Pollution Act – noise and vibration)	L B Wandsworth	Granted February 2014
Battersea Section 61 Consent (Control of Pollution Act – noise and vibration)	L B Wandsworth	Granted February 2014

Current applications under determination

All sites – application to discharge planning condition 10 - Archaeology	LB Lambeth and LB Wandsworth	Submitted February 2015
All sites – application to discharge planning condition 7 – CoCP pt B	LB Lambeth and LB Wandsworth	Submitted January 2015
Kennington Park, Kennington Green – applications for a Section 61 consent under the Control of Pollution Act - the minimisation of construction noise and vibration	LB Lambeth	Submitted March 2015



Consents (continued)



Current applications under determination

Kennington Park - application to discharge planning condition 18 – yellow hatched box junction – Kennington Park Place/Road	LB Southwark	Submitted January 2015
Kennington Park and Kennington Green – application to (initially) discharge Conservation Area Consent condition C (reinstatement)	L B Lambeth	Submitted January 2015
Nine Elms and Battersea - application to discharge planning condition 9 – Contaminated Land	LB Lambeth and LB Wandsworth	Submitted February 2015
Battersea – applications for approvals under Schedule 8 (Protective Provisions) of the TWAO – works within the river.	Marine Management Organisation	Submitted March 2015

Key forthcoming applications for approval

Battersea – applications for approvals under Schedule 8 (Protective Provisions) of the TWAO – works within the river.	EA, PLA	Planned be submitted March 2015
Kennington Station - application to discharge planning condition 19 – Kennington Station passenger flow monitoring protocols	LB Southwark	Planned be submitted early 2015 (direct by TfL)
Kennington Park and Kennington Green - application to discharge planning condition 9 – Contaminated Land	LB Lambeth	Planned be submitted March 2015



Jobs and apprenticeships



TfL's existing programmes

- Skills & Employment Strategy, Delivery Plan for Schools and Young People

Employment/Skills/Diversity on the NLE programme

- FLO is working in partnership with TfL and the local authorities – including the Nine Elms Vauxhall Strategy Board Employment, Training & Business Charter, Wandsworth Chamber of Commerce and Nine Elms Supply Chain
- Make sure employment/training opportunities are advertised within the job opportunity/brokerage schemes operated by Southwark, Lambeth & Wandsworth councils
- Encourage job starts for workless people in London, placement & taster positions, apprenticeships, skills development for staff, engagement with schools
- A Strategic Labour Needs and Training Plan is being developed with LA



Jobs and Business Opportunities



- FLO attended a Lambeth organised “How to be the best bet for buyers” event
- 19 February at the Kia Oval
- This was to present opportunities at the NLE and procedures on how to enter for tender packages
- Small and medium business had the opportunity to meet with major contractors



Lambeth

How to be the Best Bet for Buyers

Where:
Kia Oval
Kennington
London SE11 5SS

When:
Thursday
19 February 2015
9am – 3pm

Do you want to...

- Hear about major vehicle maintenance contracts
- Network with other businesses to develop partnerships to bid for larger contracts?
- Get expert advice on preparing and submitting tenders?
- Find out about major developments and work packages available for local subcontractors?
- Sign up with major housing contractors looking to contract with local subcontractors?
- Network with potential clients?

Where:
Hear from developers looking to work with businesses like you. Hear from industry experts and get free advice from the many exhibitors attending on the day. From understanding the pre-qualification process including health and safety, to financing major contract wins, to recruitment/employment, to gearing up to taking on large contracts. Throughout the day you will have the opportunity to speed network with other businesses and speak to exhibitors about live contracts and what you need to do to win that contract.

Programme

9.00am	Event opens and registration
9.15am	Cllr Jack Hopkins – Cabinet Member for Jobs and Growth
9.30am	Introducing South London Procurement Network
9.45am	Break – Attendees visit exhibitor stands
10.30am	Introducing Lambeth Procurement
11.00am	Julie Harmer – Member of CIPS
11.15am	Break – Attendees visit exhibitor stands
12.00pm	Lunch and Networking
1.00pm	Mears Group – How to win that contract
1.15pm	Break – Attendees visit exhibitor stands
1.30pm	Ferrovial Agroman Laing O'Rourke (FLO)
1.45pm	Break – Attendees visit exhibitor stands
2.00pm	St. James/Berkaley Group
2.15pm	Networking
2.00pm	Close

South London Procurement Network

To confirm your attendance please email info@slpn.org.uk with company and attendee's names.



Skills and Youth Engagement



Careers Expo for students 4-5 of March, Southwark.

- Co-ordinated by Southwark Council.
- Hosted at Goldsmith University NLE in attendance at the event.
- More than 150 students attended NLE workshop.
- Encourage young people to consider construction as professional option.
- Promote the NLE benefits and awareness amongst young people.



Skills and Youth Engagement



Community engagement strategy



- Draft Strategy discussed at the June – July cycle of CLG's
- Core CLG received all comments made
- Strategy and site specific engagement forecast tabled
- Southwark Career Expo March 2015.
- **6 months look ahead include:**
- Preparation and approval of a SLNT Plan.
- Preparation and approval of Youth and School Engagement Plan
- Preparation and approval of a Arts and Culture Strategy
- Activities around all four sites to ensure communication and engagement: Drop in sessions / Visits / Events / School Liaison



Thank you