

# Northern Line Extension

## Kennington Green

### Community Update

#### 28 January 2020

MAYOR OF LONDON



# Kennington Green Progress: Oct 19 – Jan 20

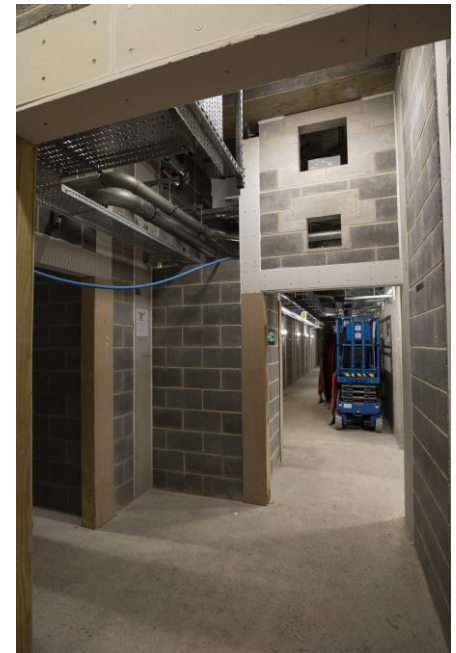


Key electrical transformer has been installed including utility cable connected into the street in Montford Place



Cable trays and ducting is making good progress

Main internal walls are now complete inside the basement



# Kennington Green Progress: Oct 19 – Jan 20

Waterproofing membrane installation is approx. 50% completed

Brickwork to the headhouse building will commence in February.



Removal of the temporary foundations is progressing – approx. 75% complete at the moment

# Kennington Green Lookahead: February – May key activities

## At the surface level

- Brickwork cladding to the headhouse will commence. This will require a scaffold to be erected around the headhouse
- Waterproofing of the basement structure will be completed
- Completion of breakout of temporary shed foundations
- Commencement of landscaping works around the Green.

## Below Ground

- Cable tray and ducting installation will continue
- Ventilation equipment will be installed
- Installation of the fire fighting lift will continue
- Installation of doors to rooms will continue



# Kennington Green Landscaping + Headhouse Lookahead:



MAYOR OF LONDON





# Kennington Green Landscaping + Headhouse Lookahead:



MAYOR OF LONDON



# Kennington Green Landscaping + Headhouse Lookahead:

## 2 Kennington Green Shaft - Head House

### 2.1 Architectural Intent

2.1.1 The Kennington Green Shaft head house is located within a Conservation Area, requiring architectural intervention to be respectful of its context. The head house presents a confident, contemporary brick design reflective and complementary of its historic surroundings.

2.1.2 The material palette is intended to complement the head house design along with the surrounding context. These external finishes are therefore limited to a high quality, durable, complimentary colour and texture with an importance placed on the use of brick and good detailing, as shown in Figures 1 and 2.

2.1.3 The brick, mortar and metal have been reviewed following the Planning Committee outcome in November 2016 and the Public Consultation in March-April 2017. The brick choice has been updated to reflect the results of the Public Consultation survey and the mortar has been updated to compliment the brick. The mortar joint is to be recessed as agreed with London Borough of Lambeth Planning.

### 2.2 Material Palette

**01a.** Buff London stock type brick, **01b.** Flemish bond. **01c.** Yellow medium mortar, recessed joint.

**02.** Stone coping.

**03.** Woven stainless steel powder coated mesh behind buff London stock type brick fins. Dark bronze colour or similar subject to Architect's review.

**04.** Bronze satin anodised aluminium louvre. United Anodisers Anolok 545 metallic finish or similar subject to Architect's review.

**05.** Powder coated steel louvred door (on south facing facade). Bronze colour to match anodised aluminium louvre. Steel bronze 2 Interpon D2525-Y2217F matt or similar subject to Architect's review.

**06.** Powder coated steel door. Bronze colour to match anodised aluminium louvre. Steel bronze 2 Interpon D2525-Y2217F matt or similar subject to Architect's review.

**07.** Granite flags. Refer to landscape design package for more information. Sample is not required.



Figure 1 View from north-east on Kennington Road



# Kennington Green Landscaping + Headhouse Lookahead:

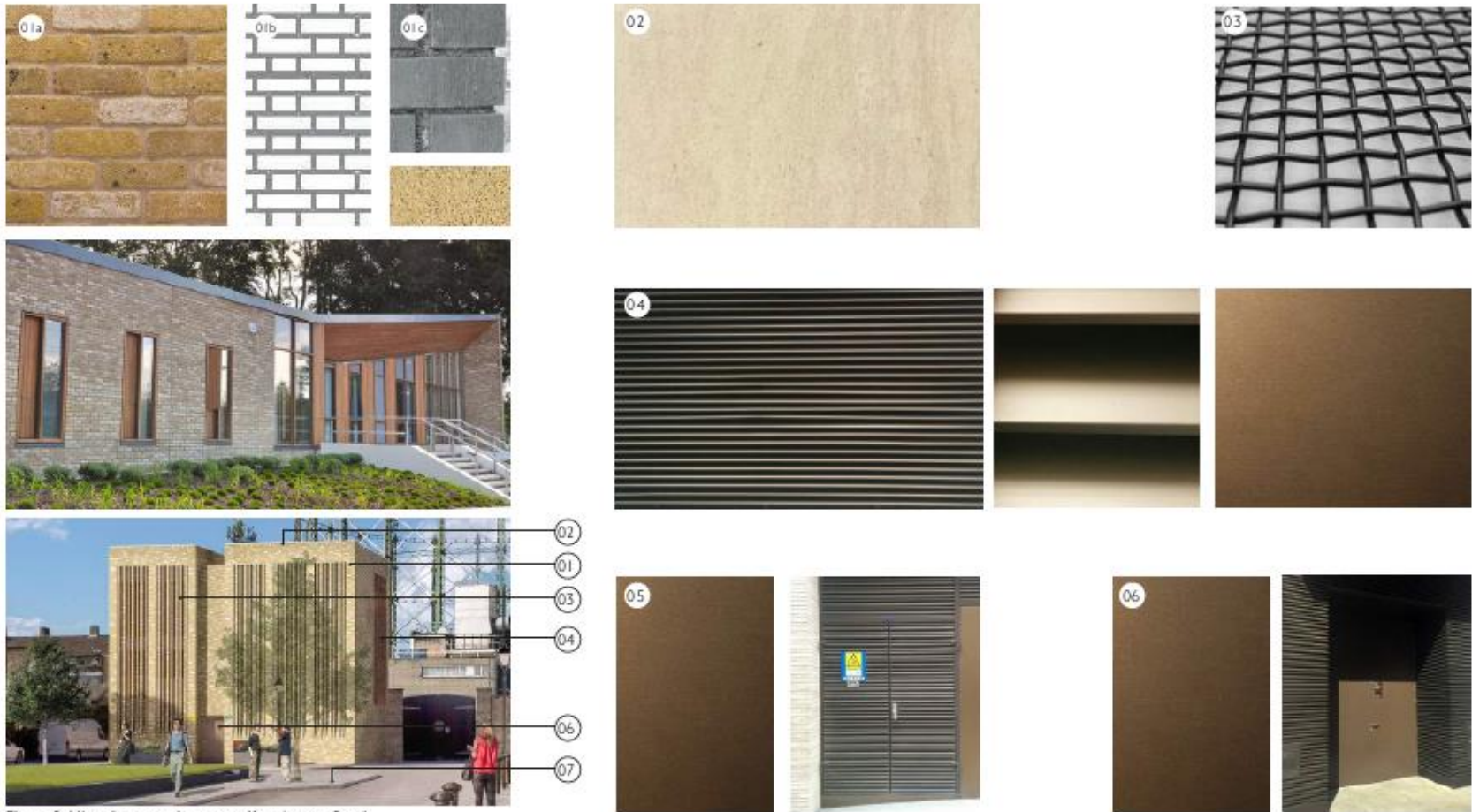
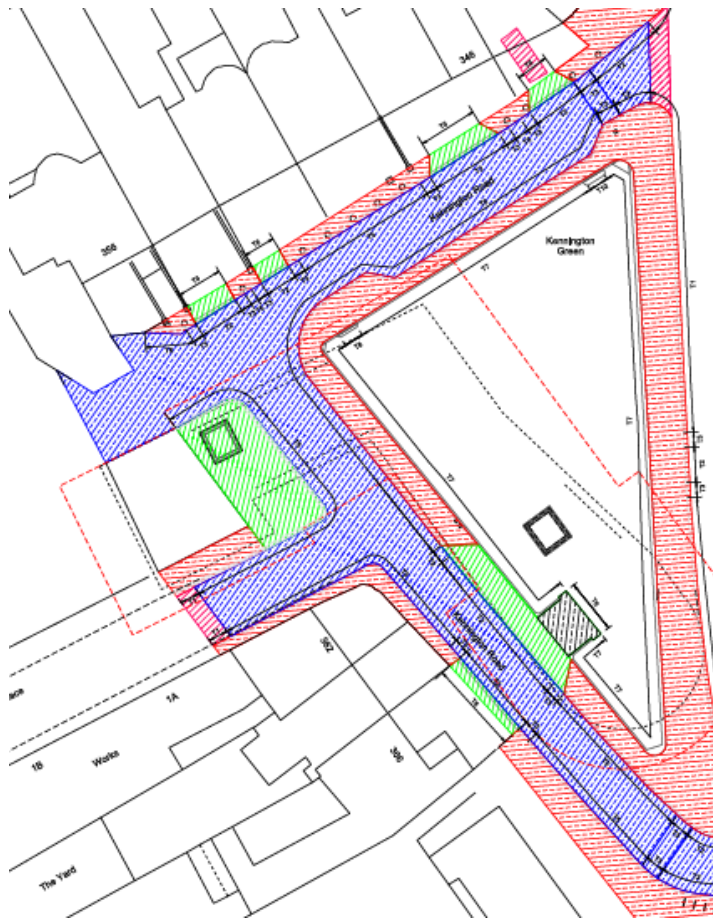


Figure 2 View from north-east on Kennington Road



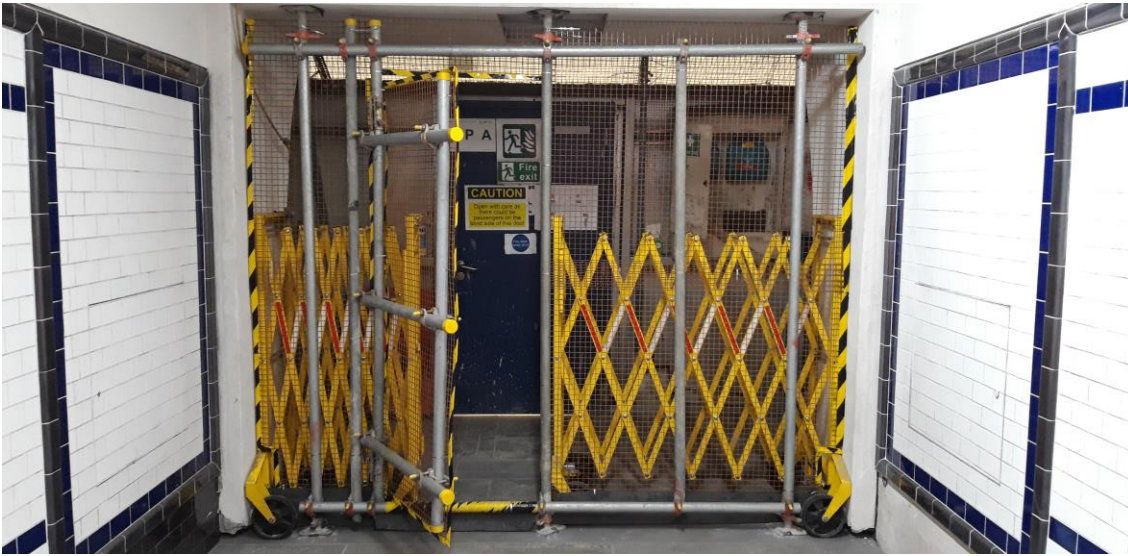
# Kennington Green Landscaping Lookahead:



# Kennington Green – Works Timeline Lookahead

Activity	Start Date	End Date
Kennington Green Headhouse - Brickwork Facade	February 2020	May 2020
Utility works scheduled to take place at the on Kennington Green Montford Place – <i>Thames Water works – provisional</i>	April 2020	April 2020
Mechanical & Electrical Installation of equipment inside the headhouse structure	Autumn 2019	Autumn 2020
Removal of concrete hardstanding from Kennington Green site, landscaping works and reinstatement of new roads and paving.	March / April 2020	June 2020
Removal of main hoarding – access to the headhouse area will be required to 2021.	Spring 2020	Summer 2020
Tree planting	Autumn 2020	Winter 2020

# Kennington Station Progress: February to May



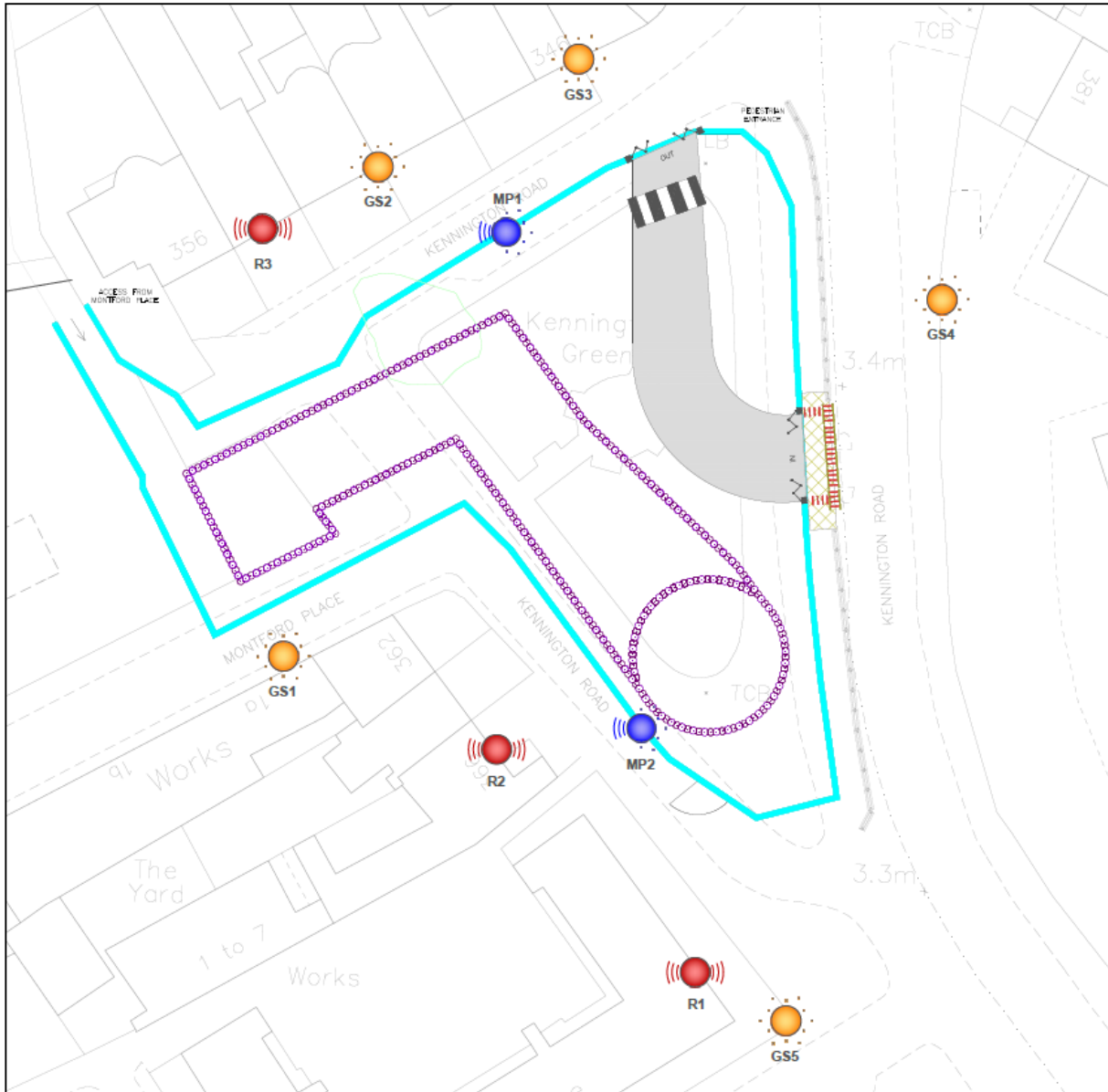
## Progress:

Tiling for walls and floors is almost complete  
Installation of new lights and CCTV cameras is ongoing

## Lookahead:

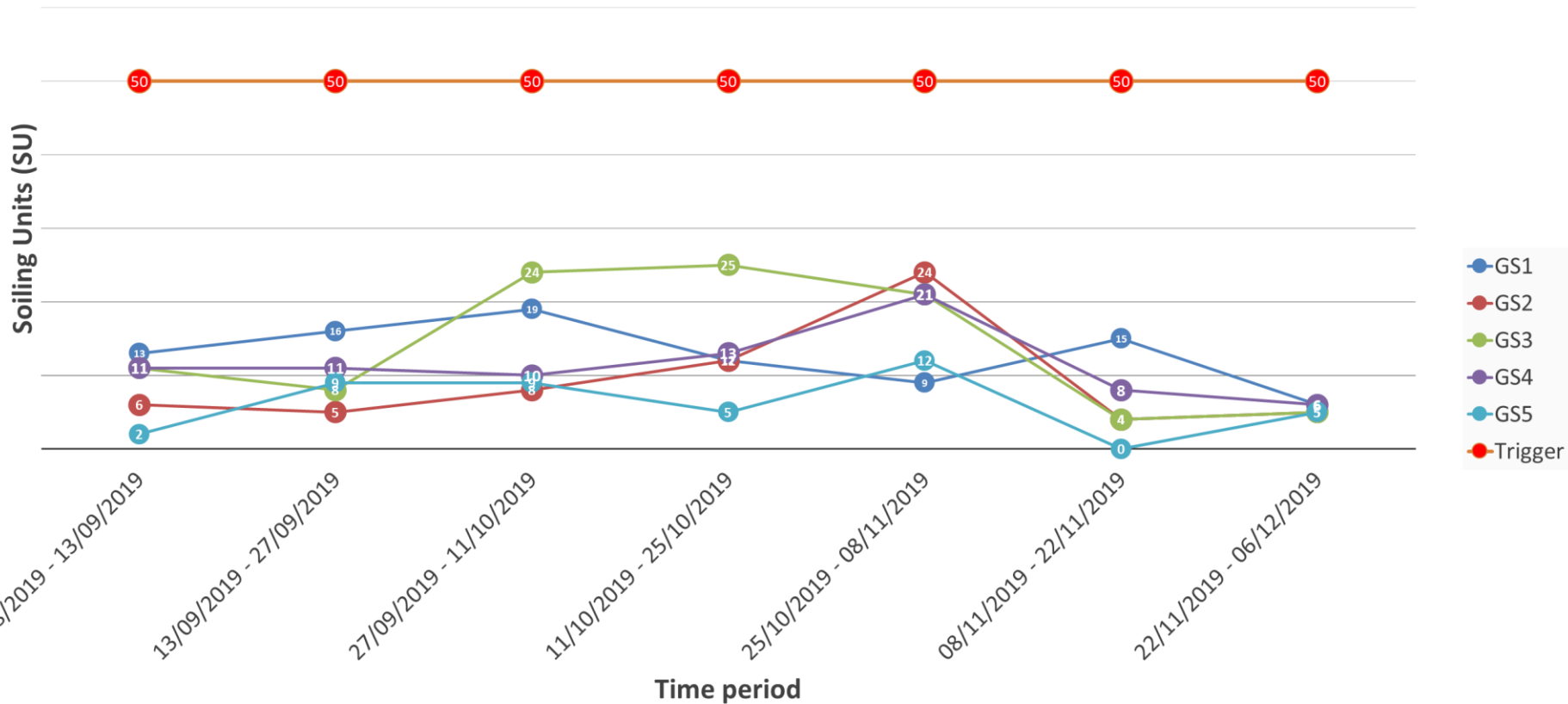
Temporary hoardings will start to be removed to allow the final tie ins and completion of the works.  
Commissioning of CCTV, lights and speakers will then commence  
Opening date of the new passage ways is not yet confirmed.





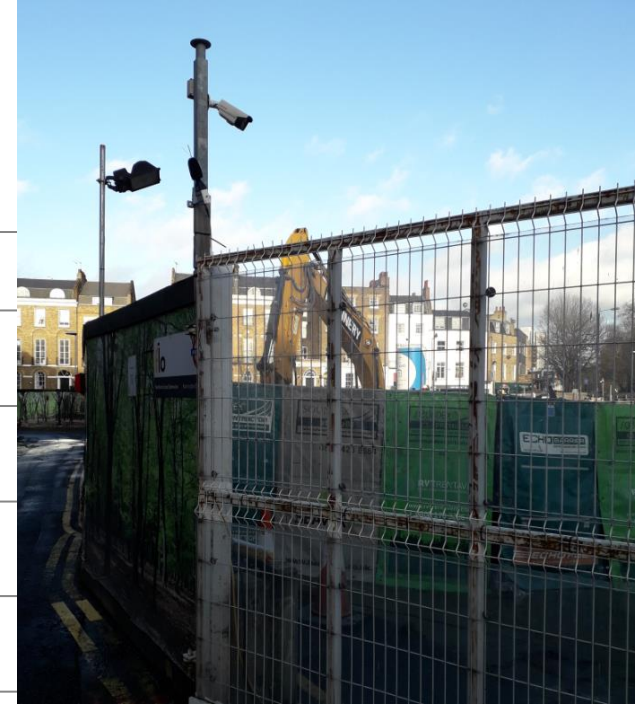
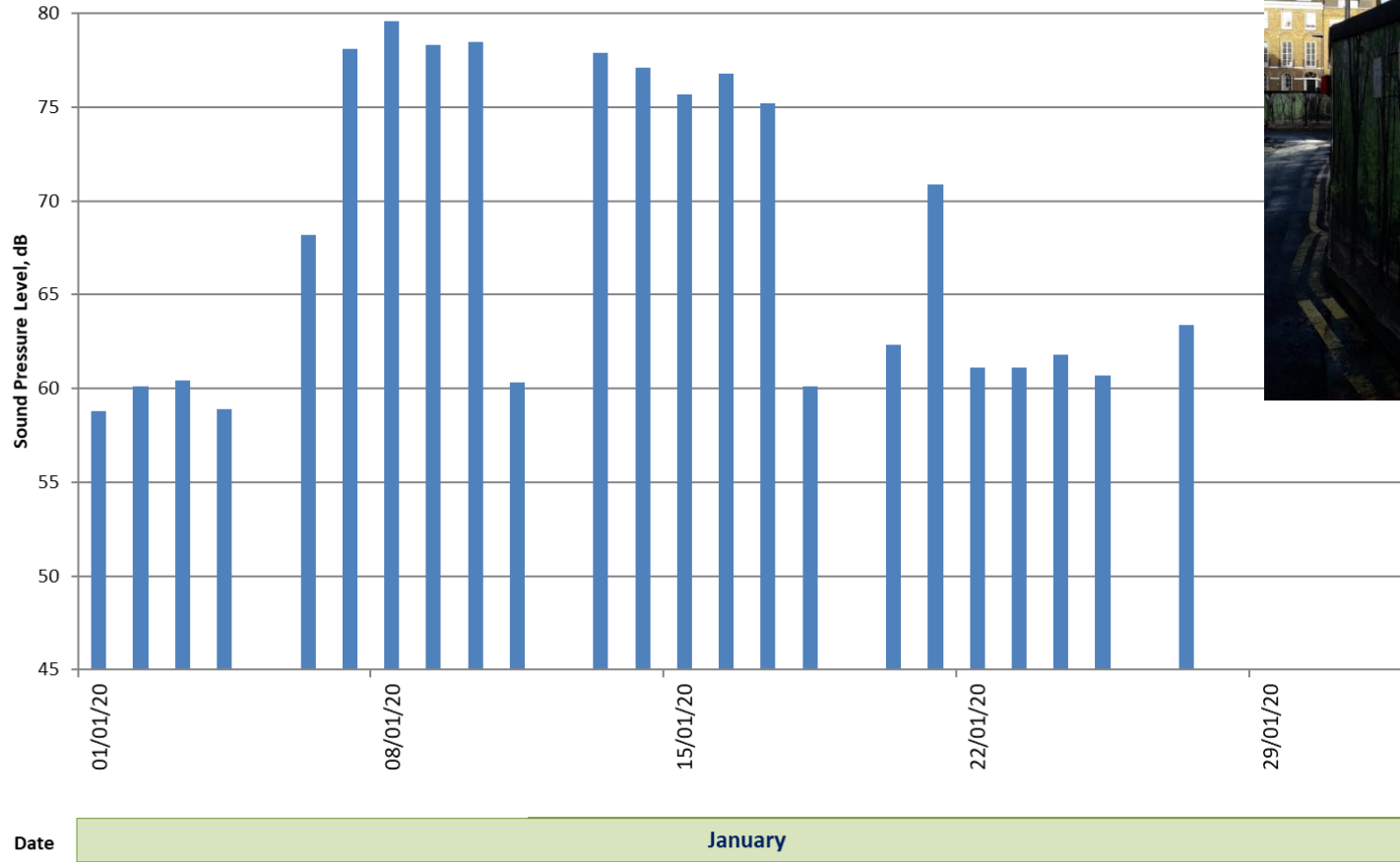
# Kennington Park Progress: July to Oct

NLE - Ken Green - Fortnightly Passive AQ monitoring



# Kennington Green: Jan 2020 Noise Levels

## Noise Time History: Receptor R3 - Sherwin House





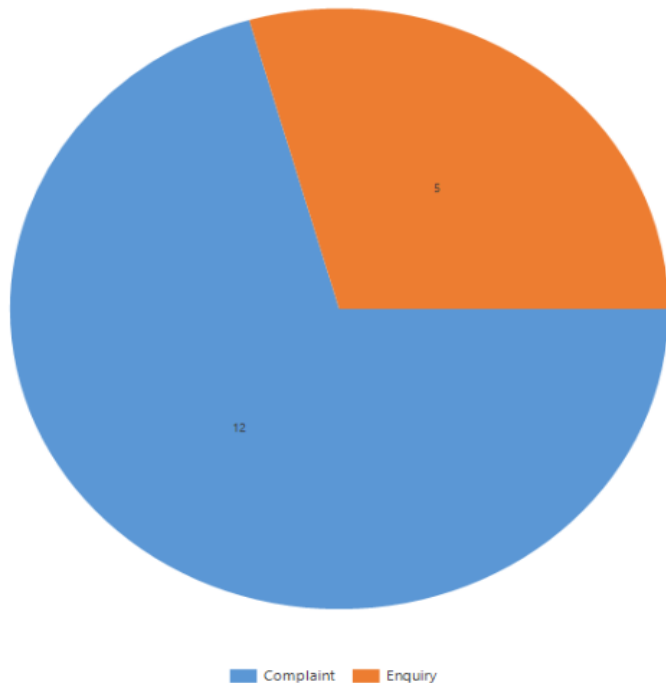
# Enquiries and complaints



Stats for Kennington Green and Montford Place: 8 April 2019 to 28 January 2020

## Case status:

**Total:** 17 cases  
 Active : 0 (0%)  
 Resolved: 17 (100%)

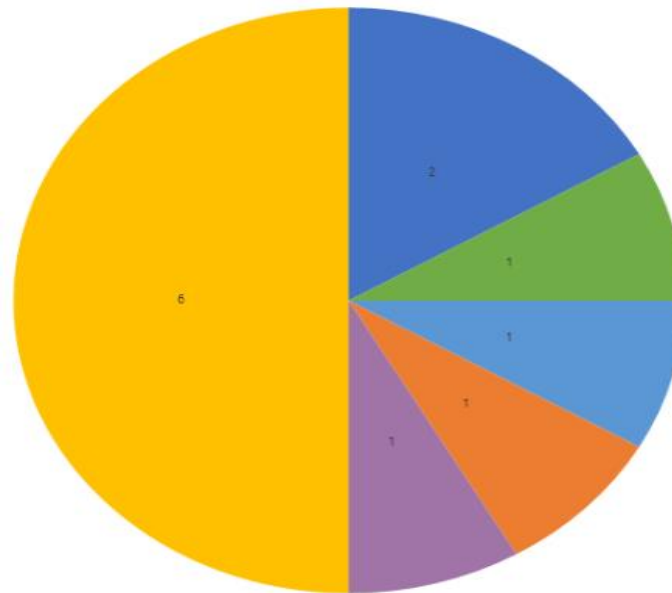


## Complaint type:

### Total:

**12 complaints**

- Request for help / community involvement: 2 (17%)
- Traffic management: 1 (8%)
- Defect survey: 1 (8%)
- Lighting: 1 (8%)
- Miscellaneous: 1 (8%)
- Noise and Vibration: 6 (50%)



# Community Engagement and NLE Skills and Employment



2 students completed **work experience** on the project from **Sacred Heart**.

Supported a business breakfast event at **Sacred Heart** (Southwark)

Attended a meet the professionals event at **St Martin in the Fields** (Lambeth)

Careers carousel at **St Saviours & St Olaves** (Southwark)

1 Dragons den activity – Landsdowne school (Lambeth)



# Ways to contact

- It is important that calls are logged through the NLE helpdesk on 0343 222 2424 (Option 1)
- Email [nle@tfl.gov.uk](mailto:nle@tfl.gov.uk)
- <https://tfl.gov.uk/northern-line-extension>
- Drop In sessions
- For **Noise and Vibration** related issues, please call: 0343 222 1234 or visit [www.tfl.gov.uk/contact](http://www.tfl.gov.uk/contact)