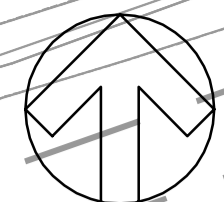
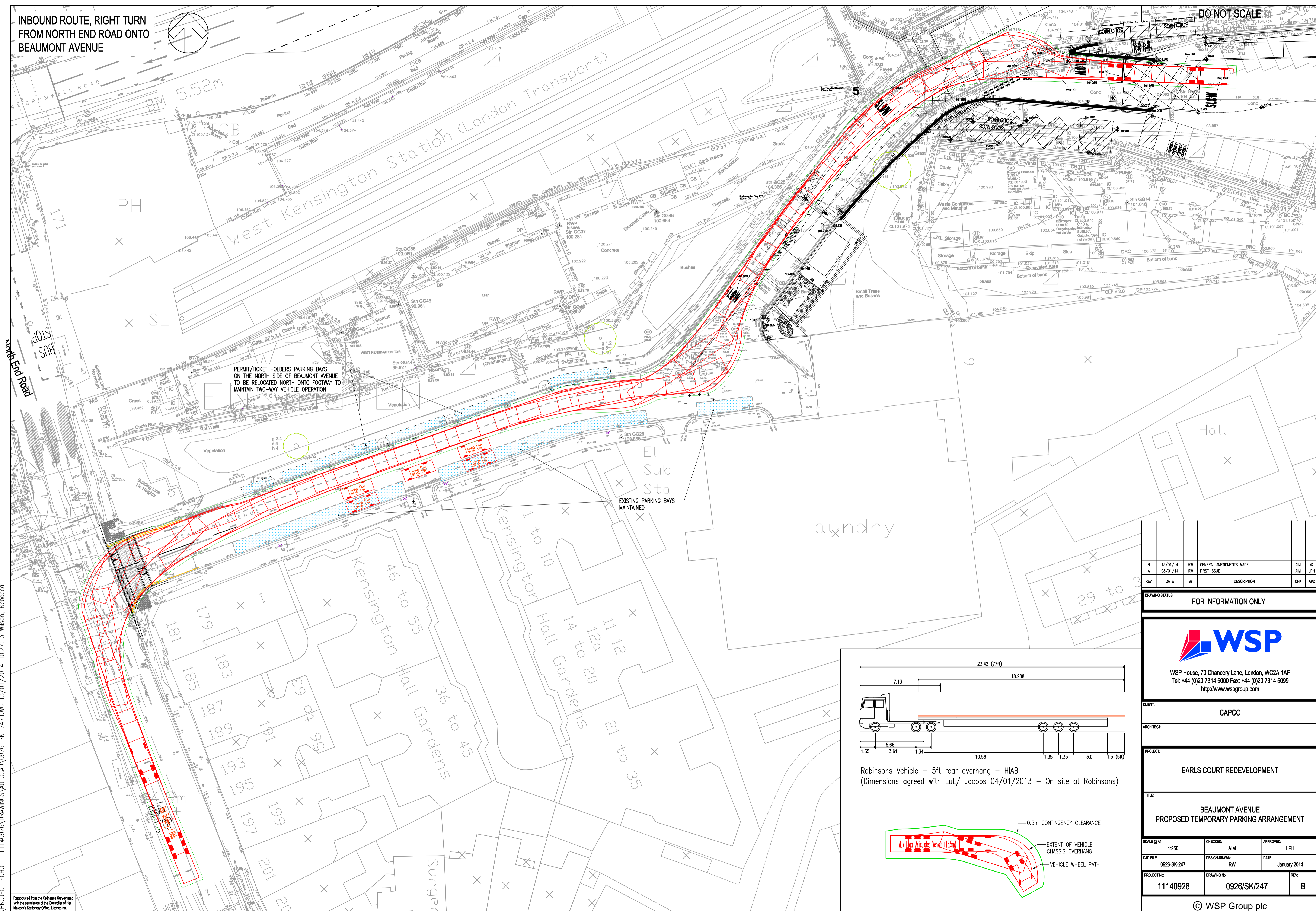


INBOUND ROUTE, RIGHT TURN FROM NORTH END ROAD ONTO BEAUMONT AVENUE



DO NOT SCALE



Y:\PROJECT ECHO - 11140926\DRAWINGS\AUTOCAD\0926-SK-247.DWG 13/01/2014 10:27:13 Wilson, Rebecca

Reproduced from the Ordnance Survey map with the permission of the Controller of Her Majesty's Stationery Office. Licence no. 100048755. Crown copyright reserved.

REV	DATE	BY	DESCRIPTION	CHK	APP
B	13/01/14	RW	GENERAL AMENDMENTS MADE	AM	Ø
A	08/01/14	RW	FIRST ISSUE	AM	LPH

DRAWING STATUS: FOR INFORMATION ONLY



WSP House, 70 Chancery Lane, London, WC2A 1AF  
Tel: +44 (0)20 7314 5000 Fax: +44 (0)20 7314 5099  
http://www.wspgroup.com

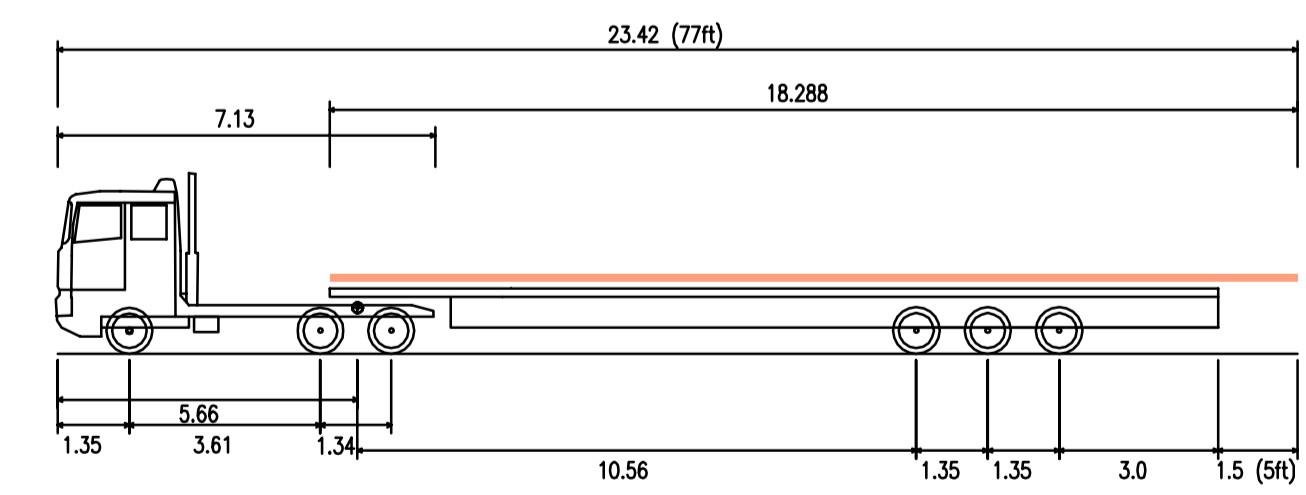
CLIENT: CAPCO

PROJECT: EARLS COURT REDEVELOPMENT

TITLE: BEAUMONT AVENUE PROPOSED TEMPORARY PARKING ARRANGEMENT

SCALE @ A1:	1:250	CHECKED:	AIM	APPROVED:	LPH
CAD FILE:	0926-SK-247	DESIGN DRAWN:	RW	DATE:	January 2014
PROJECT No:	11140926	DRAWING No:	0926/SK/247	REV:	B

© WSP Group plc



Robinsons Vehicle - 5ft rear overhang - HIAB  
(Dimensions agreed with LuL/ Jacobs 04/01/2013 - On site at Robinsons)

