

Transport for London

2014/2015 Crime statistics bulletin

1 April 2014 - 31 March 2015

**Transport for London  
Crime and anti-social behaviour annual bulletin**

**1 April 2014 – 31 March 2015**

**Table of Contents**

1. Introduction .....	3
2. Bus-related Crime 2012/13–2014/15.....	5
3. London Underground and Docklands Light Railway Crime 2012/13–2014/15 .....	10
4. London Overground Crime 2012/13 – 2014/15 .....	11
5. London Tramlink Crime 2012/13 – 2014/15 .....	12
6. Useful links .....	13

## 1. Introduction

This annual summary bulletin brings together crime statistics from the Metropolitan Police Service (MPS) and British Transport Police (BTP) to provide a summary of recorded crime relating to TfL's public transport networks during Financial Year (FY) 2014/15 (1 April 2014 – 31 March 2015). This annual bulletin focuses on the London Bus network, London Underground (LU) / Docklands Light Railway (DLR)<sup>1</sup>, London Tramlink and London Overground (LO) service.

The figures reported in this bulletin for the bus network are based on official MPS figures for bus-related crime unless otherwise stated. There is no distinct category of 'bus crime' in the MPS crime recording system. Recorded crime data is extracted from the MPS system using a complex query that searches all MPS crime for transport venue codes and those that have the word bus, bus stop, bus station and transport related words somewhere in the electronic case file. For this reason, some crimes that did not occur on the bus network will be included in the figures. This is different from the BTP as all crimes dealt with by the BTP and included on their crime recording system relate directly to the rail network.

Recorded crime figures relate to crime recorded by the MPS and BTP during FY 2014/15 and are consistent with Home Office counting rules. The figures do not include crimes that have not been reported to the police or those that the police decide not to record as crimes.

Public transport in London continues to be a safe and low crime environment. Currently, over ten million passengers travel on the TfL's public transport services each day with very few of them ever experiencing or witnessing crime.

Despite low levels of crime of the network, increases were seen in some crime types on some modes compared with the previous year. TfL and its police partners are redoubling their efforts and have put measures in place to deal with those issues.

The headline figures include:

- The levels of pan-modal transport crime<sup>2</sup> in 2014/15 were 8.3% lower (2,502 fewer offences) than in 2013/14 and the rate of crime has decreased to 7.0 crimes per million passenger journeys (from 7.7 in 2013/14), as can be seen in chart 1 and table 1.
- Levels of bus-related crime in 2014/15 were 5.7% lower (1,029 fewer offences) than in 2013/14 and the rate of crime for the bus network has fallen to 7.2 crimes per million passenger journeys (from 7.5 in 2013/14).
- Crime on LU/DLR decreased during 2014/15 by 12.4% (1,359 fewer offences) than in 2013/14 with the rate of crime falling to 6.8 crimes per million passenger journeys (from 8.0 in 2013/14).
- Crime on London Overground (LO) decreased during 2014/15 by 4.9% (41 fewer offences) compared with the previous year, despite a significant increase in passenger journeys of around 4.1 million. Crime on LO remains at a very low level and is one of safest modes of travel in London. The rate of crime fell to 5.7 from 6.2 in 2013/14.

---

<sup>1</sup> Crime figures for LU and DLR are reported together as these networks are policed by the same division of the BTP.

<sup>2</sup> The pan-modal transport crime figure and rate is based on the aggregate crime and passenger journey figures for the bus, LU/DLR, Tramlink and LO networks.

- Crime on London Tramlink fell by 22.7% during 2014/15 (73 fewer offences) compared with 2013/14 with the rate of crime falling to 8.1 crimes per million passenger journeys (from 10.3 in 2013/14).

Chart 1

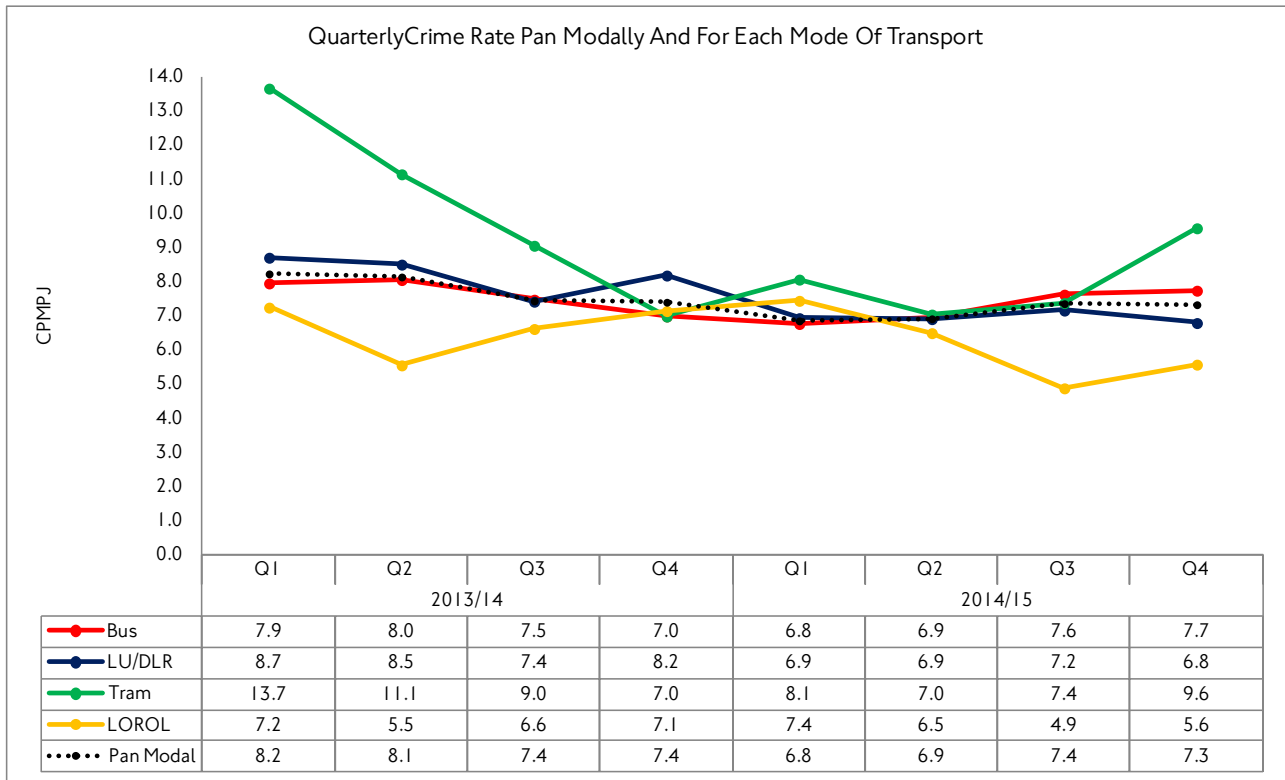


Table 1

Network	2012/13		2013/14		2014/15	
	Crimes	Rate	Crimes	Rate	Crimes	Rate
Bus	20,120	8.6	18,138	7.5	17,109	7.2
London Underground /Docklands Light Railway	12,804	9.6	10,958	8.0	9,599	6.8
London Overground	841	6.7	842	6.2	801	5.7
London Tramlink	361	12.0	322	10.3	249	8.1
Pan-Modal	34,126	8.9	30,260	7.7	27,758	7.0

## 2. Bus-related Crime 2012/13–2014/15

Table 2 shows the break-down of MPS bus-related<sup>3</sup> crime by the major crime categories used by the MPS for 2012/13, 2013/14 and 2014/15. It includes the rate of crime<sup>4</sup> for each of these categories with the exception of burglary<sup>5</sup>. In 2014/15, there were 7.2 crimes for every million passenger journeys made on the bus network. Borough bus-related crime figures are shown in table 3.

Table 2

Crime Type	2012/13		2013/14		2014/15	
	Crimes	Rate	Crimes	Rate	Crimes	Rate
Burglary	60	N/A	53	N/A	51	N/A
Criminal Damage	1,501	Less than 1	1,208	Less than 1	1,134	Less than 1
Drugs	806	Less than 1	709	Less than 1	420	Less than 1
Fraud / Forgery	213	Less than 1	6	Less than 1	14	Less than 1
Other Notifiable Offences	195	Less than 1	230	Less than 1	263	Less than 1
Robbery	2,285	1.0	1,670	Less than 1	1,005	Less than 1
Sexual Offences	483	Less than 1	513	Less than 1	684	Less than 1
Theft and Handling	9,583	4.1	8,856	3.7	7,737	3.2
Violence against the Person	4,994	2.1	4,893	2.0	5,801	2.4
<b>Total</b>	<b>20,120</b>	<b>8.6*</b>	<b>18,138</b>	<b>7.5*</b>	<b>17,109</b>	<b>7.2*</b>

<sup>3</sup> The crime figures published in this bulletin are based on figures produced by the Metropolitan Police Performance Information Bureau at the end of each financial year. These figures are not updated retrospectively.

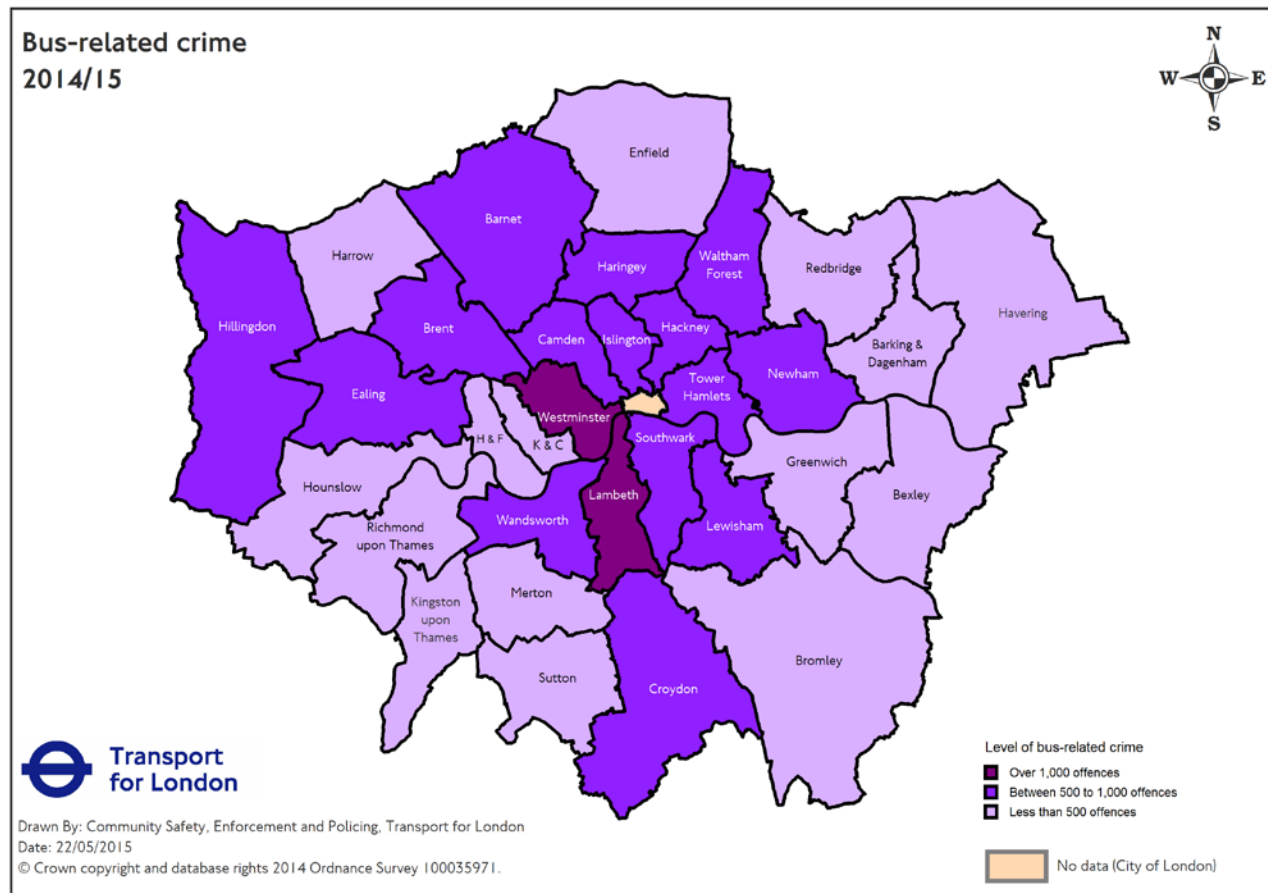
<sup>4</sup> Rate of crime per million passenger journeys is calculated by dividing the number of crimes by the number of passenger journeys multiplied by one million.

<sup>5</sup> Most burglaries take place in buildings and therefore it is not appropriate to calculate crime rates for burglary based on the number of passenger journeys made on the bus network.

\* Bus-related crime rates for, 2012/13, 2013/14 and 2014/15 are based on annual passenger journey figures of 2.335b, 2.405b and 2.385b respectively.

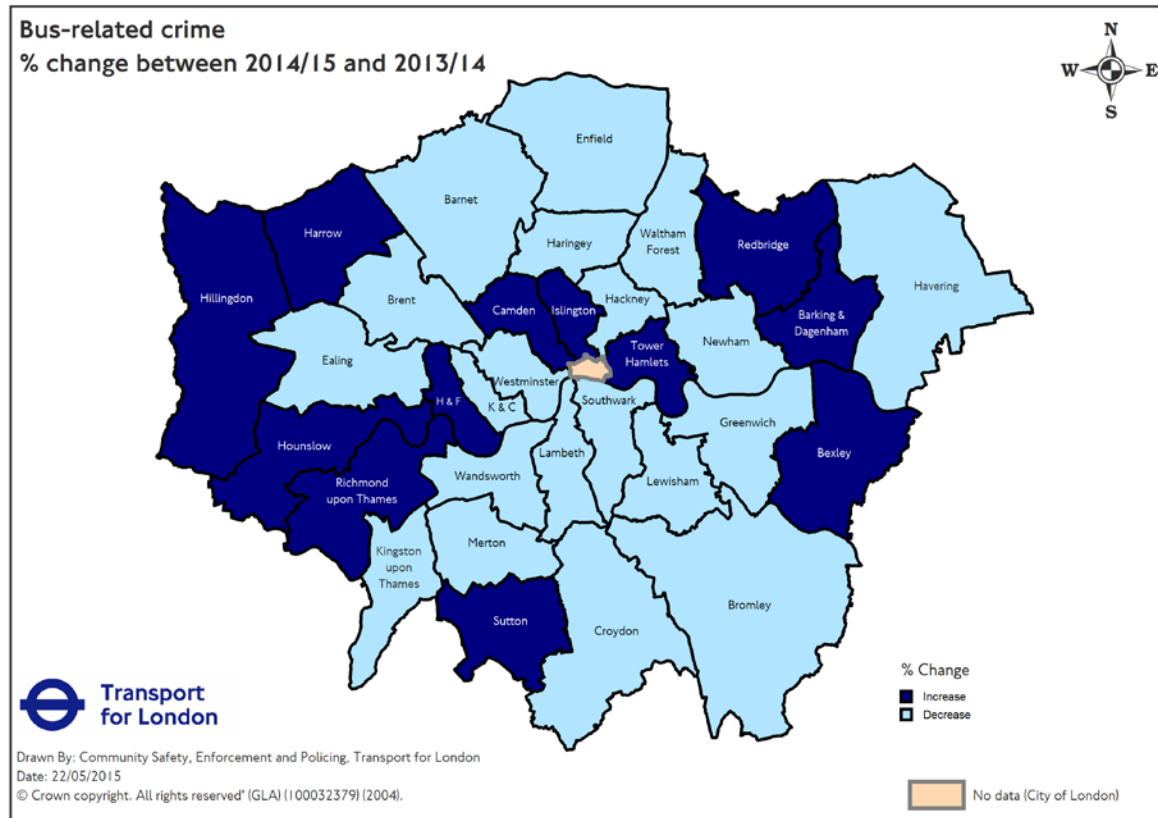
## Map 1 – Bus-related crime volume by borough

Map 1 shows the breakdown of MPS bus-related crime by borough for 2014/15. The darker shades of purple show the boroughs with the highest number of recorded bus-related crimes. The map has not been adjusted for passenger or population numbers. Borough bus-related crime figures are shown in Table 3. Please note that the map below does not include data for the City of London; this is policed by the City of London Police (CoLP) which is a separate police force from the MPS.



## Map 2 – Bus-related crime change between 2013/14 and 2014/15 by borough

Map 2 shows the percentage change in the levels of bus-related crime by borough<sup>6</sup> between 2013/14 and 2014/15. The lighter blue boroughs have seen reductions in crime. The boroughs shaded in the darkest blue have seen an increase in levels of crime. Borough bus-related crime figures are shown in Table 3.



<sup>6</sup> It is not possible to create similar maps of BTP recorded crime. The exact location of crimes upon the rail network is unknown due to some victims identifying the offence at the end of their journey which was undertaken across more than one borough.

**Table 3 – Borough breakdown of bus related crime for 2013/14 – 2014/15**

	Financial Year 2014/15									2013/14 Total	2014/15 Total	% Change
	Burglary	Criminal Damage	Drugs	Fraud or Forgery	Other Notifiable Offences	Robbery	Sexual Offences	Theft and Handling	Violence Against the Person			
Barking & Dagenham	3	27	7	0	2	30	17	139	98	305	323	5.9%
Barnet	2	41	5	1	10	30	20	254	172	565	535	-5.3%
Bexley	2	40	4	0	5	13	8	58	91	204	221	8.3%
Brent	4	37	14	0	6	46	19	279	242	744	647	-13.0%
Bromley	2	46	1	0	5	18	17	116	148	364	353	-3.0%
Camden	1	29	5	0	12	45	25	432	218	737	767	4.1%
Croydon	2	60	6	0	11	32	28	203	234	620	576	-7.1%
Ealing	0	40	10	1	12	31	37	179	242	675	552	-18.2%
Enfield	3	28	3	1	10	27	19	220	138	452	449	-0.7%
Greenwich	0	46	0	1	8	20	26	132	173	447	406	-9.2%
Hackney	2	25	4	0	7	59	28	416	230	831	771	-7.2%
Hammersmith & Fulham	1	20	5	0	8	17	11	222	207	467	491	5.1%
Haringey	3	36	7	6	6	40	30	292	209	655	629	-4.0%
Harrow	2	25	5	0	2	8	13	98	124	256	277	8.2%
Havering	1	33	8	0	4	9	17	89	134	297	295	-0.7%
Hillingdon	0	56	14	0	7	33	19	204	193	429	526	22.6%
Hounslow	0	49	5	0	3	13	33	159	194	417	456	9.4%
Islington	3	36	6	1	14	42	26	594	236	919	958	4.2%
Kensington & Chelsea	1	10	2	0	4	11	6	161	102	304	297	-2.3%
Kingston upon Thames	0	19	6	0	3	3	13	90	69	208	203	-2.4%
Lambeth	1	51	20	1	27	68	34	497	362	1,176	1,061	-9.8%
Lewisham	2	26	3	0	13	43	23	239	236	685	585	-14.6%
Merton	2	22	2	0	3	16	18	115	89	272	267	-1.8%
Newham	1	43	55	0	14	64	27	423	259	929	886	-4.6%

*Continued on next page*



	Burglary	Criminal Damage	Drugs	Fraud or Forgery	Other Notifiable Offences	Robbery	Sexual Offences	Theft and Handling	Violence Against the Person	2013/14 Total	2014/15 Total	% Change
Redbridge	2	21	6	0	3	35	22	173	131	313	393	25.6%
Richmond upon Thames	0	22	1	0	2	8	15	70	94	200	212	6.0%
Southwark	0	49	10	0	19	67	30	395	287	1,218	857	-29.6%
Sutton	0	21	2	0	3	9	8	68	79	176	190	8.0%
Tower Hamlets	3	49	1	1	9	34	10	261	153	508	521	2.6%
Waltham Forest	3	41	28	0	6	41	23	214	174	577	530	-8.1%
Wandsworth	0	25	7	0	8	29	15	242	187	567	513	-9.5%
Westminster	5	61	168	1	17	64	47	703	296	1,621	1,362	-16.0%
<b>2014/15 Total</b>	<b>51</b>	<b>1,134</b>	<b>420</b>	<b>14</b>	<b>263</b>	<b>1,005</b>	<b>684</b>	<b>7,737</b>	<b>5,801</b>	<b>18,138</b>	<b>17,109</b>	<b>-5.7%</b>
<b>2013/14 Total</b>	<b>53</b>	<b>1,208</b>	<b>709</b>	<b>6</b>	<b>230</b>	<b>1,670</b>	<b>513</b>	<b>8,856</b>	<b>4,893</b>			
<b>% Change</b>	<b>-3.8%</b>	<b>-6.1%</b>	<b>-40.8%</b>	<b>133.3%</b>	<b>14.3%</b>	<b>-39.8%</b>	<b>33.3%</b>	<b>-12.6%</b>	<b>18.6%</b>			

### 3. London Underground and Docklands Light Railway Crime 2012/13–2014/15

Table 4 provides a breakdown of the major crime categories<sup>7</sup> used by the BTP for the LU and DLR networks in 2012/13, 2013/14<sup>8</sup> and 2014/15. There were 6.8 crimes for every million passenger journeys made on the LU and DLR networks in 2014/15.

**Table 4**

Crime Type	2012/13		2013/14		2014/15	
	Crimes	Rate	Crimes	Rate	Crimes	Rate
Violence Against the Person	1,897	1.4	2,077	1.5	2,255	1.6
Sexual Offences	327	Less than 1	429	Less than 1	567	Less than 1
Criminal Damage	635	Less than 1	607	Less than 1	572	Less than 1
Line of Route	90	Less than 1	65	Less than 1	70	Less than 1
Theft of Passenger Property	7,282	5.5	5,102	3.7	4,107	2.9
Motor Vehicle/Cycle Offences	401	Less than 1	332	Less than 1	323	Less than 1
Robbery	101	Less than 1	83	Less than 1	75	Less than 1
Theft of Railway Property / Burglary	276	Less than 1	189	Less than 1	203	Less than 1
Serious Public Order	890	Less than 1	883	Less than 1	879	Less than 1
Serious Fraud	208	Less than 1	175	Less than 1	111	Less than 1
Drugs	591	Less than 1	913	Less than 1	367	Less than 1
Other Serious Offences	106	Less than 1	103	Less than 1	70	Less than 1
<b>Total Notifiable Offences</b>	<b>12,804</b>	<b>9.6**</b>	<b>10,958</b>	<b>8.0**</b>	<b>9,599</b>	<b>6.8**</b>

<sup>7</sup> The BTP categorise crime differently to the MPS. The BTP categories reflect the type of crime experienced on the rail network.

<sup>8</sup> The crime figures published in this bulletin are based on figures produced by the British Transport Police at the end of each financial year. These figures are not updated retrospectively.

\*\* BTP LU/DLR crime rates for 2012/13, 2013/14 and 2014/15 are based on annual passenger journey figures of, 1.332b, 1.366b, and 1.415b respectively.

#### 4. London Overground Crime 2012/13 – 2014/15

Table 5 provides a breakdown of the major crime categories used by the BTP for the LO network in 2012/13 2013/14<sup>9</sup> and 2014/15. There were 5.7 crimes for every million passenger journeys made on the LO network in 2014/15.

Table 5

Crime Type	2012/13		2013/14		2014/15	
	Crimes	Rate	Crimes	Rate	Crimes	Rate
Violence Against the Person	191	1.5	193	1.4	218	1.6
Sexual Offences	11	Less than 1	22	Less than 1	45	Less than 1
Criminal Damage	34	Less than 1	39	Less than 1	37	Less than 1
Line of Route	5	Less than 1	3	Less than 1	4	Less than 1
Theft of Passenger Property	240	1.9	232	1.7	187	1.3
Motor Vehicle/Cycle Offences	110	Less than 1	71	Less than 1	83	Less than 1
Robbery	13	Less than 1	11	Less than 1	7	Less than 1
Theft of Railway Property / Burglary	17	Less than 1	16	Less than 1	14	Less than 1
Serious Public Order	116	1.0	122	Less than 1	116	Less than 1
Serious Fraud	7	Less than 1	4	Less than 1	6	Less than 1
Drugs	88	Less than 1	118	Less than 1	78	Less than 1
Other Serious Offences	9	Less than 1	11	Less than 1	6	Less than 1
<b>Total Notifiable Offences<sup>10</sup></b>	<b>841</b>	<b>6.7**</b>	<b>842</b>	<b>6.2**</b>	<b>801</b>	<b>5.7**</b>

<sup>9</sup> The crime figures published in this bulletin are based on figures produced by the British Transport Police at the end of each financial year. These figures are not updated retrospectively.

\*\* BTP LO crime rates for 2012/13, 2013/14 and 2014/15 are based on the annual passenger journey figures of 124.98m, 135.72m and 139.89m respectively.

<sup>10</sup> The LO crime data has been adjusted to account for a change in reporting practice whereby offences recorded at stations managed by other train operating companies but used by LO (e.g. Barking, Watford Junction) have been removed unless they have taken place on the LO services to avoid duplication as these are included in other BTP policing divisions statistics. All data from previous years has been adjusted accordingly.

## 5. London Tramlink Crime 2012/13 – 2014/15

Table 6 provides a breakdown of the major crime categories used by the BTP for the London Tramlink network in 2012/13 2013/14 and 2014/15<sup>11</sup>. There were 8.1 crimes for every million passenger journeys made on the London Tramlink network in 2014/15.

**Table 6**

Crime Type	2012/13		2013/14		2014/15	
	Crimes	Rate	Crimes	Rate	Crimes	Rate
Violence Against the Person	85	2.8	76	2.4	83	2.7
Sexual Offences	10	Less than 1	8	Less than 1	13	Less than 1
Criminal Damage	28	Less than 1	32	1.0	19	Less than 1
Line of Route	27	Less than 1	27	Less than 1	23	Less than 1
Theft of Passenger Property	72	2.4	55	1.8	33	1.1
Motor Vehicle/Cycle Offences	11	Less than 1	13	Less than 1	3	Less than 1
Robbery	29	1.0	24	Less than 1	11	Less than 1
Theft of Railway Property / Burglary	4	Less than 1	4	Less than 1	2	Less than 1
Serious Public Order	36	1.2	37	1.2	37	1.2
Serious Fraud	3	Less than 1	0	N/A	0	N/A
Drugs	54	1.8	40	1.3	22	Less than 1
Other Serious Offences	2	Less than 1	6	Less than 1	3	Less than 1
<b>Total Notifiable Offences</b>	<b>361</b>	<b>12.0**</b>	<b>322</b>	<b>10.3**</b>	<b>249</b>	<b>8.1**</b>

<sup>11</sup> The crime figures published in this bulletin are based on figures produced by the British Transport Police at the end of each financial year. These figures are not updated retrospectively.

\*\* BTP London Tramlink crime rates for 2012/13, 2013/14 and 2014/15 are based on annual passenger journey figures of 30.03m, 31.22m and 30.85m respectively.

## 6. Useful links

Transport for London

- <http://www.tfl.gov.uk>

Metropolitan Police Service - <http://www.met.police.uk>

- Crime figures - <http://www.met.police.uk/crimefigures/index.php>

British Transport Police <http://www.btp.police.uk/>

- Crime figures - <http://www.btp.police.uk/stats/>
- L Area (London Underground / Docklands Light Railway) Division - [http://www.btp.police.uk/about\\_us/our\\_strategy\\_and\\_plans.aspx](http://www.btp.police.uk/about_us/our_strategy_and_plans.aspx)
- London Underground Division Neighbourhood Policing Teams - [http://www.btp.police.uk/local\\_btp\\_teams/london\\_underground.aspx](http://www.btp.police.uk/local_btp_teams/london_underground.aspx)

For more information on this report please contact TfL at [EOScommunications@tfl.gov.uk](mailto:EOScommunications@tfl.gov.uk). For other general TfL enquiries please telephone +44 (0)343 222 1234, textphone: +44 (0)20 7918 3015 or use the relevant contact form of TfL's website <http://www.tfl.gov.uk/contact/default.aspx>