



FERROVIAL AGROMAN
LAING O'ROURKE JV

Northern Line Extension

Core Community Liaison

Group meeting

01 / 02 / 2016

Delivering the Northern line extension with

ferrovial
agroman



MAYOR OF LONDON



TRANSPORT
FOR LONDON



Progress Summary Update

Kennington Sites

Kennington Oct – Jan 2016

- Completion of **utilities** works
- Completion of permanent **hoarding installation** and site entrance
- Continuing secant **piling wall** and construction mat
- Tree pruning (T4)
- Commencement of **piling works**
- Pre-construction **defect surveys** in all Kennington critical areas carried out by CPM Property management surveyors
- On going **monitoring** reception

Kennington Green Oct – Dec 2015



FERROVIAL AGROMAN
LAING O'ROURKE JV



FLO technical operating piling rig



KG shaft overview



Replacement Gingko tree in place



Kennington Park Oct – Dec 2015



New substation at Kennington Park



Overview of cast material for piling



Piling operating at Kennington Park site

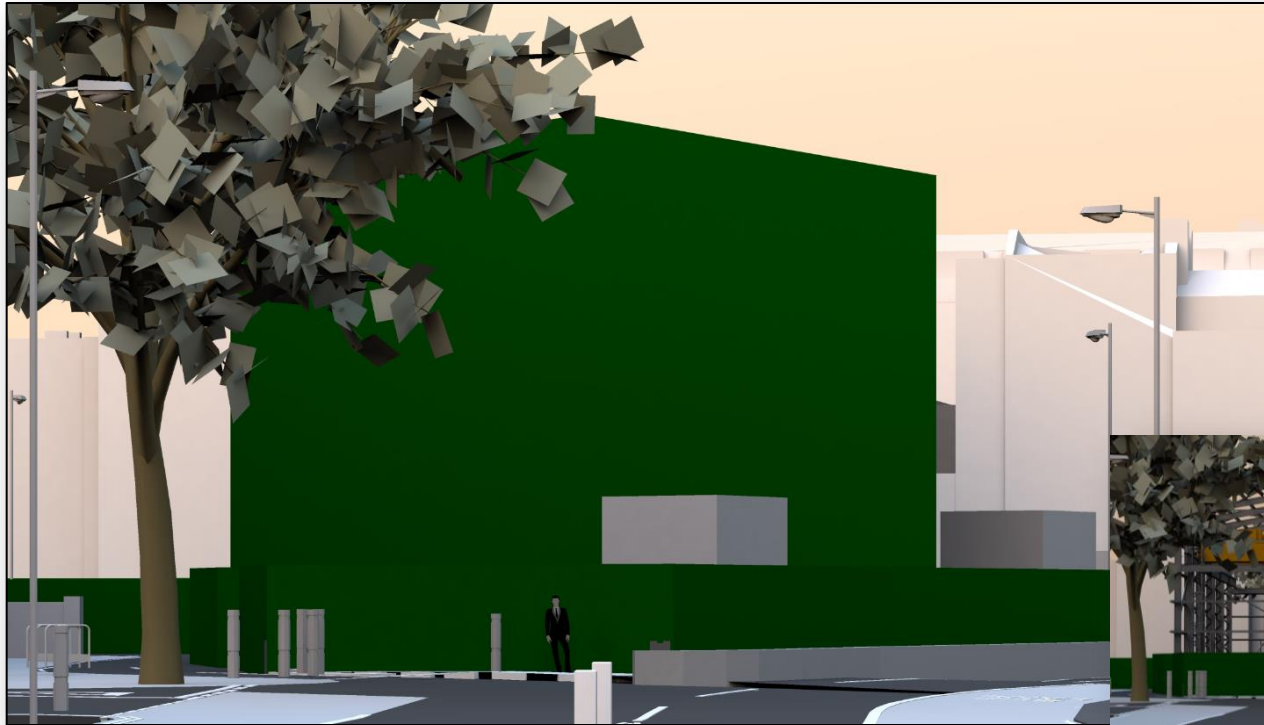
Kennington Look Ahead Jan-Mar 16



- Removal of Tree of Heaven
- Signalised crossing point at Kennington Road
- Pilling works continue and removal of old piles in area
- Landscaping engagement and submission
- Foundations for acoustic enclosures
- Dewatering works around the shafts and basement
- Monitoring and surveying ongoing



Temporary Noise Enclosure KG

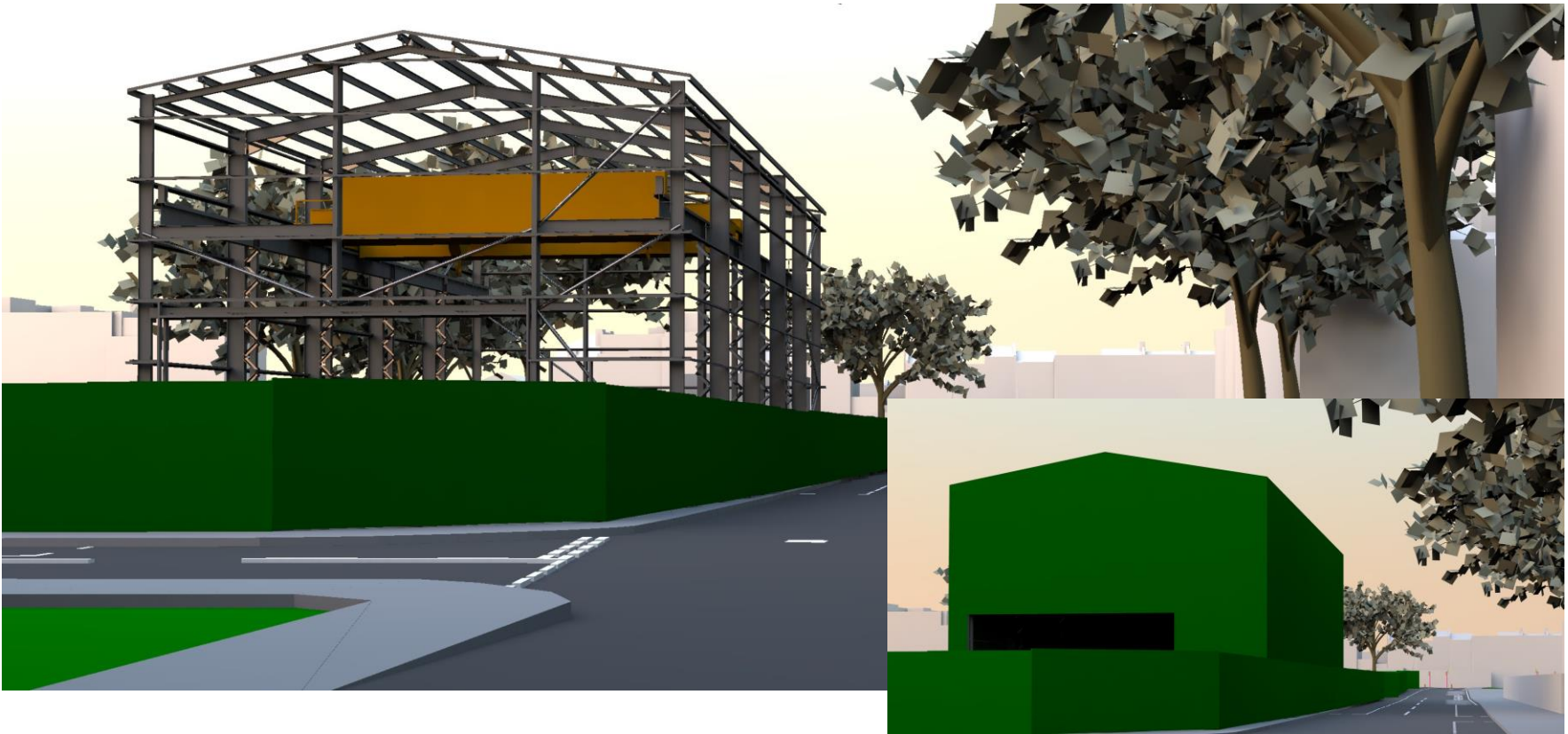


Receptor	Acoustic Enclosure predicted noise attenuation L_{Aeq} (dB)		
	No Enclosure	With Shed Door open (daytime)	With shed door closed (night time)
KG1	71	65	44
KG2	76	66	35
KG3	70	35	33

Temporary Noise Enclosure KP



FERROVIAL AGROMAN
LAING O'ROURKE JV



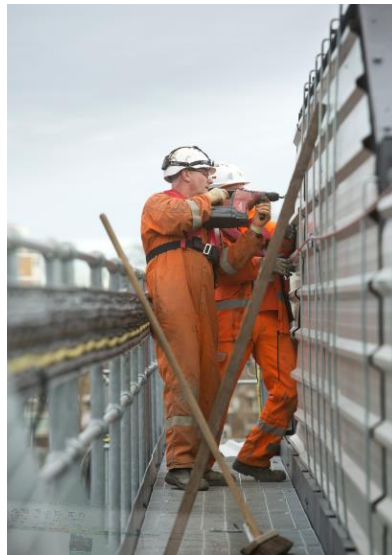
Progress Summary Update

Nine Elms and Battersea sites

Summary Oct - Dec 2015

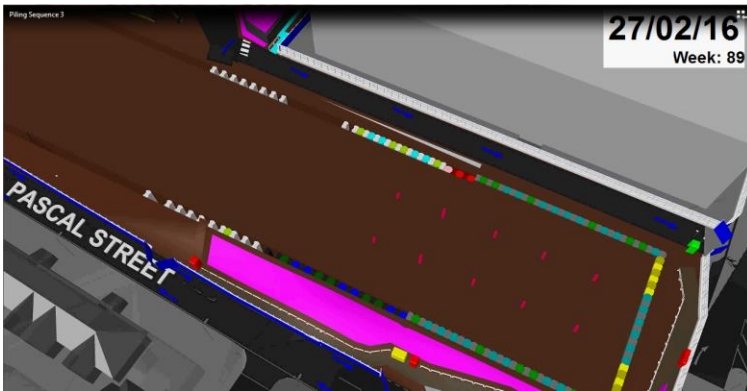
- Continue piling works at both Nine Elms and Battersea
- Utility works on Battersea Park Rd for new Battersea entrance.
- Completion of demolition activities Banhams building at Nine Elms
- Heavy plant arriving on both site
- New office cabins fully operative at both Nine Elms and Battersea
- Battersea Mayoral Visit in November 2015
- On - going pre-construction defect surveys
- On-going monitoring installation

Conveyor and Barge movement



- 13,000 tons of spoil removed by river in 2015 = CO2 reduction 45 tons
- Loading between 0700-1900
- Targets 2016 circa 180,000 tons
- Nine Elms spoil to be transported by river from Feb

Nine Elms and Battersea



Piling sequence illustration at Nine Elms



Overview Battersea site and below operative working on site



Concrete activity ongoing at Nine Elms



Look Ahead Jan - March 2016



FERROVIAL AGROMAN
LAING O'ROURKE JV

- **NINE ELMS**
- Guide wall works on East and West side.
- Steel Plunge column installation
- TfL Relocation of traffic control box
- Install replacement hoarding graphics
- Complete temporary haul road re-location

- **BATTERSEA**
- Completion of D Walling activities Battersea
- Start piling on the crossover box
- Sheet piling at station box
- Utilities diversionary works inside sites
- Barge operations continuing

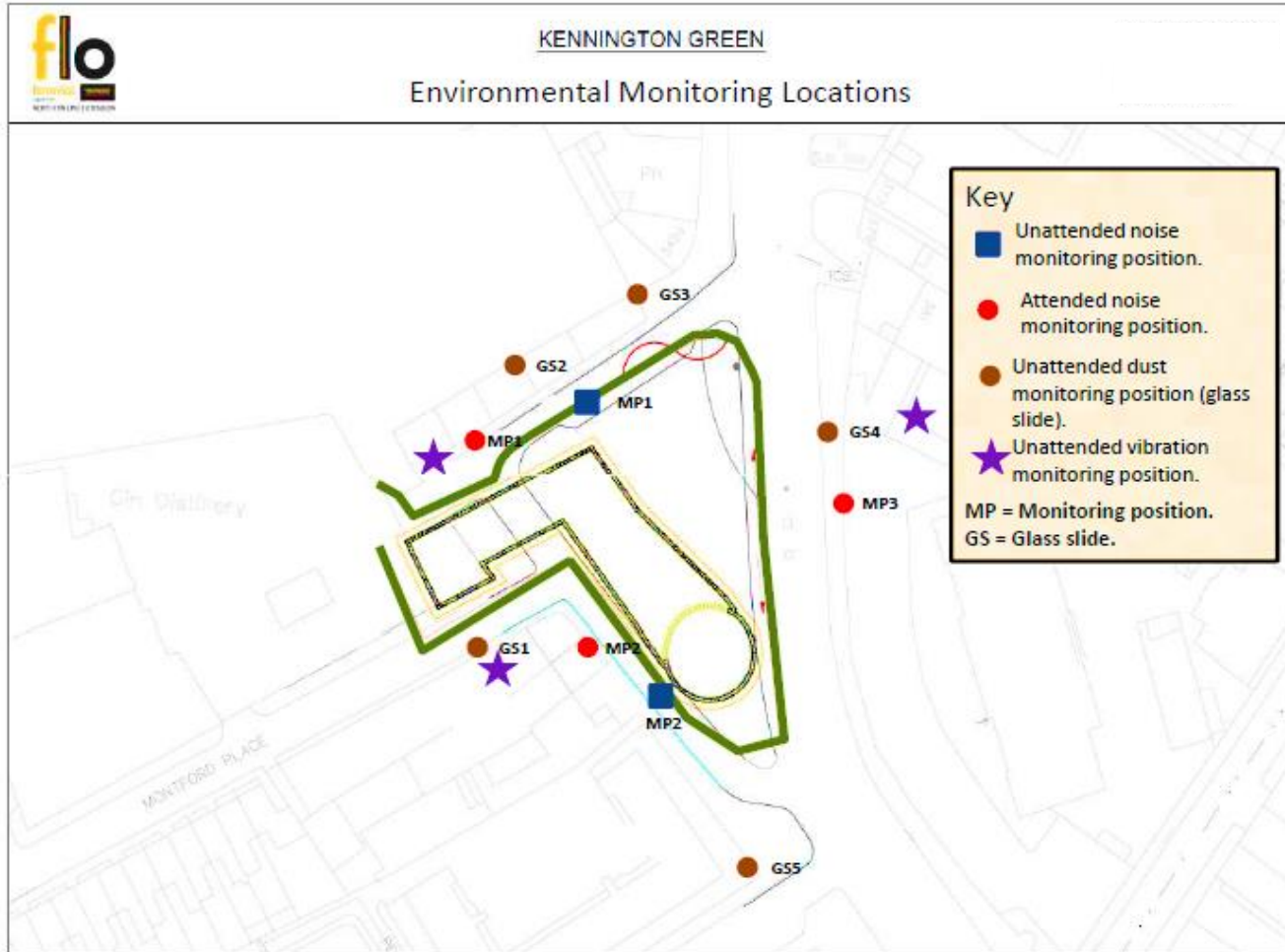


DIAPHRAGM WALL PANEL CONSTRUCTION REV A.rmv

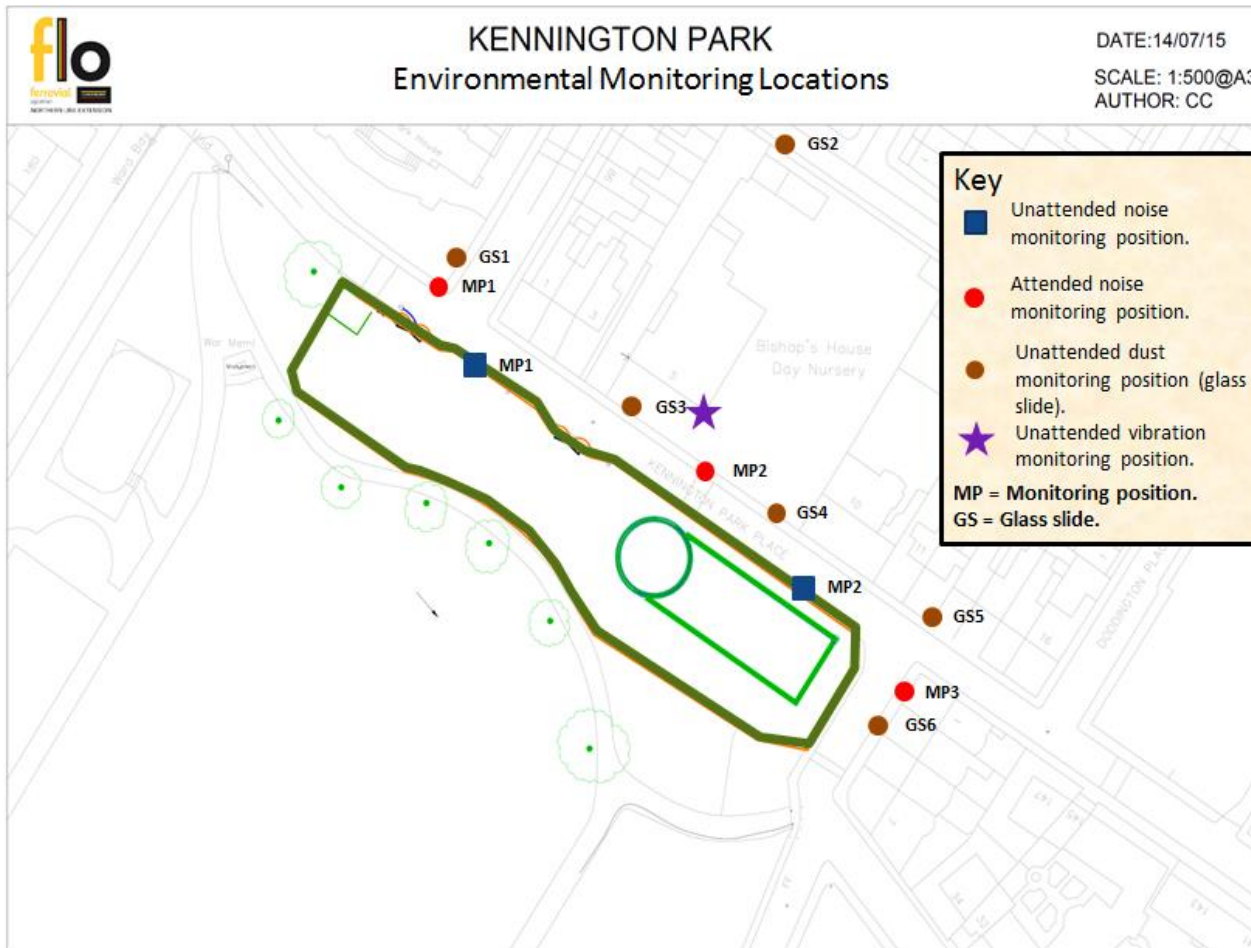


Monitoring

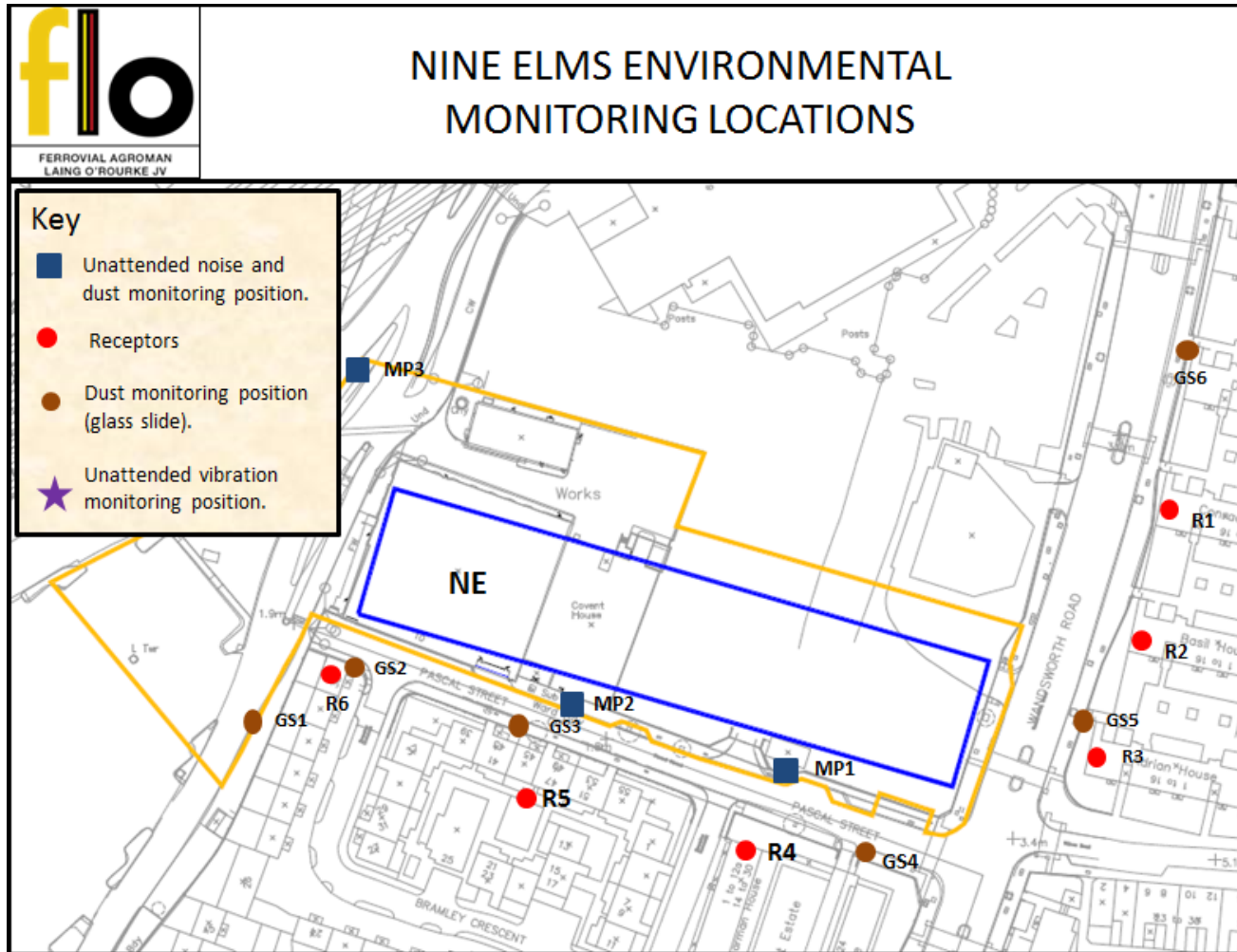
KG Environmental Monitoring



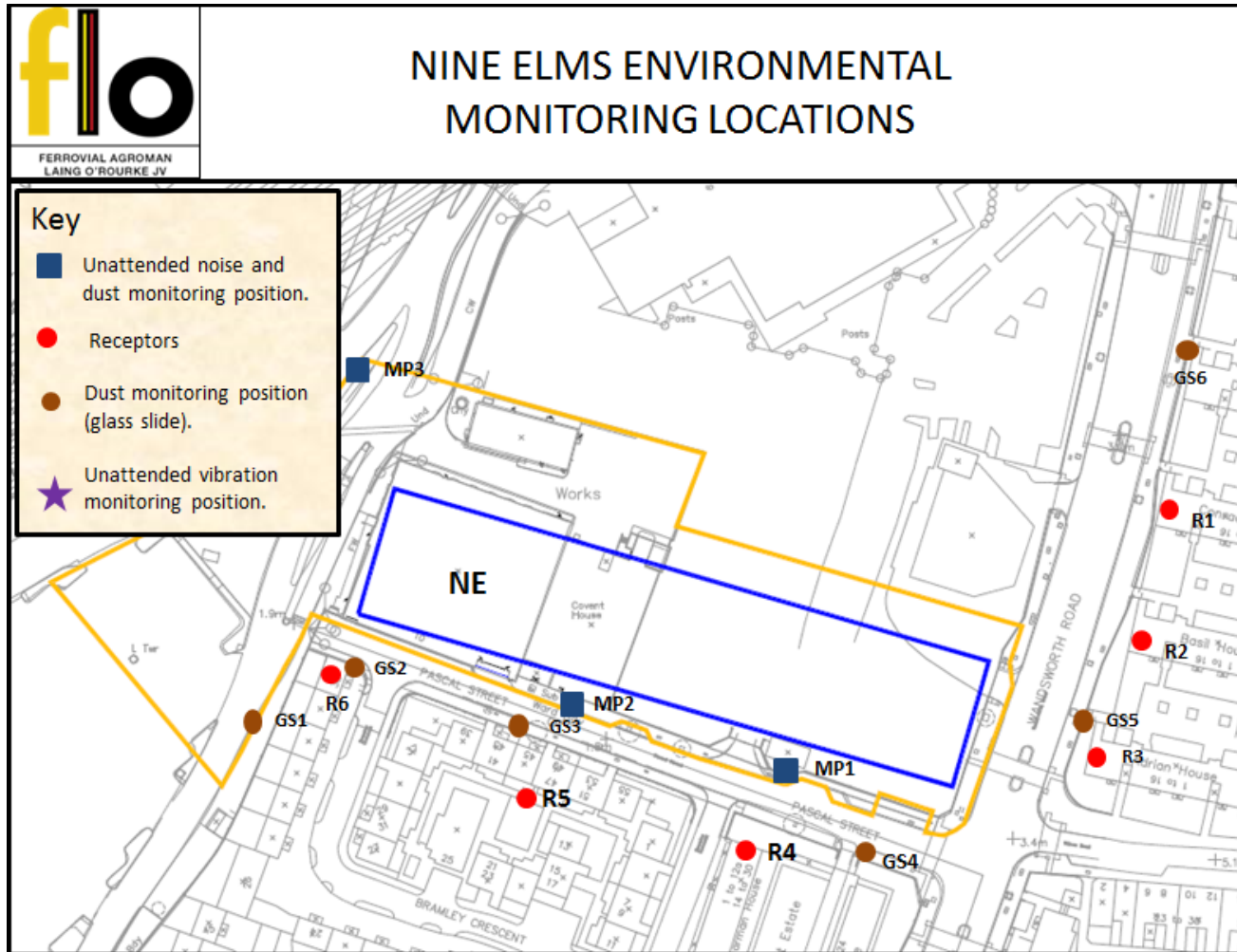
KP Environmental Monitoring



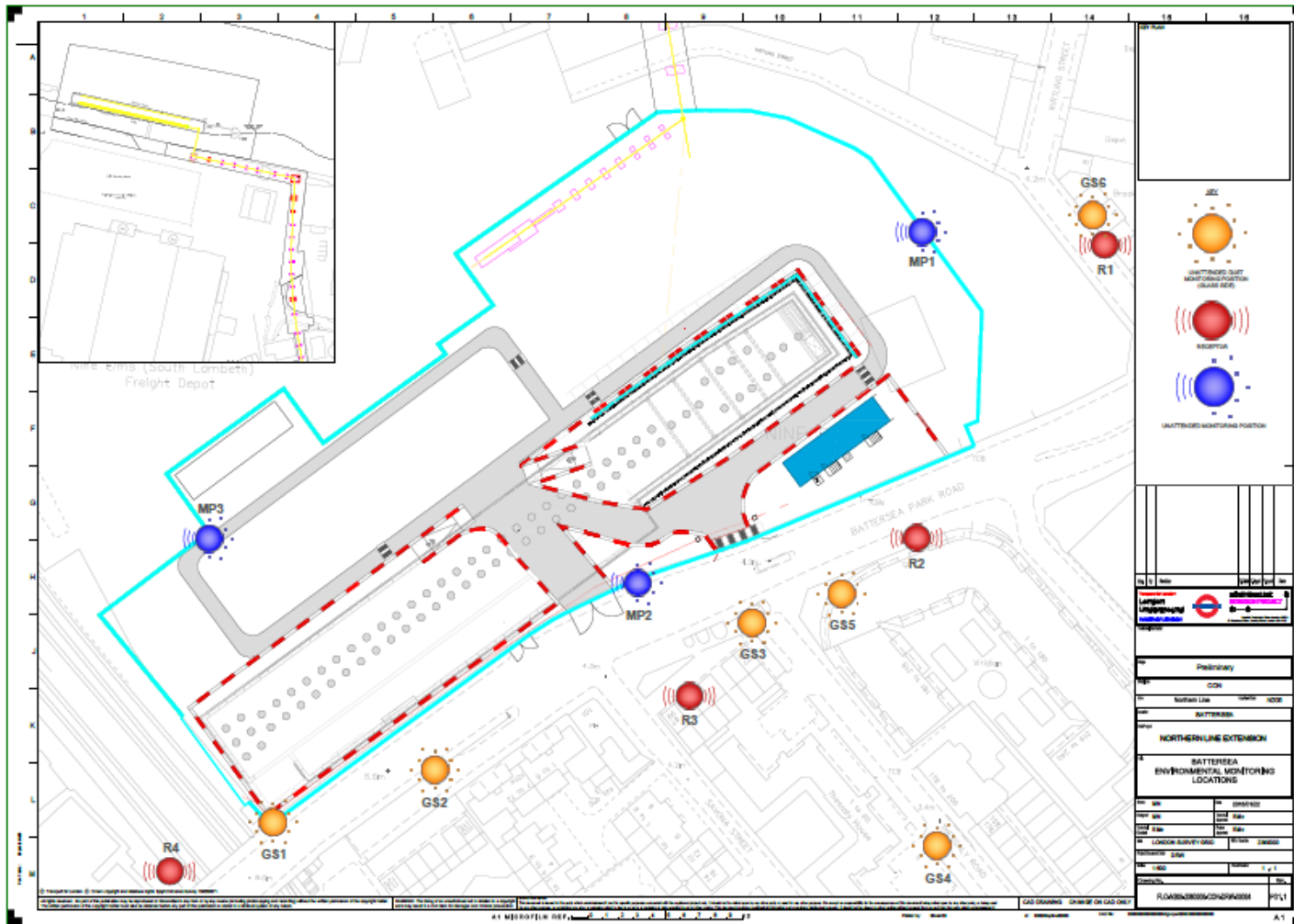
Nine Elms Noise Monitoring Locations



Nine Elms Noise Monitoring Locations



Battersea Noise Monitoring Locations



Traffic Management / Logistics



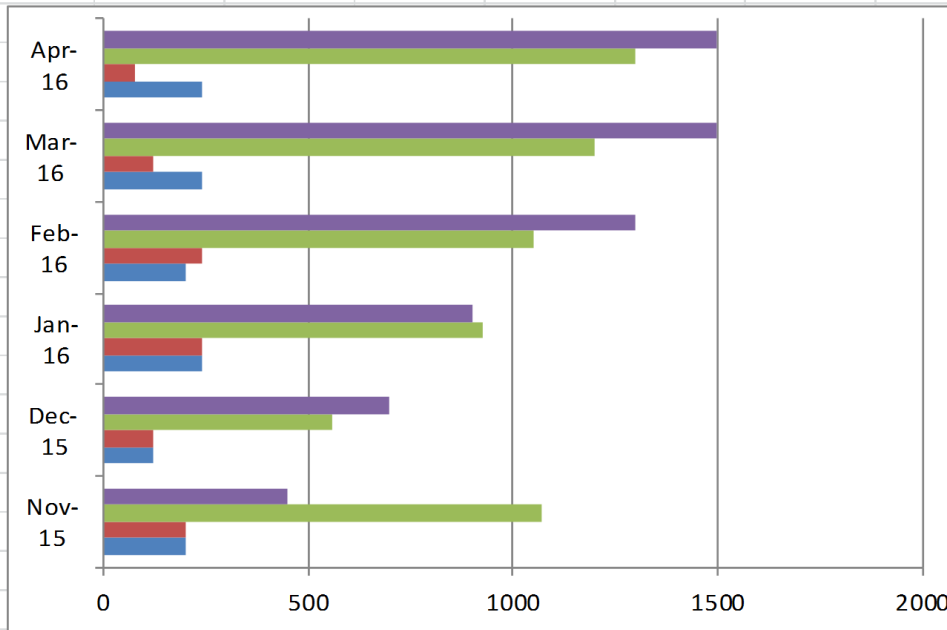
FERROVIAL AGROMAN
LAING O'ROURKE JV

NLE MONTHLY LORRY MOVEMENTS		3 months summary and look ahead			
	K Green	K Park	N Elms	Battersea	
Nov-15	200	200	1073	450	
Dec-15	120	120	558	700	
Jan-16	240	240	926	900	
Feb-16	200	240	1050	1300	
Mar-16	240	120	1200	1500	
Apr-16	240	80	1300	1500	



FERROVIAL AGROMAN
LAING O'ROURKE JV

- Battersea
- N Elms
- K Park
- K Green



Battersea Power Station design

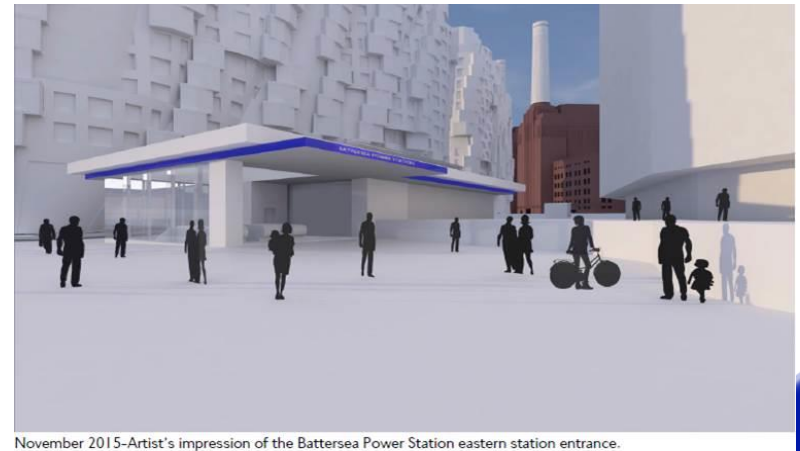
There has been further design work since the NLE Transport and Works Act Order (TWAO) was awarded in November 2014. These enhancements include separating the station entrance to provide a western and an eastern entrance at ground level.

A small section of the eastern entrance at Battersea Power Station falls outside the area consented for development by the NLE TWAO.

We have submitted an outline planning application to LB Wandsworth and are expecting determination in March 2016.

We will be holding a public exhibition at our Battersea worksite:

- **Saturday 6 February 2016 10.00-14.00**
- **Tuesday 9 February 2016 16.00-19.00**



November 2015-Artist's impression of the Battersea Power Station eastern station entrance.

Your Feedback



You Suggested	We Did
Access control through Pascal St on Sunday for Market	Gate have been reinstated to manage access
More diligence and coordination for Traffic Management Issues	Open meetings between TfL surface, authorities, NLE and community
Opportunities for local businesses	LEAP group is progressing. Site canteen at Nine Elms and Battersea run by local business
Concerns regarding the delivery of information to vicinity	We have reviewed and updated contact list
Engagement Meetings	Drop-In sessions at Montford Place on 24 Sept and 21 December 2015 Residents visit to Battersea site 26 Jan 2016
Integrated meetings with major developments	NLE and Tideway are joining their CLG meetings. BPSDC on same date every 6 months
Collaboration requested for WE landscaping scheme Lights causing light pollution.	FLO is looking at co-funding the project CRR replied and arranged for lights to be switched off when not required / investigating options



NLE Community Engagement

- Community Liaison Groups
- Drop-In sessions
- Site Visits
- Cycle safety Events
- Community Investment



NLE Skills and Employment

- 296 + days of placements
- 4 local workless job starts to date
- 2 further job offers went out last weeks
- 1 to Wandsworth resident / 2nd from wider



Student Jennifer Torres and FLO Team

TFL brokerage

- 2 candidates interviewed with Expanded last week, awaiting final feedback
- 26 STEM trained ambassadors
- St Francis Xavier Sixth Form College student completed a 8 day work experience



Interviewing event at Barking & Dagenham College

Ways to contact us

- It is important that calls are logged through the NLE 24/7 helpdesk on 0343 222 2424
- Email nle@tfl.gov.uk
- Regular Drop In sessions
- Please visit:

<https://tfl.gov.uk/northern-line-extension>