

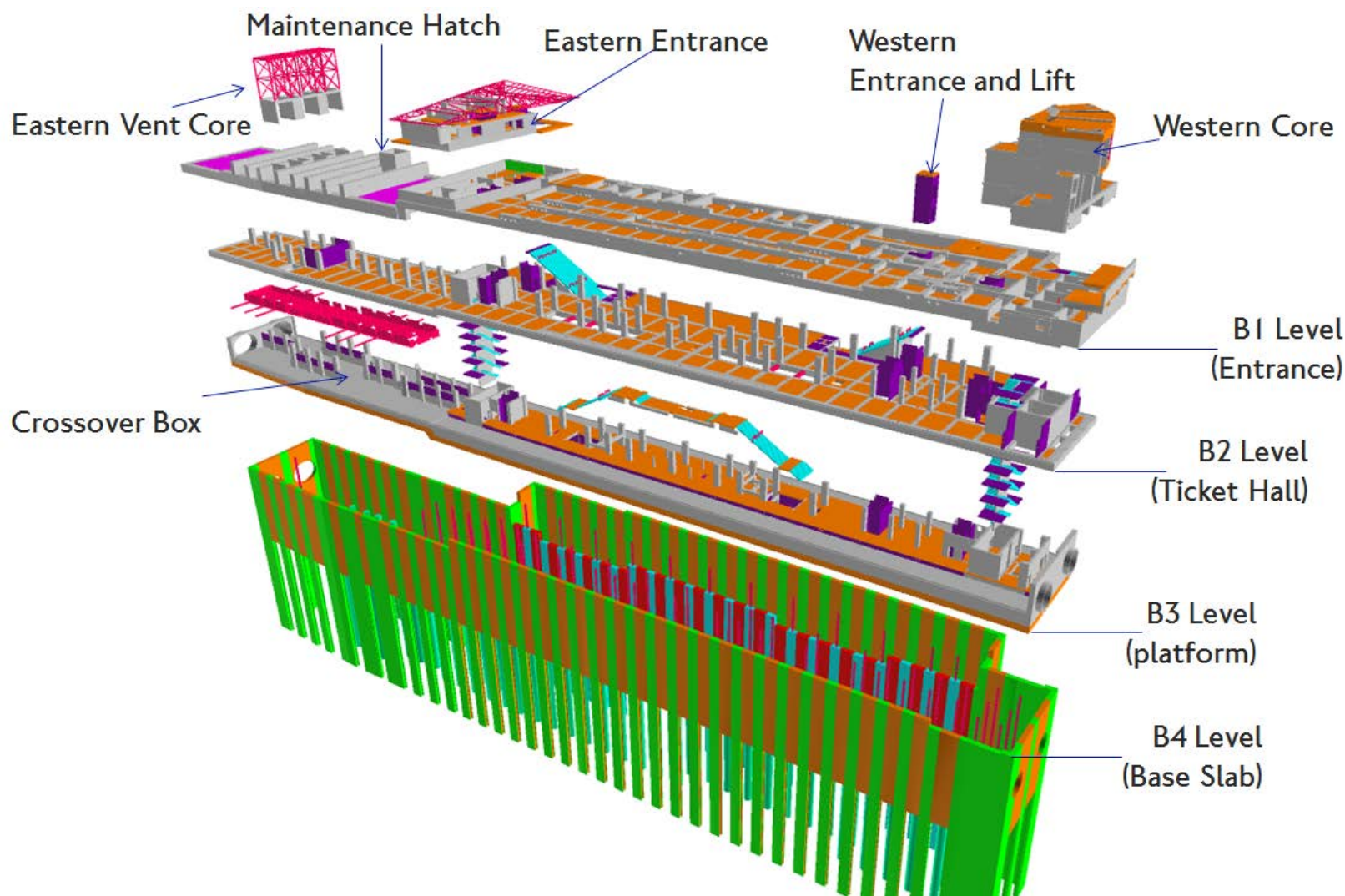
Northern Line Extension

Battersea

Community Liaison Group

21 November 2019

#	Action	Update
1	Ensure historical CLG minutes and presentations are uploaded to the TfL website	This action is in progress and the target is to get website up to date by early December
2	PM10 and PM2.5 dust levels for the Battersea site	Update in today's presentation
3	Number of vehicle movements relating to the NLE project since the start of construction in 2015	Update in today's presentation
4	Whether TfL would monitor the air quality at Battersea and other Underground stations, once the service is operational	Regular independent monitoring shows that the levels and content of dust in LU's infrastructure are within Health & Safety Executive limits (HSE). Monitoring shows that dust levels are well below the HSE workplace exposure limits for general dust (4 mg/m ³). We also aim to achieve the stricter requirements of the Institute of Occupational Medicine to limit exposures to respirable dust to below 1mg/m ³ , and meet this target at the majority of locations
5	Dates for the next few Battersea CLG meetings - circulate to the CLG	These have been held January; April; July; October Is this the right frequency? Should we make them every four months instead?
6	Loitering outside Sainsbury's - raised at the site's regular 'Toolbox' meetings	Regular reminders are provided to the NLE team on maintaining the highest behavioural standards. We expect our team to uphold these high standards and to act as ambassadors for FLO, TfL and the construction industry generally
7	Send May H a copy of the presentation	Could not see whether this action was completed so copy sent today. Apologies for the delay (if this was not actioned)



Battersea Power Station: Progress Update

November 2019



FERROVIAL AGROMAN
LAING O'ROURKE JV



Submains cable pulling commenced at Battersea. These are the first submain cables for Milestone A installed between the ground floor meter room and basement 2 main switchboard



Battersea Power Station: Progress Update

November 2019



FERROVIAL AGROMAN
LAING O'ROURKE JV

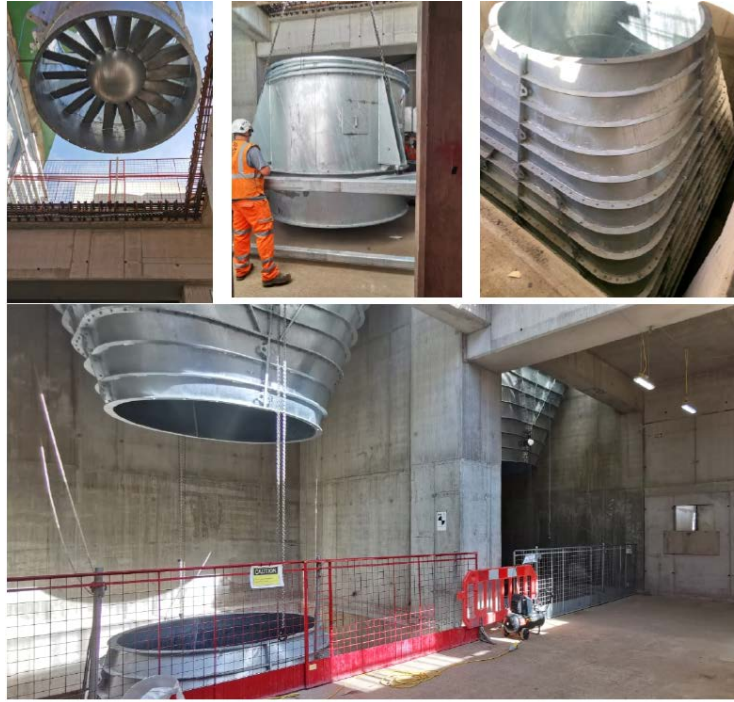


Transformer rectifier delivered to Battersea. This will supply the DC switchboard power, which in turn supplies the traction power to the conductor rails



Battersea Power Station: Progress Update

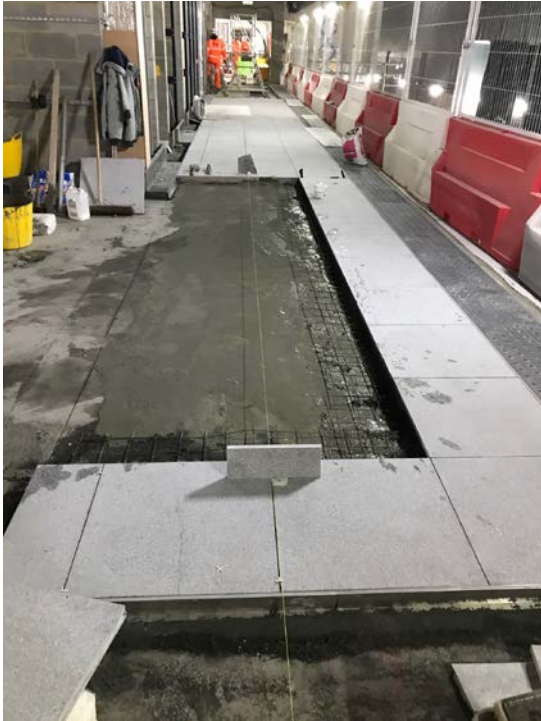
November 2019



**Major Milestone Achieved early November with the handover of the Western Ramp land to Battersea Developers.
Within the Western Ramp Structure Fans and large ductwork installed.**

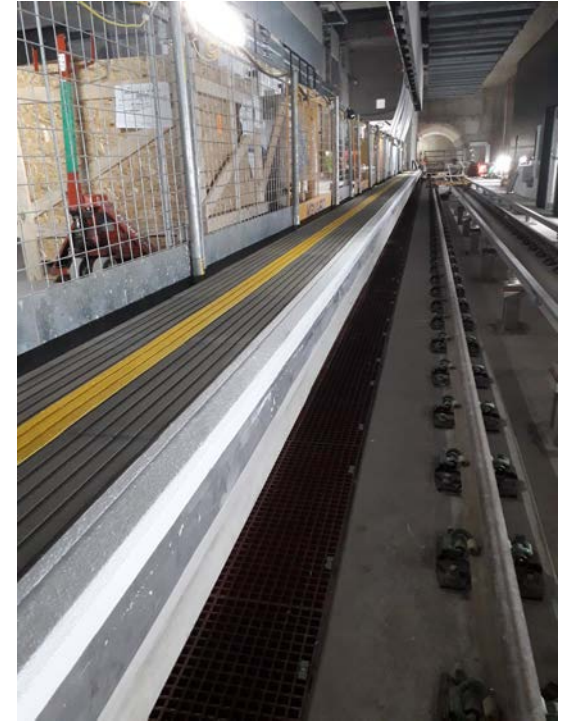
Battersea Power Station: Progress Update

November 2019



Internally

- Finishes and Platforms starting to take shape.
- Ongoing cladding/finishes, station system and railway systems fit out



Battersea Power Station: Progress Update

November 2019



CONSIDERATE CONSTRUCTORS

Certificate of Excellence

Presented to
Ignacio Chicharro
or
Ferrovial Agroman Laing O'Rourke (FLO) Joint Venture

For
NLE - Battersea Station

When visited by the Considerate Constructors Scheme's Monitor, this site achieved a level of excellence by scoring at least 8 points in each of the following five sections of the Scheme's Code of Considerate Practice:

- Care about Appearance
- Respect the Community
- Protect the Environment
- Secure everyone's Safety
- Value their Workforce

Isabel Martinson MBE
Executive Chairman, Considerate Constructors Scheme

Issue Date: 17 October 2019 Site ID: 113685

Improving the image of construction

NLE & Proud to Be

Celebrating the achievement of 2 million RIDDOR free hours with a hog roast for all!



**Battersea Recognised by The Considerate Constructors Scheme as Excellent .
The Team have achieved over 2million man hrs without a reportable injury.**

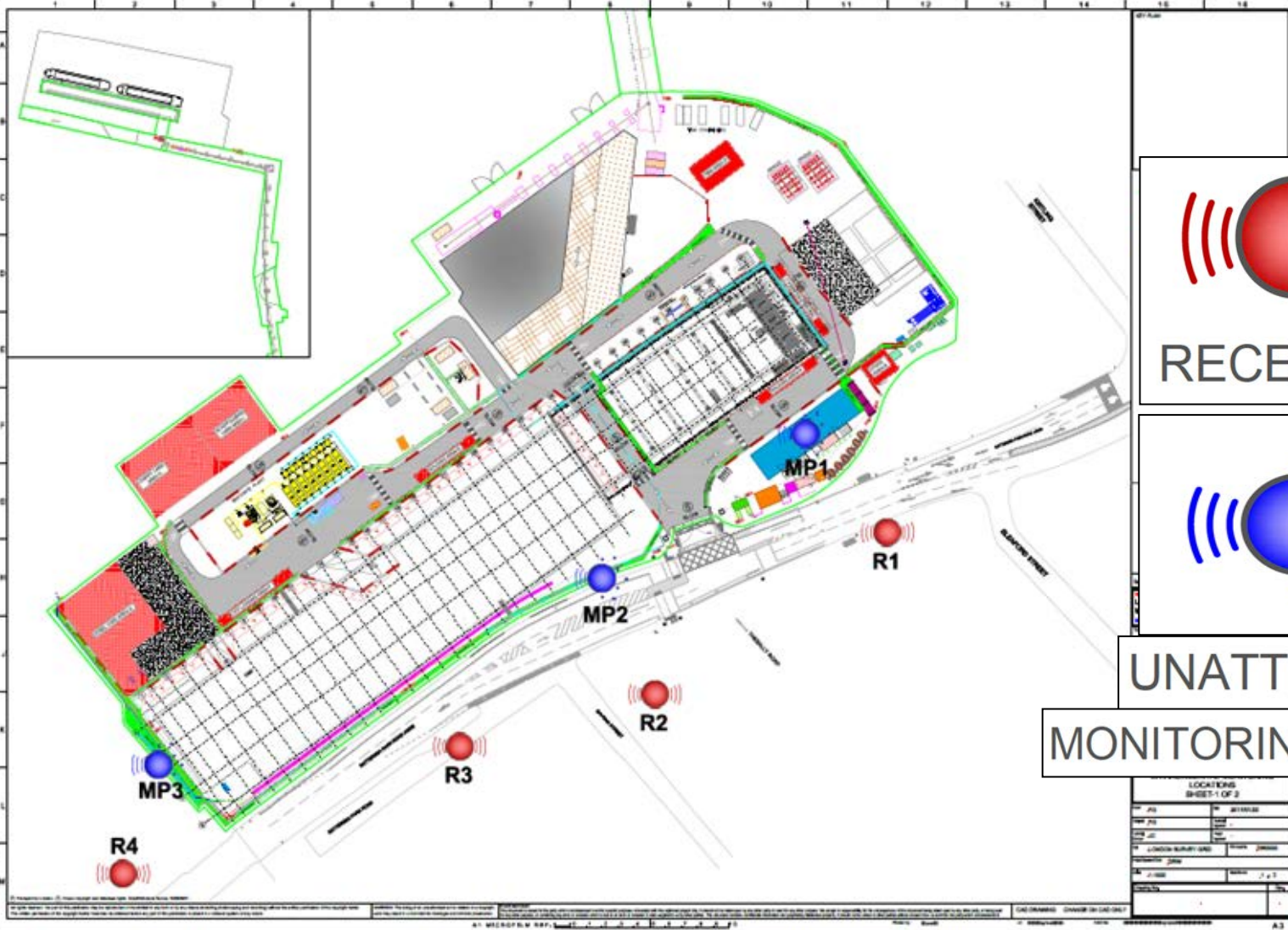


Environmental Monitoring Locations


Noise Monitoring stations and sensitive receptors



FERROVIAL AGROMAN
LAING O'ROURKE JV



RECEPTOR



UNATTENDED
MONITORING POSITION

UNATTENDED
MONITORING POSITION

LOCATIONS	
SHEET 1 OF 2	
NO.	ADDRESS
MP1	
MP2	
MP3	
MP4	
R1	
R2	
R3	
R4	

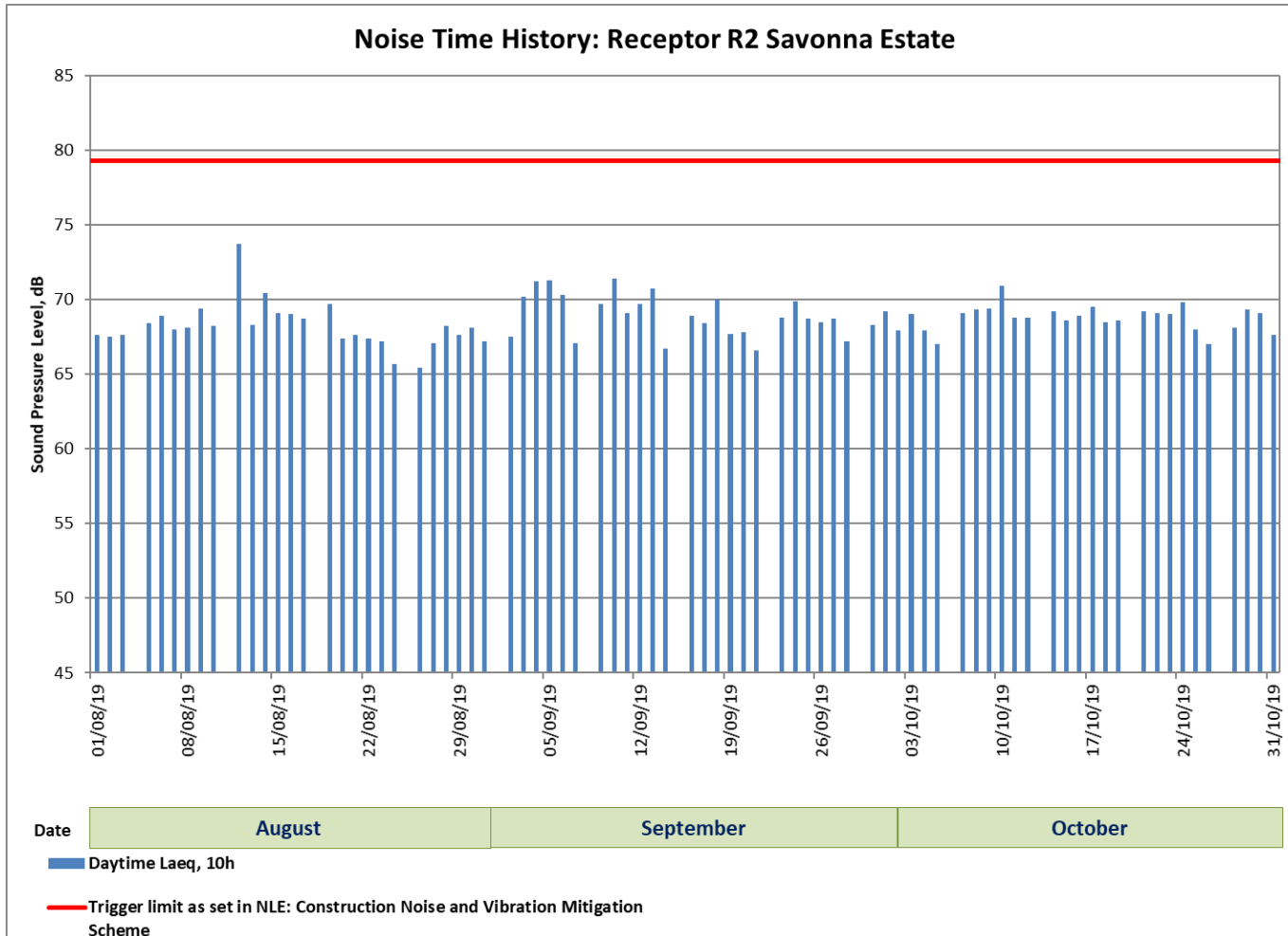


BT Monitoring

Noise monitoring

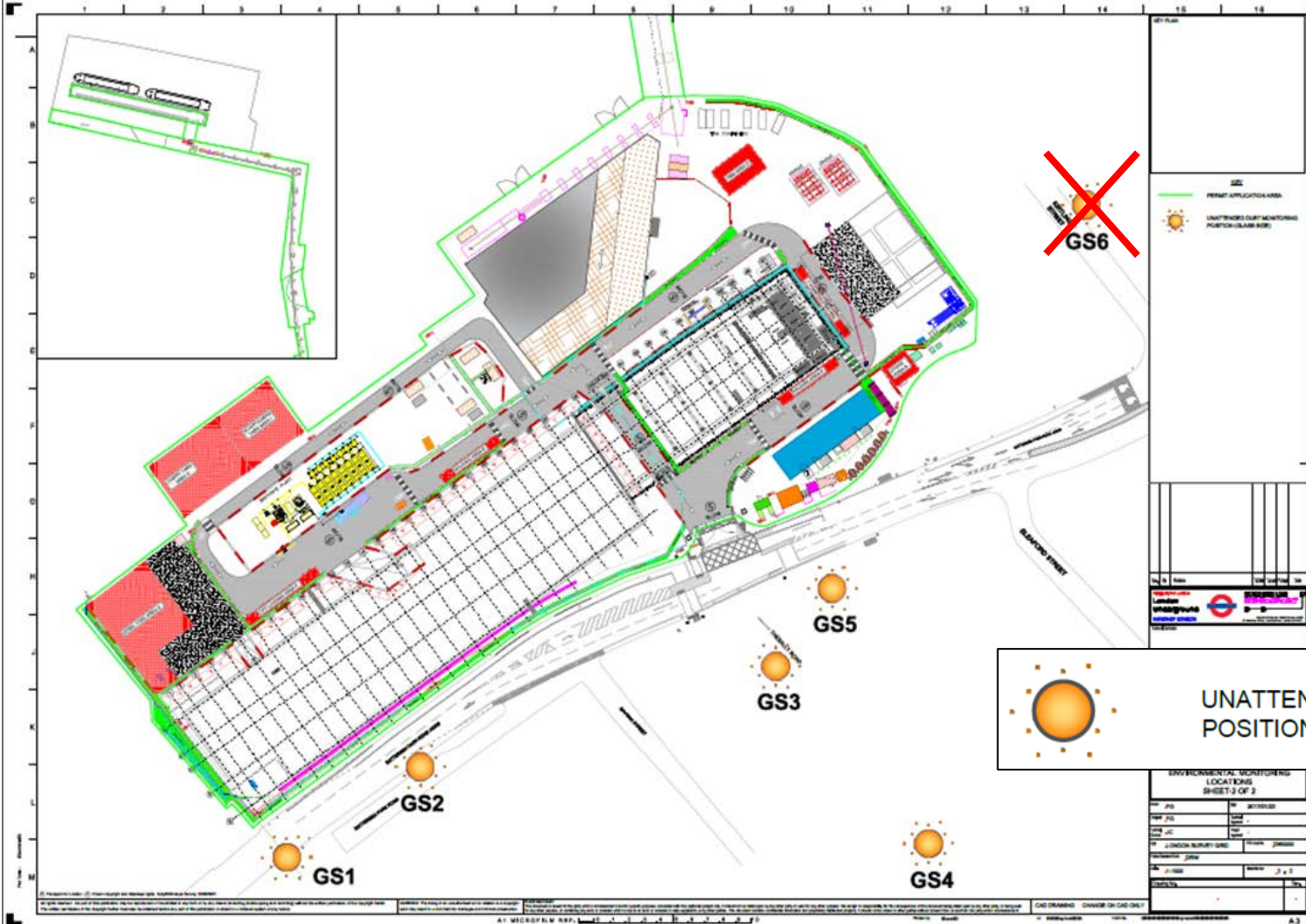


FERROVIAL AGROMAN
LAING O'ROURKE JV



Environmental Monitoring Locations

Glass slide locations

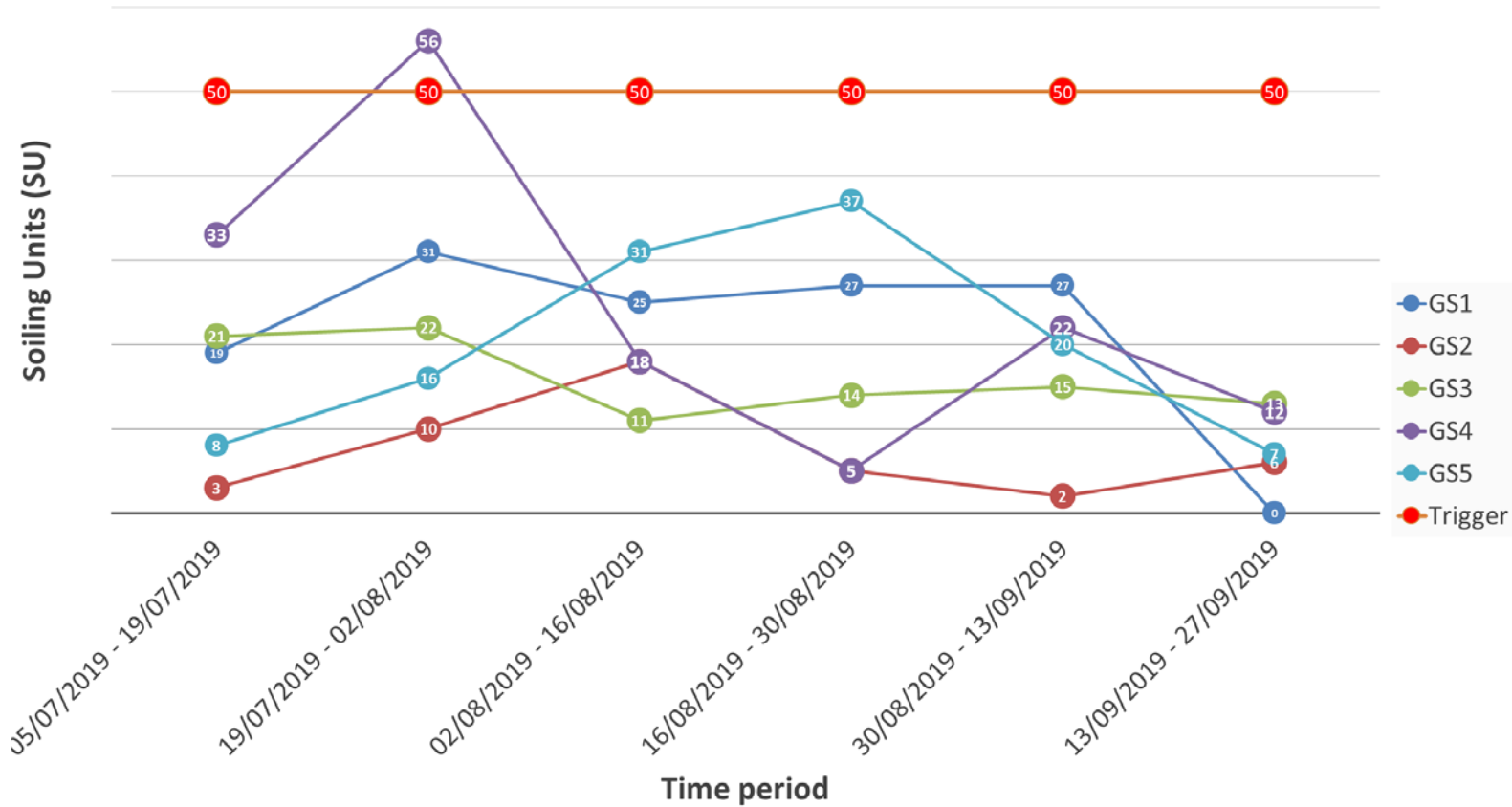


 UNATTENDED DUST MONITORING POSITION (GLASS SIDE)

BT Monitoring

Dust slides results

NLE - Battersea- Fortnightly Passive AQ monitoring

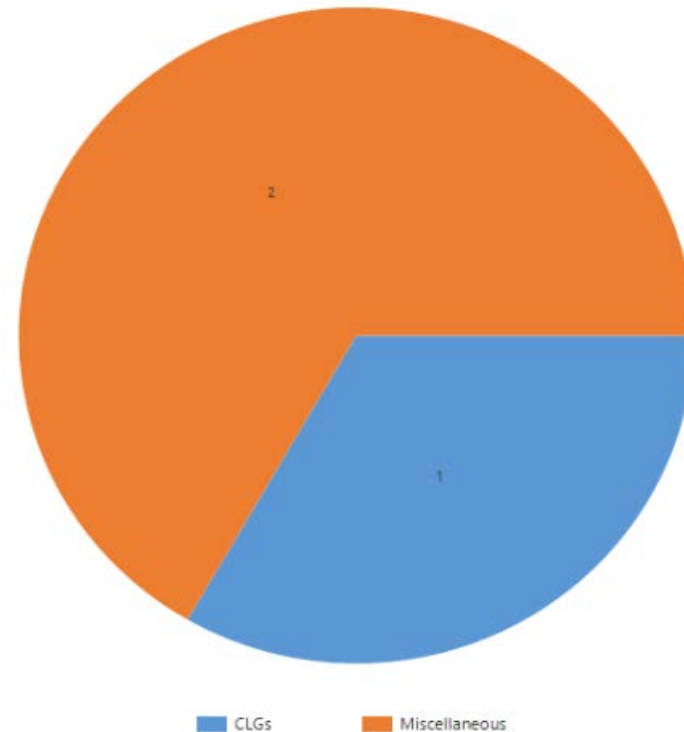


Complaints & Enquiries Summary

Stats for Battersea between 16 July and 21 November 2019

Case Status: 3 cases

- Active: 0 (0%)
- Resolved: 3 (100%)



Community Engagement and NLE Skills and Employment



Look ahead : we will be supporting a business breakfast event at Sacred Heart

3 students completed **work experience** on the project from Southwark- 2 from Sacred Heart 1 from St Thomas the Apostle
4 **site tours** – 2 from St Thomas 2 from Sacred Heart
1 meet the **professional event** at the Southwark Construction Centre
1 Dragons den activity – Landsdowne school (Lambeth)



Ways to contact us

- It is important that calls are logged through the NLE 24/7 helpdesk on 0343 222 2424 (Option 1)
- Email nle@tfl.gov.uk
- Drop In sessions
- Please visit:

<https://tfl.gov.uk/northern-line-extension>