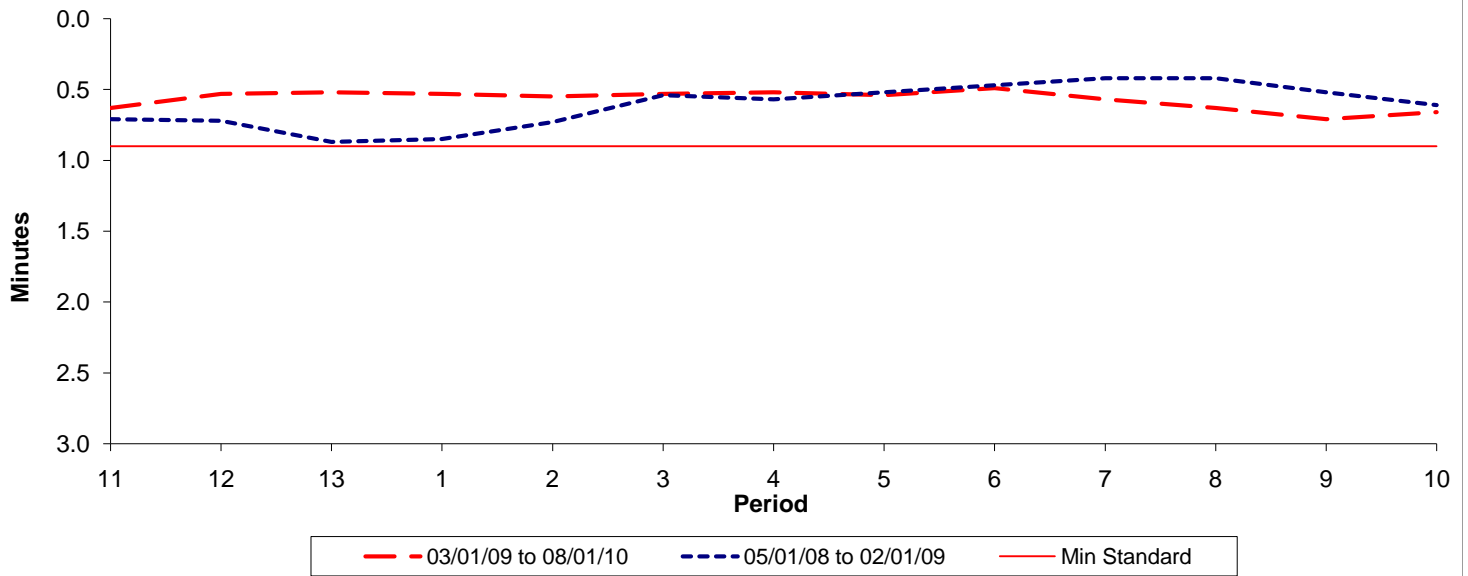




**Reliability Performance ( High Frequency )**

Excess Waiting Time (minutes)

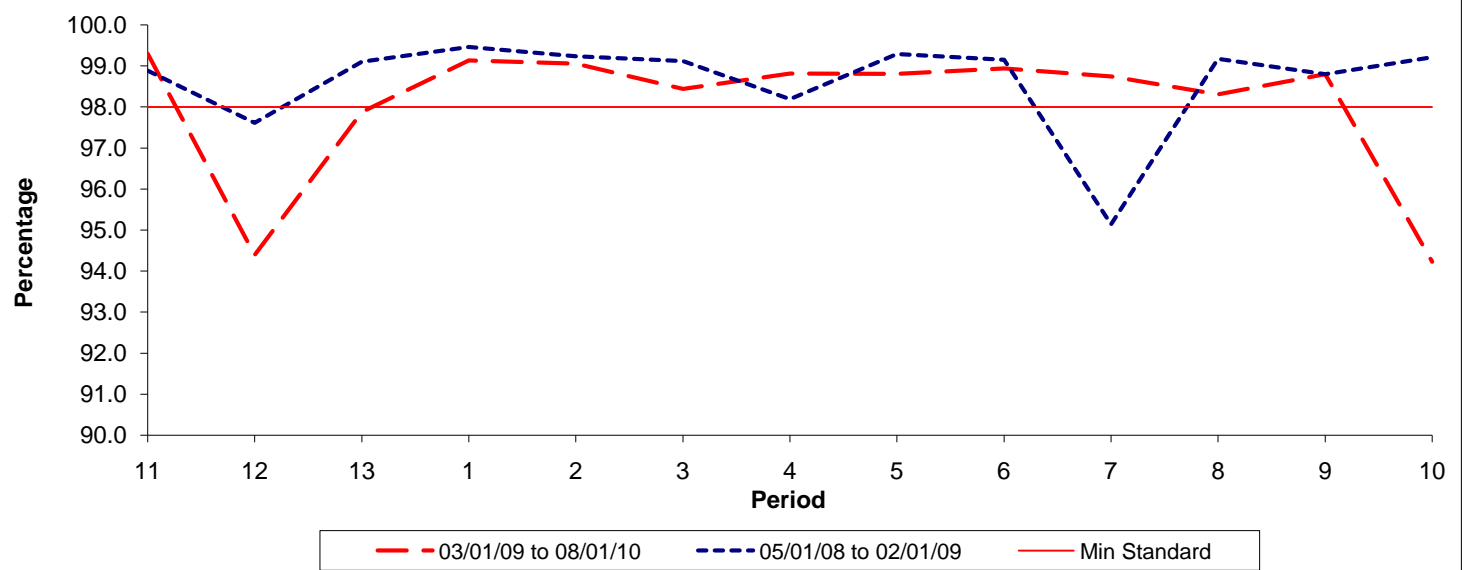


Date Range / Period	11	12	13	1	2	3	4	5	6	7	8	9	10
03/01/09 to 08/01/10	0.63	0.53	0.52	0.53	0.55	0.53	0.52	0.54	0.49	0.57	0.63	0.71	0.66
05/01/08 to 02/01/09	0.71	0.72	0.87	0.85	0.73	0.54	0.57	0.52	0.47	0.42	0.42	0.52	0.61
Min Standard	0.90	0.90	0.90	0.90	0.90	0.90	0.90	0.90	0.90	0.90	0.90	0.90	0.90

Excess Waiting Time figures are based on 12 weeks data

**Kilometre Performance**

% Kilometres Operated



Date Range / Period	11	12	13	1	2	3	4	5	6	7	8	9	10
03/01/09 to 08/01/10	99.30	94.39	97.88	99.14	99.06	98.44	98.82	98.81	98.94	98.75	98.31	98.80	94.23
05/01/08 to 02/01/09	98.88	97.61	99.10	99.46	99.23	99.12	98.19	99.29	99.15	95.14	99.17	98.80	99.21
Min Standard	98.00	98.00	98.00	98.00	98.00	98.00	98.00	98.00	98.00	98.00	98.00	98.00	98.00

Kilometre figures are based on 4 weeks data