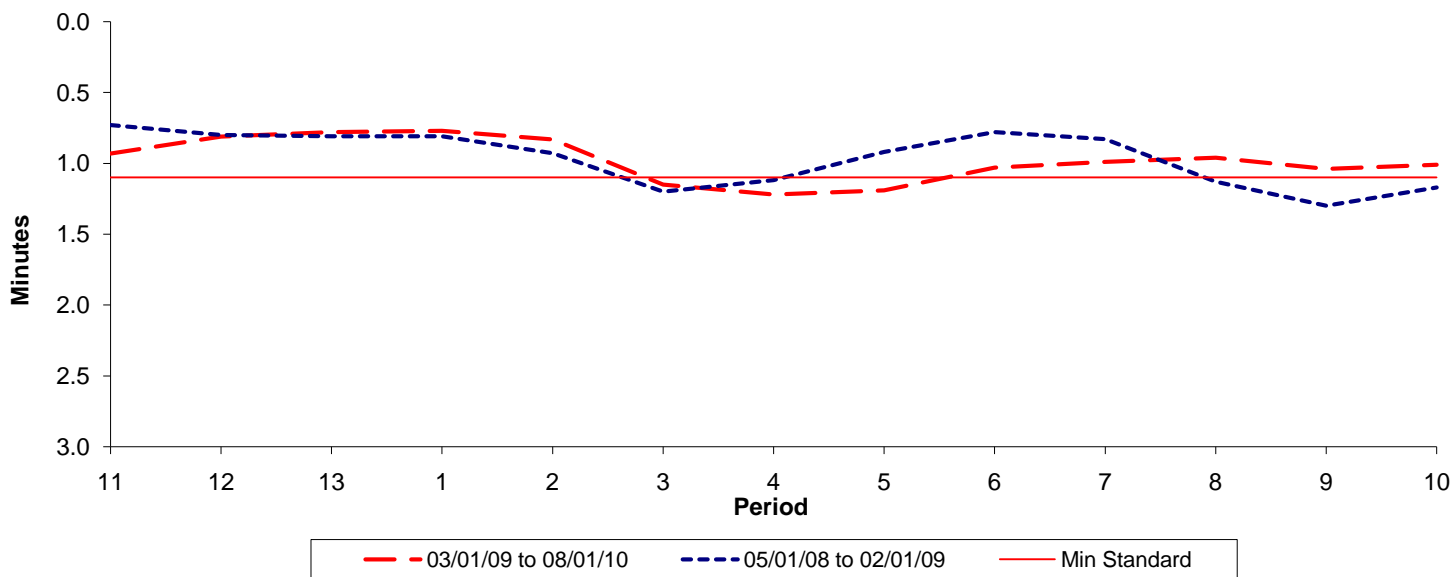




Reliability Performance (High Frequency)

Excess Waiting Time (minutes)

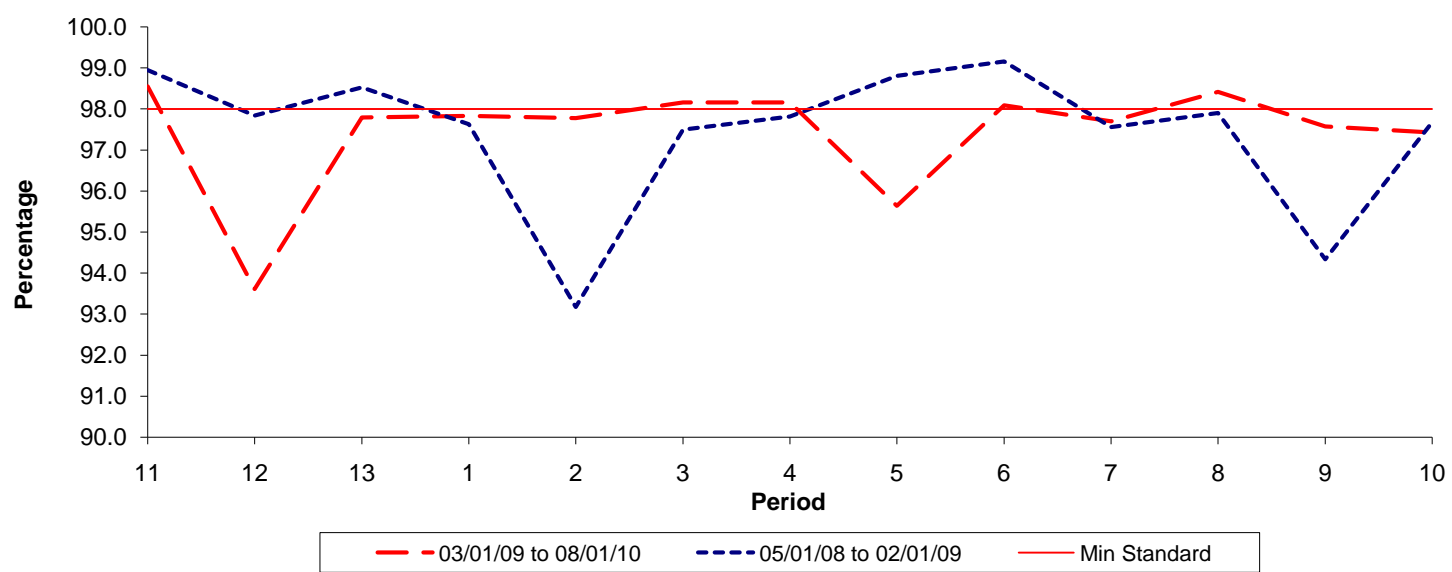


Date Range / Period	11	12	13	1	2	3	4	5	6	7	8	9	10
03/01/09 to 08/01/10	0.93	0.81	0.78	0.77	0.83	1.15	1.22	1.19	1.03	0.99	0.96	1.04	1.01
05/01/08 to 02/01/09	0.73	0.80	0.81	0.81	0.93	1.20	1.12	0.92	0.78	0.83	1.13	1.30	1.17
Min Standard	1.10	1.10	1.10	1.10	1.10	1.10	1.10	1.10	1.10	1.10	1.10	1.10	1.10

Excess Waiting Time figures are based on 12 weeks data

Kilometre Performance

% Kilometres Operated



Date Range / Period	11	12	13	1	2	3	4	5	6	7	8	9	10
03/01/09 to 08/01/10	98.55	93.61	97.79	97.83	97.78	98.16	98.16	95.64	98.09	97.70	98.42	97.58	97.43
05/01/08 to 02/01/09	98.95	97.84	98.53	97.63	93.17	97.50	97.82	98.81	99.16	97.56	97.90	94.33	97.68
Min Standard	98.00	98.00	98.00	98.00	98.00	98.00	98.00	98.00	98.00	98.00	98.00	98.00	98.00

Kilometre figures are based on 4 weeks data