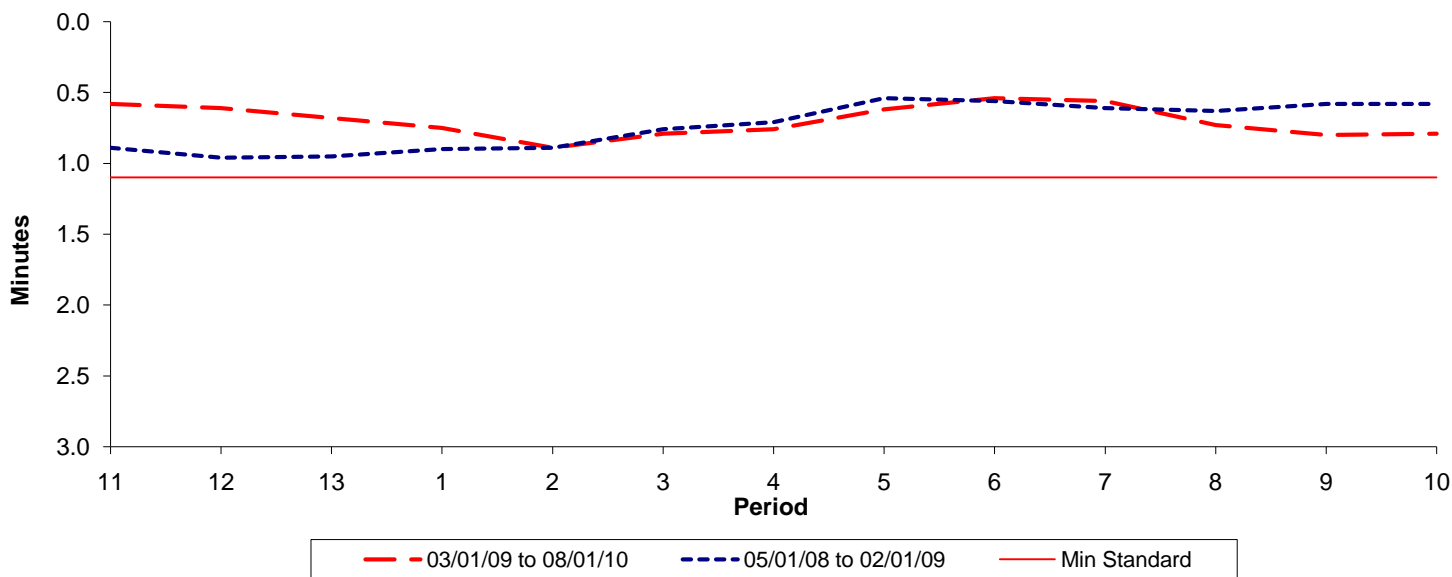




Reliability Performance (High Frequency)

Excess Waiting Time (minutes)

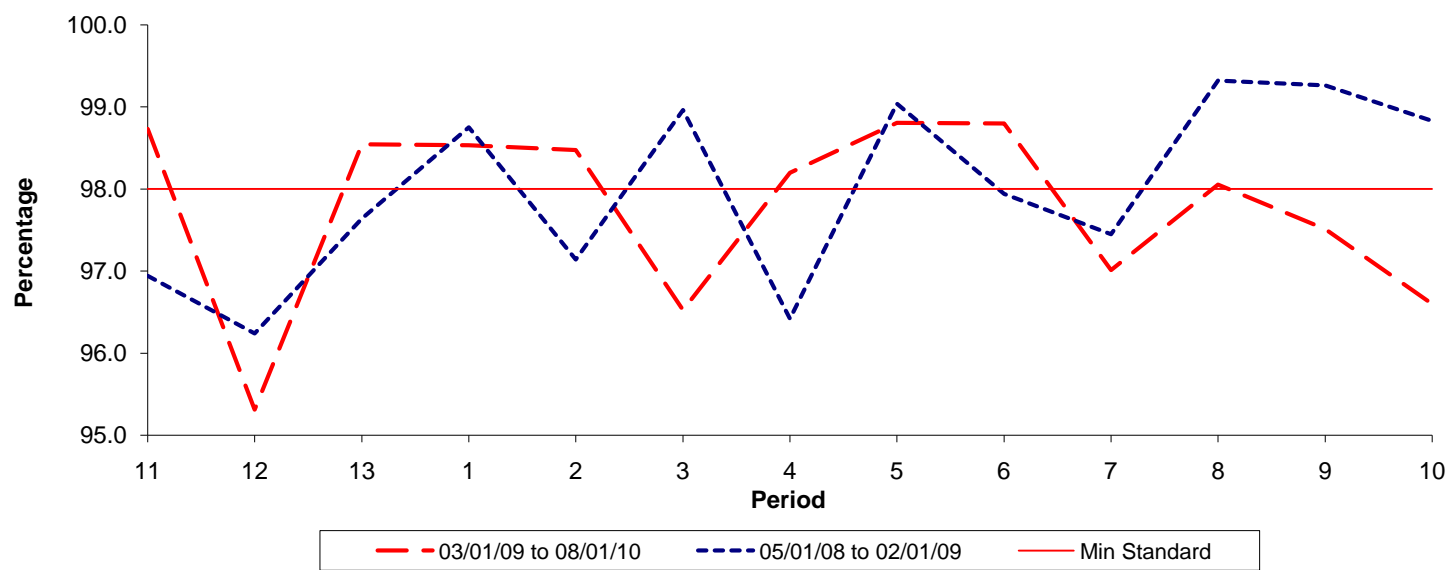


Date Range / Period	11	12	13	1	2	3	4	5	6	7	8	9	10
03/01/09 to 08/01/10	0.58	0.61	0.68	0.75	0.89	0.79	0.76	0.62	0.54	0.56	0.73	0.80	0.79
05/01/08 to 02/01/09	0.89	0.96	0.95	0.90	0.89	0.76	0.71	0.54	0.56	0.61	0.63	0.58	0.58
Min Standard	1.10	1.10	1.10	1.10	1.10	1.10	1.10	1.10	1.10	1.10	1.10	1.10	1.10

Excess Waiting Time figures are based on 12 weeks data

Kilometre Performance

% Kilometres Operated



Date Range / Period	11	12	13	1	2	3	4	5	6	7	8	9	10
03/01/09 to 08/01/10	98.73	95.31	98.55	98.53	98.48	96.52	98.20	98.81	98.80	97.01	98.05	97.51	96.60
05/01/08 to 02/01/09	96.94	96.24	97.64	98.75	97.14	98.96	96.42	99.04	97.94	97.45	99.32	99.26	98.83
Min Standard	98.00	98.00	98.00	98.00	98.00	98.00	98.00	98.00	98.00	98.00	98.00	98.00	98.00

Kilometre figures are based on 4 weeks data