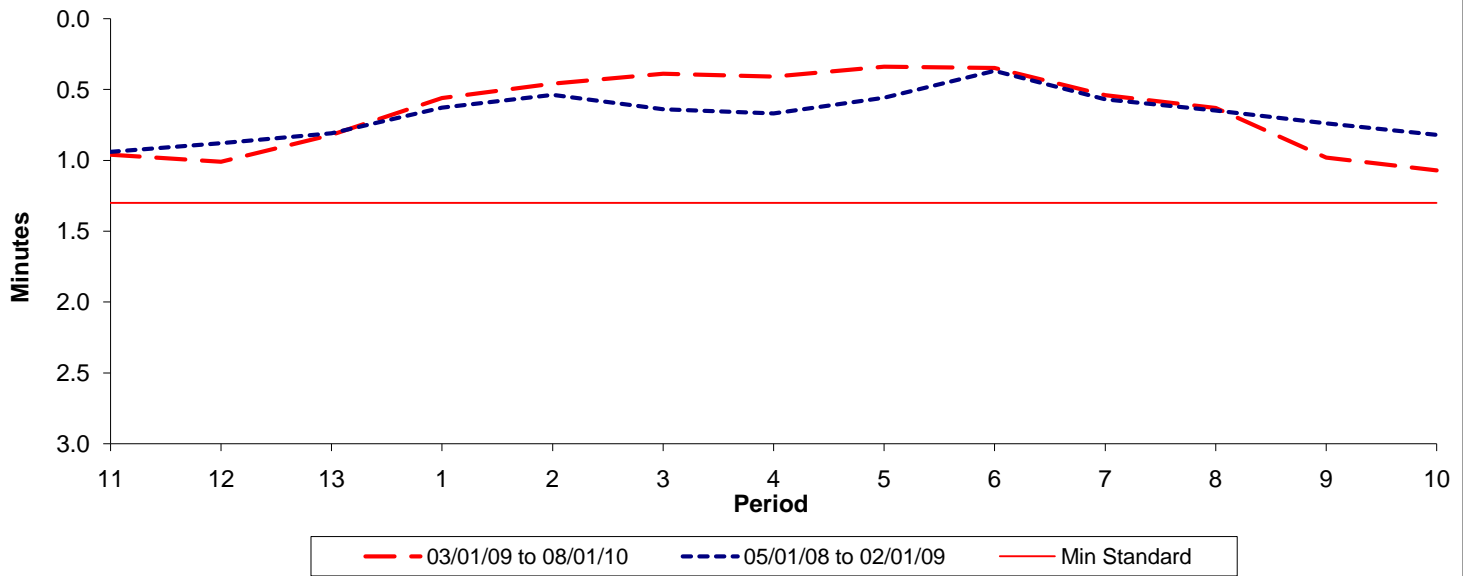




Reliability Performance (High Frequency)

Excess Waiting Time (minutes)

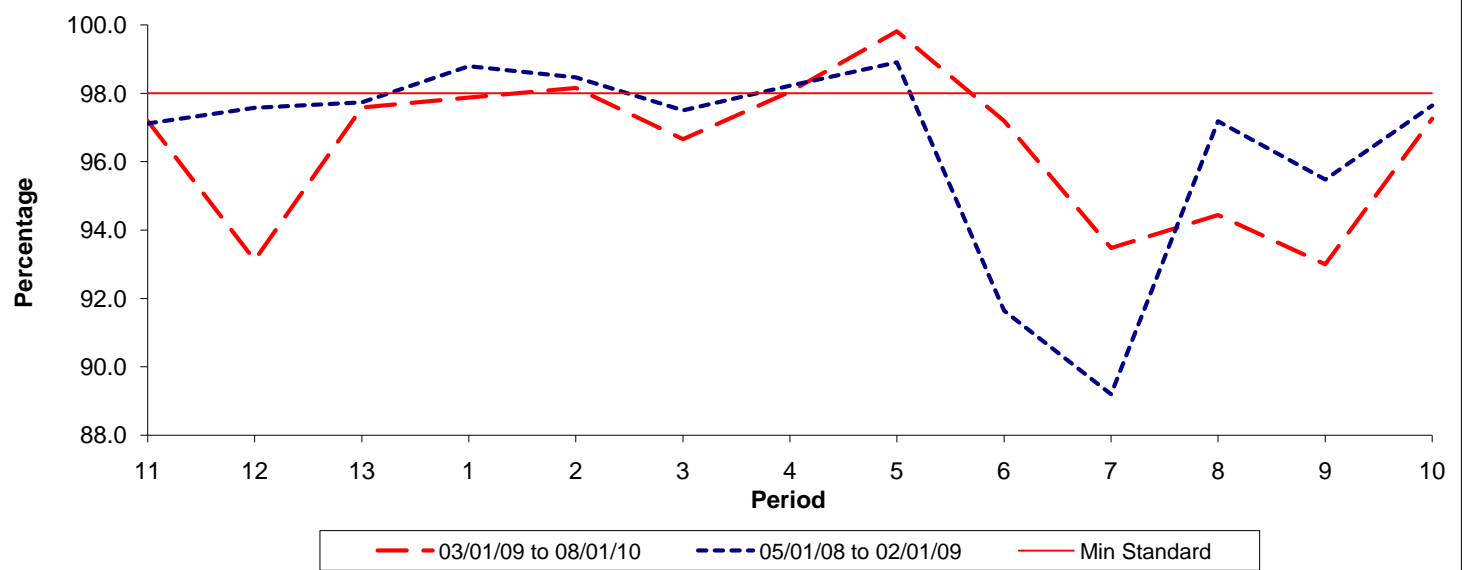


Date Range / Period	11	12	13	1	2	3	4	5	6	7	8	9	10
03/01/09 to 08/01/10	0.96	1.01	0.82	0.56	0.46	0.39	0.41	0.34	0.35	0.54	0.63	0.98	1.07
05/01/08 to 02/01/09	0.94	0.88	0.81	0.63	0.54	0.64	0.67	0.56	0.37	0.57	0.65	0.74	0.82
Min Standard	1.30	1.30	1.30	1.30	1.30	1.30	1.30	1.30	1.30	1.30	1.30	1.30	1.30

Excess Waiting Time figures are based on 12 weeks data

Kilometre Performance

% Kilometres Operated



Date Range / Period	11	12	13	1	2	3	4	5	6	7	8	9	10
03/01/09 to 08/01/10	97.19	93.12	97.58	97.87	98.15	96.66	98.04	99.81	97.19	93.48	94.44	93.00	97.26
05/01/08 to 02/01/09	97.12	97.58	97.74	98.80	98.47	97.50	98.23	98.91	91.64	89.19	97.19	95.48	97.64
Min Standard	98.00	98.00	98.00	98.00	98.00	98.00	98.00	98.00	98.00	98.00	98.00	98.00	98.00

Kilometre figures are based on 4 weeks data