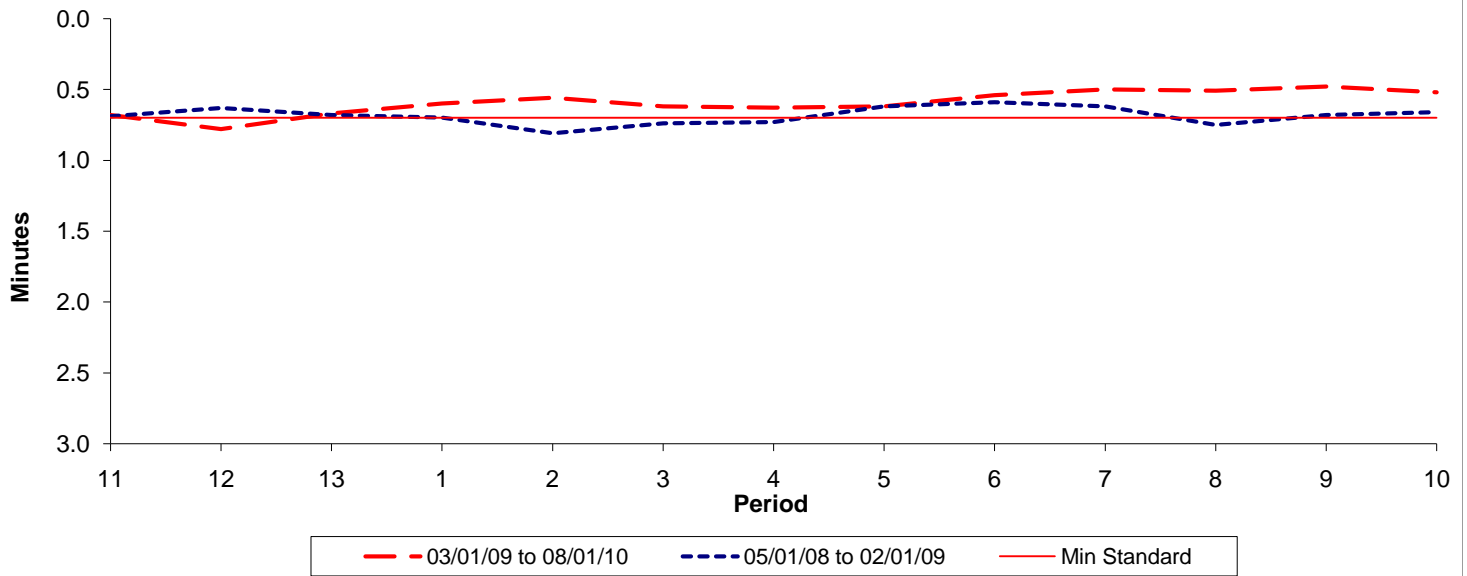




Reliability Performance (High Frequency)

Excess Waiting Time (minutes)

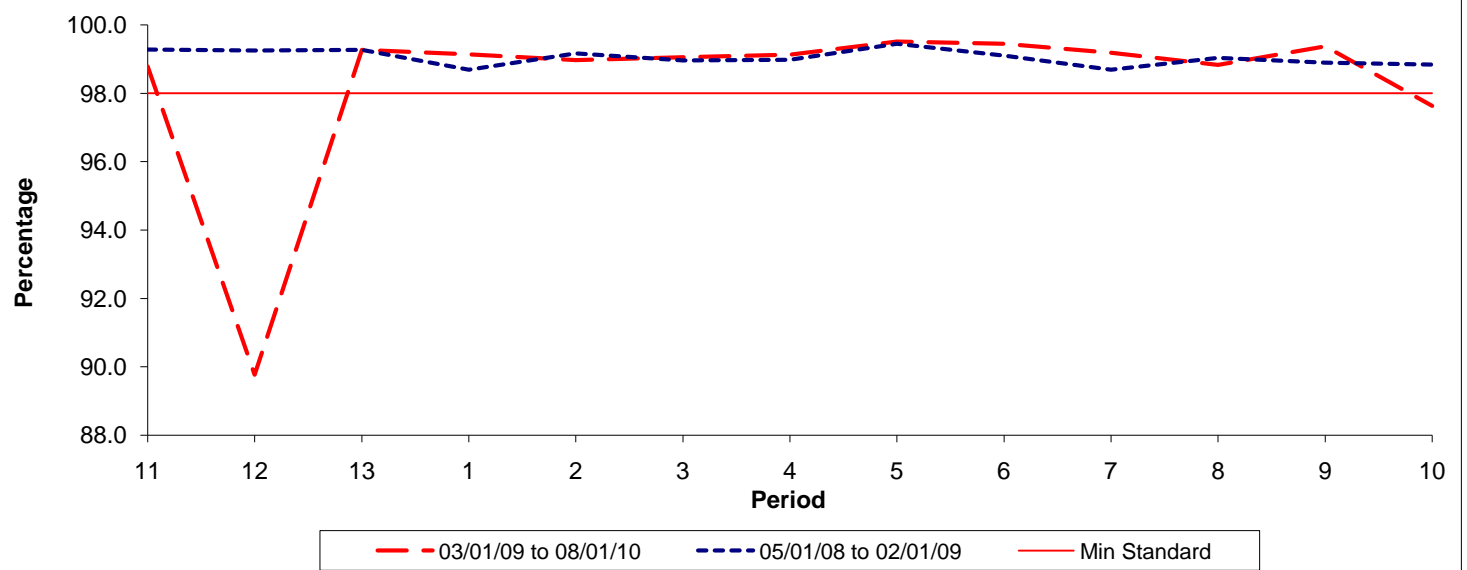


Date Range / Period	11	12	13	1	2	3	4	5	6	7	8	9	10
03/01/09 to 08/01/10	0.68	0.78	0.67	0.60	0.56	0.62	0.63	0.62	0.54	0.50	0.51	0.48	0.52
05/01/08 to 02/01/09	0.69	0.63	0.68	0.70	0.81	0.74	0.73	0.62	0.59	0.62	0.75	0.68	0.66
Min Standard	0.70	0.70	0.70	0.70	0.70	0.70	0.70	0.70	0.70	0.70	0.70	0.70	0.70

Excess Waiting Time figures are based on 12 weeks data

Kilometre Performance

% Kilometres Operated



Date Range / Period	11	12	13	1	2	3	4	5	6	7	8	9	10
03/01/09 to 08/01/10	98.78	89.77	99.27	99.14	98.97	99.05	99.13	99.51	99.44	99.18	98.83	99.37	97.63
05/01/08 to 02/01/09	99.28	99.25	99.27	98.69	99.17	98.96	98.98	99.45	99.10	98.69	99.04	98.90	98.84
Min Standard	98.00	98.00	98.00	98.00	98.00	98.00	98.00	98.00	98.00	98.00	98.00	98.00	98.00

Kilometre figures are based on 4 weeks data