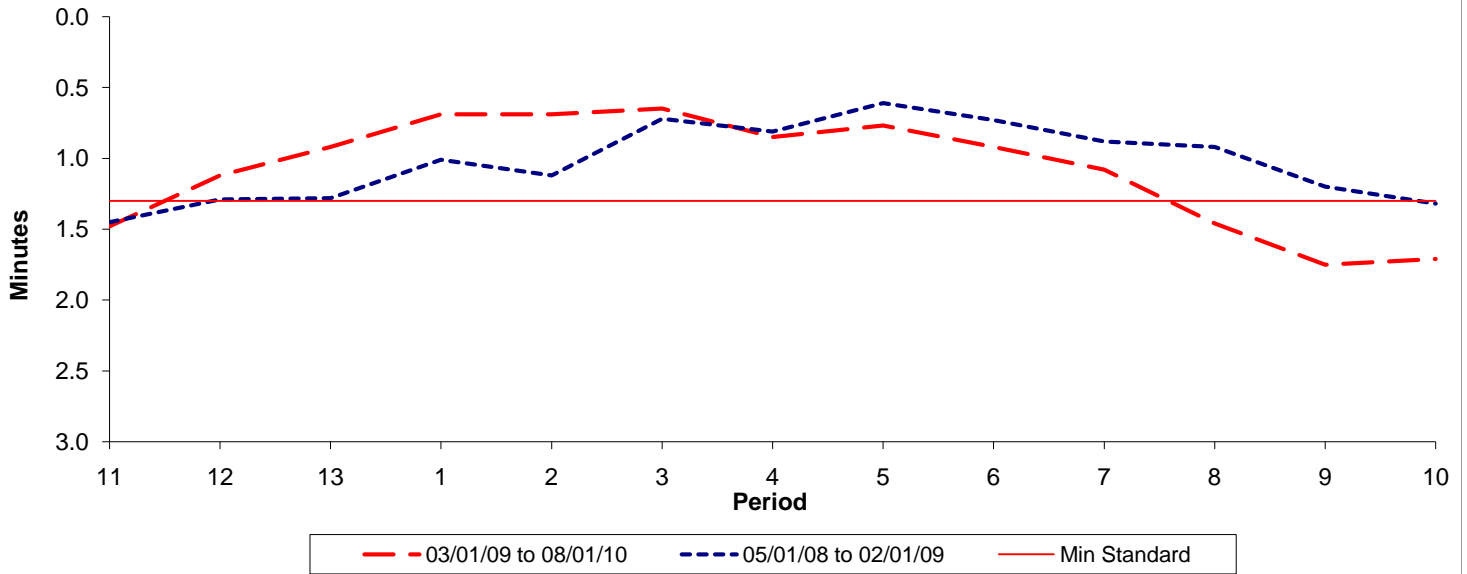




**Reliability Performance ( High Frequency )**

**Excess Waiting Time (minutes)**

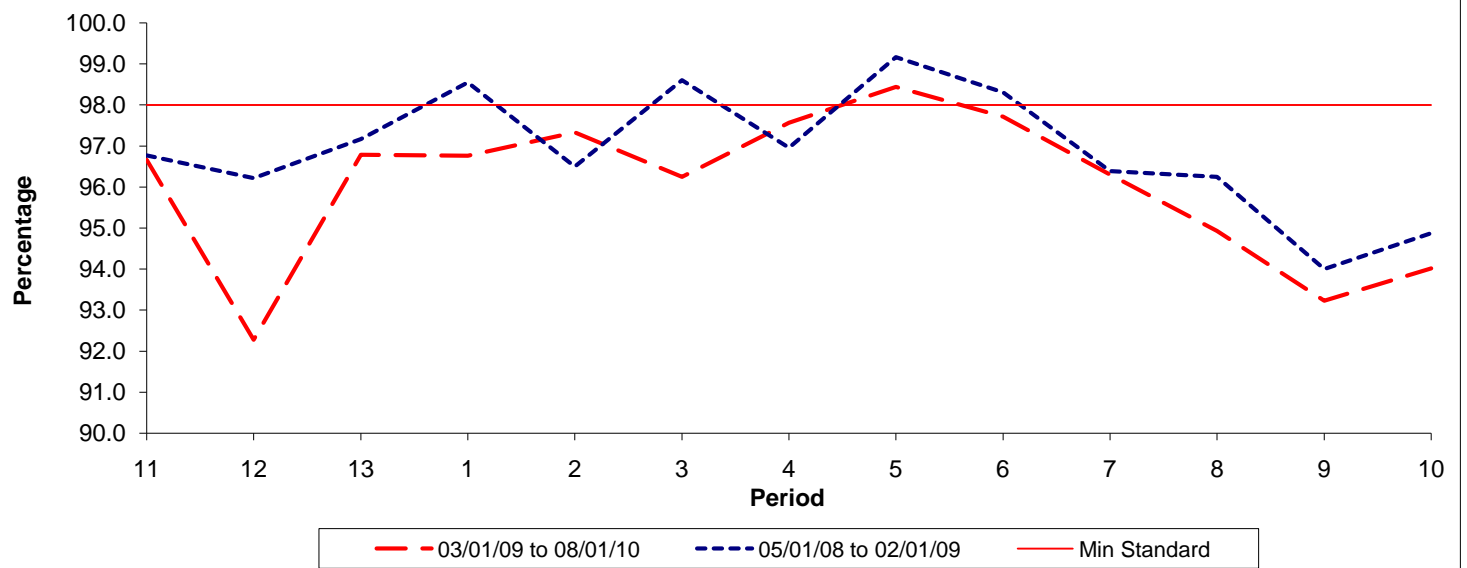


Date Range / Period	11	12	13	1	2	3	4	5	6	7	8	9	10
03/01/09 to 08/01/10	1.48	1.12	0.92	0.69	0.69	0.65	0.85	0.77	0.92	1.08	1.46	1.75	1.71
05/01/08 to 02/01/09	1.45	1.29	1.28	1.01	1.12	0.72	0.81	0.61	0.73	0.88	0.92	1.20	1.32
Min Standard	1.30	1.30	1.30	1.30	1.30	1.30	1.30	1.30	1.30	1.30	1.30	1.30	1.30

Excess Waiting Time figures are based on 12 weeks data

**Kilometre Performance**

**% Kilometres Operated**



Date Range / Period	11	12	13	1	2	3	4	5	6	7	8	9	10
03/01/09 to 08/01/10	96.66	92.27	96.79	96.76	97.34	96.25	97.57	98.44	97.72	96.30	94.93	93.23	94.01
05/01/08 to 02/01/09	96.77	96.22	97.17	98.55	96.50	98.61	96.96	99.17	98.31	96.39	96.25	94.00	94.88
Min Standard	98.00	98.00	98.00	98.00	98.00	98.00	98.00	98.00	98.00	98.00	98.00	98.00	98.00

Kilometre figures are based on 4 weeks data