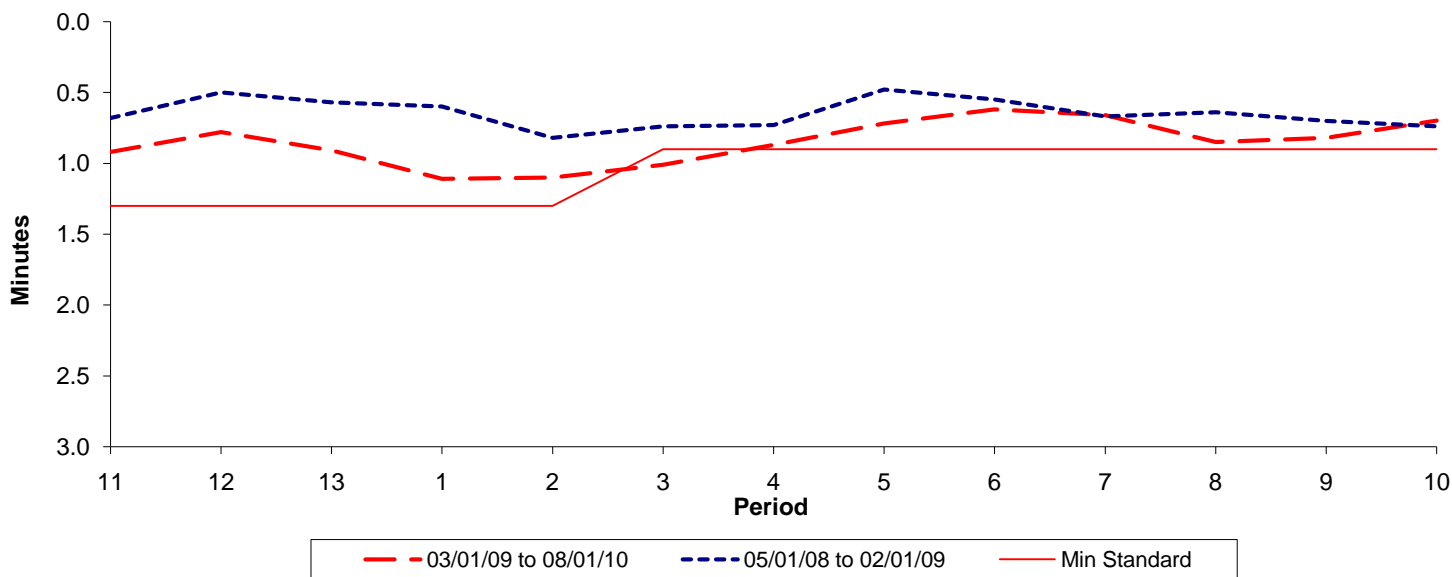




Reliability Performance (High Frequency)

Excess Waiting Time (minutes)

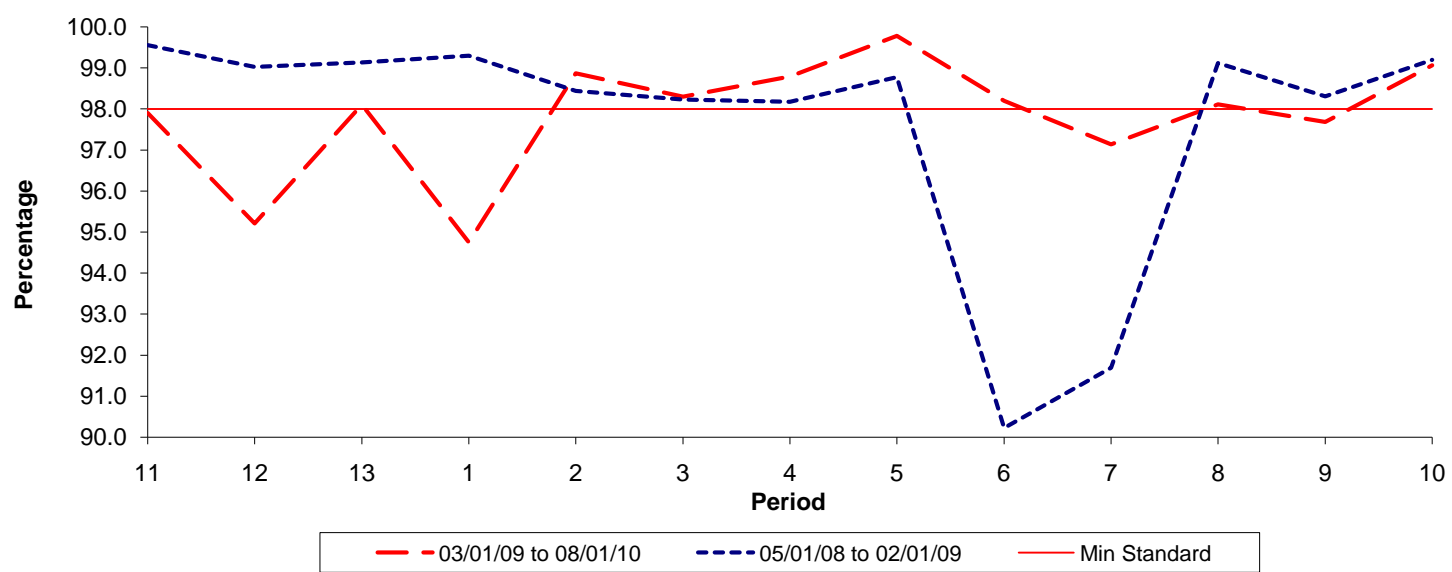


Date Range / Period	11	12	13	1	2	3	4	5	6	7	8	9	10
03/01/09 to 08/01/10	0.92	0.78	0.91	1.11	1.10	1.01	0.87	0.72	0.62	0.66	0.85	0.82	0.70
05/01/08 to 02/01/09	0.68	0.50	0.57	0.60	0.82	0.74	0.73	0.48	0.55	0.67	0.64	0.70	0.74
Min Standard	1.30	1.30	1.30	1.30	1.30	0.90	0.90	0.90	0.90	0.90	0.90	0.90	0.90

Excess Waiting Time figures are based on 12 weeks data

Kilometre Performance

% Kilometres Operated



Date Range / Period	11	12	13	1	2	3	4	5	6	7	8	9	10
03/01/09 to 08/01/10	97.90	95.21	98.10	94.75	98.87	98.30	98.79	99.78	98.20	97.14	98.11	97.68	99.06
05/01/08 to 02/01/09	99.56	99.03	99.14	99.30	98.44	98.23	98.18	98.78	90.22	91.69	99.12	98.31	99.20
Min Standard	98.00	98.00	98.00	98.00	98.00	98.00	98.00	98.00	98.00	98.00	98.00	98.00	98.00

Kilometre figures are based on 4 weeks data