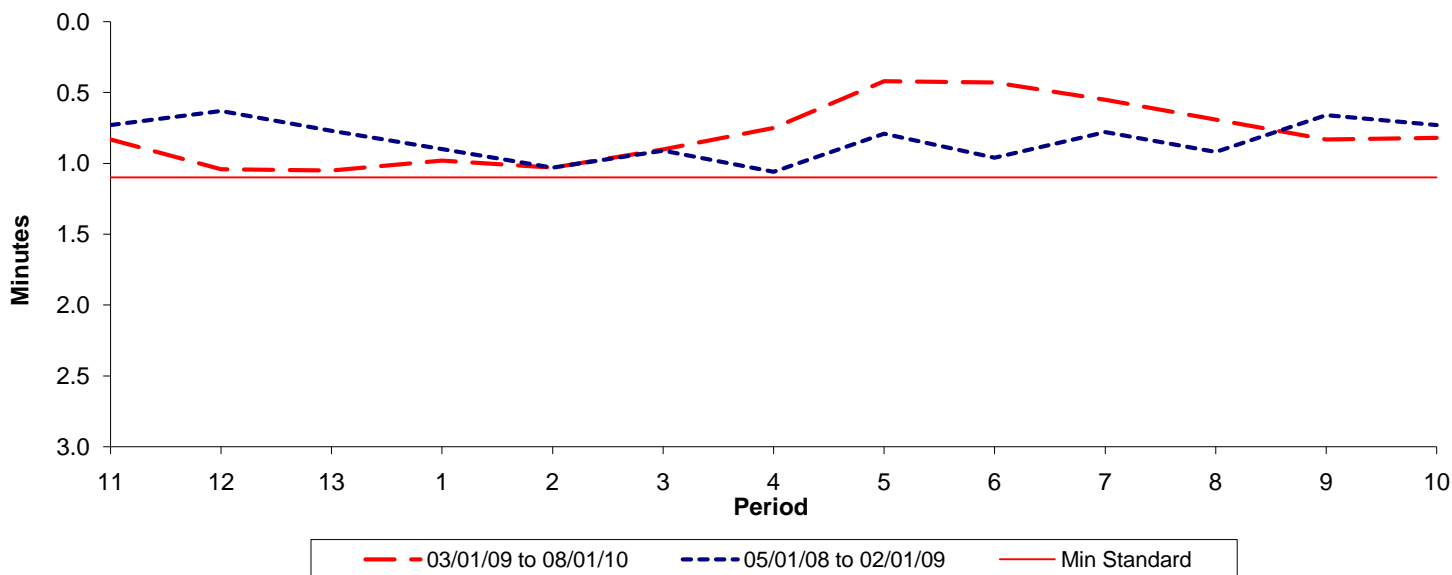




**Reliability Performance ( High Frequency )**

**Excess Waiting Time (minutes)**

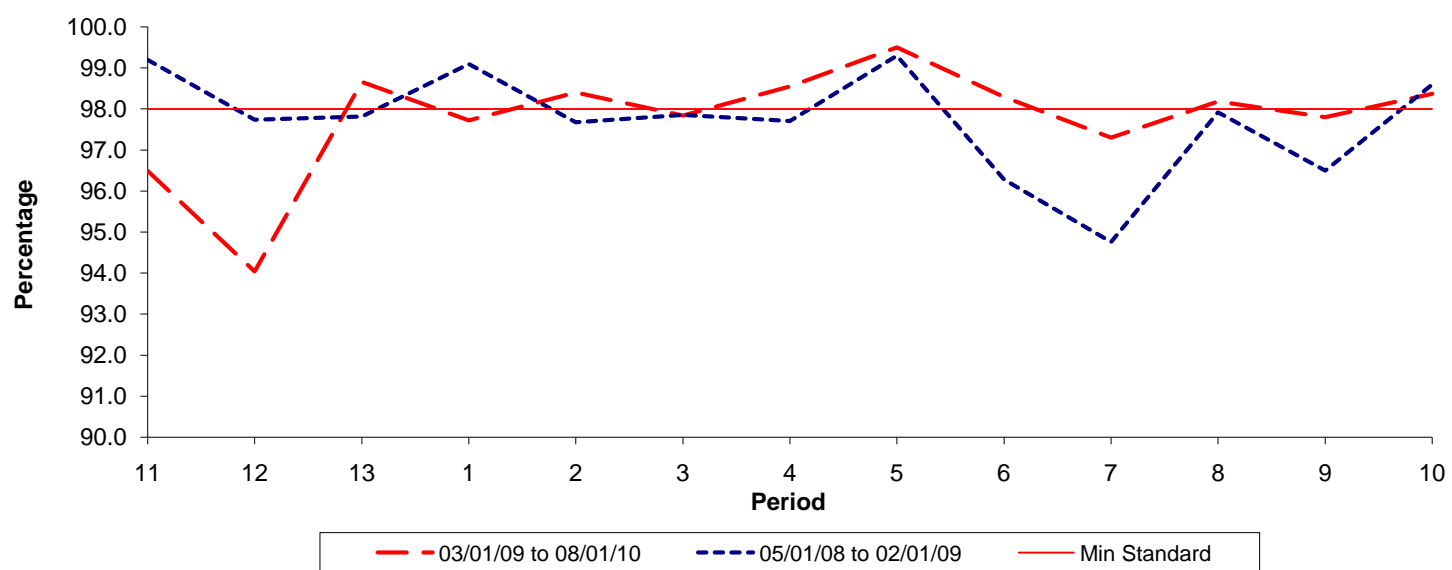


Date Range / Period	11	12	13	1	2	3	4	5	6	7	8	9	10
03/01/09 to 08/01/10	0.83	1.04	1.05	0.98	1.03	0.90	0.75	0.42	0.43	0.55	0.69	0.83	0.82
05/01/08 to 02/01/09	0.73	0.63	0.77	0.90	1.03	0.91	1.06	0.79	0.96	0.78	0.92	0.66	0.73
Min Standard	1.10	1.10	1.10	1.10	1.10	1.10	1.10	1.10	1.10	1.10	1.10	1.10	1.10

Excess Waiting Time figures are based on 12 weeks data

**Kilometre Performance**

**% Kilometres Operated**



Date Range / Period	11	12	13	1	2	3	4	5	6	7	8	9	10
03/01/09 to 08/01/10	96.49	94.04	98.66	97.72	98.40	97.84	98.55	99.50	98.29	97.30	98.18	97.80	98.37
05/01/08 to 02/01/09	99.20	97.74	97.82	99.10	97.68	97.86	97.71	99.30	96.28	94.76	97.92	96.50	98.60
Min Standard	98.00	98.00	98.00	98.00	98.00	98.00	98.00	98.00	98.00	98.00	98.00	98.00	98.00

Kilometre figures are based on 4 weeks data