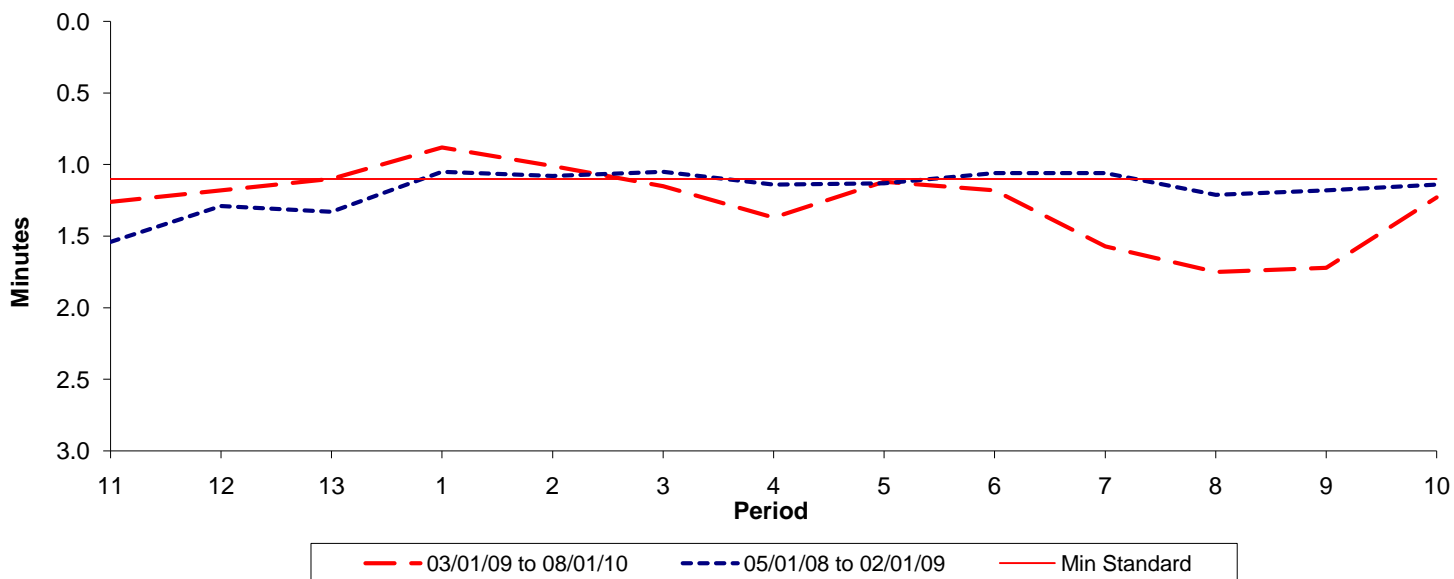




Reliability Performance (High Frequency)

Excess Waiting Time (minutes)

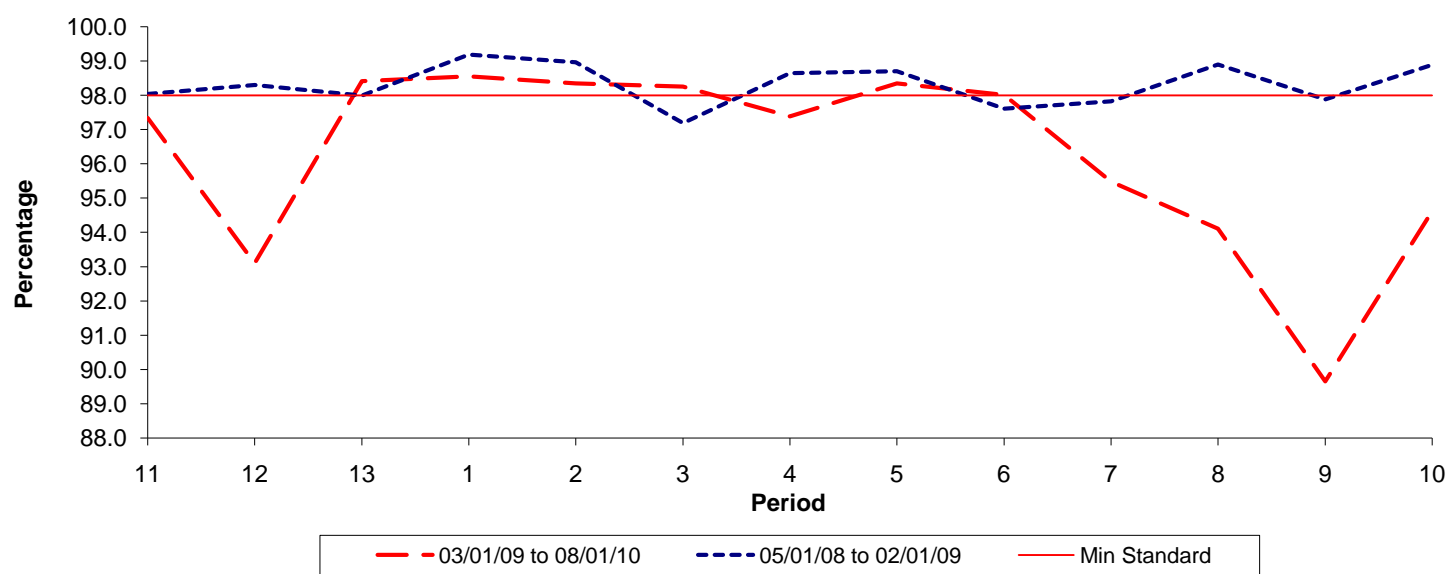


Date Range / Period	11	12	13	1	2	3	4	5	6	7	8	9	10
03/01/09 to 08/01/10	1.26	1.18	1.10	0.88	1.01	1.15	1.37	1.12	1.18	1.57	1.75	1.72	1.23
05/01/08 to 02/01/09	1.54	1.29	1.33	1.05	1.08	1.05	1.14	1.13	1.06	1.06	1.21	1.18	1.14
Min Standard	1.10	1.10	1.10	1.10	1.10	1.10	1.10	1.10	1.10	1.10	1.10	1.10	1.10

Excess Waiting Time figures are based on 12 weeks data

Kilometre Performance

% Kilometres Operated



Date Range / Period	11	12	13	1	2	3	4	5	6	7	8	9	10
03/01/09 to 08/01/10	97.34	93.10	98.41	98.55	98.34	98.25	97.38	98.34	98.01	95.48	94.10	89.65	94.62
05/01/08 to 02/01/09	98.04	98.30	97.99	99.19	98.97	97.19	98.65	98.70	97.61	97.83	98.90	97.88	98.89
Min Standard	98.00	98.00	98.00	98.00	98.00	98.00	98.00	98.00	98.00	98.00	98.00	98.00	98.00

Kilometre figures are based on 4 weeks data