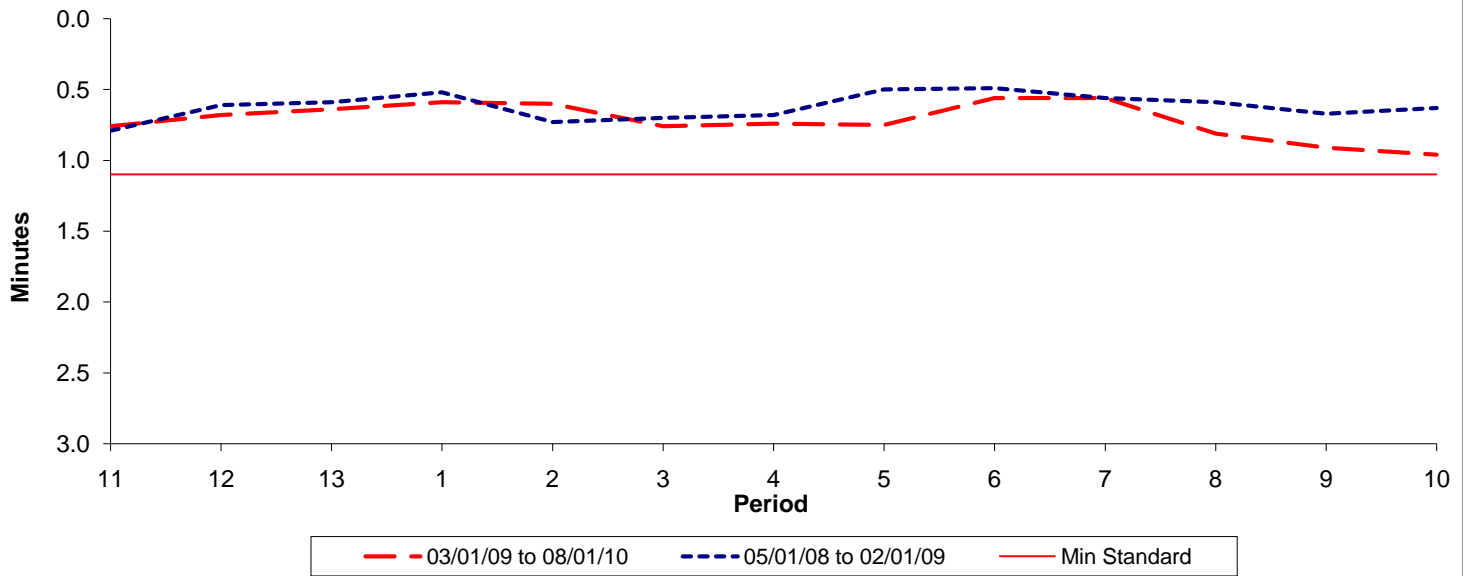




Reliability Performance (High Frequency)

Excess Waiting Time (minutes)

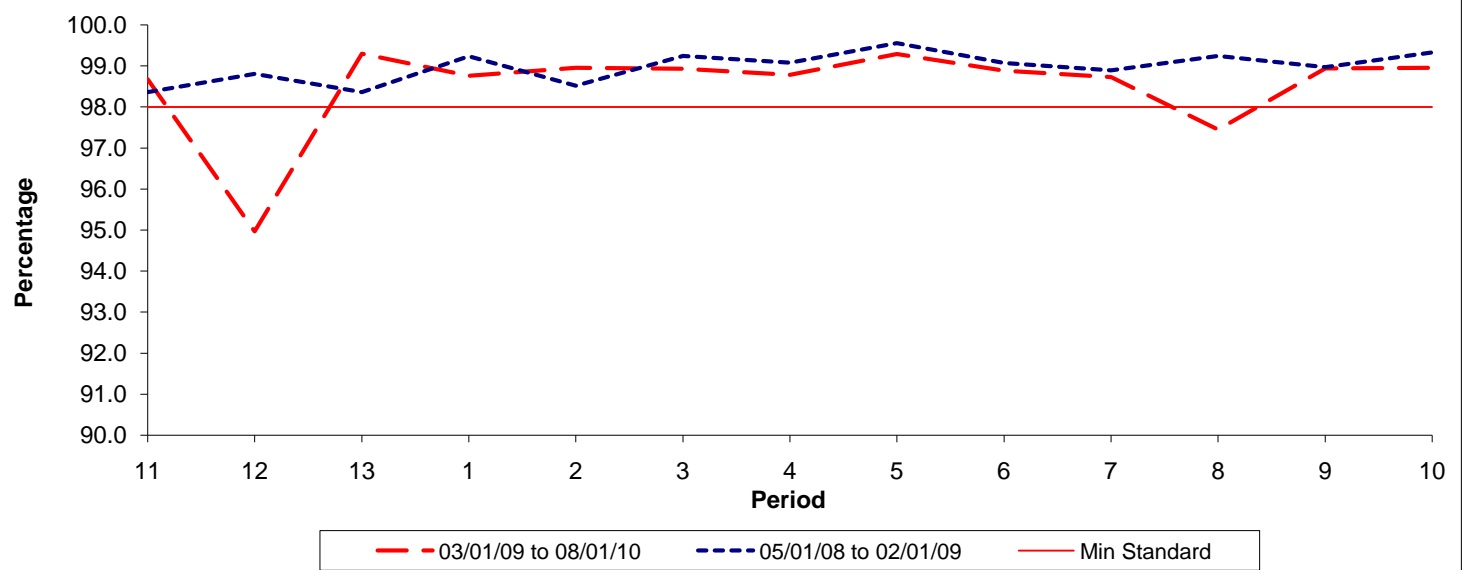


Date Range / Period	11	12	13	1	2	3	4	5	6	7	8	9	10
03/01/09 to 08/01/10	0.76	0.68	0.64	0.59	0.60	0.76	0.74	0.75	0.56	0.56	0.81	0.91	0.96
05/01/08 to 02/01/09	0.79	0.61	0.59	0.52	0.73	0.70	0.68	0.50	0.49	0.56	0.59	0.67	0.63
Min Standard	1.10	1.10	1.10	1.10	1.10	1.10	1.10	1.10	1.10	1.10	1.10	1.10	1.10

Excess Waiting Time figures are based on 12 weeks data

Kilometre Performance

% Kilometres Operated



Date Range / Period	11	12	13	1	2	3	4	5	6	7	8	9	10
03/01/09 to 08/01/10	98.67	94.97	99.30	98.76	98.96	98.93	98.78	99.29	98.88	98.73	97.45	98.94	98.95
05/01/08 to 02/01/09	98.36	98.81	98.36	99.24	98.52	99.25	99.08	99.56	99.07	98.89	99.25	98.97	99.33
Min Standard	98.00	98.00	98.00	98.00	98.00	98.00	98.00	98.00	98.00	98.00	98.00	98.00	98.00

Kilometre figures are based on 4 weeks data