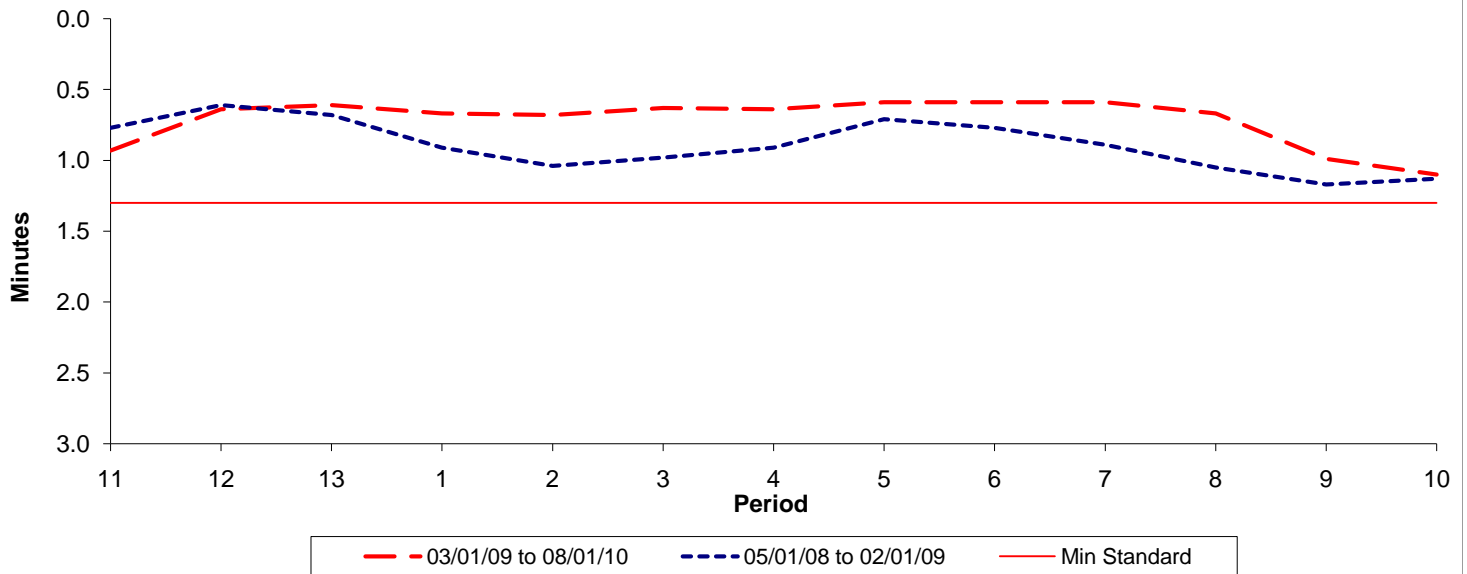




Reliability Performance (High Frequency)

Excess Waiting Time (minutes)

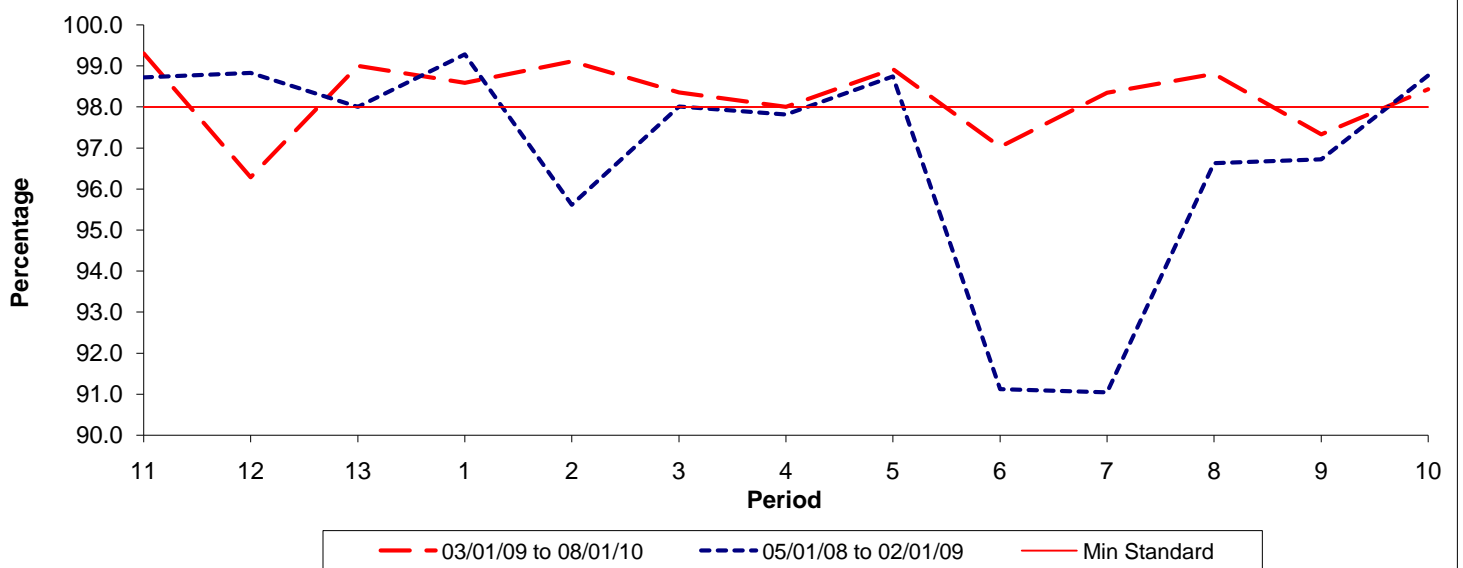


Date Range / Period	11	12	13	1	2	3	4	5	6	7	8	9	10
03/01/09 to 08/01/10	0.93	0.64	0.61	0.67	0.68	0.63	0.64	0.59	0.59	0.59	0.67	0.99	1.10
05/01/08 to 02/01/09	0.77	0.61	0.68	0.91	1.04	0.98	0.91	0.71	0.77	0.89	1.05	1.17	1.13
Min Standard	1.30	1.30	1.30	1.30	1.30	1.30	1.30	1.30	1.30	1.30	1.30	1.30	1.30

Excess Waiting Time figures are based on 12 weeks data

Kilometre Performance

% Kilometres Operated



Date Range / Period	11	12	13	1	2	3	4	5	6	7	8	9	10
03/01/09 to 08/01/10	99.31	96.28	99.00	98.59	99.11	98.36	98.01	98.93	97.03	98.35	98.81	97.33	98.43
05/01/08 to 02/01/09	98.72	98.83	98.00	99.28	95.61	98.01	97.81	98.74	91.12	91.04	96.63	96.72	98.76
Min Standard	98.00	98.00	98.00	98.00	98.00	98.00	98.00	98.00	98.00	98.00	98.00	98.00	98.00

Kilometre figures are based on 4 weeks data