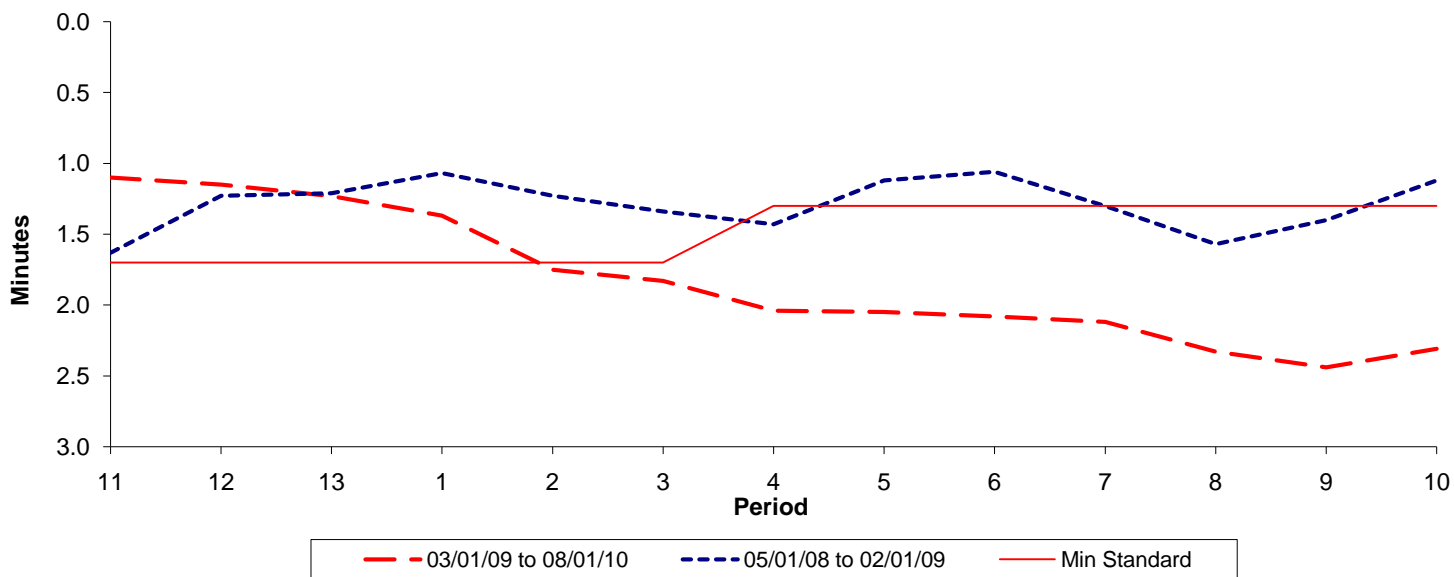




Reliability Performance (High Frequency)

Excess Waiting Time (minutes)

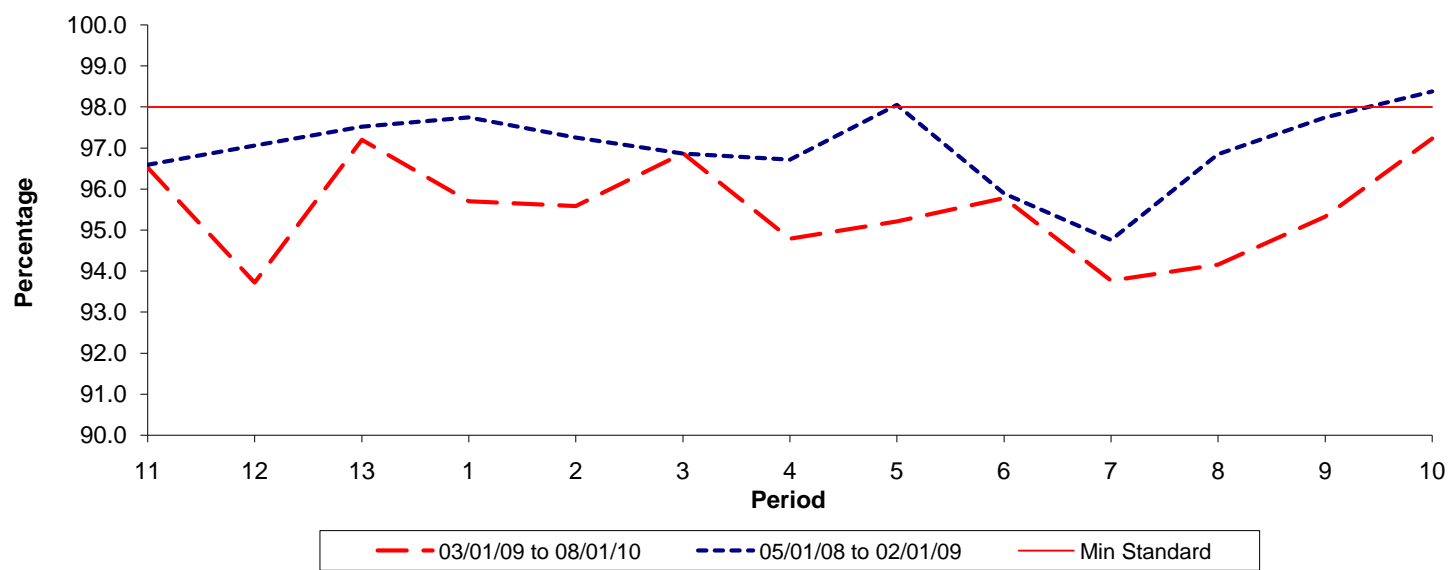


Date Range / Period	11	12	13	1	2	3	4	5	6	7	8	9	10
03/01/09 to 08/01/10	1.10	1.15	1.23	1.37	1.75	1.83	2.04	2.05	2.08	2.12	2.33	2.44	2.31
05/01/08 to 02/01/09	1.63	1.23	1.21	1.07	1.23	1.34	1.43	1.12	1.06	1.30	1.57	1.40	1.12
Min Standard	1.70	1.70	1.70	1.70	1.70	1.70	1.30	1.30	1.30	1.30	1.30	1.30	1.30

Excess Waiting Time figures are based on 12 weeks data

Kilometre Performance

% Kilometres Operated



Date Range / Period	11	12	13	1	2	3	4	5	6	7	8	9	10
03/01/09 to 08/01/10	96.52	93.72	97.20	95.71	95.59	96.87	94.79	95.21	95.78	93.77	94.16	95.33	97.23
05/01/08 to 02/01/09	96.59	97.06	97.52	97.75	97.26	96.87	96.72	98.05	95.89	94.76	96.85	97.75	98.38
Min Standard	98.00	98.00	98.00	98.00	98.00	98.00	98.00	98.00	98.00	98.00	98.00	98.00	98.00

Kilometre figures are based on 4 weeks data