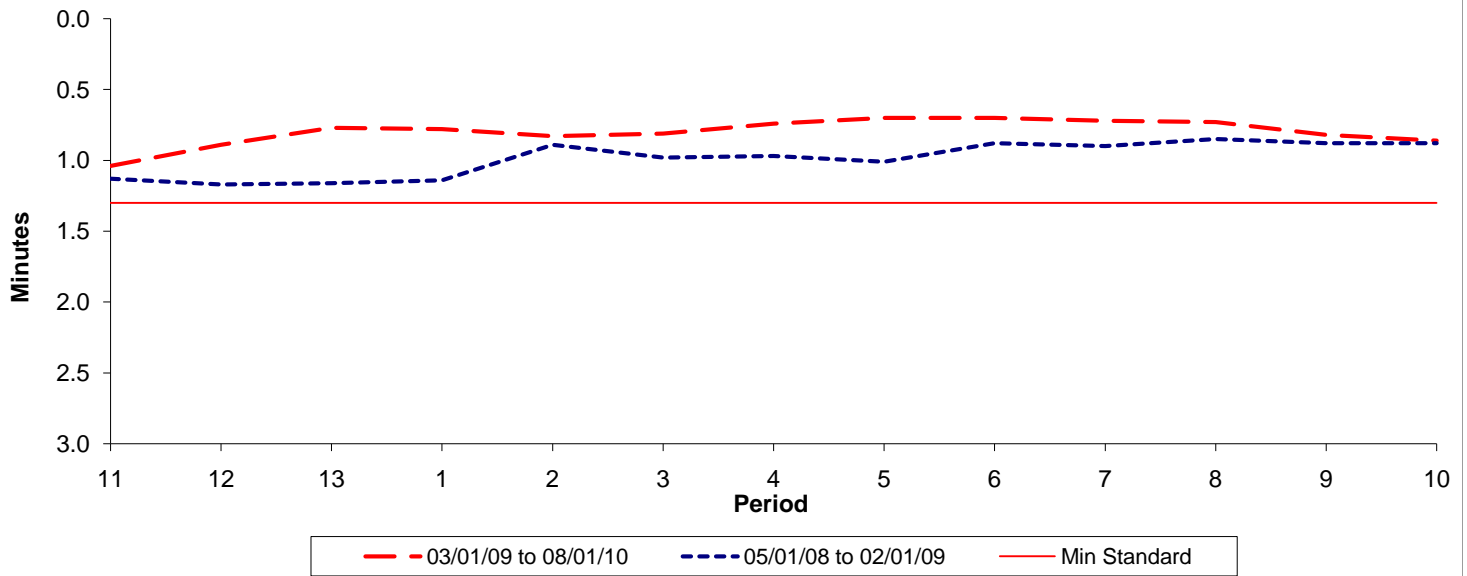




**Reliability Performance ( High Frequency )**

**Excess Waiting Time (minutes)**

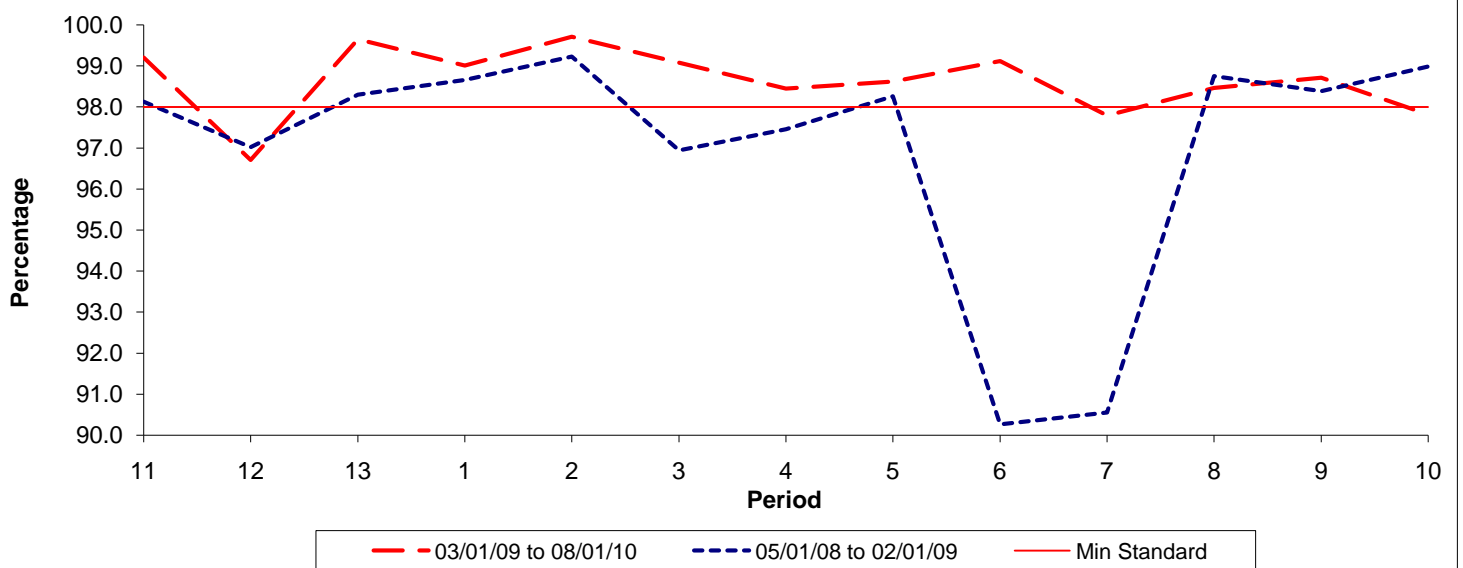


Date Range / Period	11	12	13	1	2	3	4	5	6	7	8	9	10
03/01/09 to 08/01/10	1.04	0.89	0.77	0.78	0.83	0.81	0.74	0.70	0.70	0.72	0.73	0.82	0.86
05/01/08 to 02/01/09	1.13	1.17	1.16	1.14	0.89	0.98	0.97	1.01	0.88	0.90	0.85	0.88	0.88
Min Standard	1.30	1.30	1.30	1.30	1.30	1.30	1.30	1.30	1.30	1.30	1.30	1.30	1.30

Excess Waiting Time figures are based on 12 weeks data

**Kilometre Performance**

**% Kilometres Operated**



Date Range / Period	11	12	13	1	2	3	4	5	6	7	8	9	10
03/01/09 to 08/01/10	99.20	96.71	99.65	99.01	99.71	99.08	98.45	98.62	99.12	97.79	98.46	98.71	97.82
05/01/08 to 02/01/09	98.13	97.02	98.30	98.66	99.23	96.94	97.46	98.26	90.26	90.55	98.75	98.39	98.99
Min Standard	98.00	98.00	98.00	98.00	98.00	98.00	98.00	98.00	98.00	98.00	98.00	98.00	98.00

Kilometre figures are based on 4 weeks data