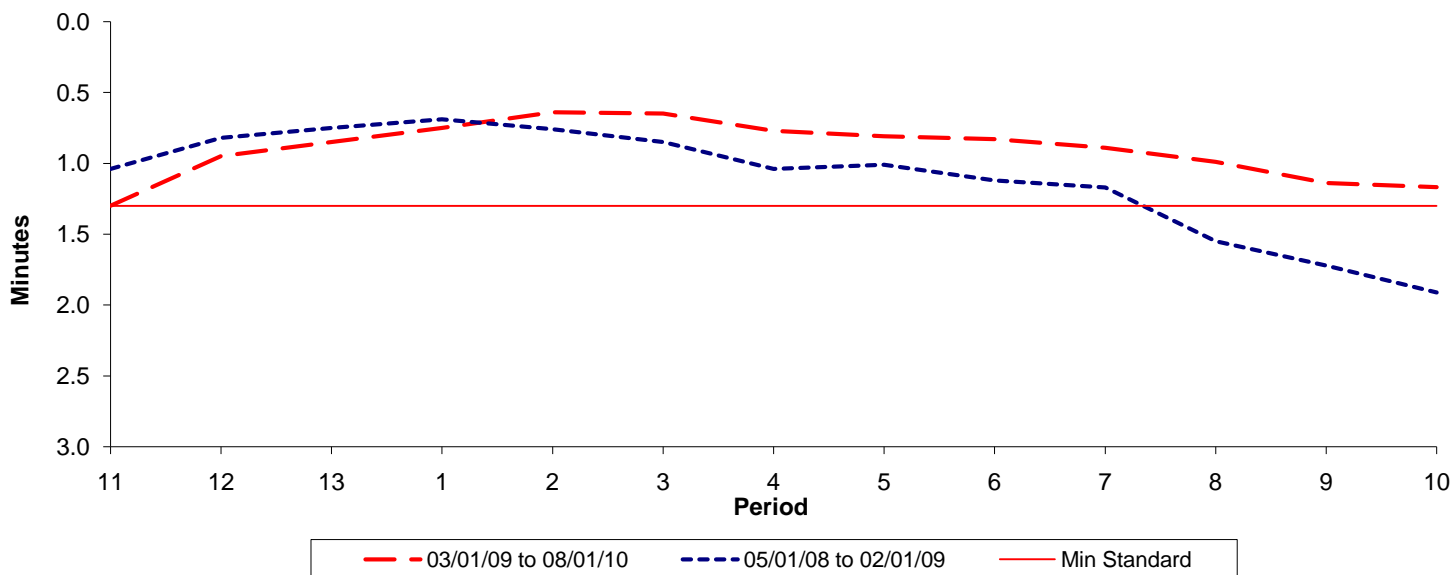




Reliability Performance (High Frequency)

Excess Waiting Time (minutes)

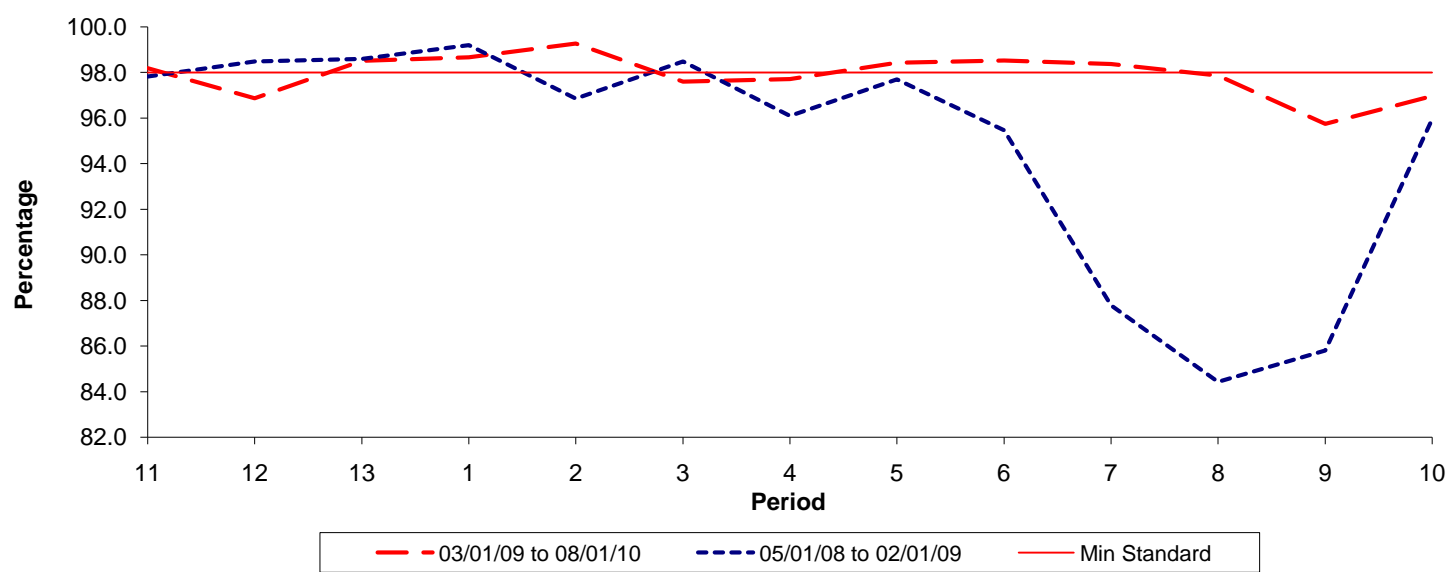


Date Range / Period	11	12	13	1	2	3	4	5	6	7	8	9	10
03/01/09 to 08/01/10	1.30	0.95	0.85	0.75	0.64	0.65	0.77	0.81	0.83	0.89	0.99	1.14	1.17
05/01/08 to 02/01/09	1.04	0.82	0.75	0.69	0.76	0.85	1.04	1.01	1.12	1.17	1.55	1.72	1.91
Min Standard	1.30	1.30	1.30	1.30	1.30	1.30	1.30	1.30	1.30	1.30	1.30	1.30	1.30

Excess Waiting Time figures are based on 12 weeks data

Kilometre Performance

% Kilometres Operated



Date Range / Period	11	12	13	1	2	3	4	5	6	7	8	9	10
03/01/09 to 08/01/10	98.19	96.87	98.51	98.66	99.27	97.59	97.71	98.42	98.53	98.37	97.87	95.74	96.97
05/01/08 to 02/01/09	97.82	98.49	98.59	99.20	96.86	98.48	96.10	97.70	95.46	87.79	84.43	85.81	95.95
Min Standard	98.00	98.00	98.00	98.00	98.00	98.00	98.00	98.00	98.00	98.00	98.00	98.00	98.00

Kilometre figures are based on 4 weeks data