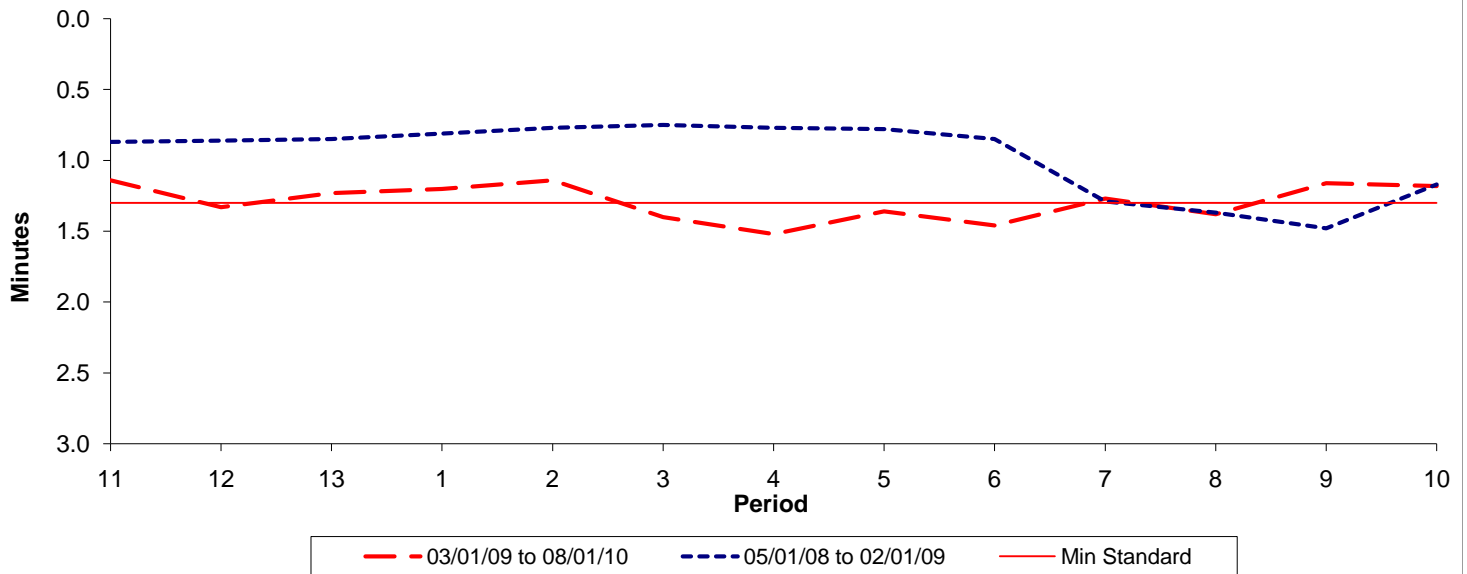




Reliability Performance (High Frequency)

Excess Waiting Time (minutes)

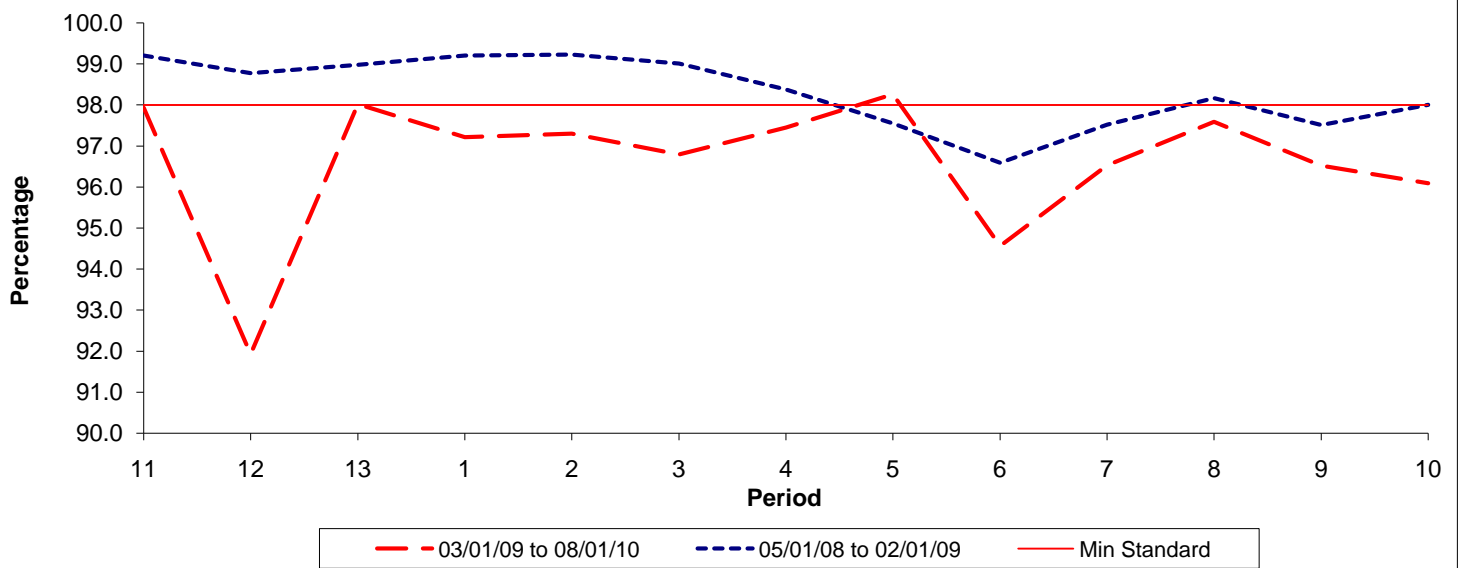


Date Range / Period	11	12	13	1	2	3	4	5	6	7	8	9	10
03/01/09 to 08/01/10	1.14	1.33	1.23	1.20	1.14	1.40	1.52	1.36	1.46	1.27	1.38	1.16	1.18
05/01/08 to 02/01/09	0.87	0.86	0.85	0.81	0.77	0.75	0.77	0.78	0.85	1.29	1.37	1.48	1.17
Min Standard	1.30	1.30	1.30	1.30	1.30	1.30	1.30	1.30	1.30	1.30	1.30	1.30	1.30

Excess Waiting Time figures are based on 12 weeks data

Kilometre Performance

% Kilometres Operated



Date Range / Period	11	12	13	1	2	3	4	5	6	7	8	9	10
03/01/09 to 08/01/10	97.93	91.92	98.02	97.21	97.30	96.79	97.45	98.26	94.56	96.53	97.59	96.52	96.09
05/01/08 to 02/01/09	99.21	98.78	98.98	99.21	99.23	99.01	98.38	97.55	96.59	97.52	98.17	97.51	98.00
Min Standard	98.00	98.00	98.00	98.00	98.00	98.00	98.00	98.00	98.00	98.00	98.00	98.00	98.00

Kilometre figures are based on 4 weeks data