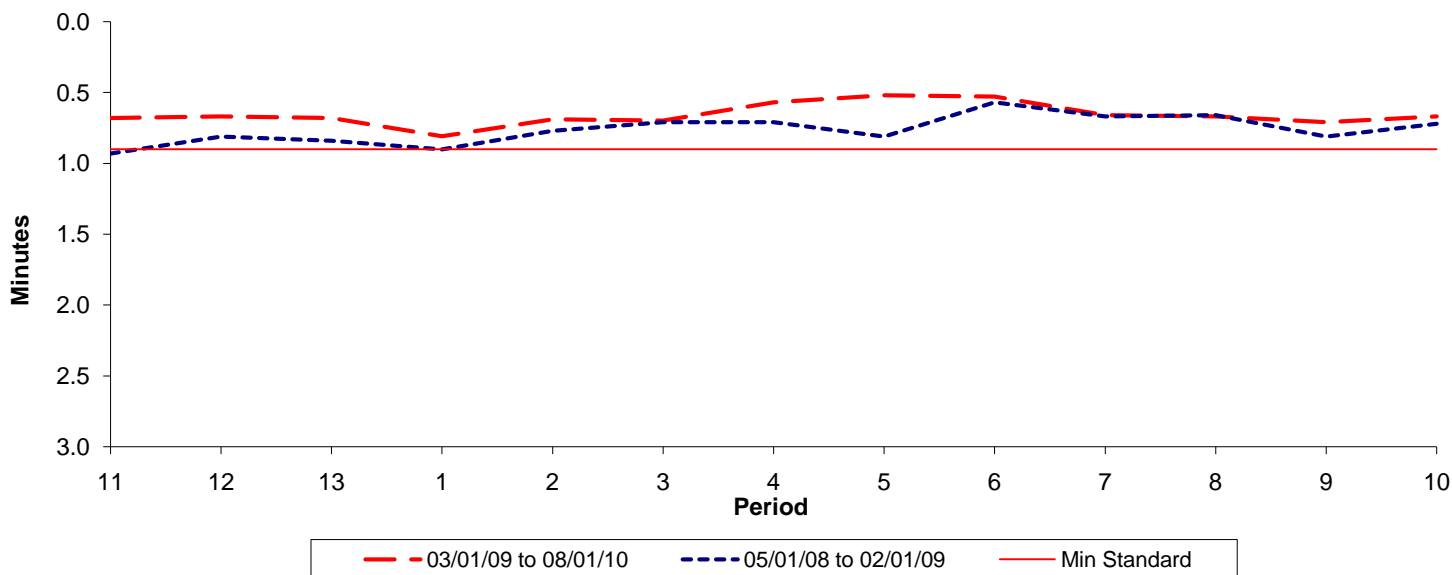




Reliability Performance (High Frequency)

Excess Waiting Time (minutes)

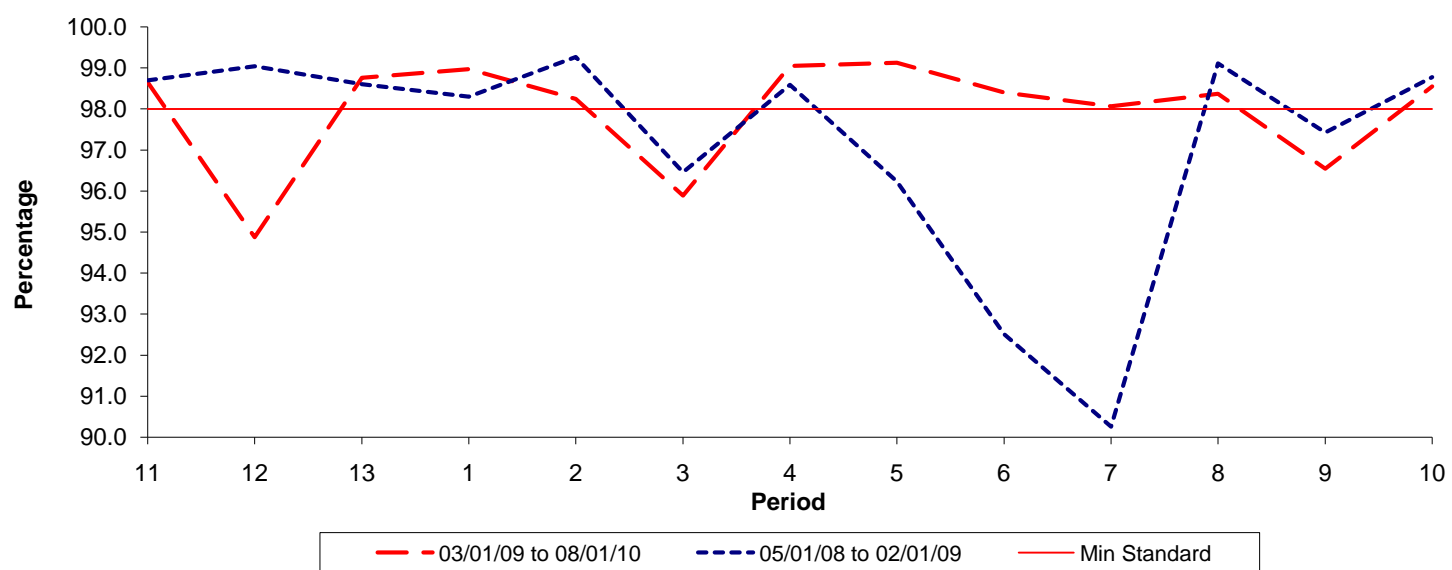


Date Range / Period	11	12	13	1	2	3	4	5	6	7	8	9	10
03/01/09 to 08/01/10	0.68	0.67	0.68	0.81	0.69	0.70	0.57	0.52	0.53	0.66	0.67	0.71	0.67
05/01/08 to 02/01/09	0.93	0.81	0.84	0.90	0.77	0.71	0.71	0.81	0.57	0.67	0.66	0.81	0.72
Min Standard	0.90	0.90	0.90	0.90	0.90	0.90	0.90	0.90	0.90	0.90	0.90	0.90	0.90

Excess Waiting Time figures are based on 12 weeks data

Kilometre Performance

% Kilometres Operated



Date Range / Period	11	12	13	1	2	3	4	5	6	7	8	9	10
03/01/09 to 08/01/10	98.65	94.88	98.76	98.97	98.24	95.89	99.05	99.12	98.40	98.07	98.37	96.54	98.55
05/01/08 to 02/01/09	98.70	99.04	98.61	98.30	99.27	96.46	98.59	96.23	92.51	90.25	99.11	97.43	98.78
Min Standard	98.00	98.00	98.00	98.00	98.00	98.00	98.00	98.00	98.00	98.00	98.00	98.00	98.00

Kilometre figures are based on 4 weeks data
S2 renumbered 488 in P5/08