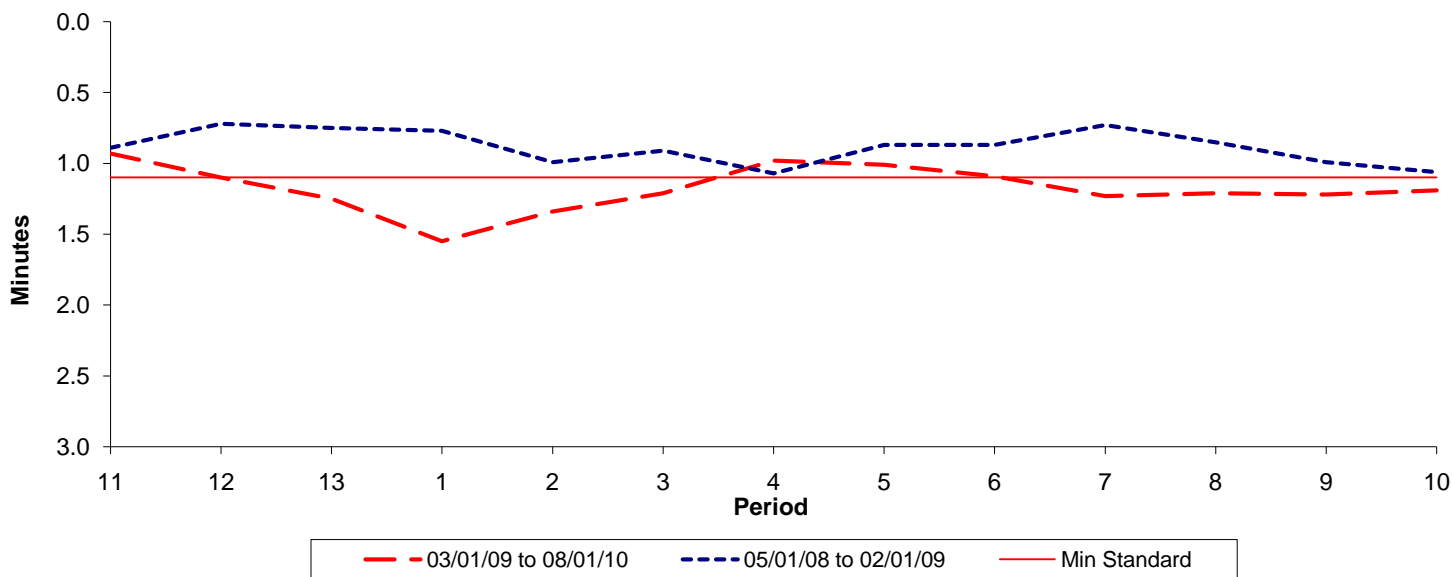




**Reliability Performance ( High Frequency )**

**Excess Waiting Time (minutes)**

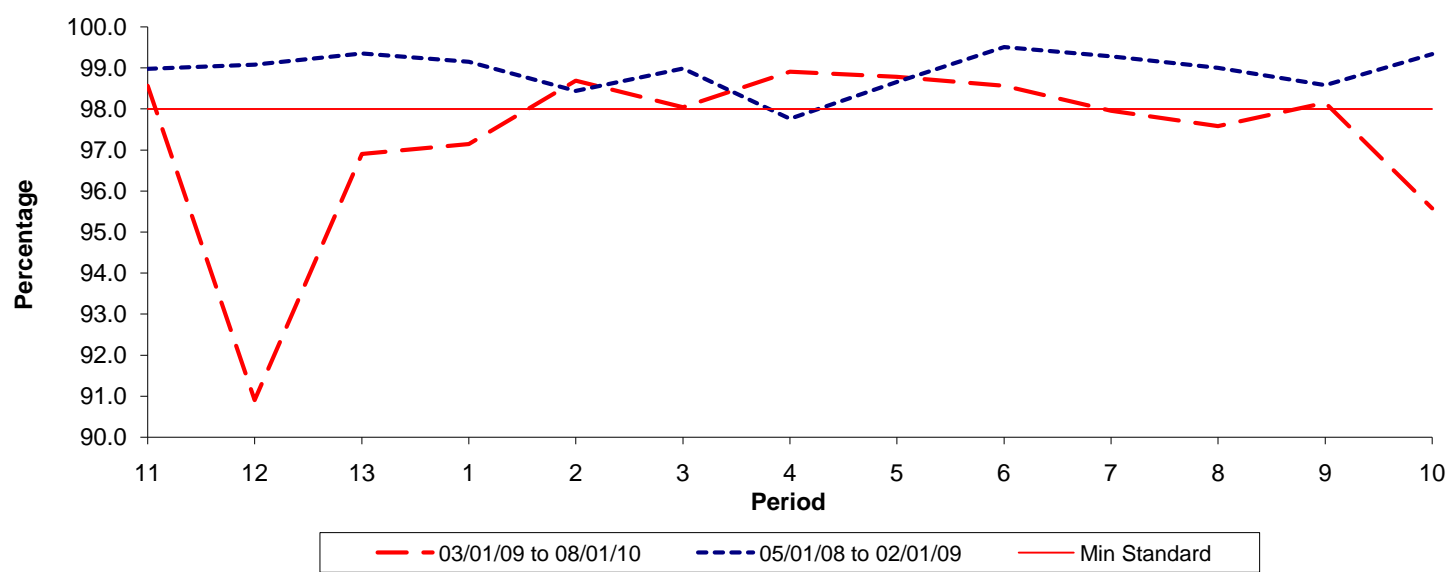


Date Range / Period	11	12	13	1	2	3	4	5	6	7	8	9	10
03/01/09 to 08/01/10	0.93	1.10	1.25	1.55	1.34	1.21	0.98	1.01	1.09	1.23	1.21	1.22	1.19
05/01/08 to 02/01/09	0.89	0.72	0.75	0.77	0.99	0.91	1.07	0.87	0.87	0.73	0.85	0.99	1.06
Min Standard	1.10	1.10	1.10	1.10	1.10	1.10	1.10	1.10	1.10	1.10	1.10	1.10	1.10

Excess Waiting Time figures are based on 12 weeks data

**Kilometre Performance**

**% Kilometres Operated**



Date Range / Period	11	12	13	1	2	3	4	5	6	7	8	9	10
03/01/09 to 08/01/10	98.56	90.90	96.90	97.15	98.69	98.04	98.91	98.78	98.56	97.95	97.58	98.15	95.57
05/01/08 to 02/01/09	98.98	99.08	99.35	99.15	98.44	98.99	97.76	98.66	99.51	99.28	99.00	98.58	99.34
Min Standard	98.00	98.00	98.00	98.00	98.00	98.00	98.00	98.00	98.00	98.00	98.00	98.00	98.00

Kilometre figures are based on 4 weeks data