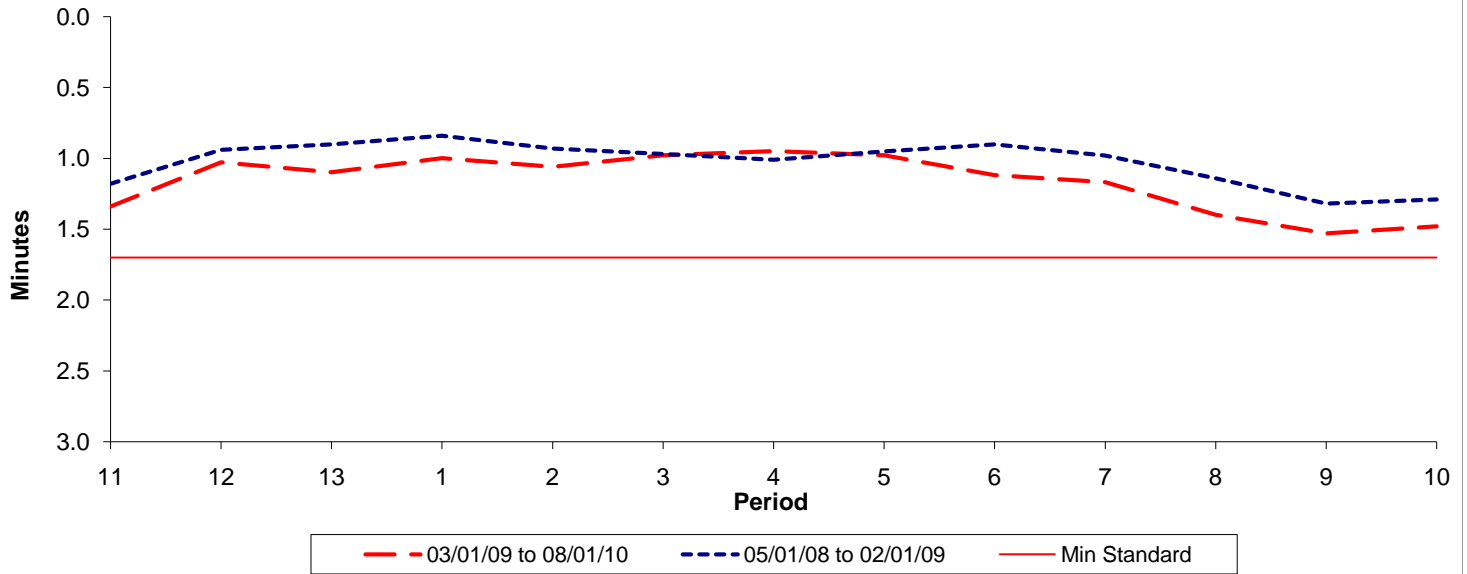




**Reliability Performance ( High Frequency )**

**Excess Waiting Time (minutes)**

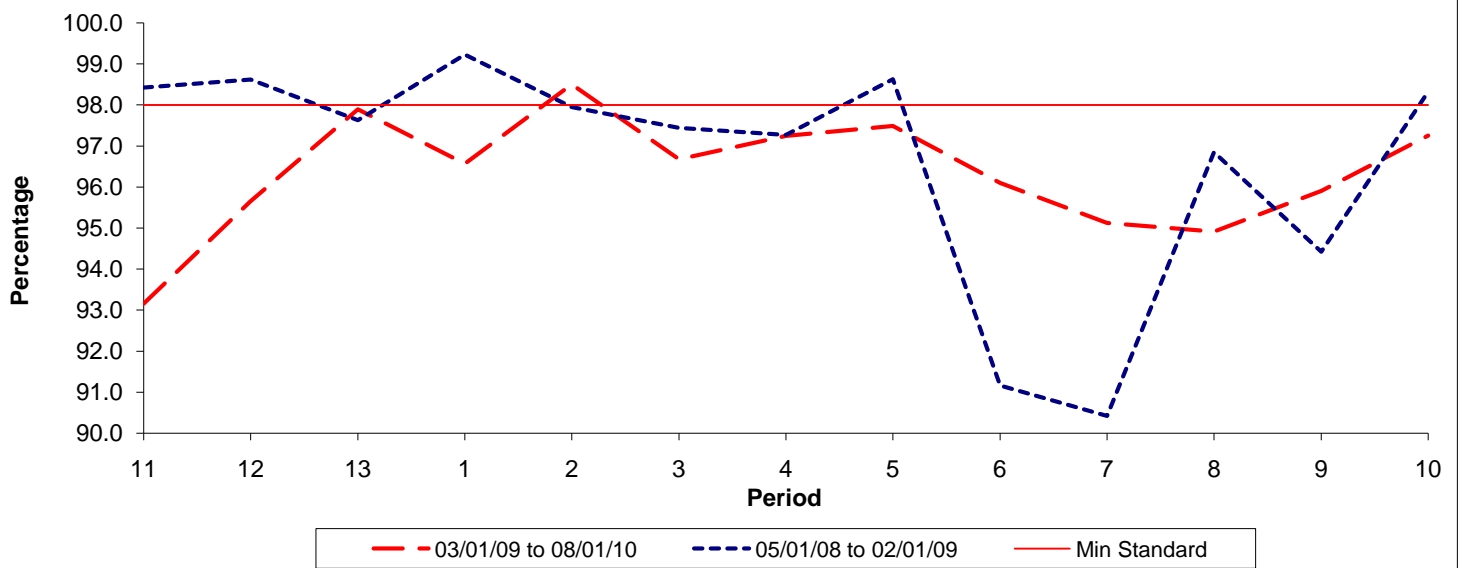


Date Range / Period	11	12	13	1	2	3	4	5	6	7	8	9	10
03/01/09 to 08/01/10	1.34	1.03	1.10	1.00	1.06	0.98	0.95	0.98	1.12	1.17	1.40	1.53	1.48
05/01/08 to 02/01/09	1.18	0.94	0.90	0.84	0.93	0.97	1.01	0.95	0.90	0.98	1.14	1.32	1.29
Min Standard	1.70	1.70	1.70	1.70	1.70	1.70	1.70	1.70	1.70	1.70	1.70	1.70	1.70

Excess Waiting Time figures are based on 12 weeks data

**Kilometre Performance**

**% Kilometres Operated**



Date Range / Period	11	12	13	1	2	3	4	5	6	7	8	9	10
03/01/09 to 08/01/10	93.16	95.65	97.90	96.57	98.51	96.68	97.25	97.49	96.10	95.12	94.92	95.91	97.26
05/01/08 to 02/01/09	98.43	98.62	97.63	99.23	97.95	97.44	97.27	98.63	91.16	90.42	96.85	94.42	98.33
Min Standard	98.00	98.00	98.00	98.00	98.00	98.00	98.00	98.00	98.00	98.00	98.00	98.00	98.00

Kilometre figures are based on 4 weeks data