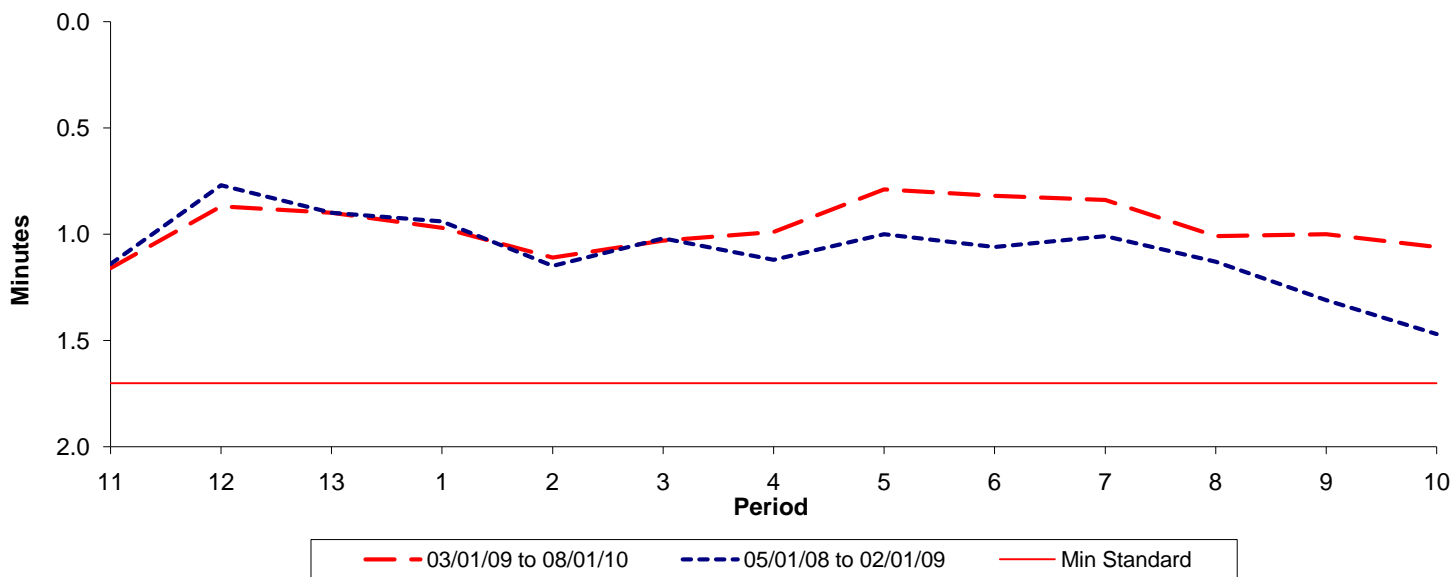




**Reliability Performance ( High Frequency )**

**Excess Waiting Time (minutes)**

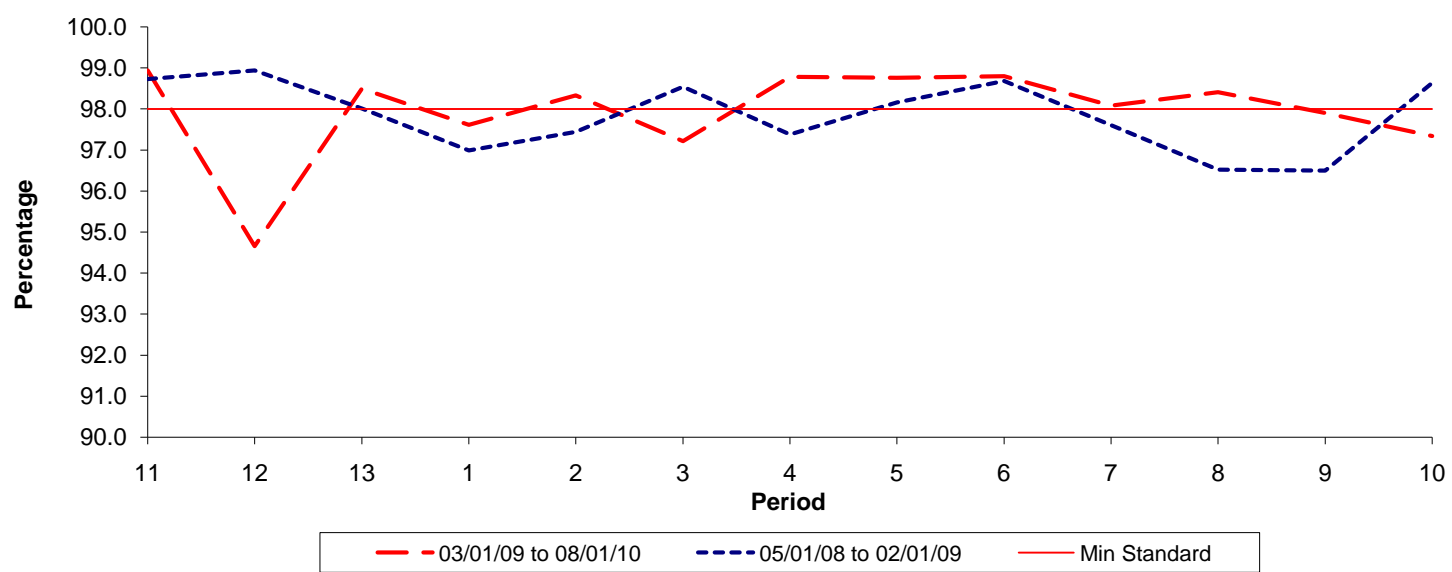


Date Range / Period	11	12	13	1	2	3	4	5	6	7	8	9	10
03/01/09 to 08/01/10	1.16	0.87	0.90	0.97	1.11	1.03	0.99	0.79	0.82	0.84	1.01	1.00	1.06
05/01/08 to 02/01/09	1.14	0.77	0.90	0.94	1.15	1.02	1.12	1.00	1.06	1.01	1.13	1.31	1.47
Min Standard	1.70	1.70	1.70	1.70	1.70	1.70	1.70	1.70	1.70	1.70	1.70	1.70	1.70

Excess Waiting Time figures are based on 12 weeks data

**Kilometre Performance**

**% Kilometres Operated**



Date Range / Period	11	12	13	1	2	3	4	5	6	7	8	9	10
03/01/09 to 08/01/10	98.94	94.66	98.50	97.62	98.34	97.22	98.79	98.76	98.80	98.09	98.41	97.90	97.34
05/01/08 to 02/01/09	98.73	98.94	98.01	96.99	97.44	98.54	97.38	98.16	98.68	97.61	96.52	96.50	98.63
Min Standard	98.00	98.00	98.00	98.00	98.00	98.00	98.00	98.00	98.00	98.00	98.00	98.00	98.00

Kilometre figures are based on 4 weeks data