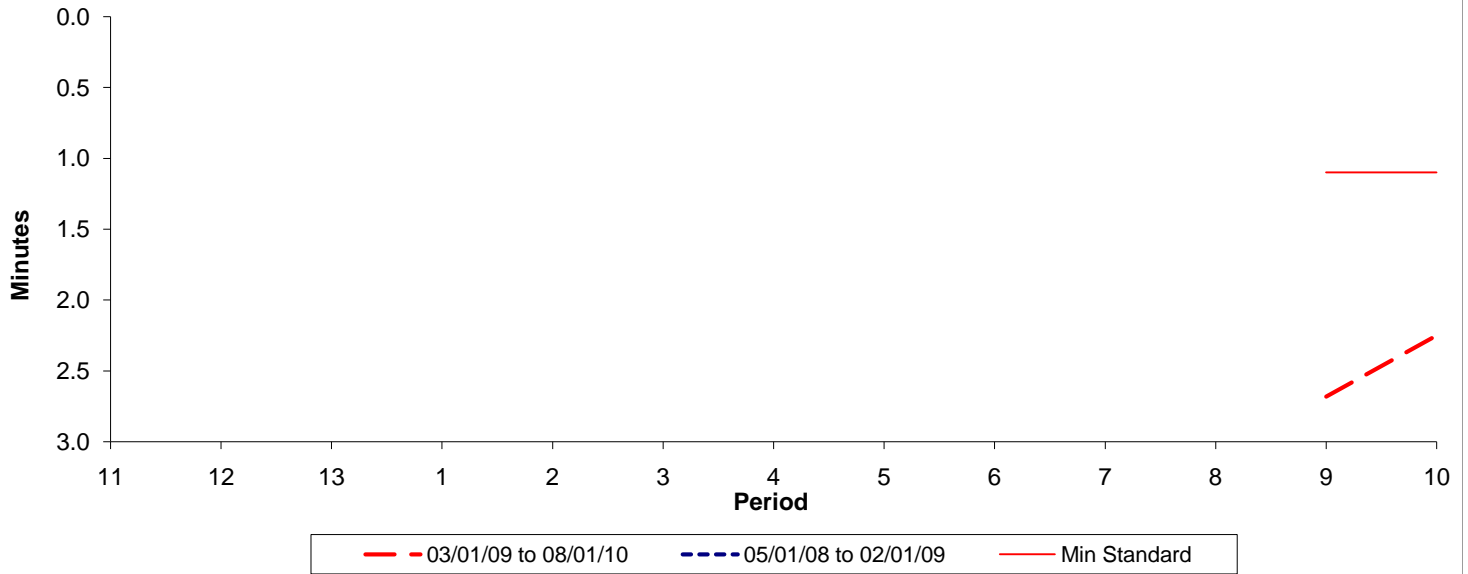




**Reliability Performance ( High Frequency )**

**Excess Waiting Time (minutes)**

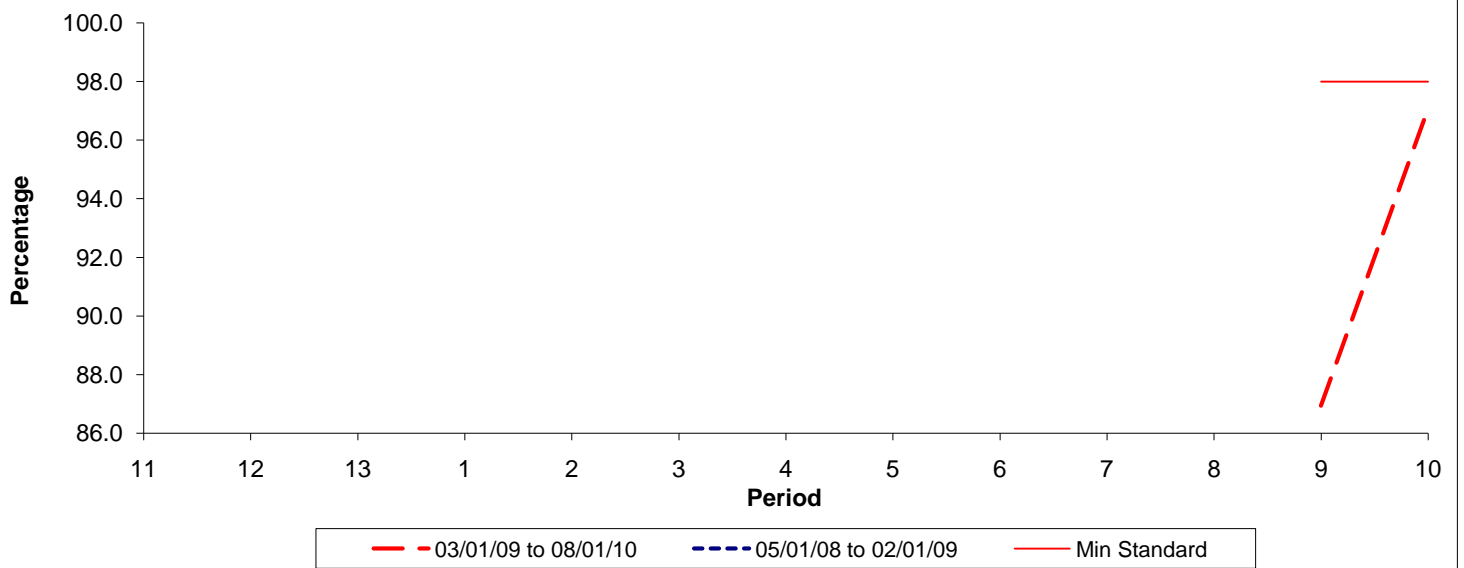


Date Range / Period	11	12	13	1	2	3	4	5	6	7	8	9	10
03/01/09 to 08/01/10												2.68	2.25
05/01/08 to 02/01/09												1.10	1.10
Min Standard												1.10	1.10

Excess Waiting Time figures are based on 12 weeks data

**Kilometre Performance**

**% Kilometres Operated**



Date Range / Period	11	12	13	1	2	3	4	5	6	7	8	9	10
03/01/09 to 08/01/10												86.93	97.08
05/01/08 to 02/01/09												98.00	98.00
Min Standard												98.00	98.00

Kilometre figures are based on 4 weeks data