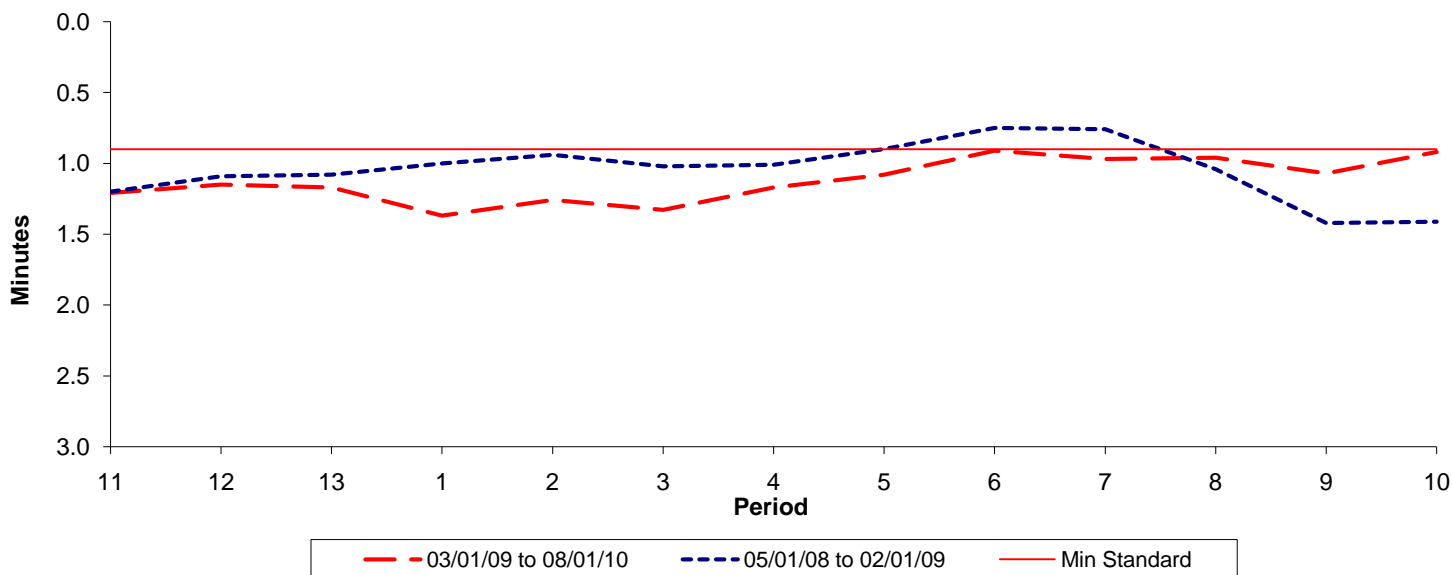




**Reliability Performance ( High Frequency )**

**Excess Waiting Time (minutes)**

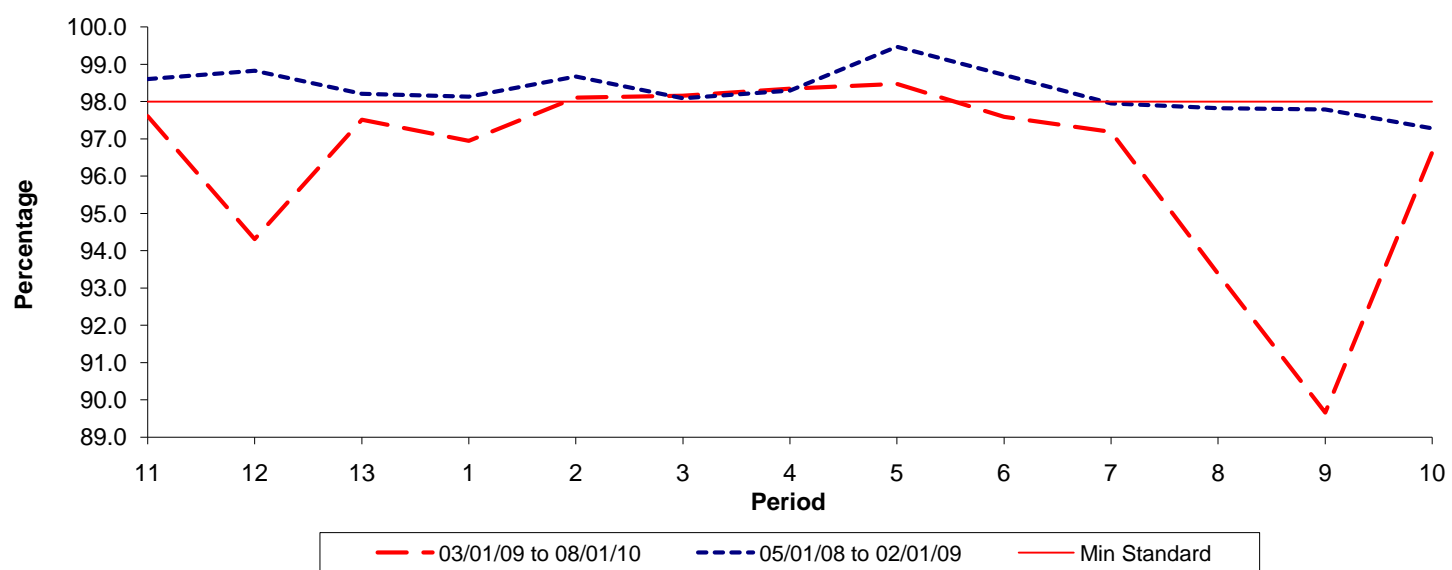


Date Range / Period	11	12	13	1	2	3	4	5	6	7	8	9	10
03/01/09 to 08/01/10	1.21	1.15	1.17	1.37	1.26	1.33	1.17	1.08	0.91	0.97	0.96	1.07	0.92
05/01/08 to 02/01/09	1.20	1.09	1.08	1.00	0.94	1.02	1.01	0.90	0.75	0.76	1.04	1.42	1.41
Min Standard	0.90	0.90	0.90	0.90	0.90	0.90	0.90	0.90	0.90	0.90	0.90	0.90	0.90

Excess Waiting Time figures are based on 12 weeks data

**Kilometre Performance**

**% Kilometres Operated**



Date Range / Period	11	12	13	1	2	3	4	5	6	7	8	9	10
03/01/09 to 08/01/10	97.60	94.31	97.51	96.94	98.10	98.15	98.34	98.47	97.59	97.18	93.38	89.66	96.63
05/01/08 to 02/01/09	98.60	98.83	98.21	98.13	98.67	98.09	98.29	99.47	98.71	97.95	97.82	97.79	97.28
Min Standard	98.00	98.00	98.00	98.00	98.00	98.00	98.00	98.00	98.00	98.00	98.00	98.00	98.00

Kilometre figures are based on 4 weeks data