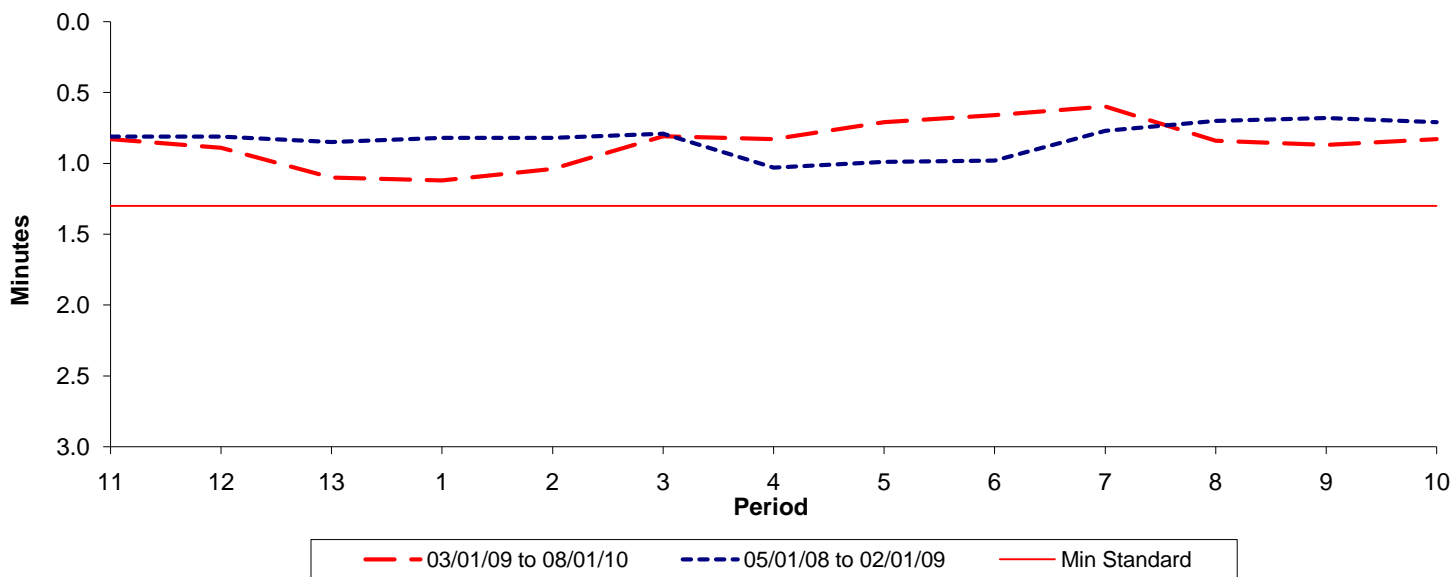




Reliability Performance (High Frequency)

Excess Waiting Time (minutes)

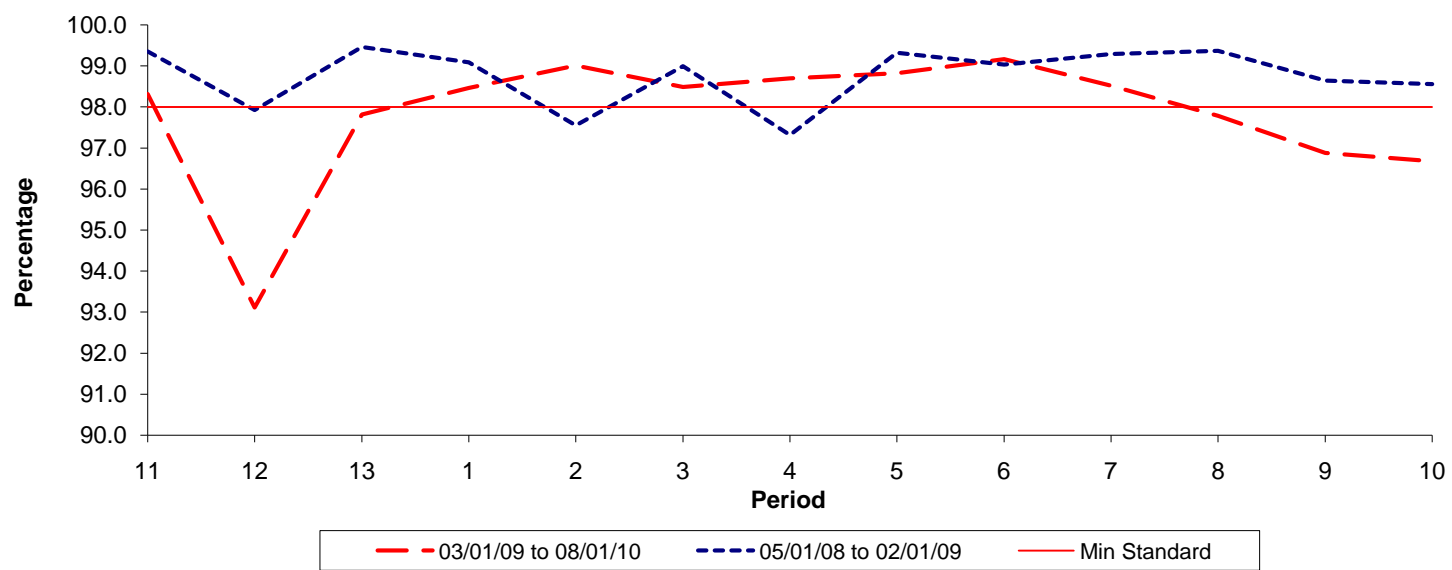


Date Range / Period	11	12	13	1	2	3	4	5	6	7	8	9	10
03/01/09 to 08/01/10	0.83	0.89	1.10	1.12	1.04	0.81	0.83	0.71	0.66	0.60	0.84	0.87	0.83
05/01/08 to 02/01/09	0.81	0.81	0.85	0.82	0.82	0.79	1.03	0.99	0.98	0.77	0.70	0.68	0.71
Min Standard	1.30	1.30	1.30	1.30	1.30	1.30	1.30	1.30	1.30	1.30	1.30	1.30	1.30

Excess Waiting Time figures are based on 12 weeks data

Kilometre Performance

% Kilometres Operated



Date Range / Period	11	12	13	1	2	3	4	5	6	7	8	9	10
03/01/09 to 08/01/10	98.32	93.11	97.82	98.47	99.01	98.49	98.70	98.83	99.17	98.52	97.79	96.88	96.68
05/01/08 to 02/01/09	99.35	97.93	99.46	99.09	97.55	98.99	97.32	99.32	99.03	99.29	99.37	98.64	98.56
Min Standard	98.00	98.00	98.00	98.00	98.00	98.00	98.00	98.00	98.00	98.00	98.00	98.00	98.00

Kilometre figures are based on 4 weeks data