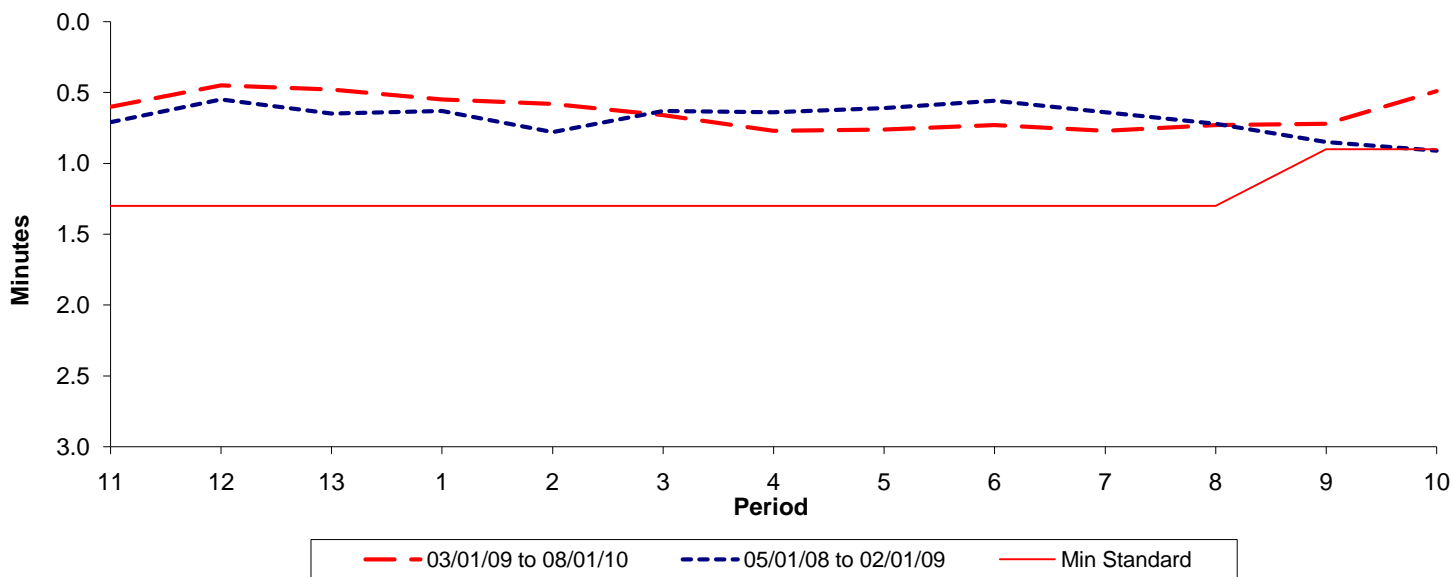




**Reliability Performance ( High Frequency )**

**Excess Waiting Time (minutes)**

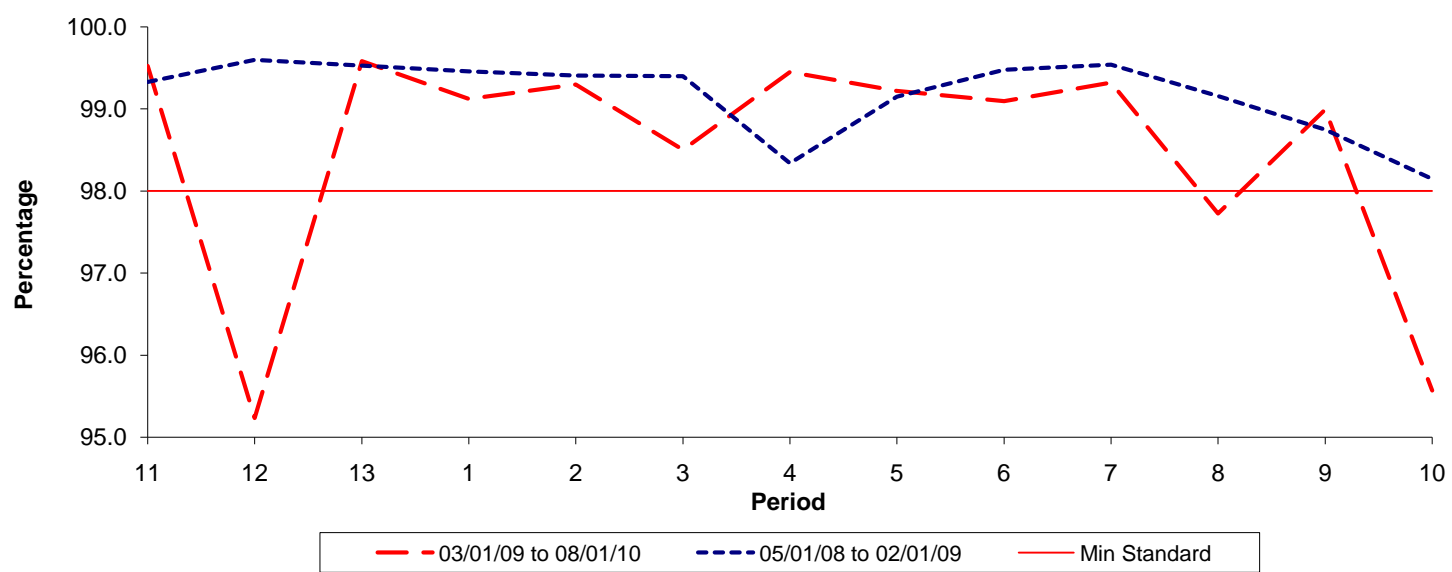


Date Range / Period	11	12	13	1	2	3	4	5	6	7	8	9	10
03/01/09 to 08/01/10	0.60	0.45	0.48	0.55	0.58	0.66	0.77	0.76	0.73	0.77	0.73	0.72	0.49
05/01/08 to 02/01/09	0.71	0.55	0.65	0.63	0.78	0.63	0.64	0.61	0.56	0.64	0.72	0.85	0.91
Min Standard	1.30	1.30	1.30	1.30	1.30	1.30	1.30	1.30	1.30	1.30	1.30	0.90	0.90

Excess Waiting Time figures are based on 12 weeks data

**Kilometre Performance**

**% Kilometres Operated**



Date Range / Period	11	12	13	1	2	3	4	5	6	7	8	9	10
03/01/09 to 08/01/10	99.53	95.23	99.58	99.12	99.30	98.50	99.45	99.22	99.10	99.32	97.73	98.99	95.57
05/01/08 to 02/01/09	99.33	99.60	99.53	99.46	99.41	99.40	98.34	99.15	99.48	99.54	99.16	98.75	98.15
Min Standard	98.00	98.00	98.00	98.00	98.00	98.00	98.00	98.00	98.00	98.00	98.00	98.00	98.00

Kilometre figures are based on 4 weeks data