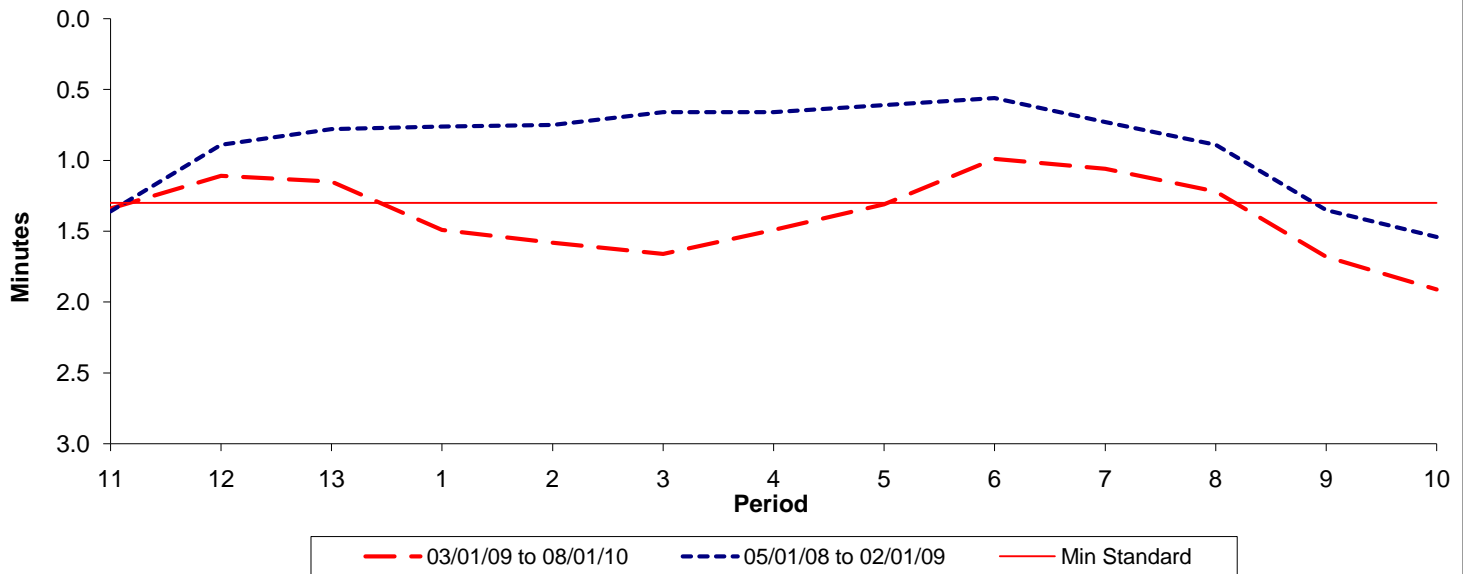




**Reliability Performance ( High Frequency )**

**Excess Waiting Time (minutes)**

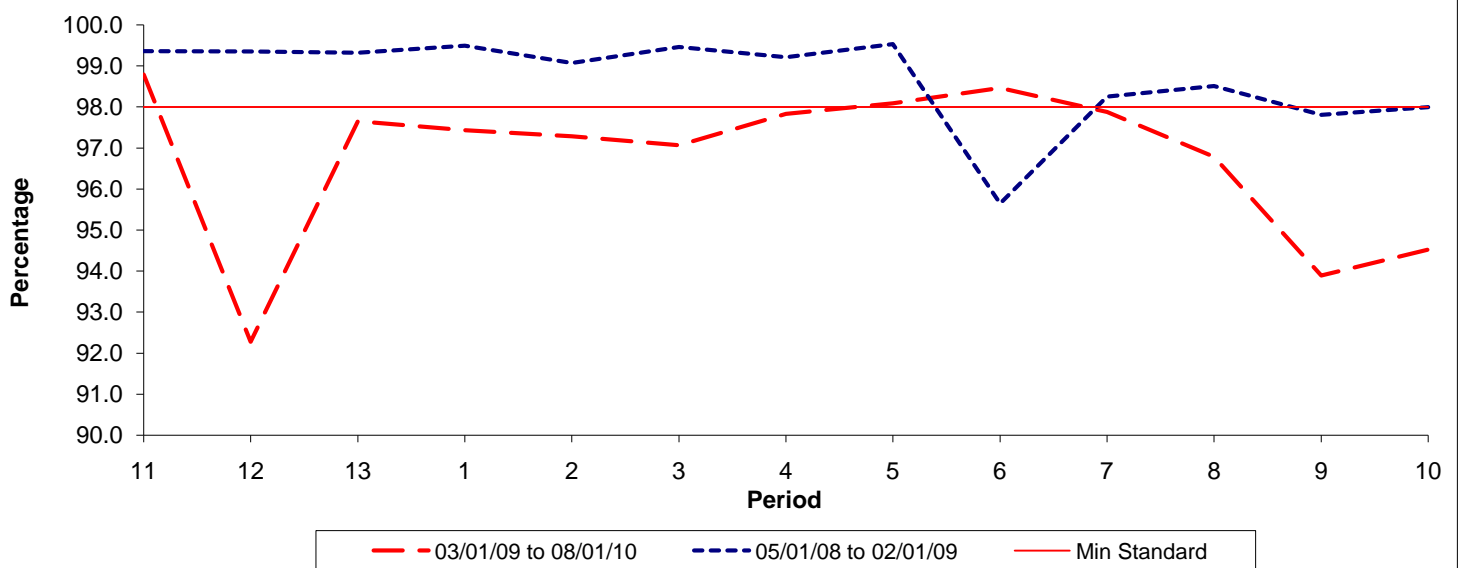


Date Range / Period	11	12	13	1	2	3	4	5	6	7	8	9	10
03/01/09 to 08/01/10	1.34	1.11	1.15	1.49	1.58	1.66	1.49	1.31	0.99	1.06	1.22	1.68	1.91
05/01/08 to 02/01/09	1.36	0.89	0.78	0.76	0.75	0.66	0.66	0.61	0.56	0.73	0.89	1.35	1.54
Min Standard	1.30	1.30	1.30	1.30	1.30	1.30	1.30	1.30	1.30	1.30	1.30	1.30	1.30

Excess Waiting Time figures are based on 12 weeks data

**Kilometre Performance**

**% Kilometres Operated**



Date Range / Period	11	12	13	1	2	3	4	5	6	7	8	9	10
03/01/09 to 08/01/10	98.79	92.27	97.65	97.43	97.28	97.06	97.83	98.09	98.46	97.88	96.78	93.89	94.52
05/01/08 to 02/01/09	99.36	99.35	99.32	99.49	99.07	99.46	99.21	99.53	95.65	98.25	98.51	97.81	98.00
Min Standard	98.00	98.00	98.00	98.00	98.00	98.00	98.00	98.00	98.00	98.00	98.00	98.00	98.00

Kilometre figures are based on 4 weeks data