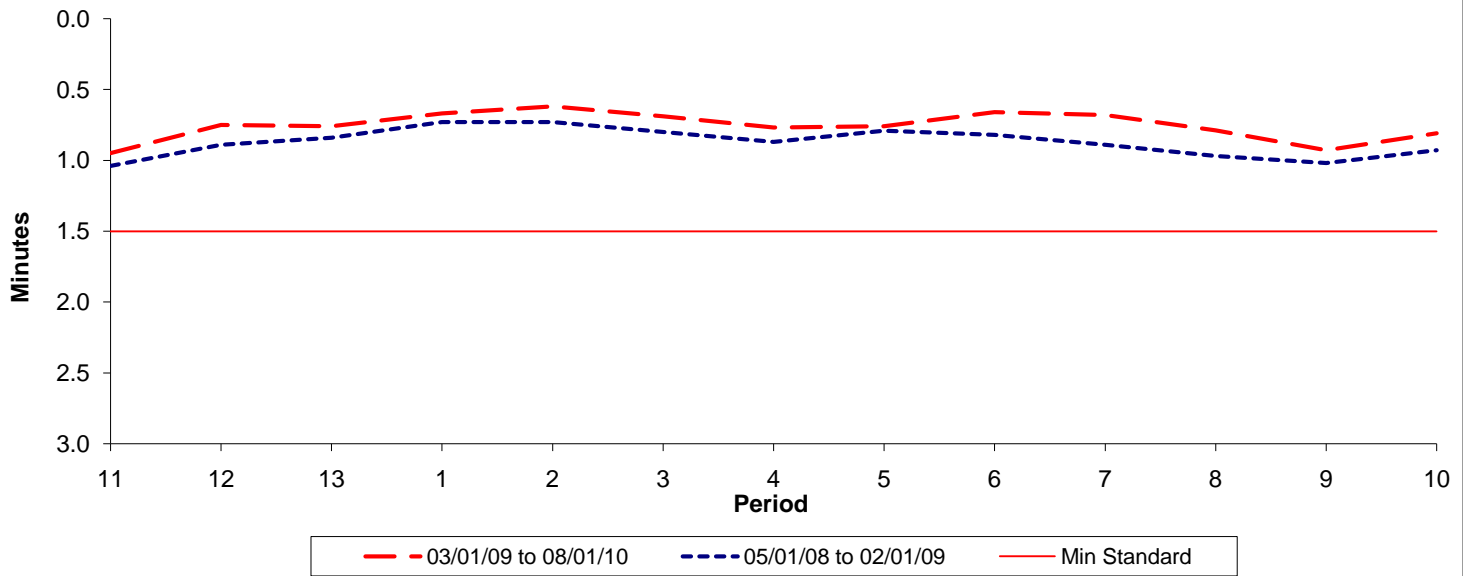




Reliability Performance (High Frequency)

Excess Waiting Time (minutes)

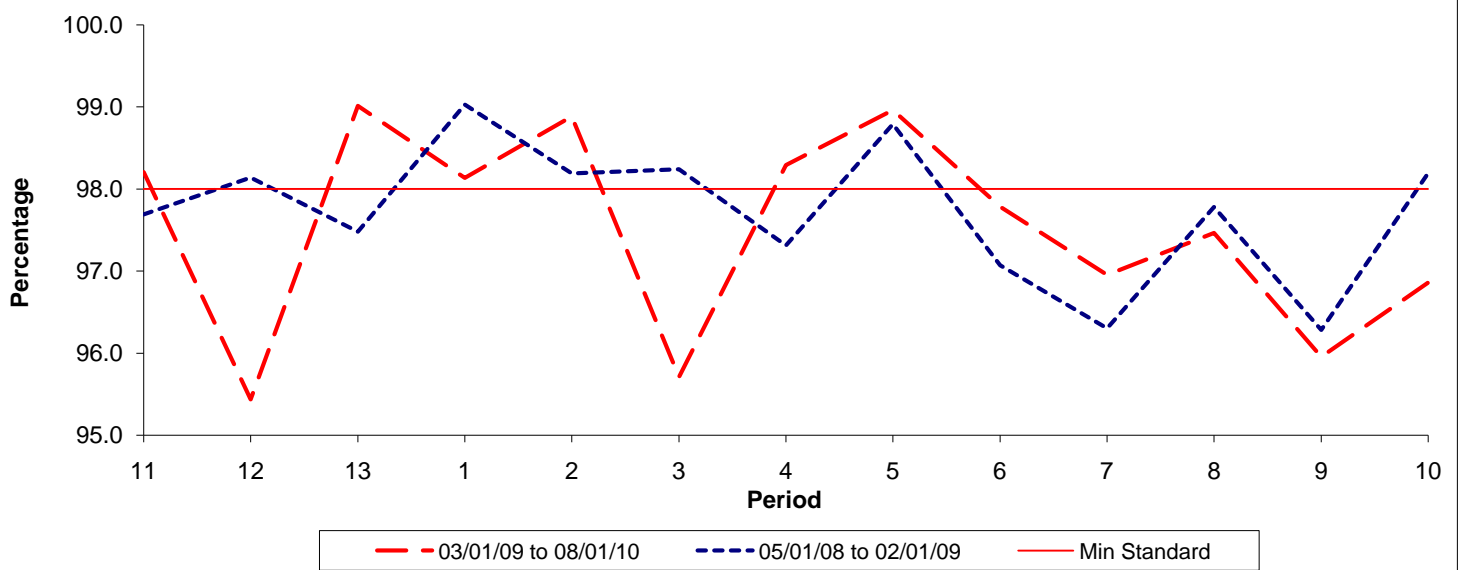


Date Range / Period	11	12	13	1	2	3	4	5	6	7	8	9	10
03/01/09 to 08/01/10	0.95	0.75	0.76	0.67	0.62	0.69	0.77	0.76	0.66	0.68	0.79	0.93	0.81
05/01/08 to 02/01/09	1.04	0.89	0.84	0.73	0.73	0.80	0.87	0.79	0.82	0.89	0.97	1.02	0.93
Min Standard	1.50	1.50	1.50	1.50	1.50	1.50	1.50	1.50	1.50	1.50	1.50	1.50	1.50

Excess Waiting Time figures are based on 12 weeks data

Kilometre Performance

% Kilometres Operated



Date Range / Period	11	12	13	1	2	3	4	5	6	7	8	9	10
03/01/09 to 08/01/10	98.21	95.43	99.01	98.14	98.88	95.71	98.29	98.96	97.78	96.95	97.46	95.96	96.86
05/01/08 to 02/01/09	97.69	98.14	97.48	99.03	98.19	98.24	97.31	98.79	97.07	96.30	97.78	96.28	98.19
Min Standard	98.00	98.00	98.00	98.00	98.00	98.00	98.00	98.00	98.00	98.00	98.00	98.00	98.00

Kilometre figures are based on 4 weeks data