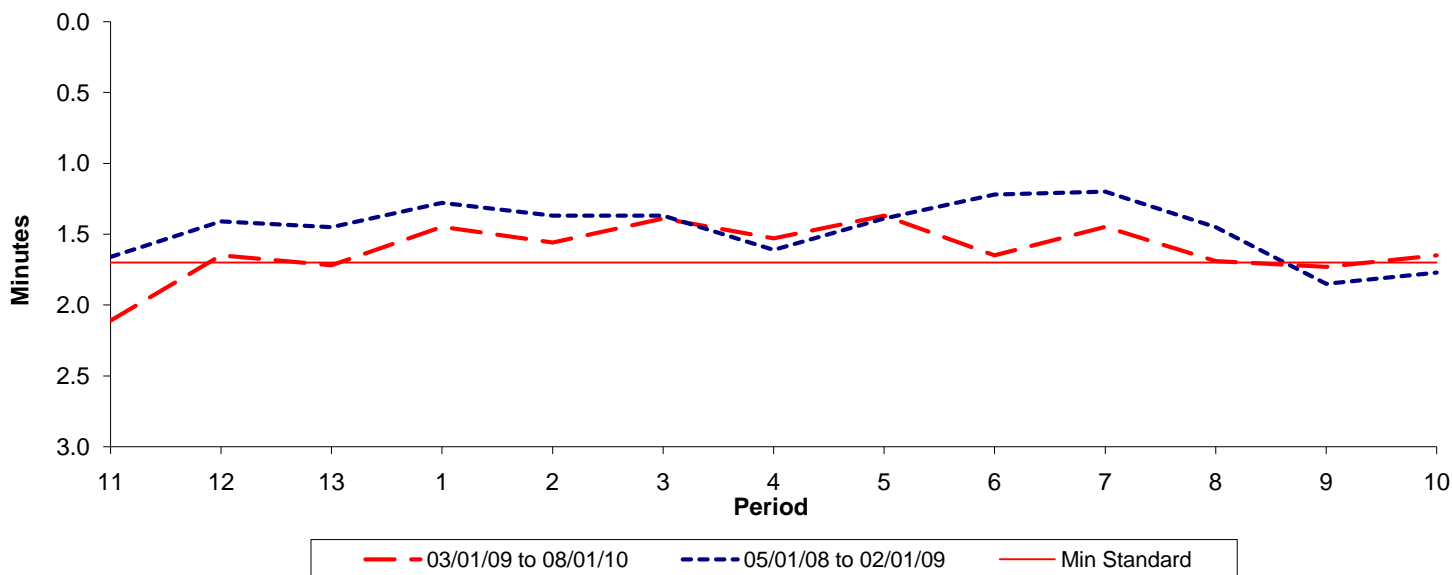




**Reliability Performance ( High Frequency )**

**Excess Waiting Time (minutes)**

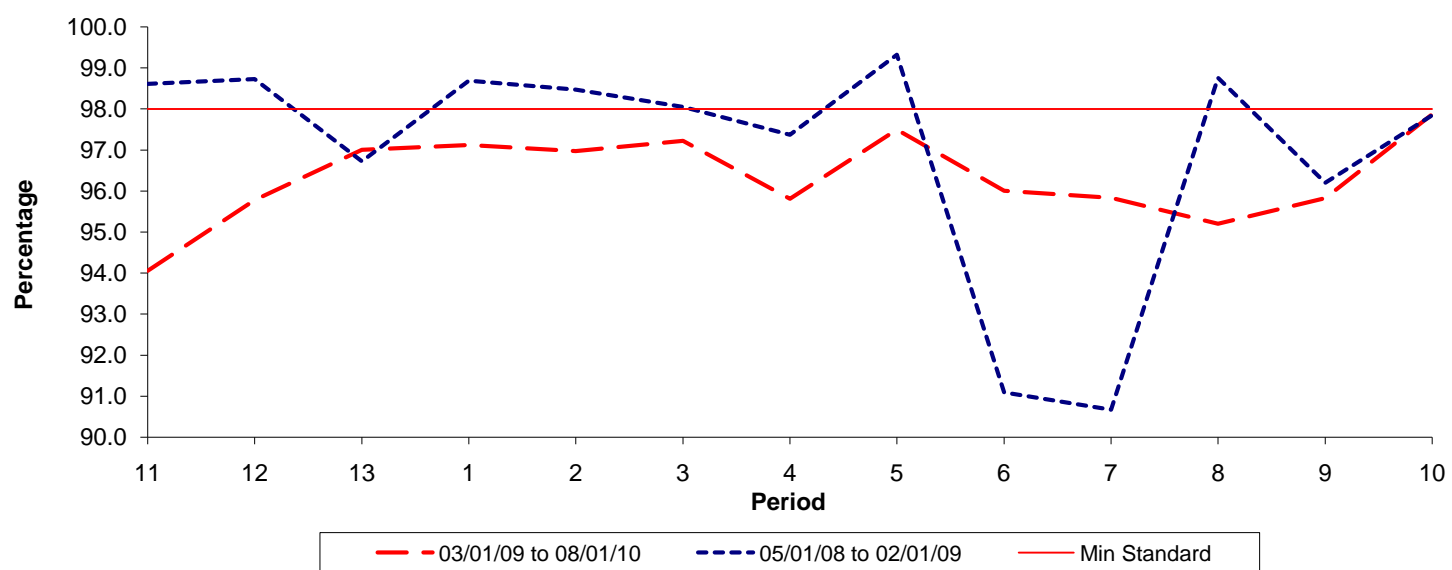


Date Range / Period	11	12	13	1	2	3	4	5	6	7	8	9	10
03/01/09 to 08/01/10	2.11	1.65	1.72	1.45	1.56	1.39	1.53	1.37	1.65	1.45	1.69	1.73	1.65
05/01/08 to 02/01/09	1.66	1.41	1.45	1.28	1.37	1.37	1.61	1.39	1.22	1.20	1.45	1.85	1.77
Min Standard	1.70	1.70	1.70	1.70	1.70	1.70	1.70	1.70	1.70	1.70	1.70	1.70	1.70

Excess Waiting Time figures are based on 12 weeks data

**Kilometre Performance**

**% Kilometres Operated**



Date Range / Period	11	12	13	1	2	3	4	5	6	7	8	9	10
03/01/09 to 08/01/10	94.06	95.78	97.00	97.12	96.98	97.22	95.81	97.50	96.01	95.83	95.20	95.82	97.87
05/01/08 to 02/01/09	98.61	98.73	96.72	98.69	98.47	98.05	97.37	99.32	91.09	90.67	98.76	96.20	97.85
Min Standard	98.00	98.00	98.00	98.00	98.00	98.00	98.00	98.00	98.00	98.00	98.00	98.00	98.00

Kilometre figures are based on 4 weeks data