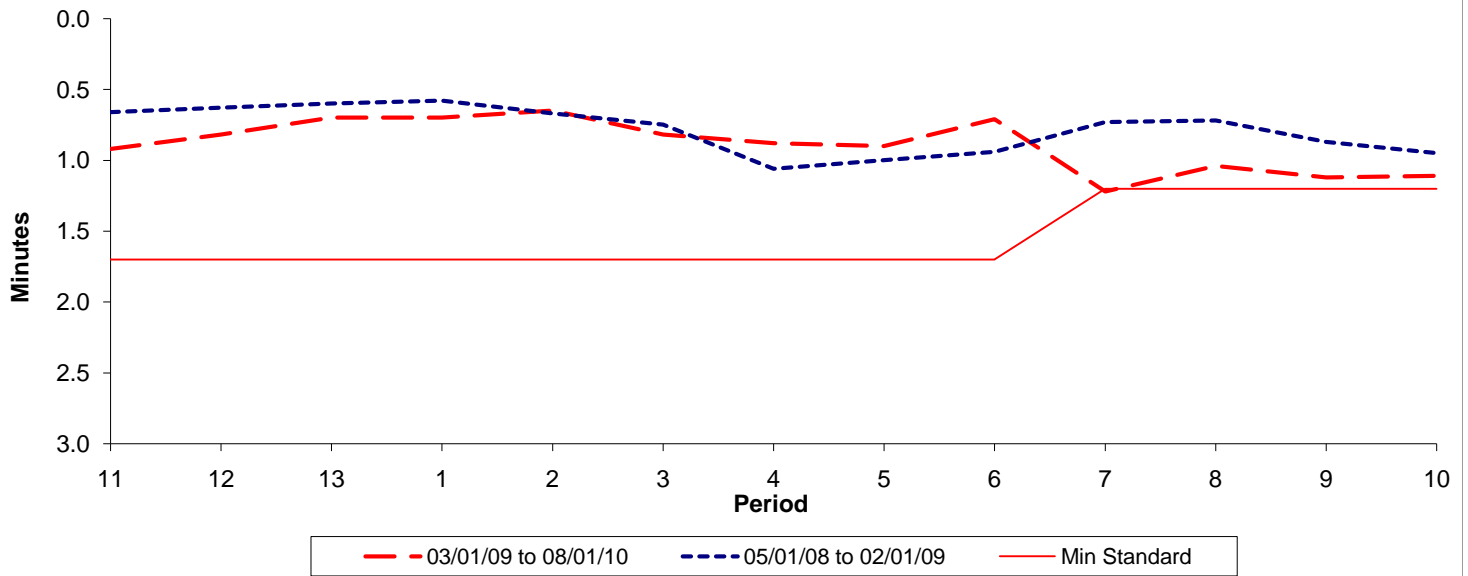




**Reliability Performance ( High Frequency )**

**Excess Waiting Time (minutes)**

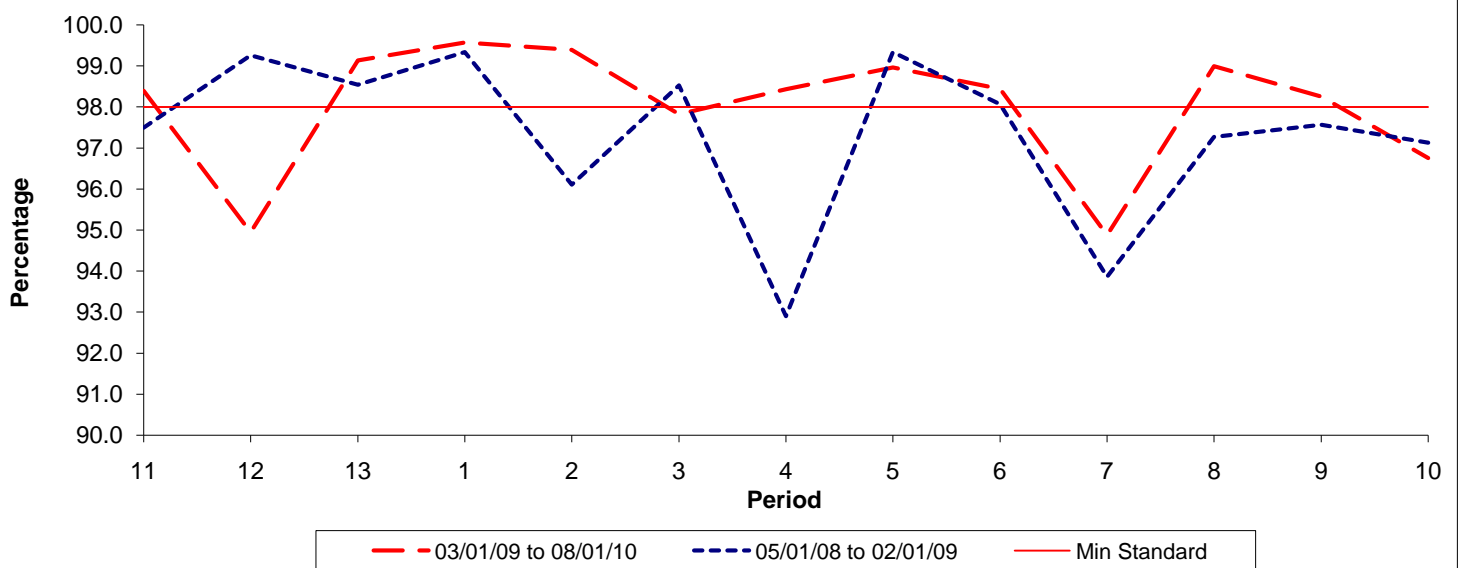


Date Range / Period	11	12	13	1	2	3	4	5	6	7	8	9	10
03/01/09 to 08/01/10	0.92	0.82	0.70	0.70	0.65	0.82	0.88	0.90	0.71	1.22	1.04	1.12	1.11
05/01/08 to 02/01/09	0.66	0.63	0.60	0.58	0.67	0.75	1.06	1.00	0.94	0.73	0.72	0.87	0.95
Min Standard	1.70	1.70	1.70	1.70	1.70	1.70	1.70	1.70	1.70	1.20	1.20	1.20	1.20

Excess Waiting Time figures are based on 12 weeks data

**Kilometre Performance**

**% Kilometres Operated**



Date Range / Period	11	12	13	1	2	3	4	5	6	7	8	9	10
03/01/09 to 08/01/10	98.39	94.94	99.13	99.57	99.39	97.82	98.43	98.96	98.44	94.87	98.99	98.25	96.75
05/01/08 to 02/01/09	97.50	99.26	98.54	99.34	96.11	98.53	92.90	99.34	98.07	93.86	97.27	97.57	97.13
Min Standard	98.00	98.00	98.00	98.00	98.00	98.00	98.00	98.00	98.00	98.00	98.00	98.00	98.00

Kilometre figures are based on 4 weeks data