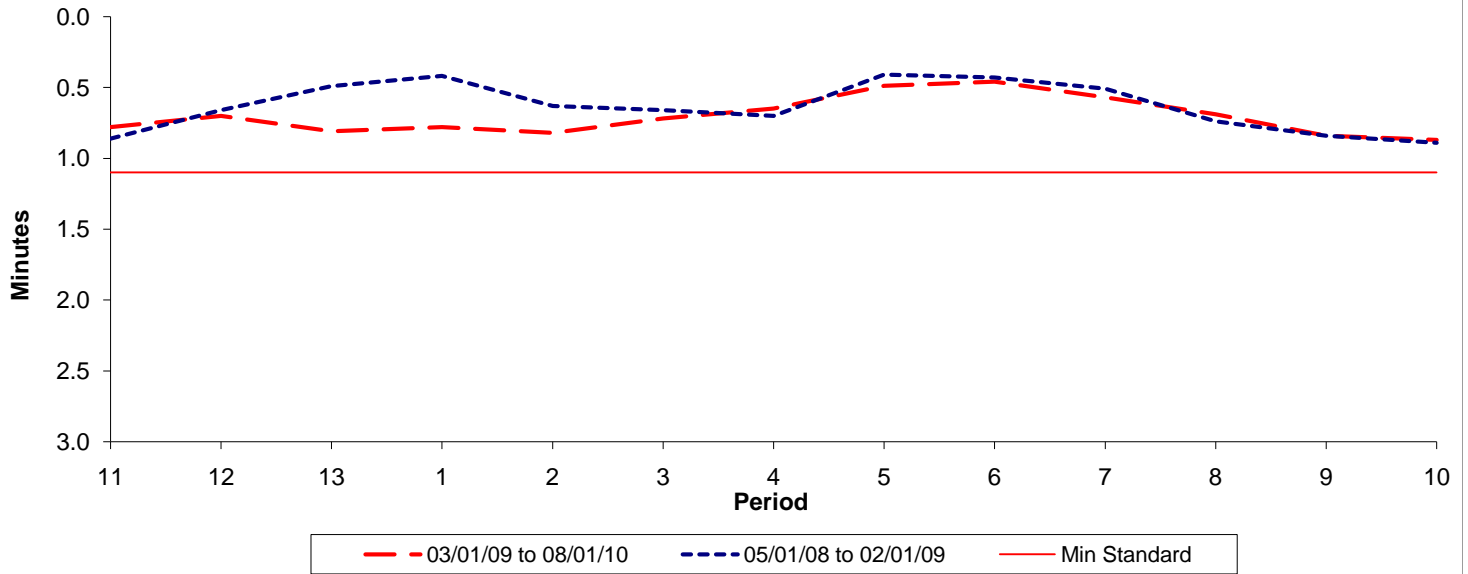




Reliability Performance (High Frequency)

Excess Waiting Time (minutes)

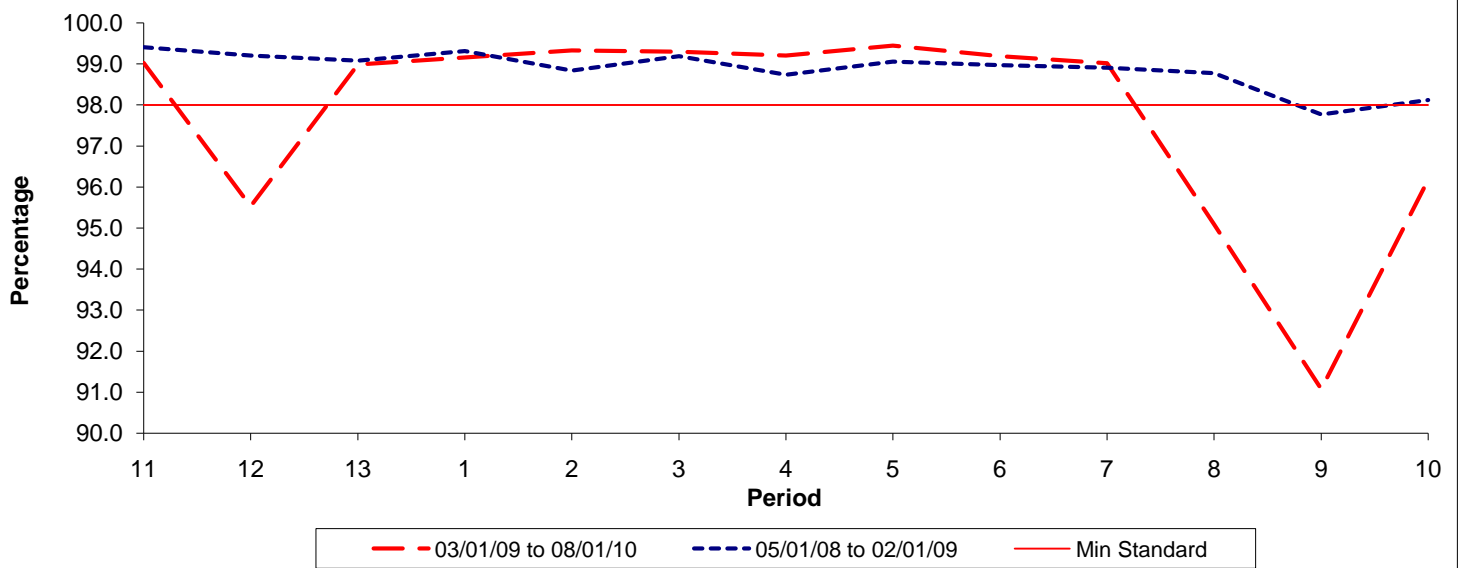


Date Range / Period	11	12	13	1	2	3	4	5	6	7	8	9	10
03/01/09 to 08/01/10	0.78	0.70	0.81	0.78	0.82	0.72	0.65	0.49	0.46	0.57	0.69	0.84	0.87
05/01/08 to 02/01/09	0.86	0.66	0.49	0.42	0.63	0.66	0.70	0.41	0.43	0.51	0.74	0.84	0.89
Min Standard	1.10	1.10	1.10	1.10	1.10	1.10	1.10	1.10	1.10	1.10	1.10	1.10	1.10

Excess Waiting Time figures are based on 12 weeks data

Kilometre Performance

% Kilometres Operated



Date Range / Period	11	12	13	1	2	3	4	5	6	7	8	9	10
03/01/09 to 08/01/10	99.03	95.53	98.99	99.16	99.33	99.30	99.21	99.45	99.19	99.02	95.09	91.07	96.18
05/01/08 to 02/01/09	99.41	99.21	99.08	99.32	98.84	99.19	98.74	99.06	98.97	98.91	98.78	97.77	98.12
Min Standard	98.00	98.00	98.00	98.00	98.00	98.00	98.00	98.00	98.00	98.00	98.00	98.00	98.00

Kilometre figures are based on 4 weeks data