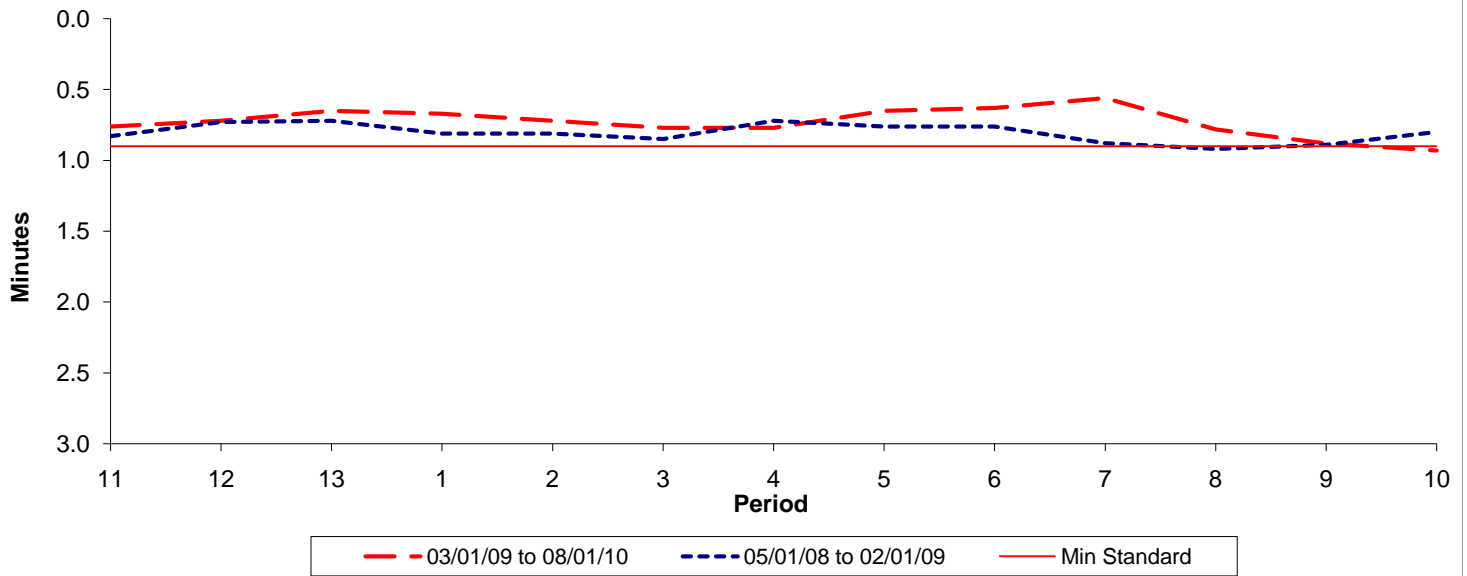




**Reliability Performance ( High Frequency )**

Excess Waiting Time (minutes)

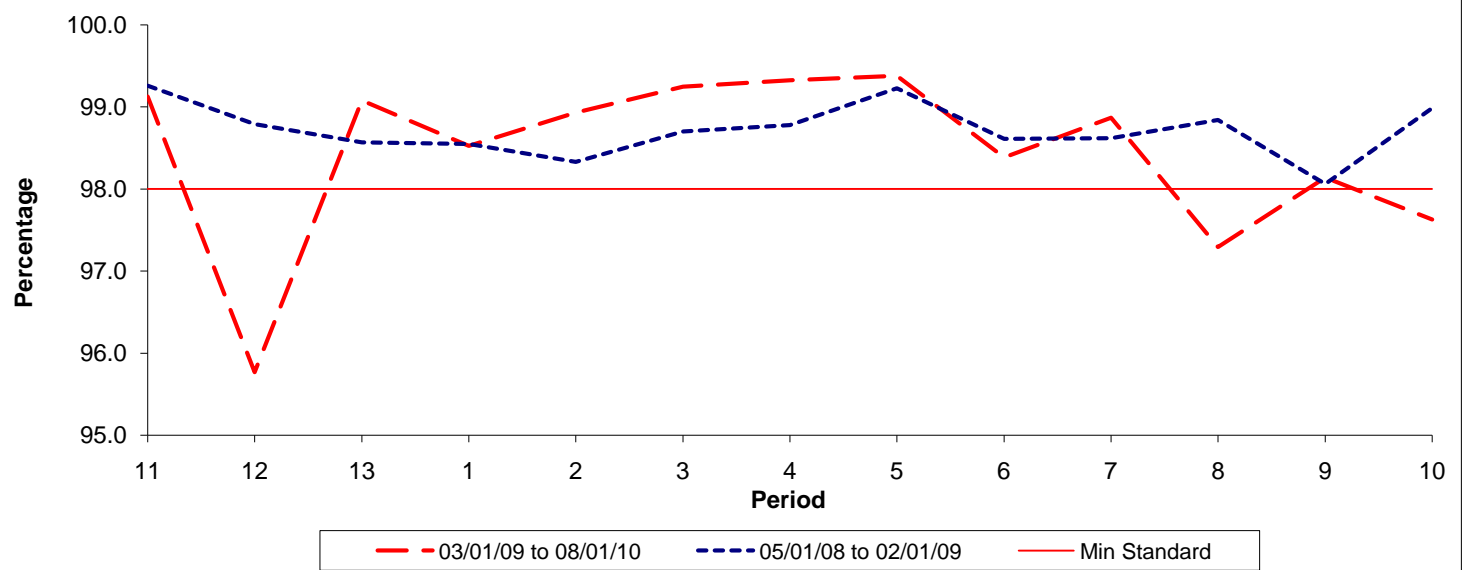


Date Range / Period	11	12	13	1	2	3	4	5	6	7	8	9	10
03/01/09 to 08/01/10	0.76	0.72	0.65	0.67	0.72	0.77	0.77	0.65	0.63	0.56	0.78	0.88	0.93
05/01/08 to 02/01/09	0.83	0.73	0.72	0.81	0.81	0.85	0.72	0.76	0.76	0.88	0.92	0.89	0.80
Min Standard	0.90	0.90	0.90	0.90	0.90	0.90	0.90	0.90	0.90	0.90	0.90	0.90	0.90

Excess Waiting Time figures are based on 12 weeks data

**Kilometre Performance**

% Kilometres Operated



Date Range / Period	11	12	13	1	2	3	4	5	6	7	8	9	10
03/01/09 to 08/01/10	99.13	95.77	99.08	98.53	98.93	99.25	99.33	99.38	98.39	98.87	97.30	98.14	97.63
05/01/08 to 02/01/09	99.26	98.79	98.57	98.55	98.33	98.70	98.78	99.23	98.61	98.62	98.84	98.06	98.99
Min Standard	98.00	98.00	98.00	98.00	98.00	98.00	98.00	98.00	98.00	98.00	98.00	98.00	98.00

Kilometre figures are based on 4 weeks data