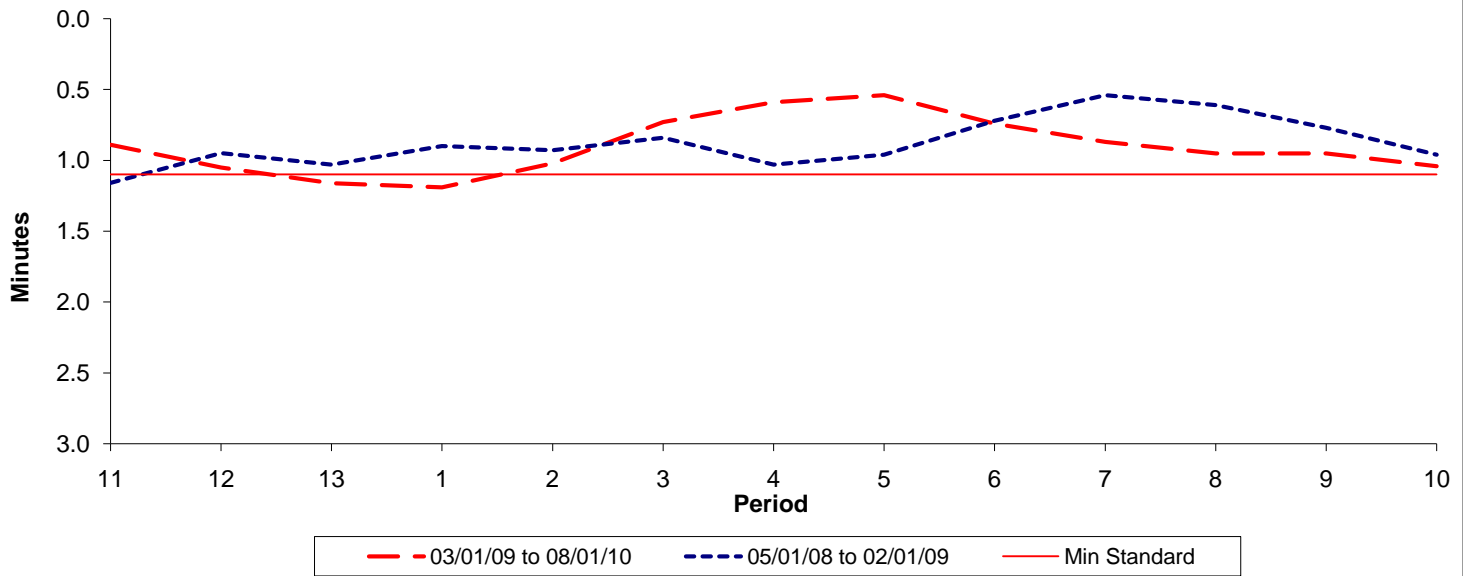




Reliability Performance (High Frequency)

Excess Waiting Time (minutes)

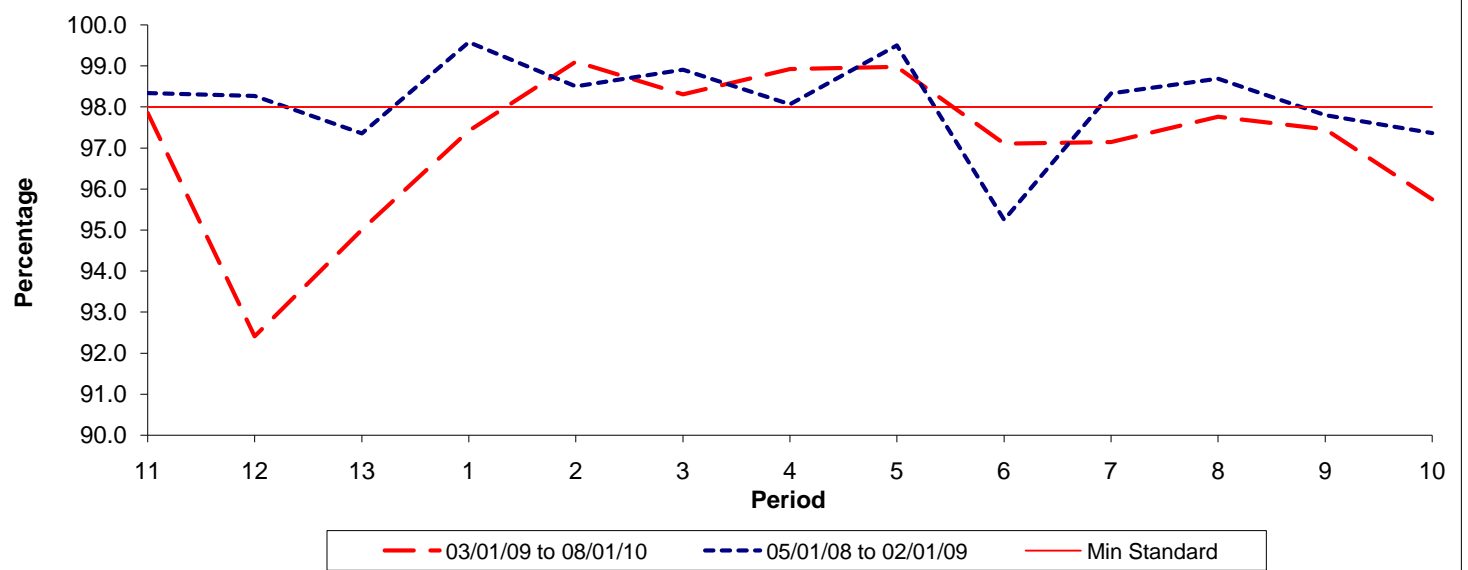


Date Range / Period	11	12	13	1	2	3	4	5	6	7	8	9	10
03/01/09 to 08/01/10	0.89	1.05	1.16	1.19	1.02	0.73	0.59	0.54	0.74	0.87	0.95	0.95	1.04
05/01/08 to 02/01/09	1.16	0.95	1.03	0.90	0.93	0.84	1.03	0.96	0.72	0.54	0.61	0.77	0.96
Min Standard	1.10	1.10	1.10	1.10	1.10	1.10	1.10	1.10	1.10	1.10	1.10	1.10	1.10

Excess Waiting Time figures are based on 12 weeks data

Kilometre Performance

% Kilometres Operated



Date Range / Period	11	12	13	1	2	3	4	5	6	7	8	9	10
03/01/09 to 08/01/10	97.86	92.41	95.01	97.42	99.11	98.31	98.93	98.98	97.10	97.15	97.76	97.46	95.75
05/01/08 to 02/01/09	98.34	98.27	97.36	99.58	98.50	98.91	98.07	99.50	95.25	98.33	98.69	97.80	97.36
Min Standard	98.00	98.00	98.00	98.00	98.00	98.00	98.00	98.00	98.00	98.00	98.00	98.00	98.00

Kilometre figures are based on 4 weeks data