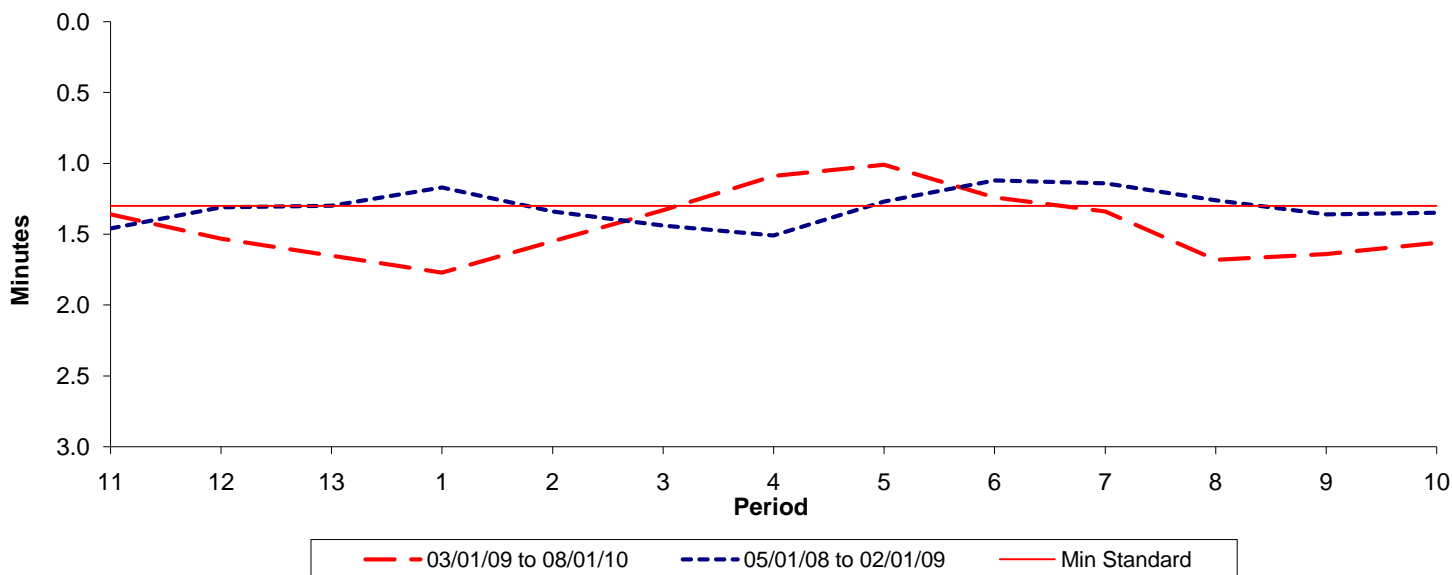




Reliability Performance (High Frequency)

Excess Waiting Time (minutes)

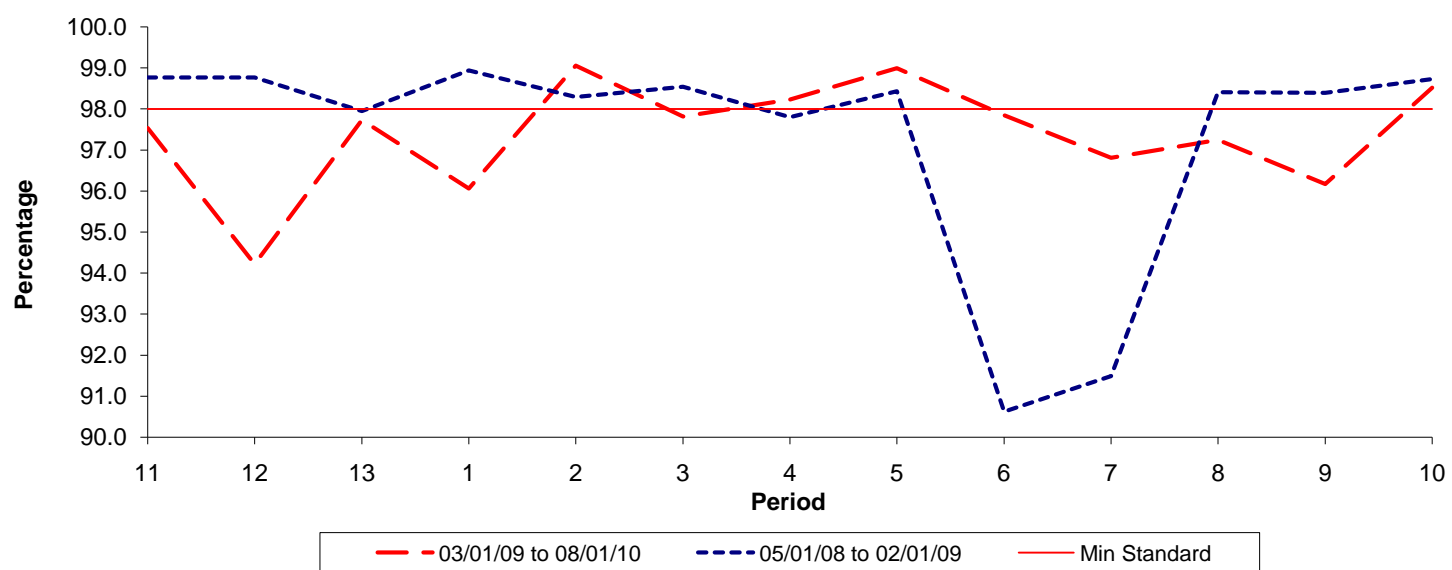


Date Range / Period	11	12	13	1	2	3	4	5	6	7	8	9	10
03/01/09 to 08/01/10	1.36	1.53	1.65	1.77	1.55	1.33	1.09	1.01	1.24	1.34	1.68	1.64	1.56
05/01/08 to 02/01/09	1.46	1.31	1.30	1.17	1.34	1.44	1.51	1.27	1.12	1.14	1.26	1.36	1.35
Min Standard	1.30	1.30	1.30	1.30	1.30	1.30	1.30	1.30	1.30	1.30	1.30	1.30	1.30

Excess Waiting Time figures are based on 12 weeks data

Kilometre Performance

% Kilometres Operated



Date Range / Period	11	12	13	1	2	3	4	5	6	7	8	9	10
03/01/09 to 08/01/10	97.54	94.22	97.73	96.06	99.06	97.82	98.23	99.00	97.85	96.81	97.25	96.17	98.52
05/01/08 to 02/01/09	98.77	98.77	97.95	98.94	98.29	98.54	97.80	98.43	90.62	91.49	98.41	98.39	98.73
Min Standard	98.00	98.00	98.00	98.00	98.00	98.00	98.00	98.00	98.00	98.00	98.00	98.00	98.00

Kilometre figures are based on 4 weeks data