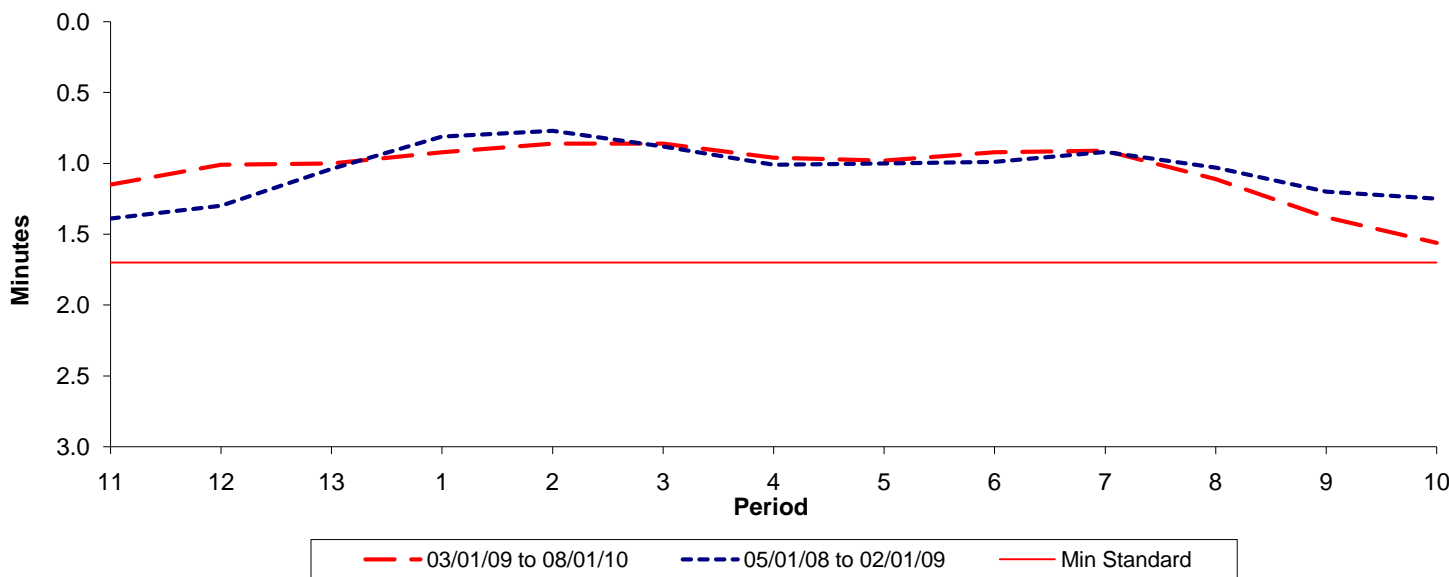




Reliability Performance (High Frequency)

Excess Waiting Time (minutes)

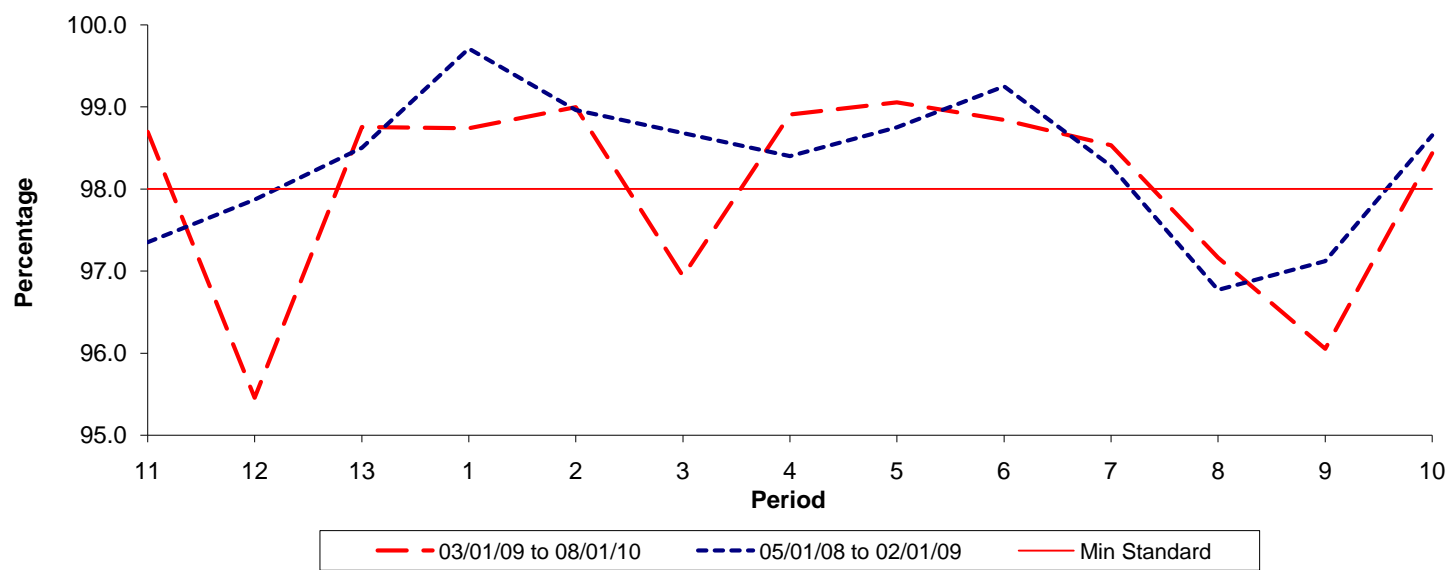


Date Range / Period	11	12	13	1	2	3	4	5	6	7	8	9	10
03/01/09 to 08/01/10	1.15	1.01	1.00	0.92	0.86	0.86	0.96	0.98	0.92	0.91	1.11	1.38	1.56
05/01/08 to 02/01/09	1.39	1.30	1.04	0.81	0.77	0.88	1.01	1.00	0.99	0.92	1.03	1.20	1.25
Min Standard	1.70	1.70	1.70	1.70	1.70	1.70	1.70	1.70	1.70	1.70	1.70	1.70	1.70

Excess Waiting Time figures are based on 12 weeks data

Kilometre Performance

% Kilometres Operated



Date Range / Period	11	12	13	1	2	3	4	5	6	7	8	9	10
03/01/09 to 08/01/10	98.70	95.45	98.76	98.74	99.00	96.94	98.91	99.06	98.84	98.53	97.16	96.05	98.44
05/01/08 to 02/01/09	97.35	97.87	98.50	99.71	98.96	98.68	98.40	98.75	99.25	98.28	96.77	97.12	98.65
Min Standard	98.00	98.00	98.00	98.00	98.00	98.00	98.00	98.00	98.00	98.00	98.00	98.00	98.00

Kilometre figures are based on 4 weeks data