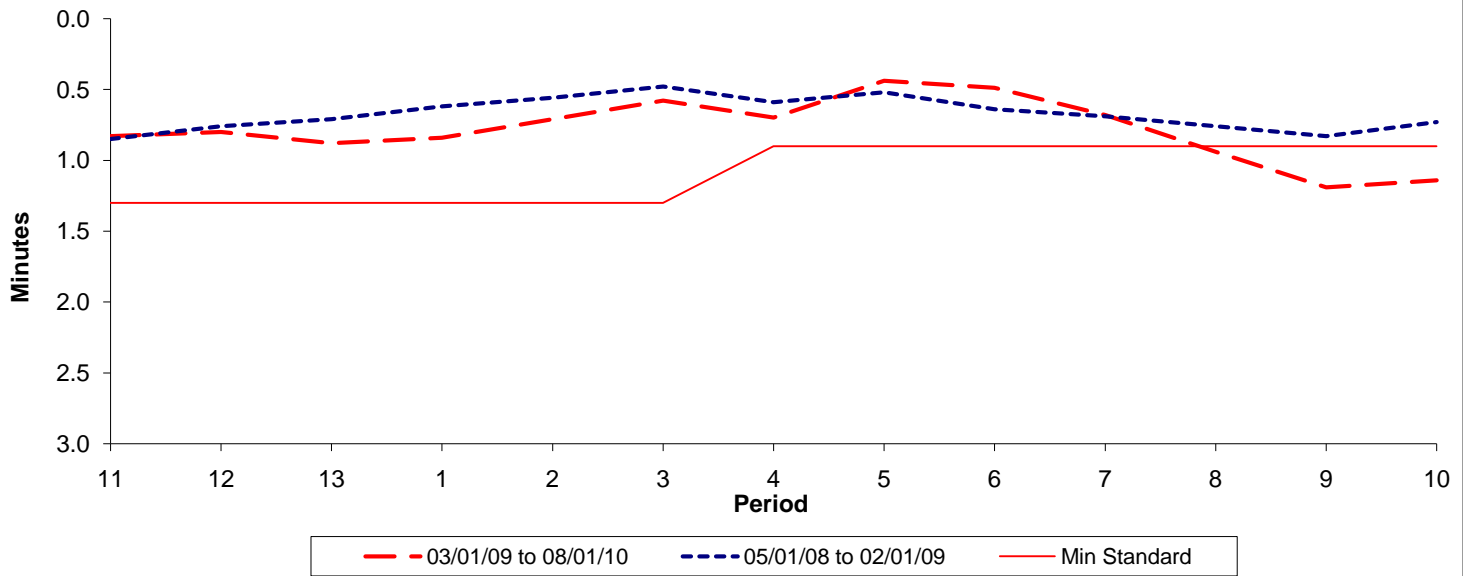




Reliability Performance (High Frequency)

Excess Waiting Time (minutes)

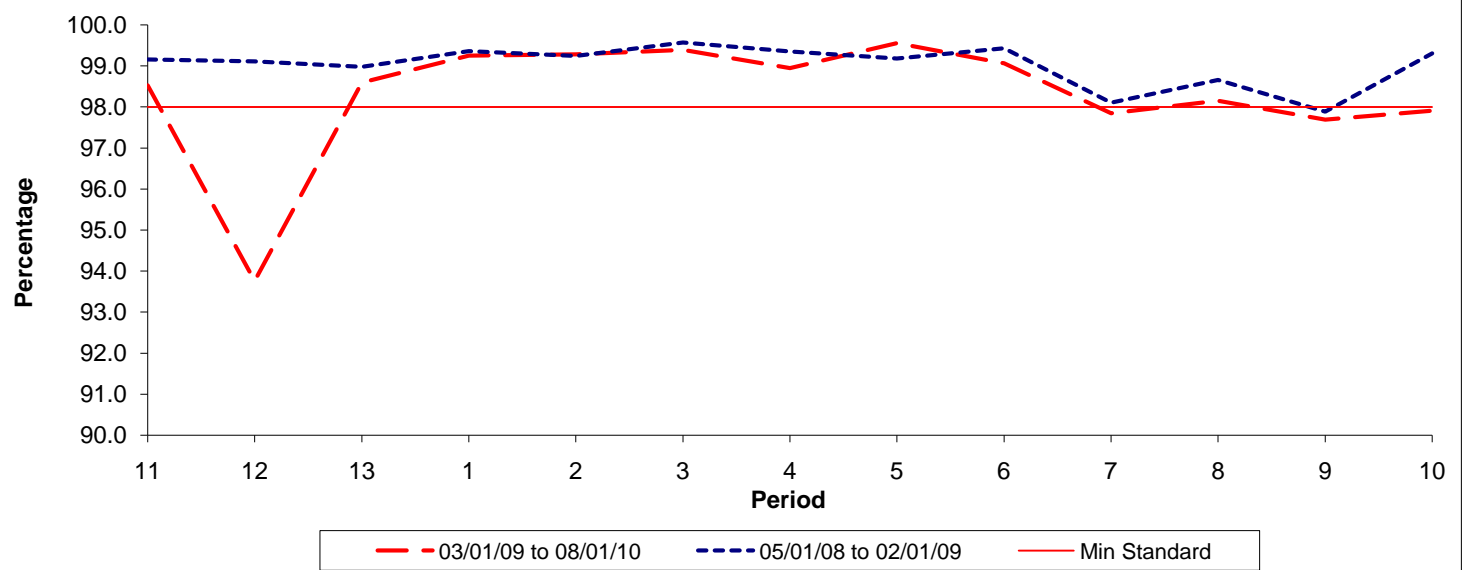


Date Range / Period	11	12	13	1	2	3	4	5	6	7	8	9	10
03/01/09 to 08/01/10	0.83	0.80	0.88	0.84	0.71	0.58	0.70	0.44	0.49	0.68	0.94	1.19	1.14
05/01/08 to 02/01/09	0.85	0.76	0.71	0.62	0.56	0.48	0.59	0.52	0.64	0.69	0.76	0.83	0.73
Min Standard	1.30	1.30	1.30	1.30	1.30	1.30	0.90	0.90	0.90	0.90	0.90	0.90	0.90

Excess Waiting Time figures are based on 12 weeks data

Kilometre Performance

% Kilometres Operated



Date Range / Period	11	12	13	1	2	3	4	5	6	7	8	9	10
03/01/09 to 08/01/10	98.52	93.75	98.60	99.25	99.29	99.39	98.95	99.56	99.06	97.85	98.15	97.69	97.91
05/01/08 to 02/01/09	99.16	99.11	98.98	99.36	99.24	99.57	99.35	99.18	99.43	98.11	98.66	97.89	99.30
Min Standard	98.00	98.00	98.00	98.00	98.00	98.00	98.00	98.00	98.00	98.00	98.00	98.00	98.00

Kilometre figures are based on 4 weeks data