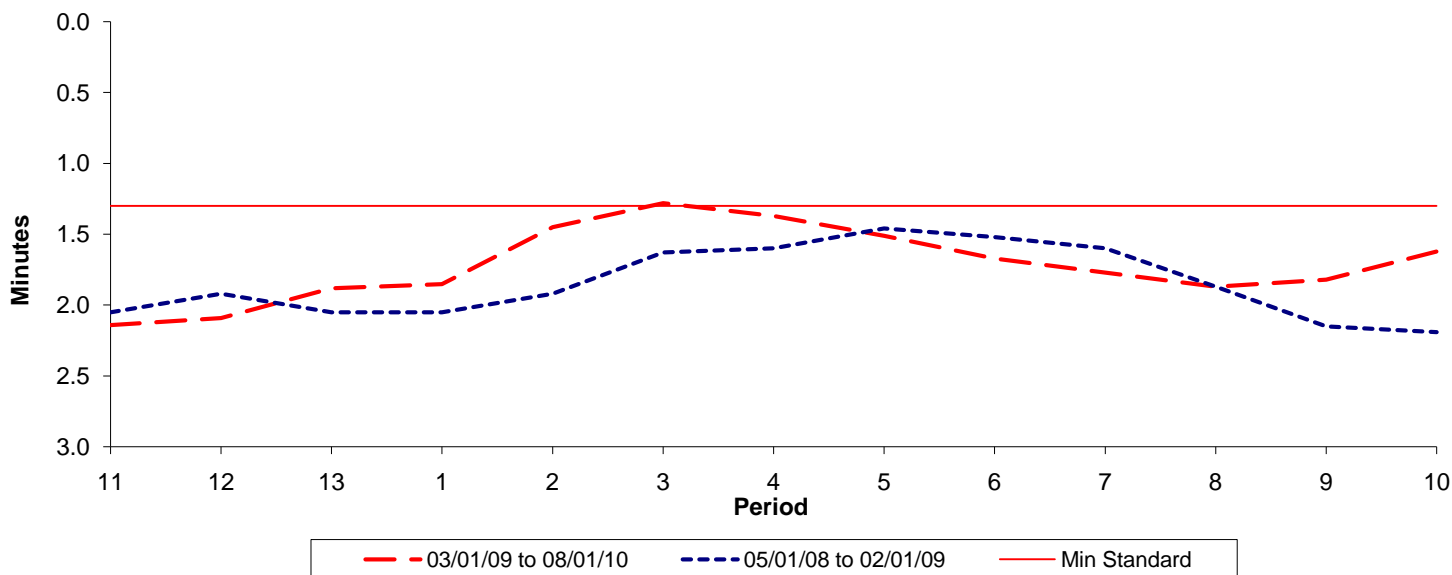




Reliability Performance (High Frequency)

Excess Waiting Time (minutes)

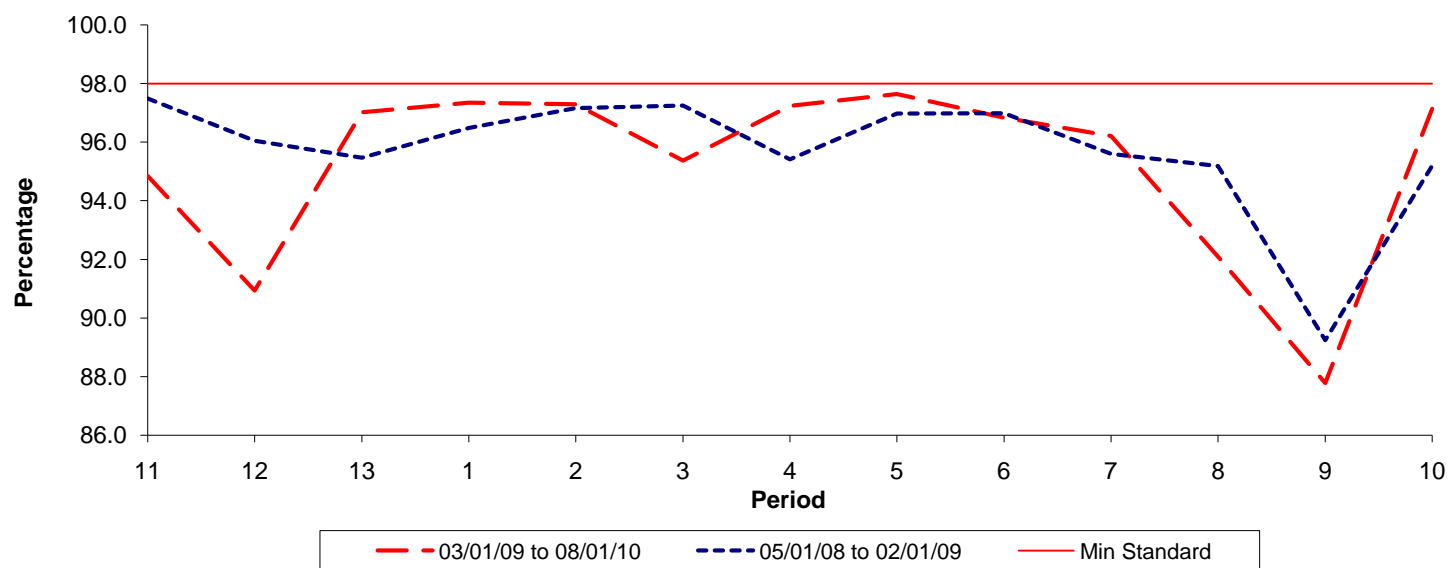


Date Range / Period	11	12	13	1	2	3	4	5	6	7	8	9	10
03/01/09 to 08/01/10	2.14	2.09	1.88	1.85	1.45	1.28	1.37	1.51	1.67	1.77	1.87	1.82	1.62
05/01/08 to 02/01/09	2.05	1.92	2.05	2.05	1.92	1.63	1.60	1.46	1.52	1.60	1.87	2.15	2.19
Min Standard	1.30	1.30	1.30	1.30	1.30	1.30	1.30	1.30	1.30	1.30	1.30	1.30	1.30

Excess Waiting Time figures are based on 12 weeks data

Kilometre Performance

% Kilometres Operated



Date Range / Period	11	12	13	1	2	3	4	5	6	7	8	9	10
03/01/09 to 08/01/10	94.84	90.94	97.02	97.34	97.29	95.37	97.24	97.64	96.83	96.21	92.09	87.78	97.14
05/01/08 to 02/01/09	97.49	96.05	95.47	96.49	97.16	97.25	95.41	96.98	96.99	95.60	95.18	89.24	95.20
Min Standard	98.00	98.00	98.00	98.00	98.00	98.00	98.00	98.00	98.00	98.00	98.00	98.00	98.00

Kilometre figures are based on 4 weeks data