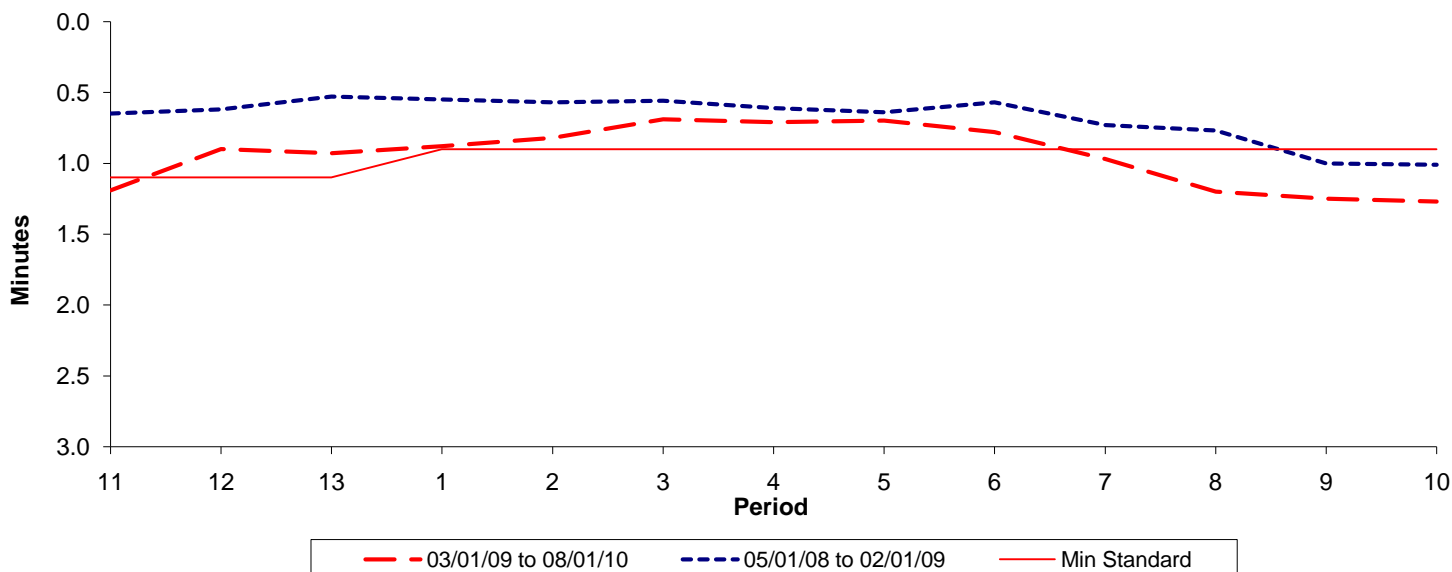




Reliability Performance (High Frequency)

Excess Waiting Time (minutes)

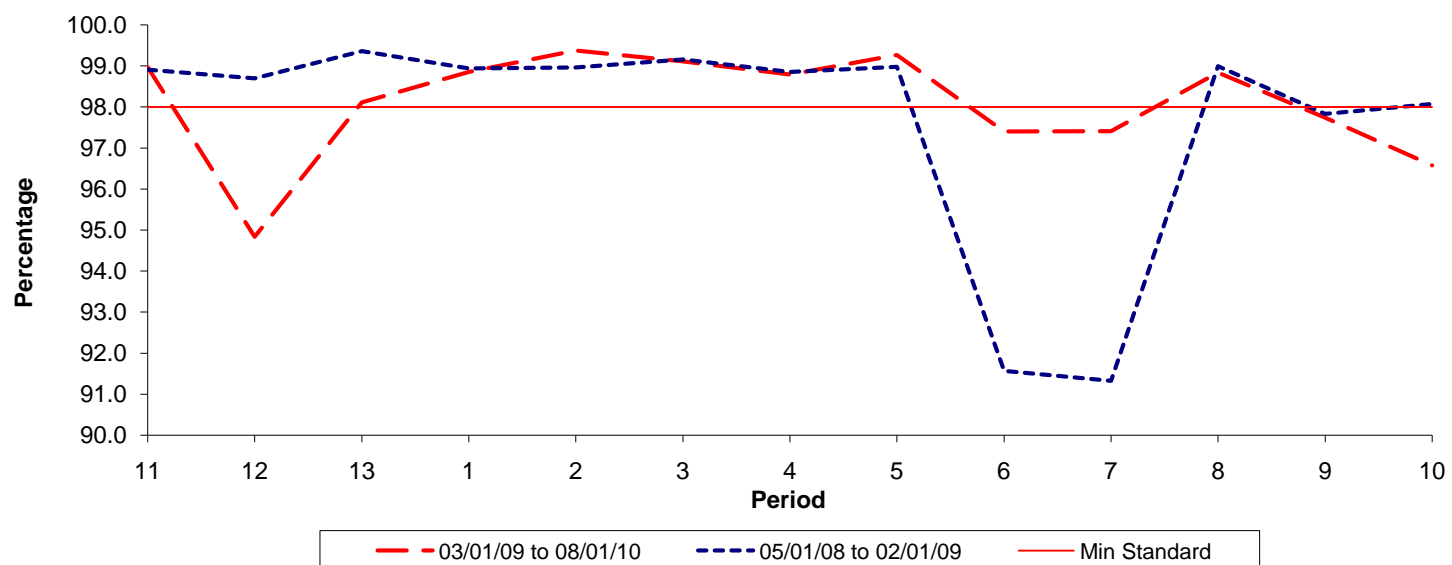


Date Range / Period	11	12	13	1	2	3	4	5	6	7	8	9	10
03/01/09 to 08/01/10	1.19	0.90	0.93	0.88	0.82	0.69	0.71	0.70	0.78	0.97	1.20	1.25	1.27
05/01/08 to 02/01/09	0.65	0.62	0.53	0.55	0.57	0.56	0.61	0.64	0.57	0.73	0.77	1.00	1.01
Min Standard	1.10	1.10	1.10	0.90	0.90	0.90	0.90	0.90	0.90	0.90	0.90	0.90	0.90

Excess Waiting Time figures are based on 12 weeks data

Kilometre Performance

% Kilometres Operated



Date Range / Period	11	12	13	1	2	3	4	5	6	7	8	9	10
03/01/09 to 08/01/10	98.97	94.84	98.11	98.85	99.37	99.11	98.79	99.26	97.40	97.41	98.83	97.74	96.57
05/01/08 to 02/01/09	98.91	98.70	99.36	98.94	98.96	99.16	98.85	98.98	91.56	91.32	98.99	97.83	98.07
Min Standard	98.00	98.00	98.00	98.00	98.00	98.00	98.00	98.00	98.00	98.00	98.00	98.00	98.00

Kilometre figures are based on 4 weeks data