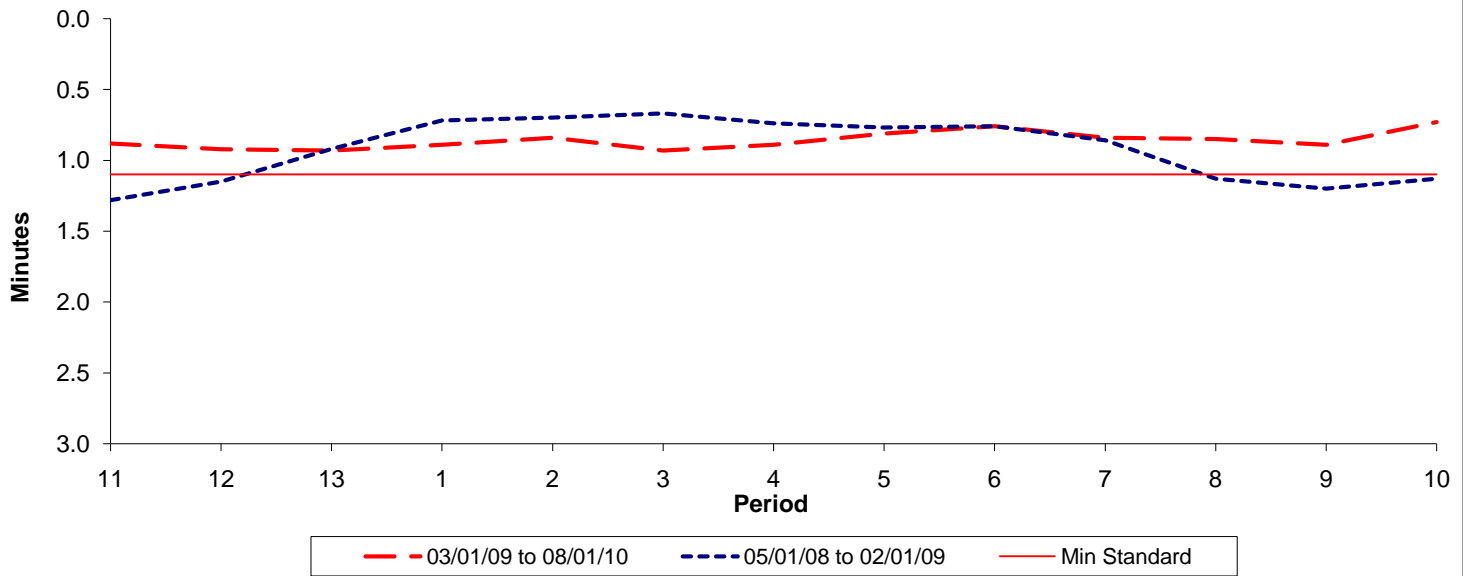




Reliability Performance (High Frequency)

Excess Waiting Time (minutes)

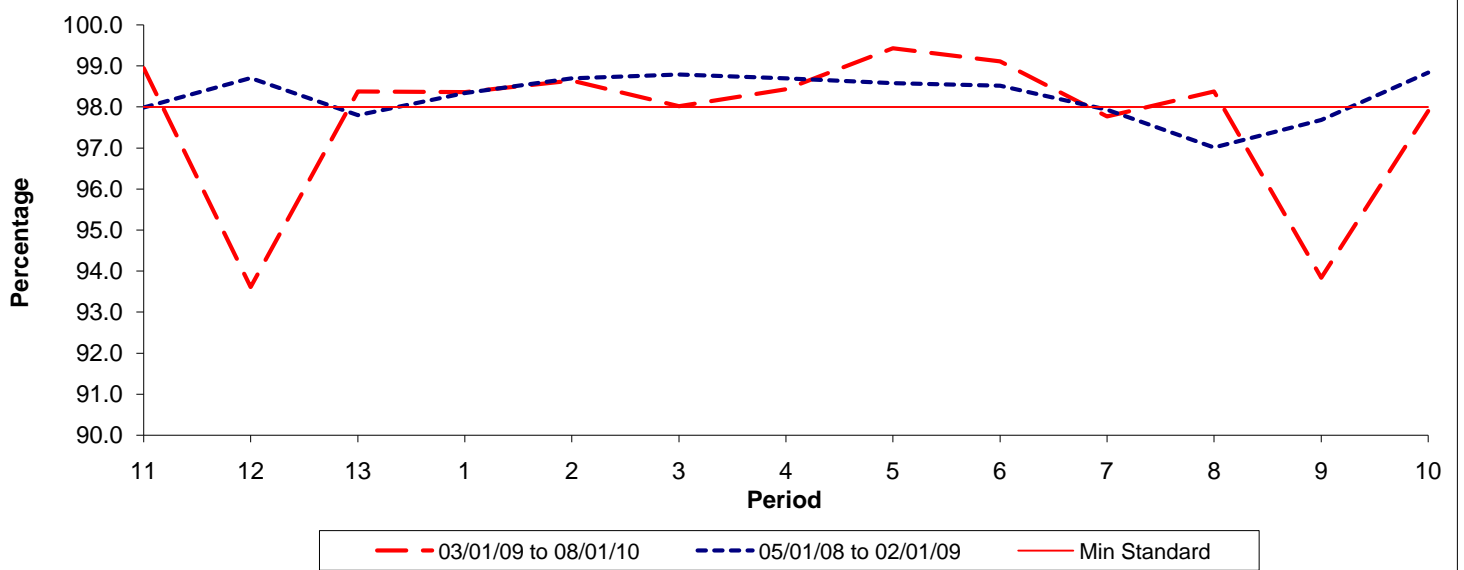


Date Range / Period	11	12	13	1	2	3	4	5	6	7	8	9	10
03/01/09 to 08/01/10	0.88	0.92	0.93	0.89	0.84	0.93	0.89	0.81	0.76	0.84	0.85	0.89	0.73
05/01/08 to 02/01/09	1.28	1.15	0.92	0.72	0.70	0.67	0.74	0.77	0.76	0.86	1.13	1.20	1.13
Min Standard	1.10	1.10	1.10	1.10	1.10	1.10	1.10	1.10	1.10	1.10	1.10	1.10	1.10

Excess Waiting Time figures are based on 12 weeks data

Kilometre Performance

% Kilometres Operated



Date Range / Period	11	12	13	1	2	3	4	5	6	7	8	9	10
03/01/09 to 08/01/10	98.95	93.61	98.38	98.36	98.64	98.02	98.43	99.43	99.11	97.77	98.38	93.84	97.90
05/01/08 to 02/01/09	97.99	98.71	97.80	98.34	98.70	98.79	98.70	98.58	98.52	97.93	97.01	97.68	98.84
Min Standard	98.00	98.00	98.00	98.00	98.00	98.00	98.00	98.00	98.00	98.00	98.00	98.00	98.00

Kilometre figures are based on 4 weeks data