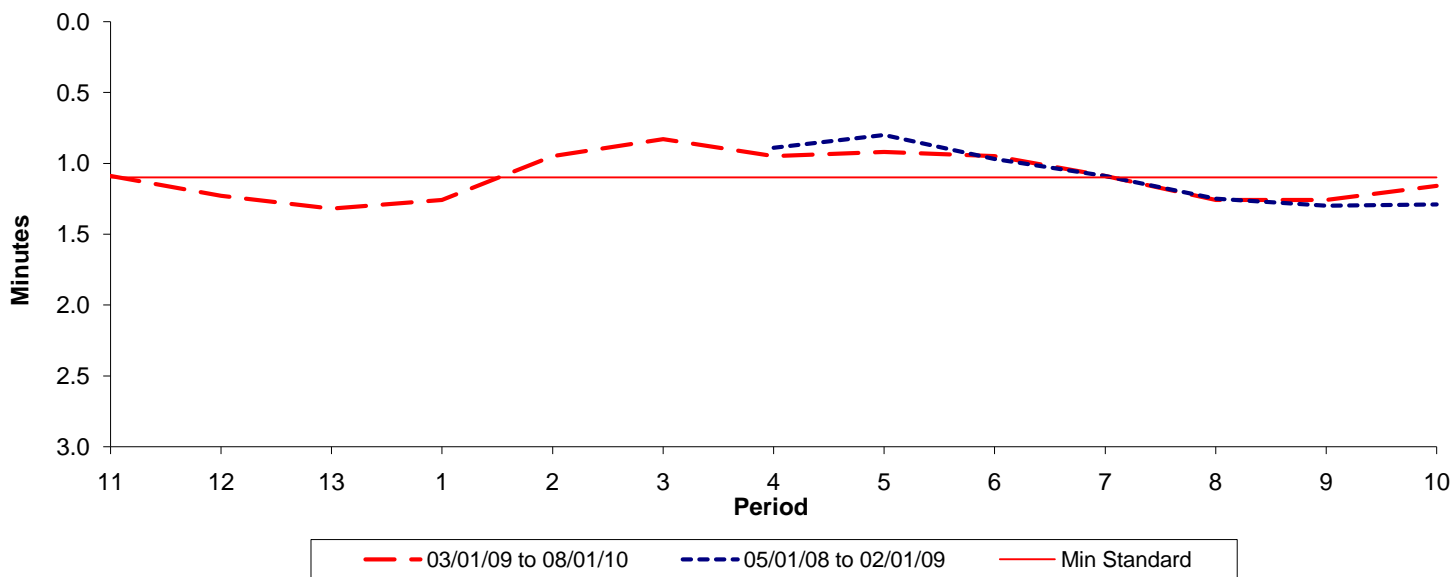




Reliability Performance (High Frequency)

Excess Waiting Time (minutes)

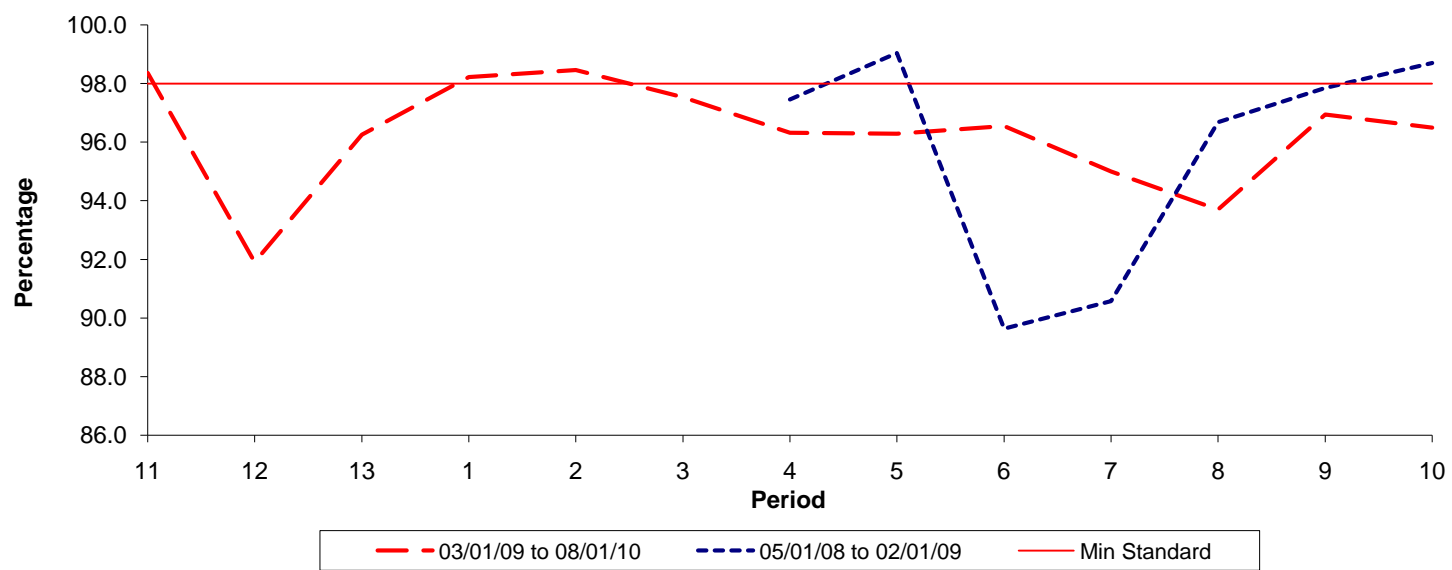


Date Range / Period	11	12	13	1	2	3	4	5	6	7	8	9	10
03/01/09 to 08/01/10	1.09	1.23	1.32	1.26	0.95	0.83	0.95	0.92	0.95	1.09	1.26	1.26	1.16
05/01/08 to 02/01/09							0.89	0.80	0.97	1.09	1.25	1.30	1.29
Min Standard	1.10	1.10	1.10	1.10	1.10	1.10	1.10	1.10	1.10	1.10	1.10	1.10	1.10

Excess Waiting Time figures are based on 12 weeks data

Kilometre Performance

% Kilometres Operated



Date Range / Period	11	12	13	1	2	3	4	5	6	7	8	9	10
03/01/09 to 08/01/10	98.36	91.91	96.25	98.22	98.46	97.53	96.32	96.29	96.55	95.00	93.70	96.94	96.50
05/01/08 to 02/01/09							97.46	99.04	89.63	90.57	96.68	97.85	98.70
Min Standard	98.00	98.00	98.00	98.00	98.00	98.00	98.00	98.00	98.00	98.00	98.00	98.00	98.00

Kilometre figures are based on 4 weeks data