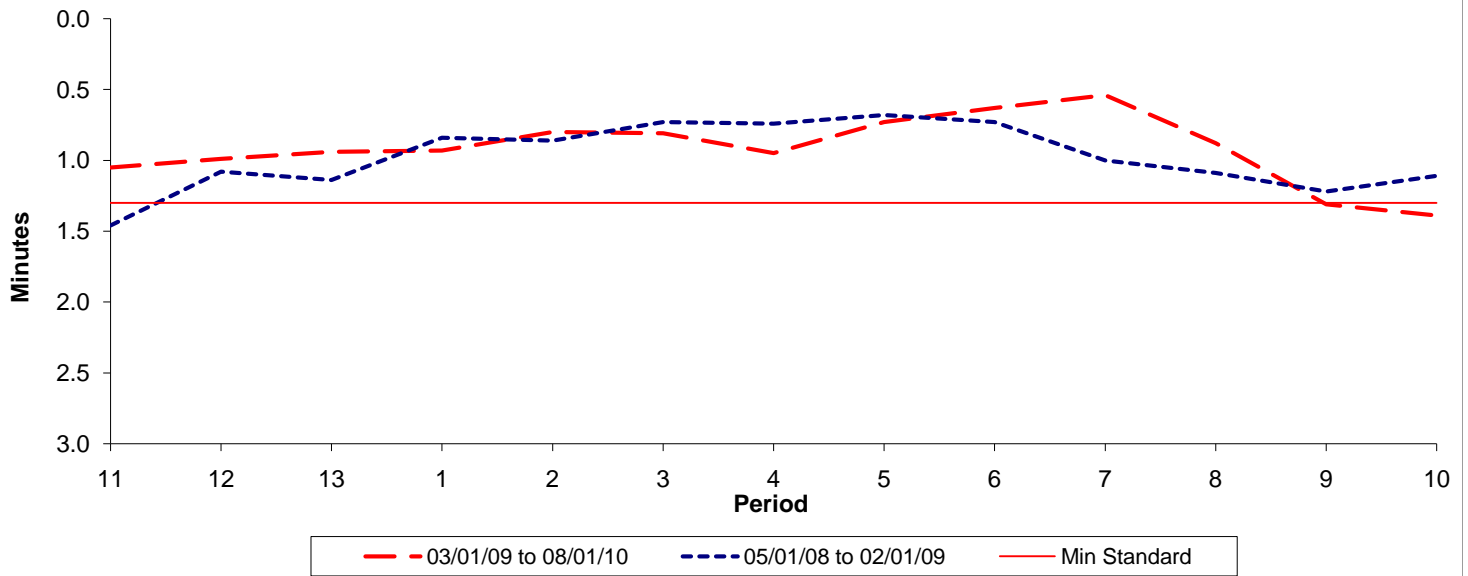




Reliability Performance (High Frequency)

Excess Waiting Time (minutes)

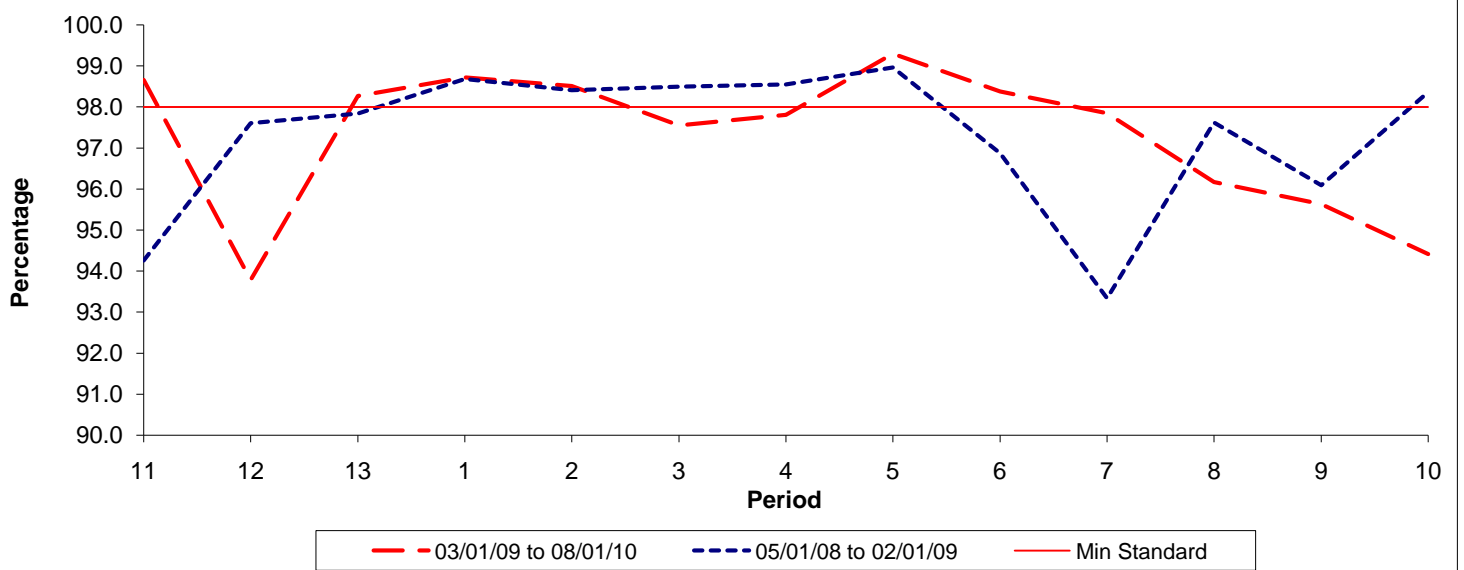


Date Range / Period	11	12	13	1	2	3	4	5	6	7	8	9	10
03/01/09 to 08/01/10	1.05	0.99	0.94	0.93	0.80	0.81	0.95	0.73	0.63	0.54	0.88	1.31	1.39
05/01/08 to 02/01/09	1.46	1.08	1.14	0.84	0.86	0.73	0.74	0.68	0.73	1.00	1.09	1.22	1.11
Min Standard	1.30	1.30	1.30	1.30	1.30	1.30	1.30	1.30	1.30	1.30	1.30	1.30	1.30

Excess Waiting Time figures are based on 12 weeks data

Kilometre Performance

% Kilometres Operated



Date Range / Period	11	12	13	1	2	3	4	5	6	7	8	9	10
03/01/09 to 08/01/10	98.66	93.78	98.27	98.72	98.51	97.55	97.81	99.30	98.38	97.85	96.17	95.63	94.41
05/01/08 to 02/01/09	94.26	97.60	97.84	98.68	98.41	98.49	98.55	98.96	96.87	93.34	97.62	96.09	98.36
Min Standard	98.00	98.00	98.00	98.00	98.00	98.00	98.00	98.00	98.00	98.00	98.00	98.00	98.00

Kilometre figures are based on 4 weeks data