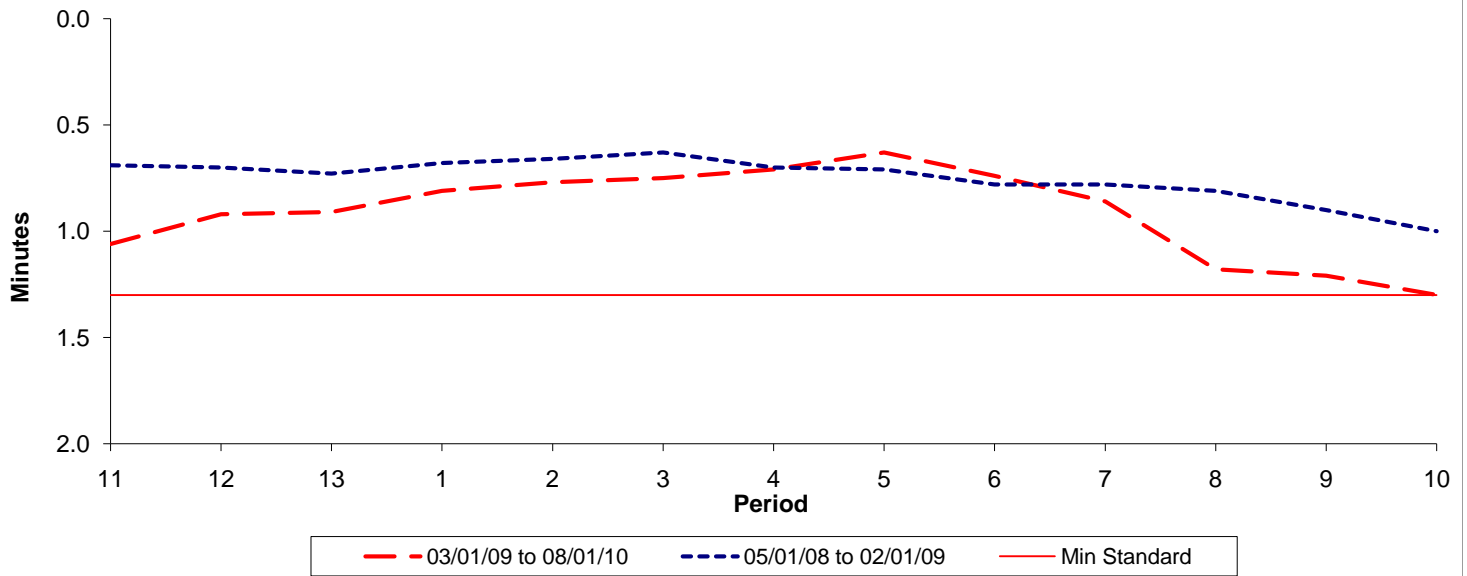




Reliability Performance (High Frequency)

Excess Waiting Time (minutes)

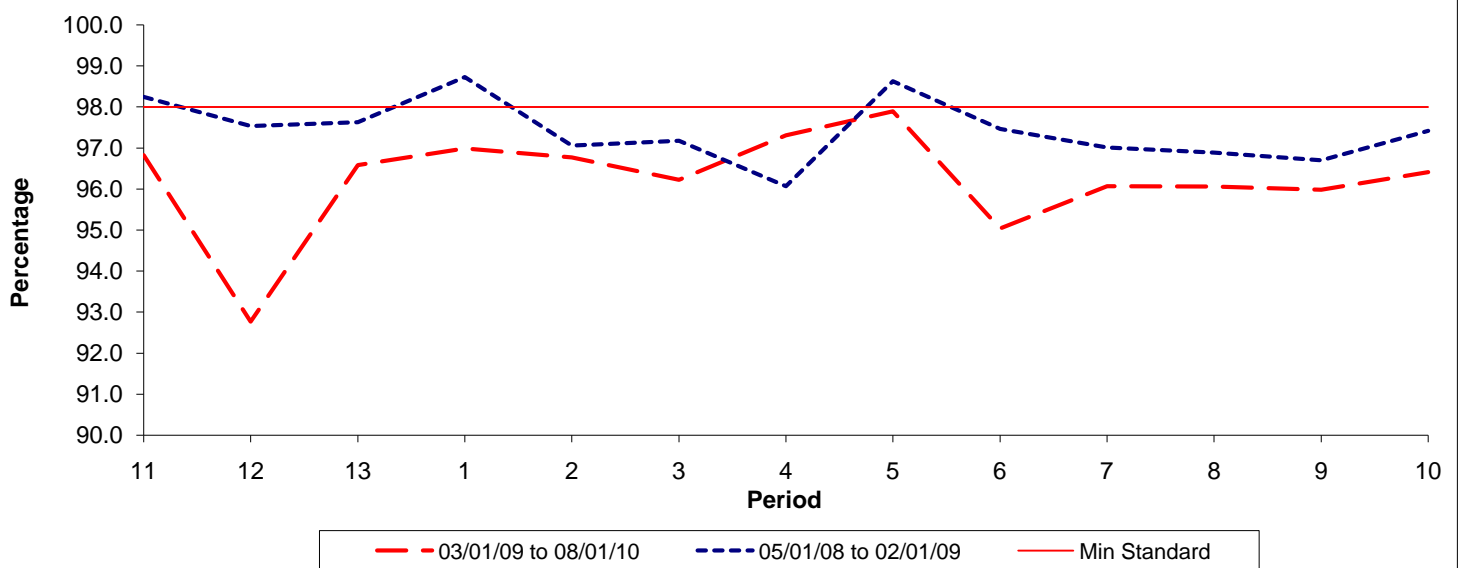


Date Range / Period	11	12	13	1	2	3	4	5	6	7	8	9	10
03/01/09 to 08/01/10	1.06	0.92	0.91	0.81	0.77	0.75	0.71	0.63	0.74	0.86	1.18	1.21	1.30
05/01/08 to 02/01/09	0.69	0.70	0.73	0.68	0.66	0.63	0.70	0.71	0.78	0.78	0.81	0.90	1.00
Min Standard	1.30	1.30	1.30	1.30	1.30	1.30	1.30	1.30	1.30	1.30	1.30	1.30	1.30

Excess Waiting Time figures are based on 12 weeks data

Kilometre Performance

% Kilometres Operated



Date Range / Period	11	12	13	1	2	3	4	5	6	7	8	9	10
03/01/09 to 08/01/10	96.82	92.77	96.58	96.99	96.76	96.22	97.31	97.89	95.03	96.06	96.06	95.98	96.41
05/01/08 to 02/01/09	98.25	97.54	97.63	98.73	97.06	97.18	96.07	98.63	97.47	97.01	96.89	96.70	97.42
Min Standard	98.00	98.00	98.00	98.00	98.00	98.00	98.00	98.00	98.00	98.00	98.00	98.00	98.00

Kilometre figures are based on 4 weeks data