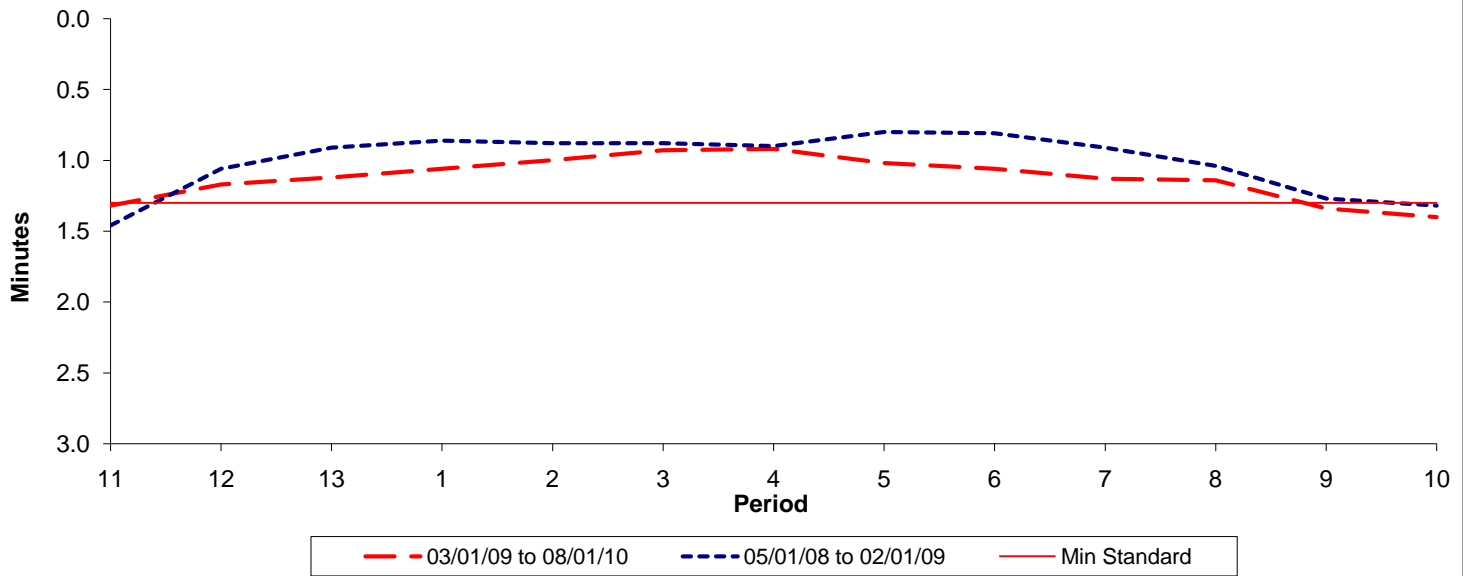




**Reliability Performance ( High Frequency )**

**Excess Waiting Time (minutes)**

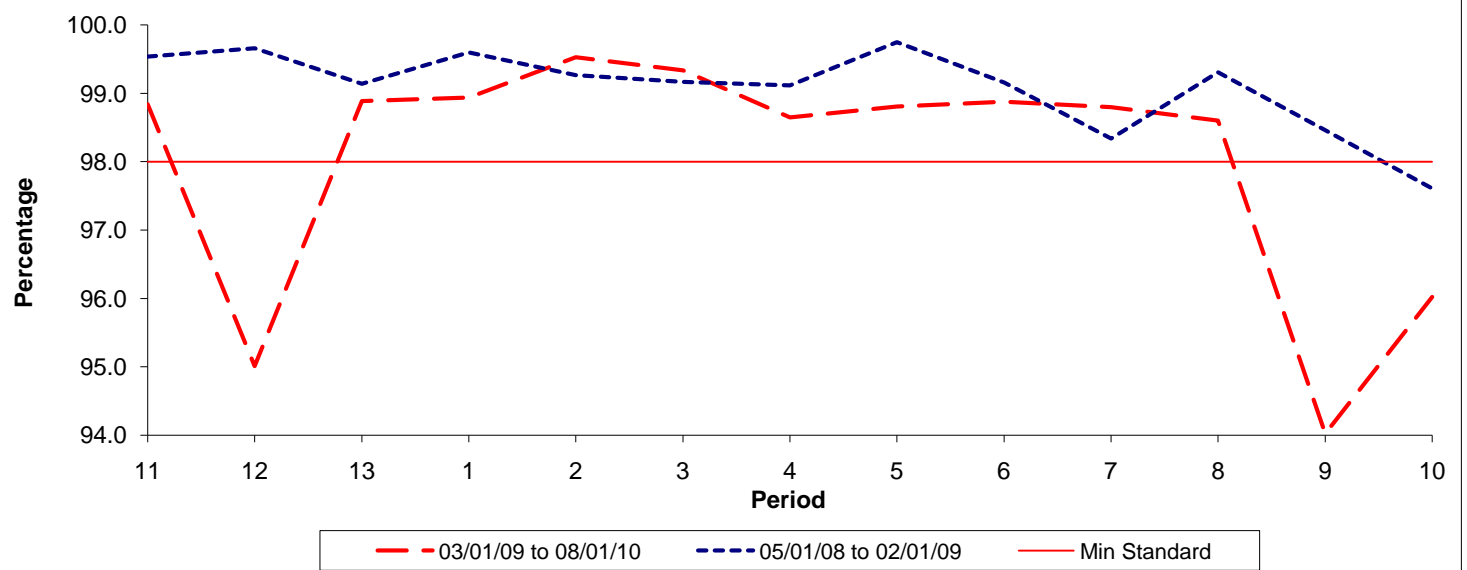


Date Range / Period	11	12	13	1	2	3	4	5	6	7	8	9	10
03/01/09 to 08/01/10	1.32	1.17	1.12	1.06	1.00	0.93	0.92	1.02	1.06	1.13	1.14	1.34	1.40
05/01/08 to 02/01/09	1.46	1.06	0.91	0.86	0.88	0.88	0.90	0.80	0.81	0.91	1.04	1.27	1.32
Min Standard	1.30	1.30	1.30	1.30	1.30	1.30	1.30	1.30	1.30	1.30	1.30	1.30	1.30

Excess Waiting Time figures are based on 12 weeks data

**Kilometre Performance**

**% Kilometres Operated**



Date Range / Period	11	12	13	1	2	3	4	5	6	7	8	9	10
03/01/09 to 08/01/10	98.84	95.01	98.89	98.94	99.53	99.34	98.65	98.81	98.88	98.80	98.60	94.02	96.02
05/01/08 to 02/01/09	99.54	99.66	99.14	99.60	99.27	99.17	99.12	99.75	99.16	98.34	99.31	98.46	97.61
Min Standard	98.00	98.00	98.00	98.00	98.00	98.00	98.00	98.00	98.00	98.00	98.00	98.00	98.00

Kilometre figures are based on 4 weeks data