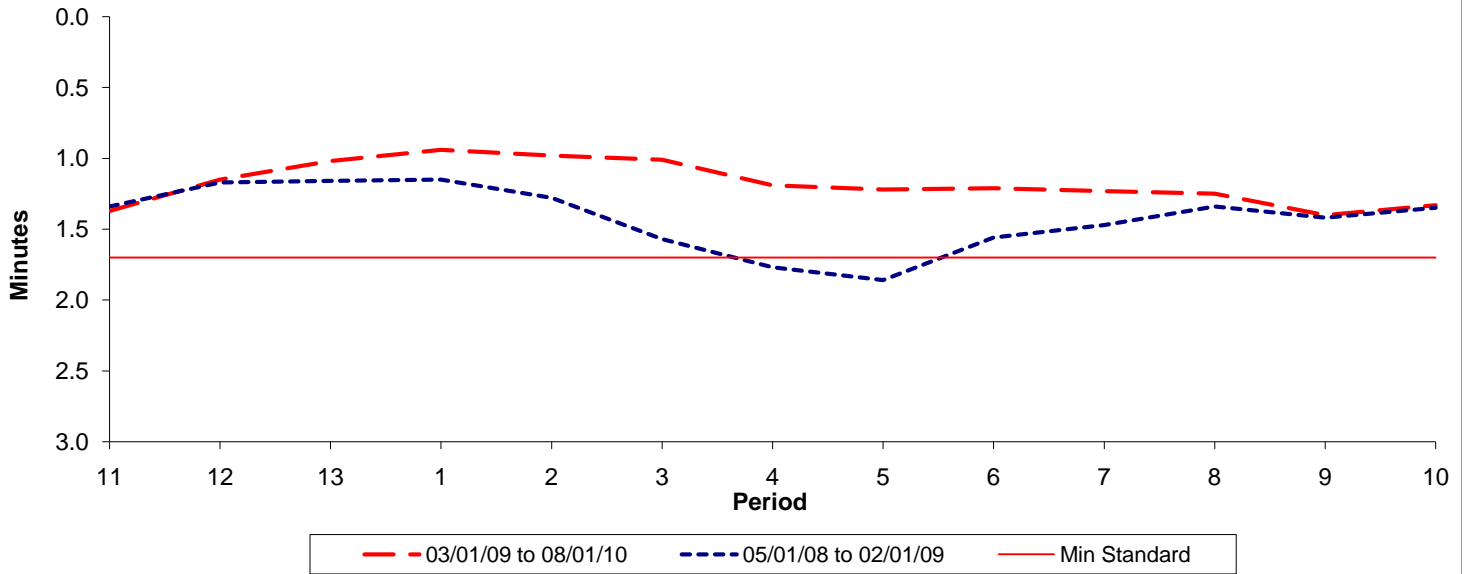




Reliability Performance (High Frequency)

Excess Waiting Time (minutes)

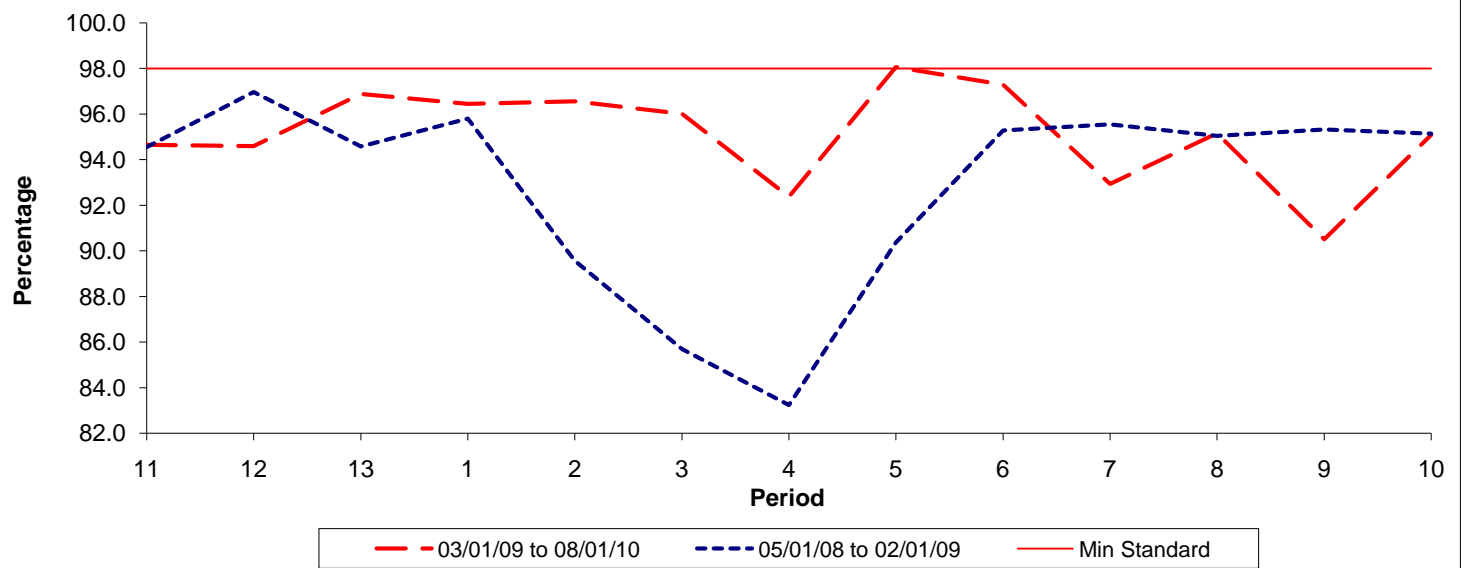


Date Range / Period	11	12	13	1	2	3	4	5	6	7	8	9	10
03/01/09 to 08/01/10	1.37	1.15	1.02	0.94	0.98	1.01	1.19	1.22	1.21	1.23	1.25	1.40	1.33
05/01/08 to 02/01/09	1.34	1.17	1.16	1.15	1.28	1.57	1.77	1.86	1.56	1.47	1.34	1.42	1.35
Min Standard	1.70	1.70	1.70	1.70	1.70	1.70	1.70	1.70	1.70	1.70	1.70	1.70	1.70

Excess Waiting Time figures are based on 12 weeks data

Kilometre Performance

% Kilometres Operated



Date Range / Period	11	12	13	1	2	3	4	5	6	7	8	9	10
03/01/09 to 08/01/10	94.65	94.60	96.89	96.45	96.57	96.02	92.38	98.07	97.30	92.94	95.16	90.51	95.09
05/01/08 to 02/01/09	94.56	96.97	94.58	95.81	89.56	85.69	83.23	90.37	95.28	95.55	95.04	95.32	95.15
Min Standard	98.00	98.00	98.00	98.00	98.00	98.00	98.00	98.00	98.00	98.00	98.00	98.00	98.00

Kilometre figures are based on 4 weeks data